

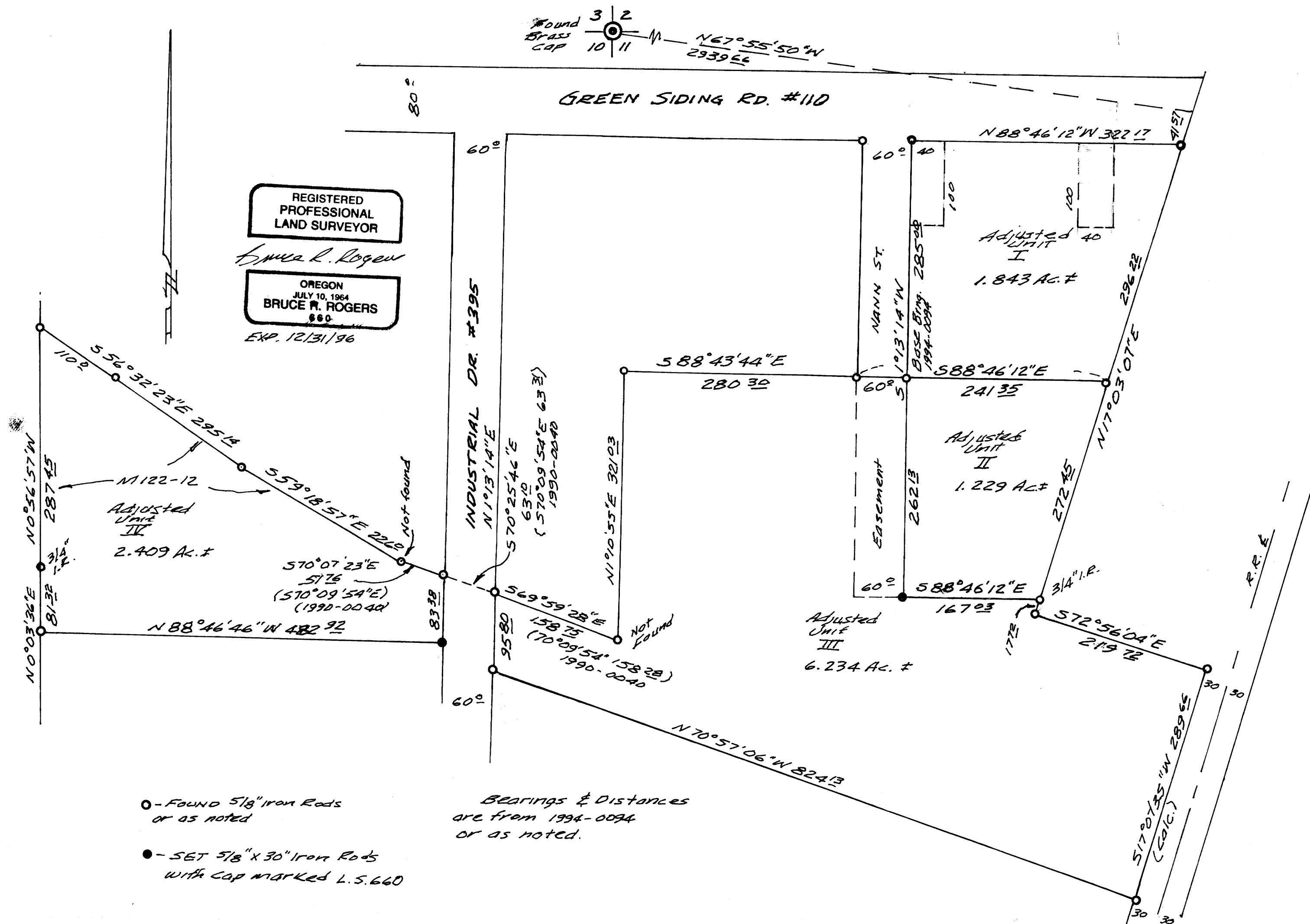
BOUNDARY LINE ADJUSTMENT SURVEY
 IN THE NORTH 1/2 OF SEC. 11, T.28S., R.6W. W.M.
 FOR UMPQUA DEVELOPMENT CORP.
 by Bruce Rogers 1727 S.E. Mill, Roseburg, OR.

COUNTY SURVEYORS FILE DATA
 DO NOT REMOVE FROM OFFICE

FILED
 Date: 4/10/96 By: PC
 This survey consists of:
 Map: M123-48
 Narrative:
 Corner Rpt:
 DOUGLAS COUNTY SURVEYOR

MAR., 1996 1" = 100'
 Planners File # 96-042

APPROVED
 Keith L. Cubic 4/10/96
 Planning Dir.



MAP FILE M123-48

MAP FILE M123-48