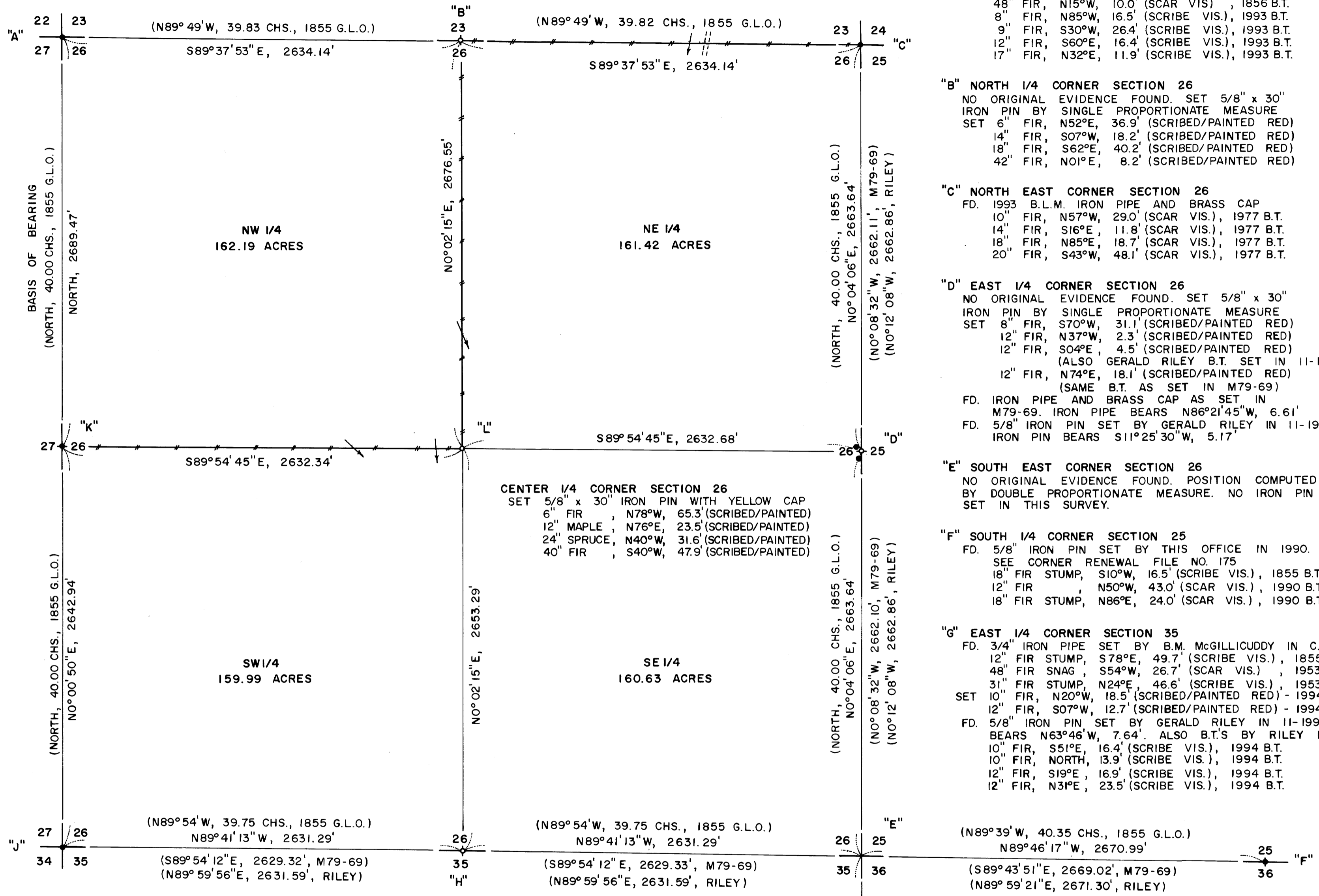


COUNTY SURVEYORS FILE DATA
 DO NOT REMOVE FROM OFFICE

SURVEY FOR
 GIUSTINA RESOURCES INC.
 388 PEARL STREET
 EUGENE, OREGON 97401
 BY
 ROBERTS SURVEYING INC.
 29 WEST 29TH STREET
 EUGENE, OREGON 97405
 IN
 SECTION 26, T21S, R5W, W.M.
 DOUGLAS COUNTY, OREGON

MAP FILE M123-29



"A" NORTH WEST CORNER SECTION 26
 FD. 1993 B.L.M. IRON PIPE AND BRASS CAP
 48" FIR, N15°W, 10.0' (SCAR VIS.), 1856 B.T.
 8" FIR, N85°W, 16.5' (SCRIBE VIS.), 1993 B.T.
 9" FIR, S30°W, 26.4' (SCRIBE VIS.), 1993 B.T.
 12" FIR, S60°E, 16.4' (SCRIBE VIS.), 1993 B.T.
 17" FIR, N32°E, 11.9' (SCRIBE VIS.), 1993 B.T.

"B" NORTH 1/4 CORNER SECTION 26
 NO ORIGINAL EVIDENCE FOUND. SET 5/8" x 30"
 IRON PIN BY SINGLE PROPORTIONATE MEASURE
 SET 6" FIR, N52°E, 36.9' (SCRIBED/PAINTED RED)
 14" FIR, S07°W, 18.2' (SCRIBED/PAINTED RED)
 18" FIR, S62°E, 40.2' (SCRIBED/PAINTED RED)
 42" FIR, N01°E, 8.2' (SCRIBED/PAINTED RED)

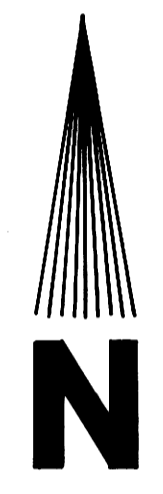
"C" NORTH EAST CORNER SECTION 26
 FD. 1993 B.L.M. IRON PIPE AND BRASS CAP
 10" FIR, N57°W, 29.0' (SCAR VIS.), 1977 B.T.
 14" FIR, S16°E, 11.8' (SCAR VIS.), 1977 B.T.
 18" FIR, N85°E, 18.7' (SCAR VIS.), 1977 B.T.
 20" FIR, S43°W, 48.1' (SCAR VIS.), 1977 B.T.

"D" EAST 1/4 CORNER SECTION 26
 NO ORIGINAL EVIDENCE FOUND. SET 5/8" x 30"
 IRON PIN BY SINGLE PROPORTIONATE MEASURE
 SET 8" FIR, S70°W, 31.1' (SCRIBED/PAINTED RED)
 12" FIR, N37°W, 2.3' (SCRIBED/PAINTED RED)
 12" FIR, S04°E, 4.5' (SCRIBED/PAINTED RED)
 (ALSO GERALD RILEY B.T. SET IN 11-1994
 12" FIR, N74°E, 18.1' (SCRIBED/PAINTED RED)
 (SAME B.T. AS SET IN M79-69)
 FD. IRON PIPE AND BRASS CAP AS SET IN
 M79-69. IRON PIPE BEARS N86°21'45"W, 6.61'
 FD. 5/8" IRON PIN SET BY GERALD RILEY IN 11-1994
 IRON PIN BEARS S11°25'30"W, 5.17'

"E" SOUTH EAST CORNER SECTION 26
 NO ORIGINAL EVIDENCE FOUND. POSITION COMPUTED
 BY DOUBLE PROPORTIONATE MEASURE. NO IRON PIN
 SET IN THIS SURVEY.

"F" SOUTH 1/4 CORNER SECTION 25
 FD. 5/8" IRON PIN SET BY THIS OFFICE IN 1990.
 SEE CORNER RENEWAL FILE NO. 175
 18" FIR STUMP, S10°W, 16.5' (SCRIBE VIS.), 1855 B.T.
 12" FIR, N50°W, 43.0' (SCAR VIS.), 1990 B.T.
 18" FIR STUMP, N86°E, 24.0' (SCAR VIS.), 1990 B.T.

"G" EAST 1/4 CORNER SECTION 35
 FD. 3/4" IRON PIPE SET BY B.M. MCGILLICUDDY IN C.S. 41/182
 12" FIR STUMP, S78°E, 49.7' (SCRIBE VIS.), 1855 B.T.
 48" FIR SNAG, S54°W, 26.7' (SCAR VIS.), 1953 B.T.
 31" FIR STUMP, N24°E, 46.6' (SCRIBE VIS.), 1953 B.T.
 SET 10" FIR, N20°W, 18.5' (SCRIBED/PAINTED RED) - 1994 RILEY B.T.
 12" FIR, S07°W, 12.7' (SCRIBED/PAINTED RED) - 1994 RILEY B.T.
 FD. 5/8" IRON PIN SET BY GERALD RILEY IN 11-1994. PIN
 BEARS N63°46'W, 7.64'. ALSO B.T.'S BY RILEY IN 11-1994.
 10" FIR, S51°E, 16.4' (SCRIBE VIS.), 1994 B.T.
 10" FIR, NORTH, 13.9' (SCRIBE VIS.), 1994 B.T.
 12" FIR, S19°E, 16.9' (SCRIBE VIS.), 1994 B.T.
 12" FIR, N31°E, 23.5' (SCRIBE VIS.), 1994 B.T.



SCALE 1" = 500'
 JANUARY 30, 1996

REGISTERED
 PROFESSIONAL
 LAND SURVEYOR

L.D. Roberts

OREGON
 L.D. ROBERTS
 1039

EXPIRES 12-31-96

"K" WEST 1/4 CORNER SECTION 26
 FD. 1993 B.L.M. IRON PIPE AND BRASS CAP
 24" FIR, N10°E, 13.8' (SCAR VIS.) SEE REN. 51
 18" FIR, N45°W, 18.7' (SCAR VIS.) 1964 B.T.

"J" SOUTH WEST CORNER SECTION 26
 FD. 3/4" IRON ROD. SEE CORNER RENEWAL 106
 20" FIR, N81°E, 4.5' (SCAR VIS.), 1964 B.T.
 24" CEDAR, S51°W, 23.5' (SCAR VIS.), 1964 B.T.

"H" SOUTH 1/4 CORNER SECTION 26
 NO ORIGINAL EVIDENCE FOUND. SET 5/8" x 30"
 IRON PIN BY SINGLE PROPORTIONATE MEASURE
 SET 8" MAPLE, N36°E, 49.1' (SCRIBED/PAINTED RED)
 8" FIR, S45°E, 11.9' (SCRIBED/PAINTED RED)
 8" FIR, S64°W, 22.7' (SCRIBED/PAINTED RED)
 10" FIR, N08°W, 35.0' (SCRIBED/PAINTED RED)

LEGEND,
 • MONUMENTS FOUND AND USED FOR CONTROL
 ○ MONUMENTS SET, 5/8" x 30" IRON PINS WITH
 YELLOW PLASTIC CAPS. CAPS STAMPED
 "ROBERTS P.L.S. 1039"
 () DATA OF RECORD, 1855 G.L.O. SURVEY, COUNTY
 SURVEY 41/182, COUNTY SURVEY M79-69 AND
 UNRECORDED SURVEY BY GERALD RILEY DATED
 NOVEMBER 1994.
 ———— LINES BLAZED, PAINTED AND POSTED WITH GREEN
 METAL FENCE POSTS
 ———— BASIS OF BEARING, NORTH 1/2 OF WEST LINE
 SECTION 26 FROM 1855 G.L.O. SURVEY
 ———— DISTANCES TO B.T.'S ARE CENTER MEASURE
 ALL NEW B.T.'S ARE SCRIBED AND HAVE A METAL
 WASHER STAMPED P.L.S. 1039 NAILED TO LOWER
 BLAZE. SCRIBED BLAZES ARE PAINTED RED.

NARRATIVE, THE PURPOSE OF THIS SURVEY IS TO BLAZE AND POST THE FOLLOWING LINES. 1) THE EAST 1/2 OF THE NORTH LINE OF SECTION 26. 2) THE NORTH 1/2 OF THE NORTH-SOUTH CL OF SECTION 26. 3) THE WEST 1/2 OF THE EAST-WEST CL OF SECTION 26. ALSO THE FOLLOWING CORNERS WERE SET IN THIS SURVEY. 1) THE EAST 1/4 CORNER 2) THE NORTH 1/4 CORNER 3) THE CENTER 1/4 CORNER AND 4) THE SOUTH 1/4 CORNER. THE S.W. SECTION CORNER, THE WEST 1/4 CORNER, THE N.W. SECTION CORNER, THE N.E. SECTION CORNER, THE SOUTH 1/4 CORNER OF SECTION 25 AND THE EAST 1/4 CORNER OF SECTION 35 WERE FOUND IN THE FIELD AND USED AS CONTROL FOR THIS SURVEY. A SERIES OF E.D.M. CONTROL TRAVERSES, USING A WILD T-16 THEODOLITE AND A DI-4L E.D.M., WAS RUN BETWEEN SAID CONTROLLING CORNERS FOUND IN THE FIELD. SECTION 26 WAS THEN SUBDIVIDED ACCORDING TO THE B.L.M. MANUAL OF INSTRUCTION FOR THE SURVEY OF THE PUBLIC LANDS OF THE UNITED STATES. THE POSITION FOR THE S.E. CORNER OF SECTION 26, CORNER "E", WAS COMPUTED BY DOUBLE PROPORTIONATE MEASURE. THE NORTH 1/4 CORNER, MONUMENT "B", WAS SET BY SINGLE PROPORTIONATE MEASURE BETWEEN FOUND MONUMENTS "A" AND "C". THE EAST 1/4 CORNER, MONUMENT "D", WAS SET BY SINGLE PROPORTIONATE MEASURE BETWEEN FOUND MONUMENT "C" AND COMPUTED POSITION "E". THE SOUTH 1/4 CORNER, MONUMENT "H", WAS SET BY SINGLE PROPORTIONATE MEASURE BETWEEN FOUND MONUMENT "J" AND COMPUTED POSITION "E". THE CENTER 1/4 CORNER, MONUMENT "L" WAS SET AT THE POINT OF INTERSECTION OF THE NORTH-SOUTH AND EAST-WEST CENTERLINES OF SECTION 26 AS SHOWN. A CLOSED RANDOM PROPERTY LINE TRAVERSE, USING A WILD T-16 THEODOLITE AND A DI-4L E.D.M., WAS RUN ALONG ALL PROPERTY LINES TO BE BLAZED AND POSTED. OFFSETS WERE COMPUTED FROM THIS PROPERTY LINE TRAVERSE TO THE TRUE PROPERTY LINE AND SAID OFFSETS WERE USED TO BLAZE AND POST THE TRUE LINE IN THE FIELD. PROPERTY LINES WERE MARKED WITH RED PAINTED BLAZES, RED RIBBON AND GREEN METAL FENCE POSTS.

MAP FILE M123-29