

BOUNDARY LINE SURVEY LOCATED IN SEC. 13
T.22 S., R.10 W., AND SEC. 18, T.22 S., R.9 W., W.M.,
DOUGLAS COUNTY, OREGON

FILED

Date: 2-2-96 By: JP
This survey consists of:
Map: M123-24
Narrative:
Corner Rpt:

DOUGLAS COUNTY
bc SURVEYOR cb

COUNTY SURVEYORS FILE DATA
DO NOT REMOVE FROM OFFICE

SURVEY FOR:

IP TIMBERLANDS OPERATING CO., LTD
711 PORT DOCK ROAD
REEDSPORT, OR. 97467

SURVEY BY:

CLYDE F. MULKINS
TIMBER CRUISING & ENGINEERING
P.O. BOX 750
COOS BAY, OR. 97420



EXPIRES 12-31-96

LEGEND

- ⊙ FD. CORNERS AS SHOWN
- SET 3/4" X 36" ALUM. ROD WITH A 3/4" ALUM. CAP (WITH MAG. INSERT)
- ▲ 6" ALUM POST ON LINE - LINES ARE FLAGGED AND BLAZED
- () CORNER REF. NO.
- <<< RIDGES
- ←←← CREEK / DRAW
- [] 1896 GLO DIST. & BEARING
- [] 1970 BLM DIST. & BEARING
- [] 1894 GLO DIST. & BEARING

CORNER NOTES

CORNER #1: FD. A DOUGLAS COUNTY BRASS CAP AT THE 1/4 CORNER OF SECTION 13, T.22 S., R.10 W., ONLY (BRASS CAP IS MARKED AS A COMMON 1/4 CORNER BETWEEN SECTIONS 13 AND 18) FROM WHICH: FD. A 37" DF WITH A HEALED FACE BEARS N60°W, 18.2 FT. (RECORD N61°W, 18.5 FT.); FD. A 16" DF WITH A HEALED FACE BEARS N30°E, 23.6 FT. (RECORD N29°E, 24.7 FT.); 1 SCRIBED "T22S RIOW 1/4 S13 BT" ON A 14" DF BEARS N6°W, 21.8 FT.; 1 SCRIBED "T22S RIOW S13 BT" ON AN 11" DF BEARS S48°W, 21.8 FT..

CORNER #2: FD. A 1970 BLM BRASS CAP AT THE NW CORNER OF DLC 37 FROM WHICH: FD. A 19" MAPLE (CLUMP) WITH A HEALED FACE BEARS S76°E, 26.4 FT.; FD. A 17" MAPLE WITH A HEALED FACE BEARS S19 1/4°E, 45.9 FT.

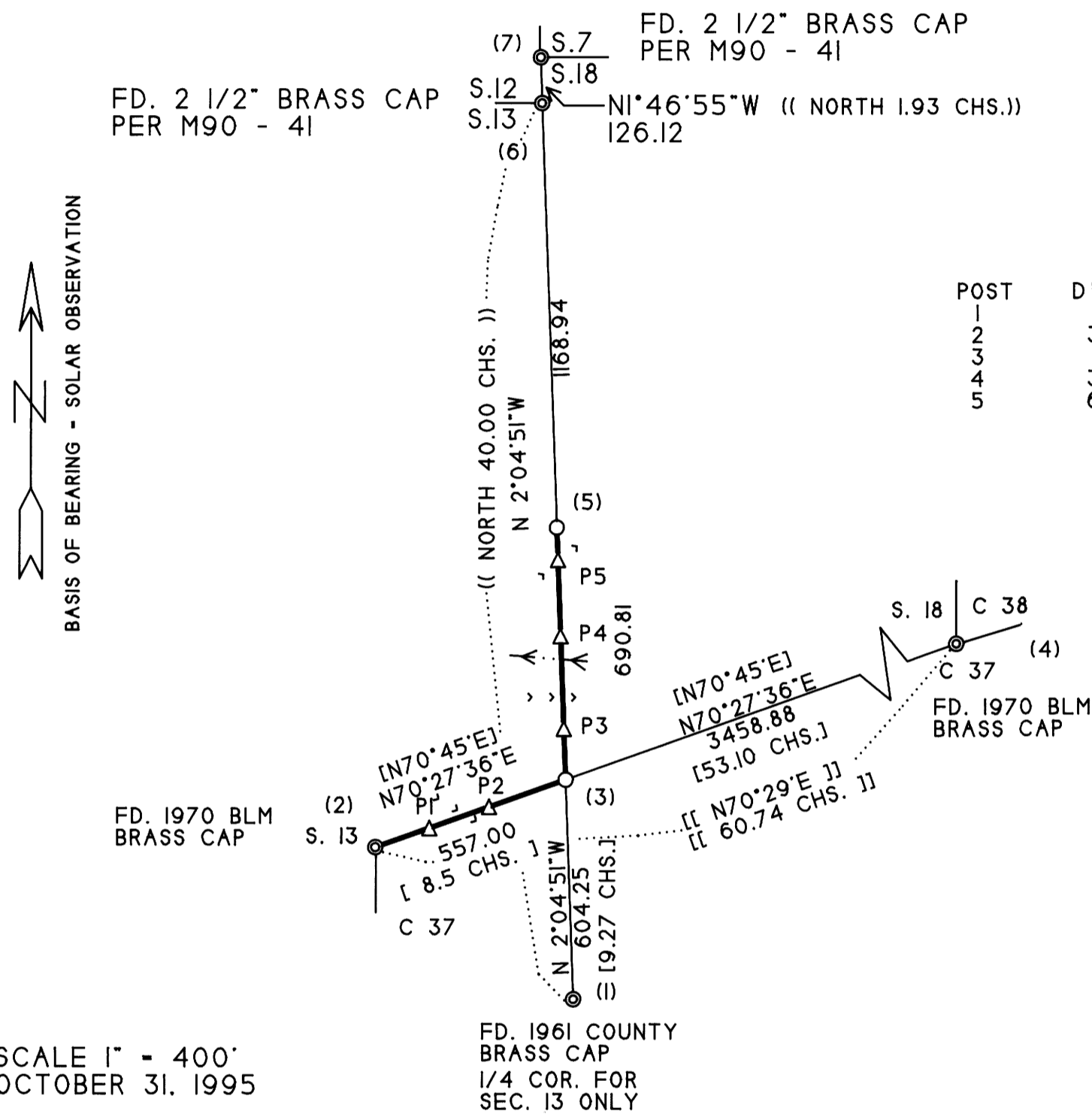
CORNER #3: SET A 3/4" X 36" ALUM. ROD AND 3 1/4" ALUM CAP AT THE CLOSING CORNER BETWEEN SECTIONS 13 T.22 S., R.10 W., AND SECTION 18 T.22 S., R.9 W., AND DLC 37 FROM WHICH: 1 SCRIBED "C37 BT" ON A 38" DF BEARS S54°W, 27.6 FT.; 1 SCRIBED "C37 BT" ON A 15" DF BEARS S9°E, 17.6 FT.

CORNER #4: FD. A 1970 BLM BRASS CAP AT THE SW CORNER OF DLC 38. THE CORNER HAD BEEN DISTURBED AND WAS RESET FROM RECORD BT'S. RECORD BT'S FOUND WERE : FD. A 10" ALDER STUMP WITH VISIBLE BARK SCRIBES BEARS N 5 1/2°E, 46 1/2 lks.; FD. A 10" ALDER STUMP WITH VISIBLE BARK SCRIBES BEARS N52 1/2°W, 20 lks.; 1 SET A 5" STEEL FENCE POST BEARS S59°W, 11.8 FT.; 1 SET A 5" STEEL FENCE POST BEARS N9°E, 9.2 FT.

CORNER #5: SET A 3/4" X 36" ALUM. ROD WITH A 3 1/4" ALUM. CAP ON LINE BETWEEN SECTIONS 13 AND 18 FROM WHICH: 1 SCRIBED "POL BT" ON A 26" DF BEARS N1°E, 28.2 FT.; 1 SCRIBED "POL BT" ON A 14" DF BEARS S47°E, 8.5 FT.

CORNER #6: FD. A 2 1/2" BRASS CAP AT THE CORNER OF SECTIONS 12 AND 13 ONLY PER M 90-41.

CORNER #7: FD. A 2 1/2" BRASS CAP AT THE CORNER OF SECTIONS 7 AND 18 ONLY PER M 90-41.



SCALE 1" = 400'
OCTOBER 31, 1995

POSTING NOTES

POST	DIST.	DIR.	TO	TREE	BEARS	REFERENCE DIST.
1	158	W	NW DLC 37	33" DF	S13°W	9.4
2	333	W	NW DLC 37	30" DF	N12°W	2.8
3	140	S	CC	23" DF	S02°W	3.0
4	394	S	CC	27" DF	S18°E	2.9
5	604	S	CC	17" DF	S01°E	8.4

NARRATIVE

THE PURPOSE OF THIS SURVEY WAS TO ESTABLISH THE PROPERTY LINES, AS SHOWN, FOR FUTURE FOREST OPERATIONS. RECORD SURVEYS USED FOR CONTROL FOR THIS SURVEY WERE: 1970 BLM DEPENDENT RESURVEY OF A PORTION OF SUBDIVISIONAL LINES, AND A PORTION OF THE DONATION LAND CLAIM LINES IN T.22 S., R.9 W., AND T.22 S., R.10 W.; M90-41; M12-2 AND C.S. 41/131; CORNER RENEWAL 68, T.22 S., R.9 W.

DAVE FRIEDLEIN, LAND USE COORDINATOR FOR IP TIMBERLANDS OPERATING CO., LTD., HAS ASKED THE BLM PORTLAND CADASTRAL SURVEY OFFICE TO REVIEW THEIR SURVEY RETRACING OF THE NORTH LINE OF DLC 37. THE BLM REVIEW ACCEPTS THEIR 1970 SURVEY AND THE BLM PLANS TO AMEND THEIR RECORD OF SURVEY TO SHOW TRUE ORIGIN OF FOUND AND ACCEPTED MONUMENTS FOR DLC 37.

CORNER #5 WAS SET ON THE SECTION LINE AT MIDPOINT FROM THE EAST 1/4 CORNER OF SECTION 13 AND THE CORNER OF SECTIONS 7 AND 18 ONLY.

THE FIELD WORK FOR THIS SURVEY WAS PERFORMED BETWEEN SEPTEMBER 14 AND OCTOBER 31, 1995. ASSISTING ME WITH THIS SURVEY WERE TROY RAMBO, RANDY MADDEN, JASON SMITH, AND FLOYD VANDERVELDEN, LS 1047. THIS SURVEY WAS BASED ON ONE CLOSED LOOP TRAVERSE.

MAP FILE M123-24

MAP FILE M123-24