

# BOUNDARY LINE ADJUSTMENT

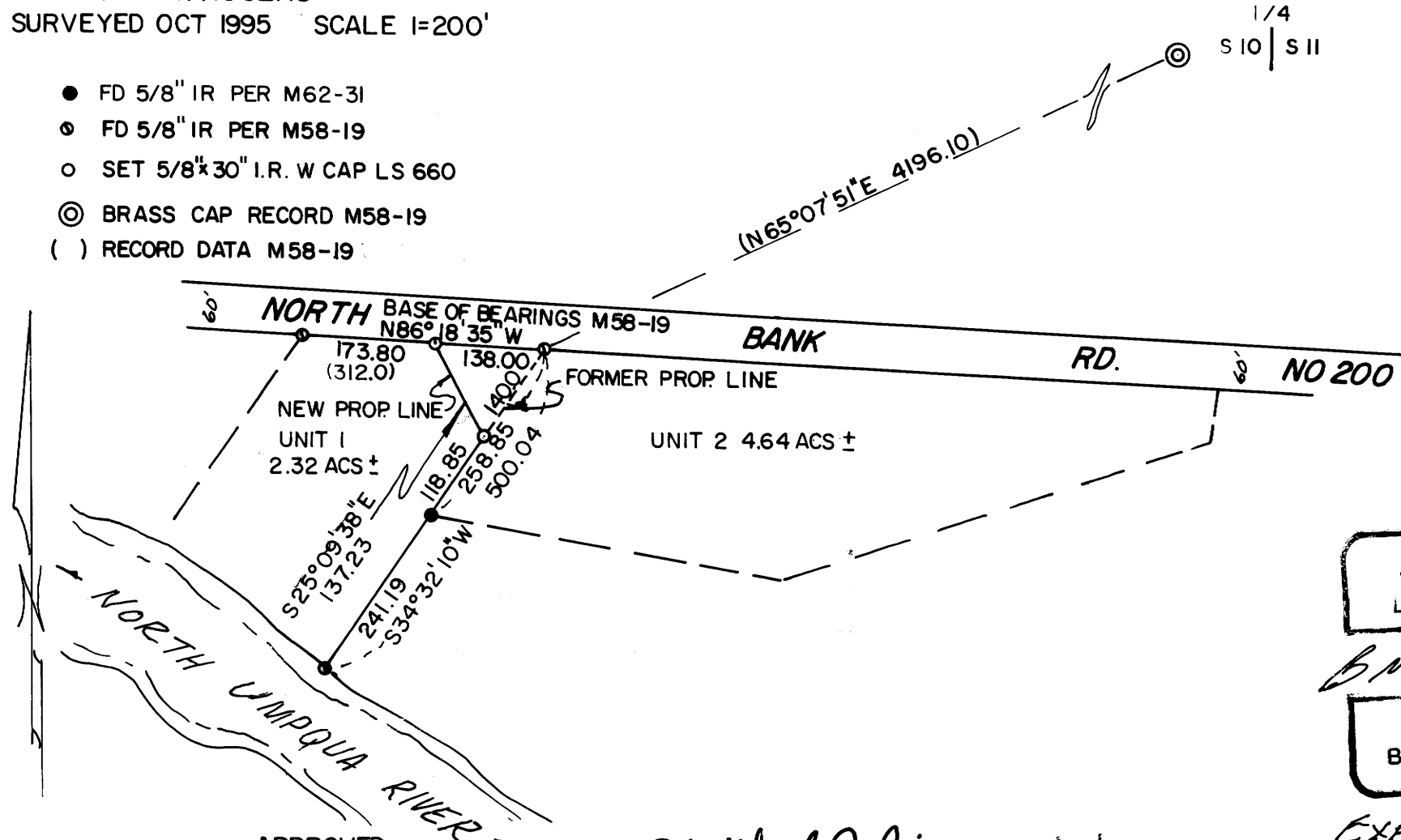
IN THE SW 1/4 OF SEC 10 & THE NW 1/4 OF SEC 15 T26S R4W WM  
 SURVEYED FOR CHARLES L. LONG JR. & VERONNE E. LONG  
 & GEORGE MATTHEWS & JEANETTE MASHORE  
 BY BRUCE R. ROGERS  
 SURVEYED OCT 1995 SCALE 1=200'

FILED

Date: 2-1-96 By: JC  
 This survey consists of:  
 Map: M 123-23  
 Narrative: \_\_\_\_\_  
 Corner Rpt: \_\_\_\_\_

DOUGLAS COUNTY  
 SURVEYOR *CB*

- FD 5/8" IR PER M62-31
- FD 5/8" IR PER M58-19
- SET 5/8" x 30" I.R. W CAP LS 660
- ⊙ BRASS CAP RECORD M58-19
- ( ) RECORD DATA M58-19



REGISTERED  
 PROFESSIONAL  
 LAND SURVEYOR

*Bruce R. Rogers*

OREGON  
 JULY 10, 1964  
 BRUCE R. ROGERS  
 860

Exp. 12/31/96

APPROVED  
 DOUGLAS COUNTY PLANNING DIRECTOR *Keith L. Cubic* DATE 2/1/96  
 PLANNING FILE NO. 96-013

COUNTY SURVEYORS FILE DATA  
 DO NOT REMOVE FROM OFFICE

MAP FILE M 123-23

MAP FILE M 123-23