

BOUNDARY LINE SURVEY
LOCATED BETWEEN SEC. 24, T.21 S., R.9 W., AND SEC. 19, T.21 S., R.8 W., W.M.
DOUGLAS COUNTY, OREGON

FILED
Date: 2/1/96 By: PC
This survey consists of:
Map: M123-22
Narrative: _____
Corr: Rpt: _____
J. DOUGLAS COUNTY SURVEYOR JC

SURVEY FOR:

IP TIMBER LANDS OPERATING CO., LTD
711 PORT DOCK ROAD
REEDSPORT, OR. 97467

SURVEY BY:

CLYDE F. MULKINS
TIMBER CRUISING & ENGINEERING
P.O. BOX 750
COOS BAY, OR. 97420



EXPIRES 12-31-96

LEGEND

- ⊙ FD. CORNERS AS SHOWN
- SET 3/4" X 36" ALUM. ROD WITH A 3 1/4" I.P.T.O. ALUM. CAP (WITH MAG. INSERT)
- ▲ 6" ALUM. POST PER NARRATIVE - THESE LINES ARE BLAZED, PAINTED, AND FLAGGED
- ⬆ CROSSING POST
- [] CORNER REF. NO.
- () 1945 GLO DISTANCE AND BEARING
- ←←← CREEK / DRAW
- <<< RIDGES
- ⌒ BLUFF

CORNER NOTES

CORNER #1: FD. A 1945 GLO BRASS CAP AT THE CORNER OF SECTIONS 19 AND 30 T.21 S., R.8 W., ONLY FROM WHICH: FD. REMAINS OF 1945 52" DF (STUMP) BT BADLY BURNED BEARS S20°E, 135 lks.; FD. 1945 54" DF (UPROOTED STUMP) BT. NO VISIBLE MARKS BEARS N17 1/2°E 360 lks.; 1 SCRIBED "T21S R8W S19 BT" ON A 14" DF BEARS N6°E, 26.3 FT.; 1 SCRIBED "T21S R8W S30 BT" ON A 12" DF BEARS S62°E, 4.8 FT.; 1 SCRIBED "T21S R8W S30 BT" ON A 15" DF BEARS S4°E, 16.7 FT.; 1 SCRIBED "T21S R9W X BT" ON A 12" DF BEARS N59°W, 21.0 FT.; FD. A 13" DF WITH A HEALED FACE BEARS N54°E, 7.3 FT. - NOT TAGGED; FD. A 15" DF WITH A HEALED FACE BEARS S59°E, 19.1 FT. - NOT TAGGED.

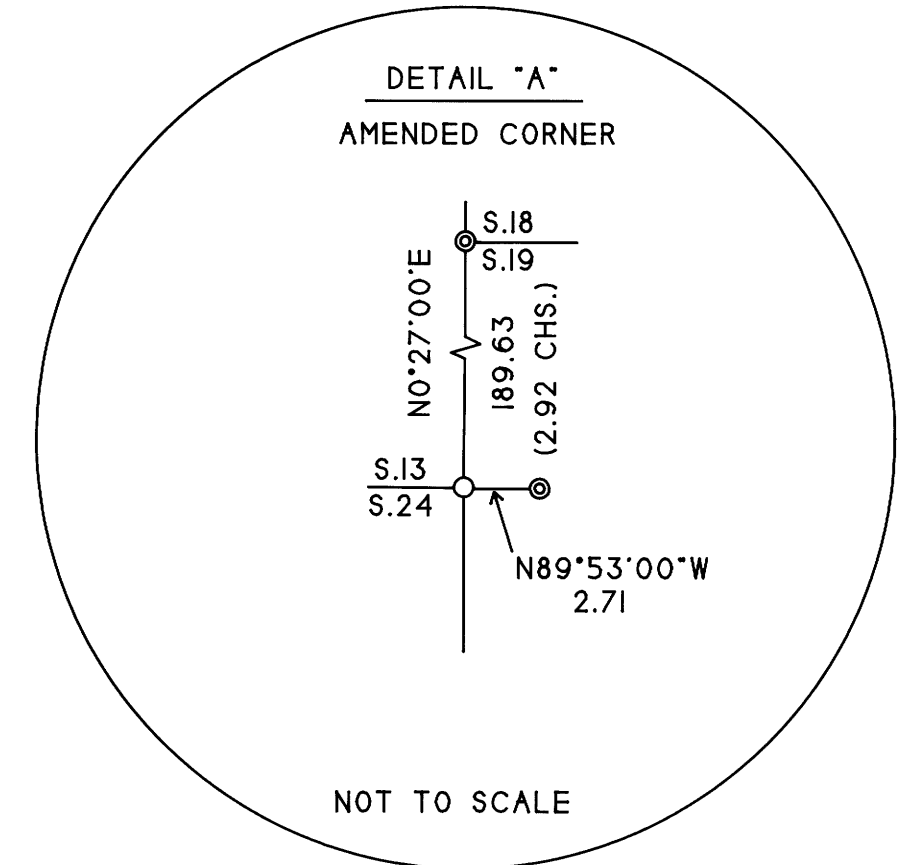
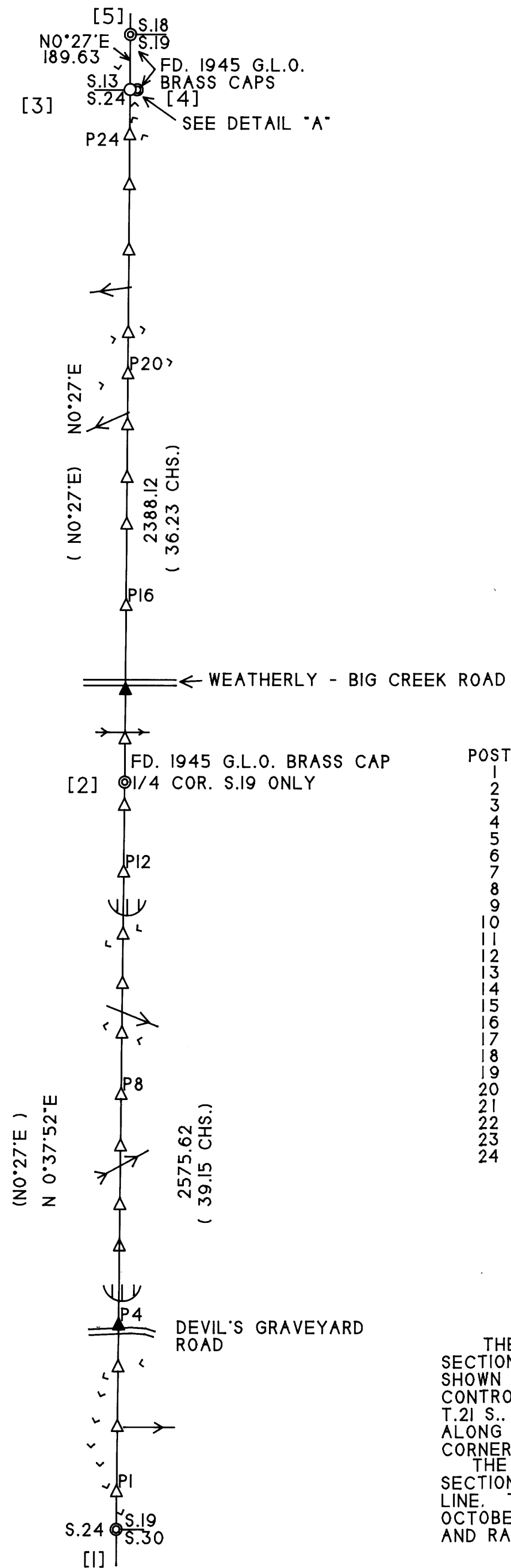
CORNER #2: FD. A 1945 GLO BRASS CAP AT THE 1/4 CORNER FOR SECTION 19 ONLY FROM WHICH: FD. A 13" DF WITH A HEALED FACE BEARS S56°E, 33.5 FT.; 1 SCRIBED "1/4 X BT" ON A 15" DF BEARS N1°W, 12.1 FT. (ORIGIN UNKNOWN); 1 SCRIBED "1/4 X BT" ON A 16" DF BEARS S3°W, 9.5 FT.; 1 SCRIBED "1/4 X BT" ON AN 11" DF BEARS N61°W, 10.7 FT.

CORNER #3: SET AN I.P.T.O. ALUM. MONUMENT AT THE AMENDED CORNER FOR THE CORNER OF SECTIONS 13 AND 24 T.21 S., R.9 W., ONLY FROM WHICH: 1 SCRIBED "AM CC X BT" ON A 15" DF BEARS N44°E, 13.9 FT.

CORNER #4: FD. A 1945 GLO BRASS CAP AT THE CORNER OF SECTIONS 13 AND 24 T.21 S., R.9 W., ONLY FROM WHICH: FD. A 15" DF WITH A HEALED FACE BEARS N15°W, 45.4 FT. (ORIGIN UNKNOWN); 1 SCRIBED "T21S R9W S13 CC BT" ON A 13" DF BEARS N38°W, 13.8 FT.; 1 SCRIBED "T21S R9W S24 CC BT" ON A 16" DF BEARS S42°W, 9.4 FT.; 1 SCRIBED "T21S R9W S24 CC BT" ON A 15" DF BEARS S11°W, 16.8 FT.

CORNER #5: FD. A 1945 GLO BRASS CAP AT THE CORNER OF SECTIONS 18 AND 19, T.21S., R.8 W., ONLY FROM WHICH: FD. A 45" DF STUMP WITH A HEALED FACE BEARS N45 1/4°E, 151 lks.; FD. A 60" DF STUMP WITH A HEALED FACE BEARS S66 1/4°E, 62 lks.

BASIS OF BEARING - ASSUMED PER 1945 GLO NOTES BETWEEN CORNERS [2] AND [5]



POSTING NOTES				REFERENCE	
POST	DIST.	DIR.	TO SE SEC	TREE	BEARS DIST.
1	133	S		13" DF	N33°W 8.0
2	357	S		17" DF	S24°W 17.1
3	563	S		14" DF	N45°W 9.4
4	708	S		14" DF	S76°W 23.2
5	980	S		15" DF	S08°W 14.0
6	1122	S		13" DF	S23°W 13.8
7	1324	S		9" DF	S56°W 17.2
8	1502	S		10" DF	S37°W 13.6
9	1714	S		14" DF	S34°W 1.7
10	1885	S		13" DF	S49°W 10.7
11	2055	S		15" DF	S39°W 11.5
12	2270	S		15" DF	N43°E 3.6
13	2500	S		10" DF	S65°E 4.9
14	153	S	W 1/4	17" DF	S52°E 23.7
15	323	S		20" DF	S71°E 38.9
16	613	S		18" DF	N83°E 3.9
17	894	S		17" DF	N68°W 11.8
18	1054	S		14" DF	N60°W 4.5
19	1236	S		13" DF	S82°E 7.2
20	1412	S		13" DF	S55°E 2.5
21	1554	S		10" DF	S41°W 2.0
22	1839	S		16" DF	S56°W 8.9
23	2064	S		13" MAPLE	N09°E 12.1
24	2236	S		17" DF	S05°E 5.9

NARRATIVE

THE PURPOSE OF THIS SURVEY WAS TO MARK THE LINE COMMON TO SECTION 19, T.21 S., R.8 W. AND SECTION 24, T.21 S., R.9 W., AS SHOWN FOR TIMBER MANAGEMENT OPERATIONS. RECORD SURVEYS USED FOR CONTROL ARE 1945 BLM DEPENDENT RESURVEY OF THE WEST BOUNDARY OF T.21 S., R.8 W.; BLM OFFICE COORDINATES FOR HUBS OF A TRAVERSE ALONG THE LINE COMMON TO SECTIONS 13 AND 24, T.21 S., R.9W; AND CORNER RENEWAL #22 T.21 S., R.9W, W.M. THE TRAVERSE WAS A CLOSED LOOP. AN AMENDED CLOSING CORNER OF SECTIONS 13 AND 24 WAS SET N89°53'00"W, 2.71 FT. TO MARK TRUE LINE. THE FIELD WORK WAS PERFORMED BETWEEN SEPTEMBER 18, AND OCTOBER 16, 1995. ASSISTING ME WITH THIS SURVEY WAS TROY RAMBO AND RANDY MADDEN.

COUNTY SURVEYORS FILE DATA
DO NOT REMOVE FROM OFFICE

MAP FILE M123-22

MAP FILE M123-22