

# LONE ROCK TIMBER CO.

PO BOX 1127 ROSEBURG OREGON 97470 DATE: SEPTEMBER 1995  
 SECTION 26, TOWNSHIP 26 SOUTH, RANGE 3 WEST, W.M. DOUGLAS COUNTY, OREGON  
 RATTLESNAKE CREEK SURVEY SCALE 1" = 600'

COUNTY SURVEYORS FILE DATA  
 DO NOT REMOVE FROM OFFICE

FILED

Date: 12/1/95 By: BC  
 This survey consists of:  
 Map: M122-80  
 Narrative: \_\_\_\_\_  
 Corner Rpt: \_\_\_\_\_

DOUGLAS COUNTY SURVEYOR CB

## NARRATIVE

THIS SURVEY WAS CONDUCTED TO ESTABLISH PROPERTY CORNERS AND PROPERTY LINES FOR TIMBER CUTTING PURPOSES. WE INITIATED THIS SURVEY AT THE NORTH 1/4 OF SECTION 26, A BLM BRASS CAP SET BY PROPORTION TRAVERSING RANDOMLY WESTERLY TO THE NORTHWEST CORNER OF SECTION 26 A BLM BRASS CAP SET BY PROPORTION. WE THEN CONTINUED SOUTHERLY TO THE WEST 1/4 OF SECTION 26 A BLM BRASS CAP SET BY PROPORTION AND THEN EASTERLY TO THE CENTER WEST 1/16 A BLM BRASS CAP. RETURNING TO THE NORTH 1/4 OF SECTION 26, WE TRAVERSE RANDOMLY SOUTHERLY TO THE CENTER NORTH 1/16 OF SECTION 26 A BLM BRASS CAP. ALL OUR BEARINGS AND DISTANCES ARE WITHIN ERROR LIMITS OF THE BLM SURVEY OF SECTION 26 SO WE CALCULATE THE POSITION OF THE NORTHEAST 1/16 CORNER AND THE NORTH 1/16 CORNER BETWEEN SECTIONS 26 AND 27. RETURNING TO THE CENTER WEST 1/16 OF SECTION 26 WE TRAVERSE BACK TO CLOSE A PORTION OF OUR SURVEY NEAR THE NORTH 1/16 CORNER SETTING ALUMINUM CAPS AT OUR COMPUTED POINTS FOR THE NORTHEAST 1/16 AND NORTH 1/16 CORNERS. WE THEN MARKED THE TRUE PROPERTY LINES AS SHOWN. THIS SURVEY WAS DONE WITH A LIETZ SET 2 TOTAL STATION WITH GARY ANGIOLET, GERALD RAGON AND IGNACIO ROMAN ASSISTING ME.

## CORNER INFORMATION

THE FOLLOWING IS A RECORD OF ALL CORNERS FOUND OR SET DURING THE COURSE OF THIS SURVEY.

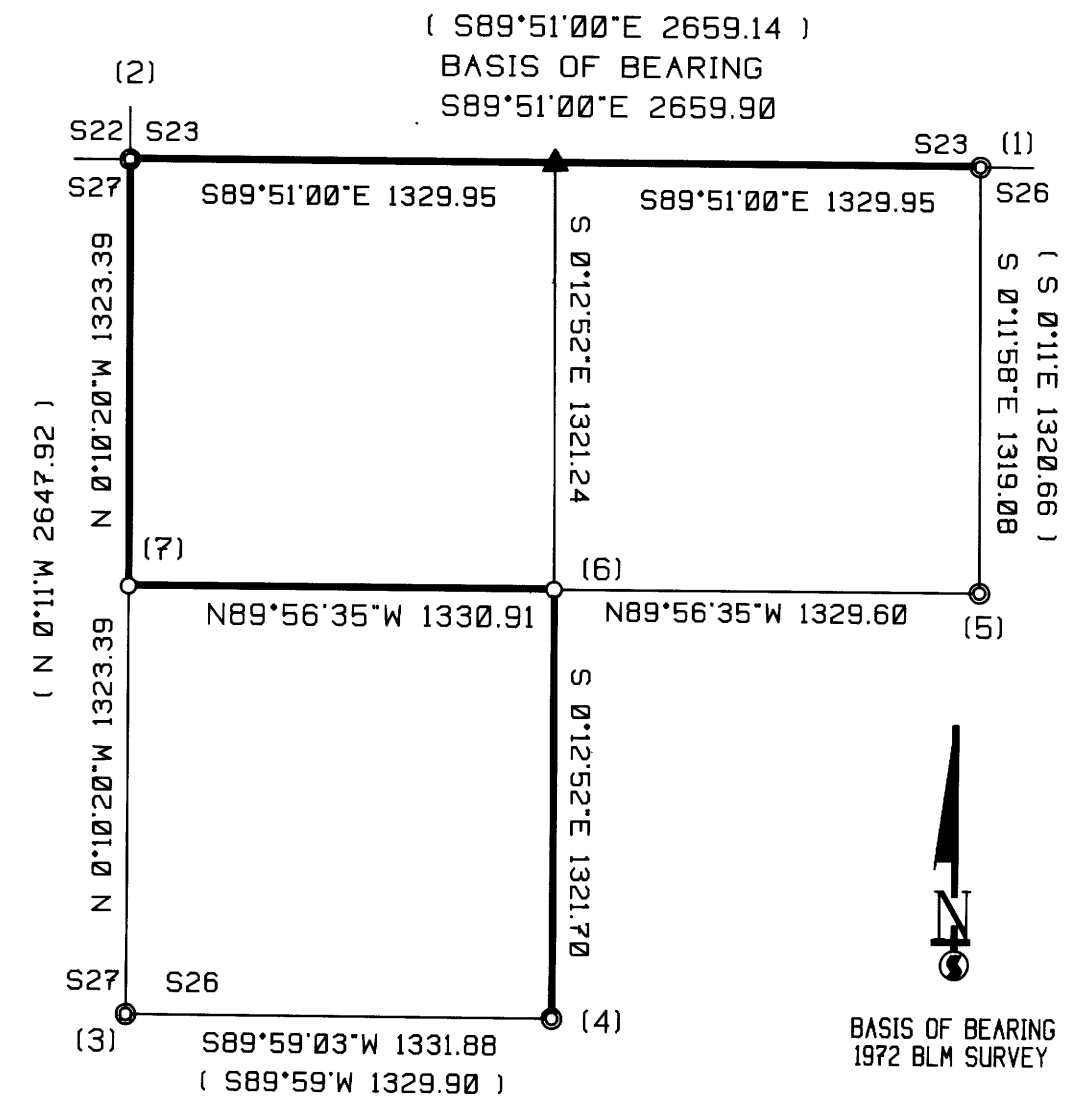
- 1) NORTH 1/4 CORNER SECTION 26  
 FOUND BLM BRASS CAP SET 1972 2" FEET BELOW GROUND LEVEL.  
 -- 18" DOUGLAS FIR BEARS N25 3/4°E, 38.8 FEET (RECORD N26°E, 39.6 FEET) WELL HEALED FACE, WE TAG  
 -- 29" GRAND FIR BEARS S21 1/2°W, 66.8 FEET (RECORD S22°W, 66.66 FEET) WELL HEALED FACE, BLM TAG  
 CORNER SITS ON WESTERLY EDGE OF OLD ROCK ROAD IN DITCH LINE.
- 2) NORTHWEST SECTION CORNER SECTION 26  
 FOUND BLM BRASS CAP SET 1972 IN GOOD CONDITION  
 -- 19" DOUGLAS FIR BEARS S27 1/2°E, 14.7 FEET (RECORD S30°E, 15.18 FEET) WELL HEALED FACE AND BLM TAG  
 -- 15" DOUGLAS FIR BEARS N58 3/4°W, 17.65 FEET (RECORD N61°W, 17.82 FEET) WELL HEALED FACE AND BLM TAG  
 -- 24" GRAND FIR BEARS S85°W, 61.4 FEET AS PER RECORD, WELL HEALED FACE, BLM AND LRT TAGS  
 -- 26" GRAND FIR BEARS N47 1/2°E, 86.5 FEET (RECORD N52°E, 86.46 FEET) WELL HEALED FACE AND BLM TAG  
 CORNER LIES ON FLAT BENCHY GROUND APPROXIMATELY 2 CHAINS NORTHEAST OF SWEEPING CORNER IN ROCK ROAD.
- 3) WEST 1/4 CORNER SECTION 26  
 FOUND BLM BRASS CAP 0.8 FEET ABOVE GROUND IN GOOD CONDITION.  
 -- 16" INCENSE CEDAR STUMP BEARS N46 1/4°E, 24.0 FEET (RECORD N45°E, 24.4 FEET) SCRIBING VISIBLE AND CHAMPION TAG.  
 -- 16" INCENSE CEDAR BEARS S61 1/2°W, 39.8 FEET (RECORD S61°W, 39.6 FEET) WELL HEALED FACE AND BLM TAG  
 CORNER LIES ON A SOUTH SLOPE IN MOUND OF ROCK APPROXIMATELY 200 FEET NORTH OF ROCK ROAD.
- 4) CENTER WEST 1/16 CORNER SECTION 26  
 FOUND BLM BRASS CAP SET 1972 0.3 FEET ABOVE GROUND IN GOOD CONDITION.  
 -- 17" DOUGLAS FIR BEARS S43 3/4°E, 23.40 FEET (RECORD S45°E, 23.1 FEET) WELL HEALED FACE, BLM TAG  
 -- 21" DOUGLAS FIR STUMP BEARS N6 3/4°W, 28.4 FEET (RECORD N10°W, 28.4 FEET) WELL HEALED FACE, BLM TAG  
 CORNER LIES ON WESTERLY SLOPE 2.0 FEET EAST OF CUT BANK FOR SKID ROAD.
- 5) CENTER NORTH 1/16 CORNER SECTION 26  
 FOUND BLM BRASS CAP SET 1972 0.5 FEET BELOW GROUND IN GOOD CONDITION.  
 -- 17" DOUGLAS FIR BEARS N14 1/2°W, 33.0 FEET (RECORD N12°W, 33.0 FEET) WELL HEALED FACE, LRT TAG  
 -- 14" DOUGLAS FIR BEARS S1 1/2°E, 32.2 FEET (RECORD S2°E, 32.4 FEET)  
 CORNER LIES IN EAST TIRE TRACK ON A SOUTH WESTERLY ROAD.
- 6) NORTHWEST 1/16 CORNER SECTION 26  
 SET 5/8" X 40" IRON ROD WITH ALUMINUM CAP MARKED LONE ROCK TIMBER NW1/16 S26 1995 PLS 2291 0.5 FEET ABOVE GROUND.  
 -- 13" DOUGLAS FIR BEARS S52°E, 13.1 FEET, WE SCRIBE NW1/16 S26 B.T. AND TAG TREE  
 -- 9" DOUGLAS FIR BEARS N89 1/2°W, 9.4 FEET, WE SCRIBE NW1/16 S26 B.T. AND TAG TREE  
 CORNER LIES ON EAST FACING SLOPE IN MIDDLE OF OLD CAT ROAD.
- 7) NORTH 1/16 CORNER BETWEEN SECTIONS 26 AND 27  
 SET 5/8" X 40" IRON ROD WITH ALUMINUM CAP MARKED LONE ROCK TIMBER NW1/16 S26 1995 PLS 2291 0.5 FEET ABOVE GROUND.  
 -- 15" DOUGLAS FIR BEARS N6 1/2°E, 20.5 FEET, WE SCRIBE N1/16 S26 B.T. AND TAG TREE  
 -- 9" DOUGLAS FIR BEARS N38°W, 45.4 FEET, WE SCRIBE N1/16 S27 B.T. AND TAG TREE  
 CORNER LIES APPROXIMATELY 35 FEET NORTH OF ROCK ROAD.

REGISTERED PROFESSIONAL LAND SURVEYOR  
*Ken W. Hoffine*  
 OREGON JULY 16, 1987  
 KEN W. HOFFINE  
 2291

EXPIRES 6-30-97

## LEGEND:

- ⊙ - FOUND MONUMENT
- - SET 5/8" BY 40" IRON ROD WITH ALUMINUM CAP
- ▲ - COMPUTED CORNER
- - PROJECTED LINES
- - LINES FLAGGED, BLAZED & TAGGED
- ( ) - 1972 BLM SURVEY



MAP FILE M122-80

MAP FILE M122-80