

# BOUNDARY LINE SURVEY

LOCATED IN NE1/4 SECTION 16  
TWP. 21 S., RNG. 8 W., W.M., DOUGLAS CO., OR

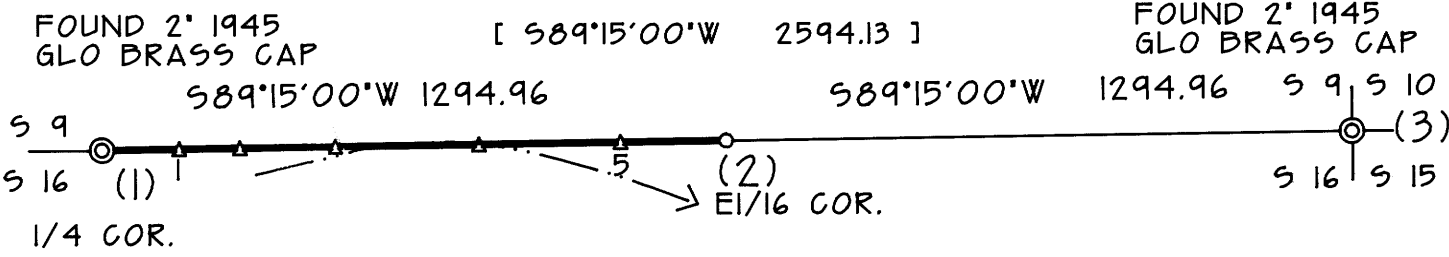
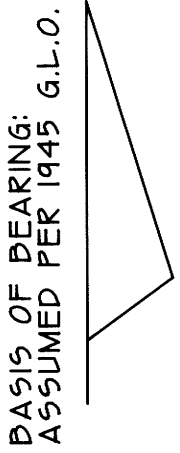
PREPARED FOR:

PREPARED BY:

IP TIMBERLANDS OPERATING CO. LTD.  
711 PORT DOCK ROAD  
REEDSPORT, OR 97467

CLYDE F. MULKINS  
TIMBER CRUISING & ENGINEERING  
P.O. BOX 750  
COOS BAY, OR 97420

NORTH



SCALE: 1" = 400'  
AUGUST 20, 1995

### POSTING NOTES

POST	DIR	DISTANCE	TO	TREE	BEARS	REFERENCE	DIST.
1	W	160	N 1/4	9' DF	S 14'W		7.5
2	W	286	:	9' ALDER	S 12'W		16.4
3	W	484	:	14' ALDER	S 24'W		30.4
4	W	782	:	16' ALDER	N 2'E		15.2
5	W	1076	:	7' DF	N 69'E		5.3

REGISTERED  
PROFESSIONAL  
LAND SURVEYOR

OREGON  
JULY 16, 1982  
CLYDE F. MULKINS  
2006

EXPIRES 12/31/96

### CORNER NOTES

CORNER #1: AT 1/4 CORNER OF SECTIONS 9 AND 16 FOUND 1945 GLO 2 1/2" BRASS CAP, FROM WHICH: FD. 1945 GLO W.HEM STUMP WITH NO MARKS, RECORD 36" W.HEM, BEARS N16°W 106 LKS, STUMP CENTER INDETERMINATE; FD. 1945 GLO LARGE W.HEM ROTTED STUMP, RECORD 50" W.HEM BEARS 589°E 40 LKS, STUMP CENTER INDETERMINATE; FD. 32" D.FIR ROTTED STUMP OF UNKNOWN ORIGIN, BEARS NORTH 51.0 FT., VISABLE SCRIBE MARKS; FD. 38" D.FIR OF UNKNOWN ORIGIN (BLM TAG) BEARS 550°W 3.6 FT., WITH HEALED FACE; FD. 6" STEEL POST BESIDE CORNER; 1 SCRIBE 1/4 S 9 BT ON A 10" DF, BEARS N7 1/2°W 27.4 FT.; 1 SCRIBE 1/4 S 9 BT ON A 9" DF, BEARS N48°E 31.2 FT.; 1 SCRIBE 1/4 S 16 BT ON A 9" DF, BEARS 570°E 35.8 FT.; SET 6" ALUM POST BESIDE CORNER WITH 'LAND SURVEY MONUMENT' SIGN.

CORNER #2: AT THE EAST 1/16 CORNER BETWEEN SECTIONS 9 AND 16, 1 SET A 3 1/2" ALUMINUM I.P.T.O. MONUMENT FOR THE 1/16 COR. APPROX. 30" INTO THE GROUND, FROM WHICH; 1 SCRIBE 'E 1/16 S 9 BT' ON A 16" DF, BEARS N59°E 19.7 FT. 1 SCRIBE 'E 1/16 S 16 BT' ON AN 11" DF, BEARS 564°W 18.1 FT. SET 6" ALUM POST BESIDE CORNER WITH 'LAND SURVEY MONUMENT' SIGN.

CORNER #3: AT THE CORNER OF SECTIONS 9,10,15 AND 16, FOUND 1945 GLO 2 1/2" BRASS CAP, FROM WHICH; FD. REMAINS OF ORIGINAL 72" DF STUMP, WITH NO MARKS, BEARS N43°W 18.0 FT. TO FACE, RECORD N45°W 20 LKS.; FD. NO REMAINS OF ORIGINAL MAPLE, RECORD 567°W 27 LKS.; FD. 1945 GLO 44" DF STUMP, BEARS 542°E 20.1 FT., RECORD 540°E 30 LKS.; FD. 1945 GLO 44" DF STUMP, BEARS 51°E 40.2 FT., RECORD 52°W 60 LKS.; FD. 1945 GLO 48" DF STUMP, BEARS N4°W 161.0 FT., RECORD N4°W 243 LKS.; FD. NO REMAINS OF 1945 GLO 48" DF, RECORD N39 1/2°E 102 LKS.; FD. 6" STEEL POST BESIDE CORNER; 1 SCRIBE 'S 10 BT' ON A 22" DF, BEARS N48°E OF 7.4 FT.; 1 SCRIBE 'S 15 BT' ON A 14" DF, BEARS 519°E 11.2 FT.; 1 SCRIBE 'S 16 BT' ON A 13" MAPLE, BEARS 540°W 39.3 FT.; 1 SCRIBE 'S 9 BT' ON A 15" DF, BEARS N68°W 26.5 FT.; SET 6" ALUM POST BESIDE CORNER WITH 'LAND SURVEY MONUMENT' SIGN.

FILED

Date: 11-22-95 By: *JF*  
This survey consists of:  
Map: M122-77  
Narrative: \_\_\_\_\_  
Corner Rpt: \_\_\_\_\_

DOUGLAS COUNTY SURVEYOR

### LEGEND

- ⊙ CORNERS FOUND AS SHOWN
- CORNERS SET - 3 1/2" ALUM. IPTO CAP ON 3/4" x 36" ALUM. ROD
- ( ) CORNER REFERANCE NUMBER
- [ ] G.L.O. PLAT MEASUREMENTS
- CREEK DRAW
- LINES BLAZED, PAINTED & FLAGGED
- △ 6" ALUM. LINE POSTS & IPTO STICKER WITH PLASTIC INCASED MAGNET BURIED 12 TO 18" DEEP 1 FT. EAST OF POST. SEE POSTING NOTES FOR REF. TAGS.

### NARRATIVE:

THE PURPOSE OF THIS SURVEY WAS TO ESTABLISH THE WEST HALF OF THE EAST HALF OF THE NORTH LINE OF SECTION 16, T21S, R8W, W.M., DOUGLAS CO. OREGON. CONTROL FOR THIS SURVEY WAS BASED ON A 1945 DEPENDENT RESURVEY OF THE EXTERIOR LINES OF SAID SECTION 16 BY THE GENERAL LAND OFFICE.

ASSISTING ME WITH THIS SURVEY WERE: FLOYD VANDERVELDEN 'LS 1047', JASON W SMITH, TROY RAMBO AND RANDY MADDEN. THE FIELD WORK WAS PREFORMED BETWEEN JULY 17 AND AUGUST 7, 1995. THE TRAVERSING WAS DONE WITH A TOPCON GTS-2B. THIS WAS A CLOSED TRAVERSE WITH A LINEAR ERROR OF 0.03 FEET AND AN ANGULAR ERROR OF 14 SECONDS. NO ADJUSTMENTS WERE MADE TO THE TRAVERSE.

COUNTY SURVEYORS FILE DATA  
DO NOT REMOVE FROM OFFICE