

MAP FILE M 122-70

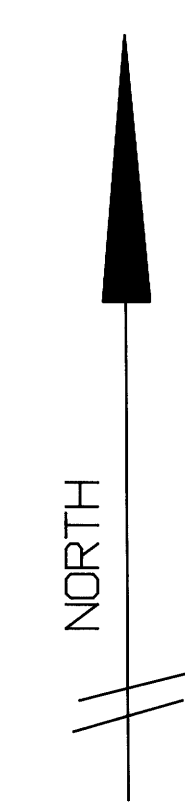
FILED

COUNTY SURVEYORS FILE DATA  
DO NOT REMOVE FROM OFFICE

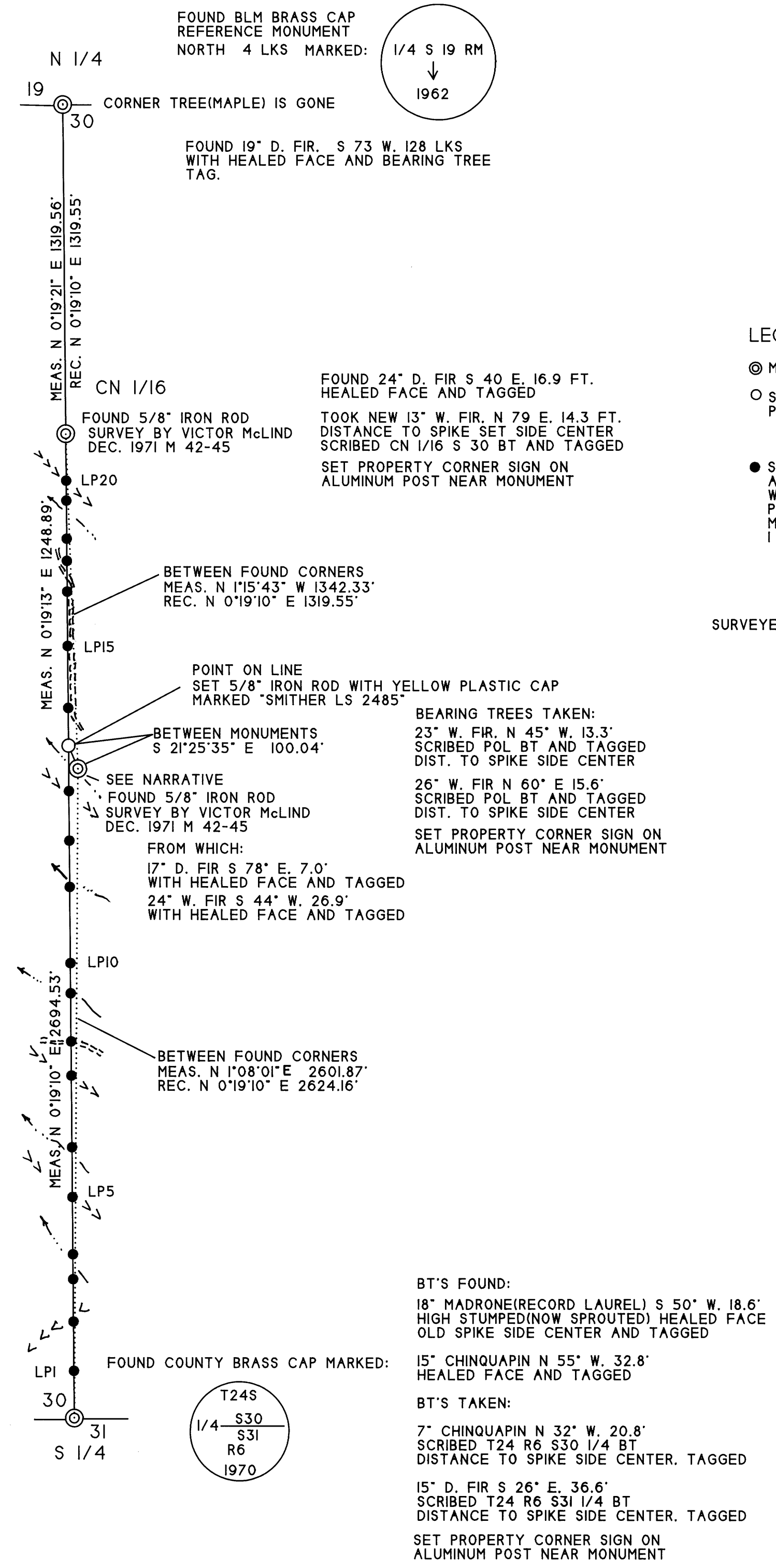
Date: 11-13-95 By: Jc  
This survey consists of:  
Map: M 122-70  
Narrative:  
Corner Rpt:

DOUGLAS COUNTY  
SURVEYOR CB

TOWNSHIP 24 SOUTH  
RANGE 6 WEST  
SECTION 30  
DOUGLAS COUNTY, OREGON  
SCALE 1" = 400'  
OCTOBER 1995



BASIS OF BEARING M 42-45  
BETWEEN S1/4 AND N1/4  
MEASURED N 0°19'10" E 5262.98'  
RECORD N 0°19'10" E 5263.26'



LEGEND

- ⊙ MONUMENT FOUND AS NOTED
- SET 5/8" IRON ROD WITH YELLOW PLASTIC CAP MARKED:  
" SMITHER L.S. 2485 "
- SET 6 FOOT ALUMINUM LINE POST APPROXIMATELY 30 INCHES IN GROUND WITH I.P. TIMBERLANDS OPERATING CO., LTD PROPERTY LINE DECAL. A MAGNETIC MARKER WAS PLACED APPROXIMATELY 1 FOOT IN GROUND ALONGSIDE POST.

SURVEYED FOR: I.P. TIMBERLANDS OPERATING COMPANY, LTD.  
711 PORT DOCK ROAD  
REEDSPORT, OREGON 97467

REGISTERED  
PROFESSIONAL  
LAND SURVEYOR

*Gary T. Smither*  
OREGON  
JANUARY 29, 1971  
GARY T. SMITHER  
2485

EXPIRATION DATE: 30 JUNE 1996

LINE POST DETAIL

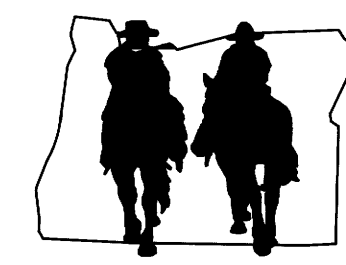
POST	DIRECTION TO S 1/4	DIST. FT.	REFERENCE TREE	BEARS	DIST. FT.
LP1	SOUTH	189	26" D. FIR	S 50 W	10.8
LP2	SOUTH	386	22" D. FIR	N 10 E	2.4
LP3	SOUTH	556	11" D. FIR	S 48 W	3.1
LP4	SOUTH	656	8" D. FIR	N 41 E	4.2
LP5	SOUTH	885	9" D. FIR	N 55 E	6.5
LP6	SOUTH	1085	17" D. FIR	S 72 E	9.3
LP7	SOUTH	1372	19" D. IR	S 55 E	2.2
LP8	SOUTH	1509	11" D. FIR	S 75 W	4.6
LP9	SOUTH	1702	37" CEDAR	S 7 E	12.1
LP10	SOUTH	1829	12" W. FIR	N 41 E	11.2
LP11	SOUTH	2128	17" W. FIR	N 60 W	3.5
LP12	SOUTH	2313	16" W. FIR	S 77 E	4.0
LP13	SOUTH	2512	8" W. FIR	S 86 W	4.8
LP14	SOUTH	2845	11" D. FIR	N 15 E	1.0
LP15	SOUTH	3093	20" D. FIR	N 52 E	5.3
LP16	SOUTH	3311	15" D. FIR	N 15 W	16.1
LP17	SOUTH	3434	13" D. FIR	N 63 W	8.9
LP18	SOUTH	3523	8" D. FIR	N 75 E	2.0
LP19	SOUTH	3676	16" D. FIR	N 78 E	9.0
LP20	SOUTH	3756	12" D. FIR	WEST	4.2

SURVEY NARRATIVE

THIS SURVEY WAS CONDUCTED FOR I.P. TIMBERLANDS OPERATING COMPANY, LTD. UNDER CONTRACT NUMBER SA95-10. TO POST AND BLAZE LINE BETWEEN THE S1/4 AND THE C1/4 OF SECTION 30, TOWNSHIP 24 SOUTH, RANGE 6 WEST. WE FOUND A 22.29 FOOT SHORTAGE BETWEEN S1/4 AND C1/4 COMPARED TO THE 1972 McLIND SURVEY, M 42-45 (OUR CLOSURE 1:32000). THE SURVEY WAS EXTENDED NORTH FROM C1/4 TO N1/4 (CLOSURE 1:24000) TO CHECK IF THE C1/4 WAS ON THE NORTH-SOUTH CENTER LINE AND TO TIE THE CNI/16 TO CHECK IT AGAINST THE RECORD. WE UTILIZED McLIND'S RECORD BEARING, N 00°19'10" E. AS A BASIS OF BEARING FROM THE S1/4 TO THE N1/4. WE FOUND THAT THE CNI/16 WAS VIRTUALLY WHERE THE RECORD SAID IT WAS BUT THAT THE C1/4 WAS OFF THE TRUE LINE 36.97 FEET. WE ALSO FOUND THAT THE LENGTH OF OUR MILE WAS IN CLOSE AGREEMENT WITH McLIND'S RECORD AND THUS CONCLUDED THAT THE DISCREPANCY AT THE C1/4 WAS PROBABLY DUE TO AN ERROR IN A MOVE WHEN SETTING THE MONUMENT.

FOR FUTURE WORK, I.P. REQUESTED THAT WE SET A MONUMENT AS A POINT ON LINE NEAR McLIND'S C1/4 FOR THE PURPOSE OF CORRECTING THE LOCATION OF THE C1/4. WE POSTED AND BLAZED PER I. P. TIMBERLANDS OPERATING COMPANY, LTD. CONTRACT SPECIFICATIONS FROM THE S1/4 TO THE CNI/16 OF SECTION 30 TO DELINEATE I.P. PROPERTY BOUNDARY.

SURVEYED BY:



**GARY T. SMITHER**  
**OREGON SURVEYOR**

P.O. BOX 545, NORTH BEND, OREGON 97459  
700 S. BROADWAY #19, COOS BAY, OREGON 97420  
FAX & PHONE: (503) 267-6026

MAP FILE M 122-70