

MAP FILE M122-42

FILED

COUNTY SURVEYORS FILE DATA
DO NOT REMOVE FROM OFFICE

Date: 9-21-95 By: JP
This survey consists of:
Map: M122-42
Narrative:
Corner Rpt: _____

DOUGLAS COUNTY
SURVEYOR

BOUNDARY LINE ADJUSTMENT

IN THE SE1/4 OF SEC. 29, T28S, R6W, W.M.

DOUGLAS COUNTY, OREGON

SCALE: 1" = 100' AUGUST 1994

SURVEYED FOR:
WINSTON-DILLARD SCHOOL DISTRICT
165 DYKE ROAD
WINSTON, OREGON 974986

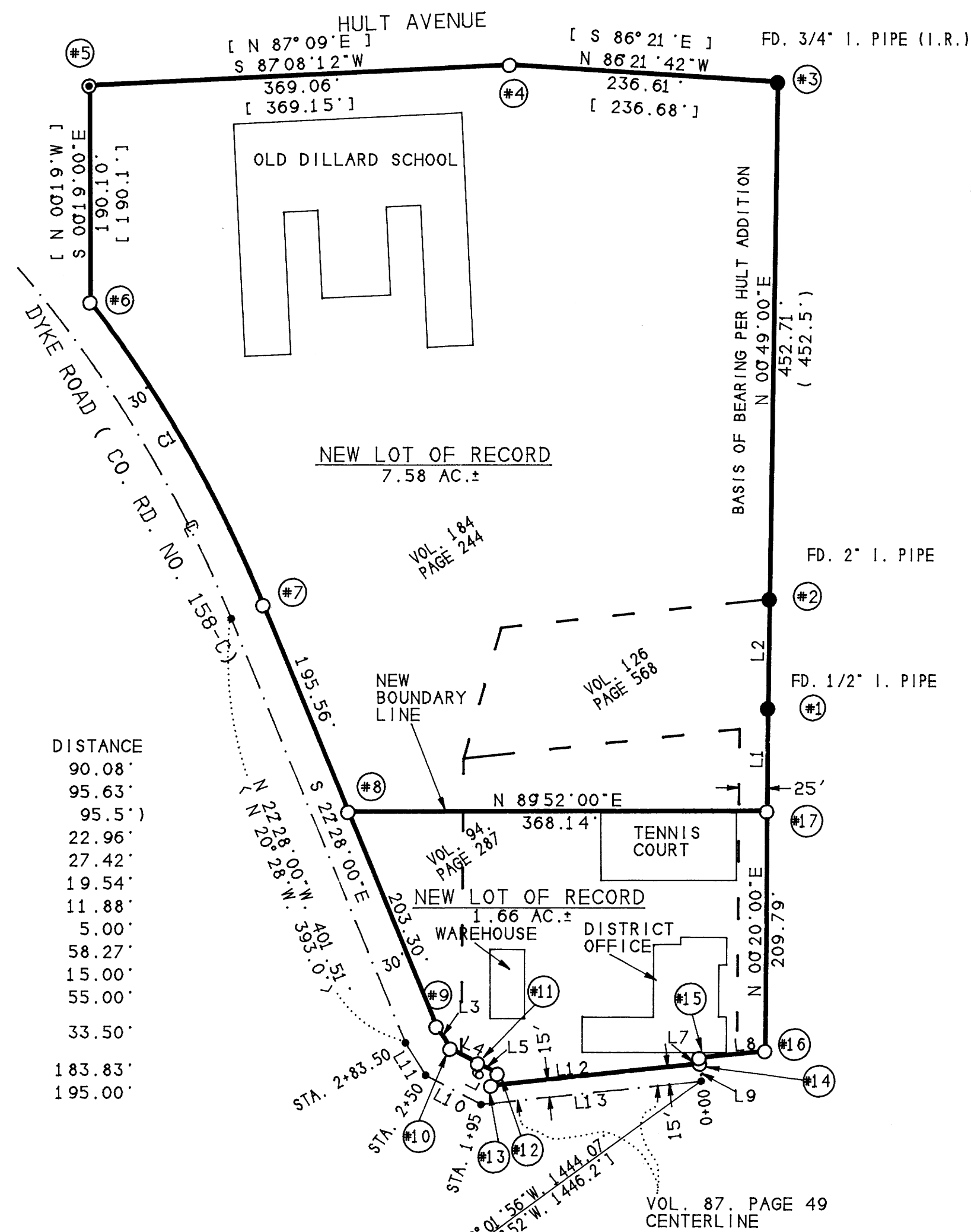
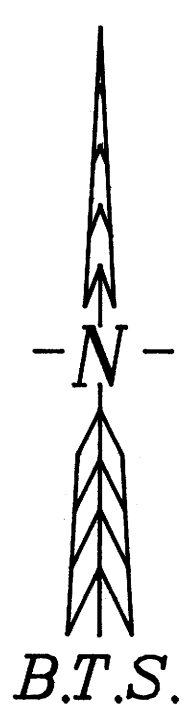
SURVEYED BY:
BTS ENGINEERING & SURVEYING INC.
431 SE. MAIN STREET
ROSEBURG, OR 97470
(503) 673-0966 FAX (503) 673-0105

APPROVALS:

Keith L. Cubic 9/21/95
COUNTY PLANNING DIRECTOR DATE

LEGEND:

- = SET 5/8" x 30" I. ROD W/PLASTIC CAP MARKED "BTS ENG-SURV"
- = FOUND AS NOTED PER HULT ADDITION VOL. 9, PAGE 16
- ⊙ = FOUND 1/2" I. ROD PER M23-17
- = COMPUTED CENTERLINE POINTS
- < > = RECORD CALLS PER VOL. 108, PAGE 303
- () = RECORD CALLS PER HULT ADDITION
- [] = RECORD CALLS PER M23-17



LINE	BEARING	DISTANCE
L 1	N 00°20'00"E	90.08'
L 2	N 00°44'14"E	95.63'
	(N 00°43'E	95.5')
L 3	S 32°00'00"E	22.96'
L 4	S 62°00'00"E	27.42'
L 5	S 62°00'00"E	19.54'
L 6	S 28°00'00"W	11.88'
L 7	N 06°08'00"W	5.00'
L 8	N 83°52'00"E	58.27'
L 9	S 06°08'00"E	15.00'
L 10	N 62°00'00"W	55.00'
	< N 60°W >	
L 11	N 32°00'00"W	33.50'
	< N 30°W >	
L 12	N 83°52'00"E	183.83'
L 13	S 83°52'00"W	195.00'

NARRATIVE:

THE PURPOSE OF THIS SURVEY WAS TO ADJUST THE BOUNDARY LINE BETWEEN 2 WINSTON - DILLARD SCHOOL DISTRICT LOTS OF RECORD DESCRIBED BY VOL. 94, PAGE 287; VOL. 126, PAGE 568; AND VOL. 184, PAGE 244 AND SURVEYED UNDER C.S. 37/63 AND M 23-17. DEED ANALYSIS REVEALED A MINOR ERROR OF CLOSURE (0.5 FOOT) IN VOL. 94, PAGE 287 OCCURRING AT THE SE CORNER. I ALSO FOUND SIGNIFICANT (±20 FT.) ERRORS OF CLOSURE IN VOL. 126, PAGE 568 AND VOL. 184, PAGE 244 AND THAT THE SOUTHERLY PORTION OF VOL. 184, PAGE 244 WAS QUALIFIED TO BUT DID NOT FOLLOW THE DEEDED RIGHT OF WAY LINES OF DYKE ROAD. I ALSO FOUND MAJOR DISCREPANCIES IN BEARINGS AND DISTANCES BETWEEN THE DEEDS DESCRIBING DYKE COUNTY ROAD NO. 158C IN VOL. 87, PAGE 49 AND VOL. 108, PAGE 303 AND THE ABOVE LISTED SCHOOL DEEDS AND THE RECORD SURVEYS.

MONUMENTS FOUND AT CORNERS #1, #2, #3 AND #5 CONTROLLED THIS SURVEY. THE SE CORNER OF M23-17 (#16) WAS REESTABLISHED AT DEED (VOL. 126, PAGE 568) BEARING FROM CORNER #1 AND AT DEED DISTANCE FROM CORNER #2. CORNER #4 WAS REESTABLISHED BY PROPORTIONATE MEASUREMENT (COMPASS RULE ADJUSTMENT) BETWEEN CORNER #3 AND CORNER #5. CORNER #6 WAS REESTABLISHED AT M23-17 BEARING AND DISTANCE FROM CORNER #5. CORNER #7, #9, #10, #11, #12, #13, #14 & #15 WERE CONTROLLED BY DYKE ROAD CENTERLINE AS FOLLOWS:

- DYKE ROAD CENTERLINE STATION 0+00 WAS COMPUTED PER M23-17 AND THE 1923 ROAD PLANS FOR ROAD 158C.
- STATION 1+95 (POB OF VOL. 108, PAGE 303) WAS COMPUTED AT RECORD BEARING AND DISTANCE FROM 0+00.
- THE NEXT 3 VOL. 108, PAGE 303 COURSES WERE ROTATED 2° LEFT TO MATCH THE N.22°28'W. TANGENT BEARING BETWEEN CORNER #7 AND CORNER #8 PER M23-17.

CORNER #6, #7, #8, #9, #10, #11 & #12 WERE THEN MONUMENTED 30 FEET RIGHT OF CENTERLINE PER VOL. 108, PAGE 303. CORNERS #13 AND #14 WERE MONUMENTED AT 15 FEET RIGHT OF CENTERLINE PER VOL. 87, PAGE 49, CORNER #15 AND #16 WERE MONUMENTED 20 FEET RIGHT OF CENTERLINE PER M23-17 AND VOL. 94, PAGE 287. THE NEW BOUNDARY LINE WAS THEN ESTABLISHED 1 FOOT NORTH OF THE EXISTING TENNIS COURTS AS DIRECTED BY THE SCHOOL DISTRICT.

THIS SURVEY WAS PERFORMED BY LES FANNING, AARON FANNING, MATT DIXON AND KIRK COPSEY USING SOKKIA SET 2B11 AND SET 5A TOTAL STATIONS WITH COMPUTATIONS BY KRIS DEGROOT AND DRAFTING BY BILL WARREN.

REGISTERED
PROFESSIONAL
LAND SURVEYOR

Kristian O. DeGroot

OREGON
JULY 17, 1981
KRISTIAN O. DEGROOT
1941

EXPIRES: 12-31-95

CURVE	DELTA ANGLE	RADIUS	ARC	TANGENT	CHORD	CHORD BEARING
C 1	1456°29'	1175.92'	306.65'	154.20'	305.78'	S 29°56'14"E
	[1456°02'	1175.92'	306.50'	154.12'	305.63'	S 29°56'01"E]

FD. 5/8" x 1" TRIANGULAR
IRON BAR AND ACCESSORIES
PER PLSS ID. NO. 240200

MAP FILE M122-42