

FD. B. CAP

18 1/2' MADRONA BEARS N 70°E 46 LKS.
42' FIR S 60°E 67 LKS.
34' FIR S 34°W 30 LKS.
32' FIR N 44 1/2°E 91 LKS.
31 1/2' FIR N 44 1/2°W 139 LKS.

FD. B. CAP

A 34' FIR STUMP/SCRIBING BEARS S 25°E 189 LKS.

BASIS OF BEARING PER GLO
S 89°43'00"E 2616.62' (2629.44' PER GLO)
(2617.2' PER BLM ADM. SURV. DATED FEB. 1983)

A SURVEY FOR SILVER BUTTE TIMBER CO. LOCATED IN SECTION 22, T32S, R4W, W.M., DOUGLAS COUNTY, OREGON (WHITEHORSE)

FD. B. CAP

A FIR SNAG (BROKEN) BEARS S 30°E 37.6 FT. (DECOMPOSING)
A 46 1/2' FIR SNAG BEARS N 45°W 45.54 FT.
A 31' CEDAR BEARS S 6°W 53.46 FT.
A 40' CEDAR SNAG BEARS N 20°W 51.48 FT.
A 13' MADRONA BEARS N 32°E 54.78 FT.
FIR SNAG TO SW IS DOWN & MADRONA TO SE IS CUT DOWN (FACE ON STUMP STILL VISIBLE)

FILED

Date: 9-15-95 By: JP
This survey consists of:
Map: M122-46
Narrative:
Corner Rpt:

DOUGLAS COUNTY
SURVEYOR

1" = 400'
JULY 1995

COUNTY SURVEYORS FILE DATA
DO NOT REMOVE FROM OFFICE

LEGEND:

- - FOUND AS NOTED
- - SET 5/8" x 30' IR. w/PLASTIC CAP MARKED "LANG SURVEYING"
- +— - INDICATES APPROX. LOCATION OF METAL POSTS

NARRATIVE:

PURPOSE OF THIS SURVEY WAS TO POST & RIBBON BOUNDARIES IN THE NE 1/4 OF SECTION 22 AS SHOWN. SUBDIVISION OF SECTION PROCEDURES WERE USED. SPECIAL INTEREST: W 1/4 CORNER POSITION DETERMINED BY FD. SCRIBING AT THE BASE OF A STUMP.

FIELD CREW: G. LANG, D. ROGERS & M. BRANSON

NEW CORNER INFORMATION

NOTE: BEARINGS AND DISTANCES TAKEN TO A SPIKE IN THE BOTTOM FACE OF THE TREE.

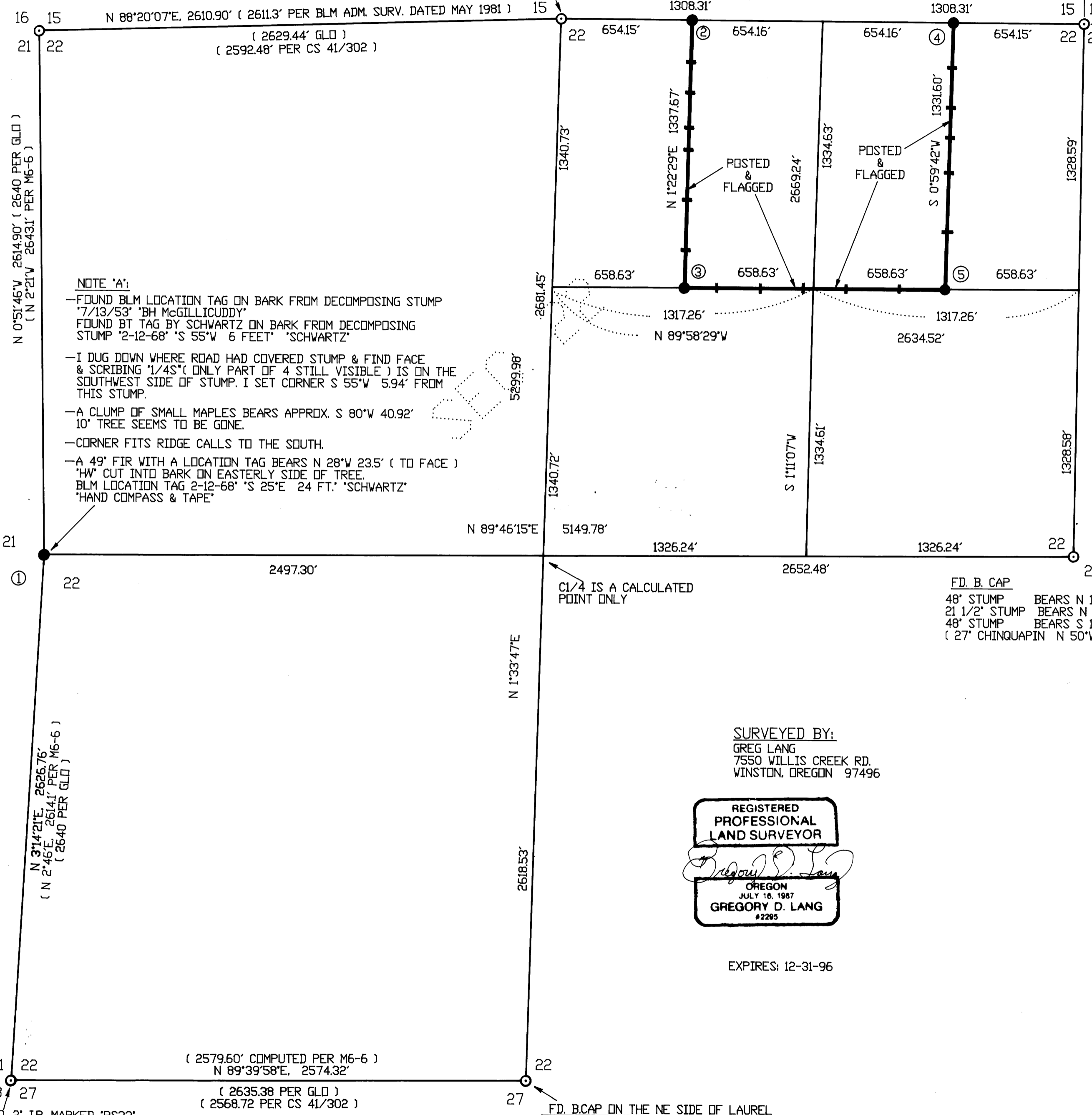
- ① 1/4 SECTION 21122 (SEE NOTE 'A')
8 1/2' FIR BEARS N 84°21'E 37.10' (SCRIBED '1/4 S22"BT')
18' FIR BEARS S 52°18'W 24.68' (SCRIBED '1/4 S21"BT')
6 1/2' FIR BEARS N 15°57'W 14.86' (SCRIBED '1/4 S21"BT')
8 1/2' FIR BEARS S 21°08'E 38.57' (SCRIBED '1/4 S22"BT')
- ② W-E 1/64 CORNER S15 S22
9' FIR BEARS N 46°13'W 30.25' (SCRIBED 'W-E 1/64 S15"BT')
11' FIR BEARS S 25°13'W 69.55' (SCRIBED 'W-E 1/64 S22"BT')
- ③ C-W-NE 1/64 CORNER S22
7 1/2' FIR BEARS N 1°25'W 37.25' (SCRIBED 'C-W-NE 1/64 S22"BT')
18' FIR BEARS S 71°01'W 40.77' (SCRIBED 'C-W-NE 1/64 S22"BT')
- ④ E-E 1/64 CORNER S15 S22
14' FIR BEARS S 3°43'E 34.48' (SCRIBED 'E-E 1/64 S22"BT')
13' FIR BEARS N 64°24'E 42.66' (SCRIBED 'E-E 1/64 S15"BT')
- ⑤ C-E-NE 1/64 CORNER S22
12' FIR BEARS N 48°07'E 20.56' (SCRIBED 'C-E-NE 1/64 S22"BT')
6 1/2' FIR BEARS N 45°05'E 10.28' (SCRIBED 'C-E-NE 1/64 S22"BT')

SURVEYED BY:
GREG LANG
7550 WILLIS CREEK RD.
WINSTON, OREGON 97496

REGISTERED
PROFESSIONAL
LAND SURVEYOR

GREGORY D. LANG
OREGON
JULY 16, 1987
#2295

EXPIRES: 12-31-96



NOTE 'A':

- FOUND BLM LOCATION TAG ON BARK FROM DECOMPOSING STUMP '7/13/53' 'BH McGILLICUDDY'
- FOUND BT TAG BY SCHWARTZ ON BARK FROM DECOMPOSING STUMP '2-12-68' 'S 55°W 6 FEET' 'SCHWARTZ'
- I DUG DOWN WHERE ROAD HAD COVERED STUMP & FIND FACE & SCRIBING '1/4S' (ONLY PART OF 4 STILL VISIBLE) IS ON THE SOUTHWEST SIDE OF STUMP. I SET CORNER S 55°W 5.94' FROM THIS STUMP.
- A CLUMP OF SMALL MAPLES BEARS APPROX. S 80°W 40.92' 10' TREE SEEMS TO BE GONE.
- CORNER FITS RIDGE CALLS TO THE SOUTH.
- A 49' FIR WITH A LOCATION TAG BEARS N 28°W 23.5' (TO FACE) 'HW' CUT INTO BARK ON EASTERLY SIDE OF TREE. BLM LOCATION TAG 2-12-68 'S 25°E 24 FT.' 'SCHWARTZ' 'HAND COMPASS & TAPE'

C1/4 IS A CALCULATED POINT ONLY

FD. B. CAP

48' STUMP BEARS N 15°W 23 LKS. (NOW APPROX. 42')
21 1/2' STUMP BEARS N 69°E 47 LKS.
48' STUMP BEARS S 19°W 44 LKS.
(27' CHINQUAPIN N 50°W 2.5' HAS A LONGVIEW FIBRE TAG)

FD. 2' IP. MARKED 'RS33'

A 34' DIA. FIR STUMP BEARS S 9°W, 26 LKS.
A 48' DOUGLAS FIR BEARS S 30 1/2°E, 99 LKS.

FD. B. CAP ON THE NE SIDE OF LAUREL

FD. 31 1/2' FIR SNAG, BEARS S 29°E, 16 LKS. (RECORD)
(LOCATION TAG SAYS N 30°W, 9.5 FT.)
(MEASURED BEARING S 20°E, 8.6 FT.)

MAP FILE M122-46

MAP FILE M122-46