

FILED

Date: 8/28/95 By: JL
This survey consists of:
Map: M22-38
Narrative:
Corner Rpt:

DOUGLAS COUNTY SURVEYOR

COUNTY SURVEYORS FILE DATA
DO NOT REMOVE FROM OFFICE

NARRATIVE:

TRANSIT: WOLSEY 8351. TAPE: PIONEER 200', 2.5 LBS. FOUND CORNERS ON NORTH LINE OF SECTION 32 DESCRIBED IN INSTRUMENTS M22-77, 88-09602, 88-13549 & M20-9. USED BEARING OF S 89°52'50" E FOUND THEREIN AS BASIS. SET 3 POINTS. SET TRANSIT ON 5/8" IRON ROD AND SIGHTED 1" IRON PIPE AT NORTHEAST CORNER OF LOT 1. SET FIRST POINT ON THIS LINE AND MEASURED DISTANCES. SET SECOND POINT AND MEASURED DISTANCES TO IT FROM FIRST POINT AND FROM 5/8" IRON ROD. TURNED TO RECORD BEARING S 19°35'30" E AND SET THIRD POINT ON THIS LINE. MEASURED DISTANCES FROM SECOND POINT TO THIRD POINT AND FROM 5/8" IRON ROD TO THIRD POINT. CALCULATED BEARINGS OF SET COURSES FROM MEASURED DISTANCES. MEASURED DISTANCES TO 0.01 FEET AND CORRECTED FOR SLOPE, SAG, AND TEMPERATURE.

LEGEND:

- SET 1/2" X 30" STEEL REBAR WITH YELLOW PLASTIC CAP STAMPED "LS 1623".
- FOUND CORNER.
- CORNER NOT FOUND.
- (REC) MEANS BEARING OR DISTANCE IS FROM THE RECORD.
- (REC CALC) MEANS DISTANCE IS CALCULATED FROM RECORD DISTANCES.
- (CALC) MEANS BEARING IS CALCULATED FROM MEASURED DISTANCES. MEANS DISTANCE IS CALCULATED FROM MEASURED AND RECORD DISTANCES ALONG THE SAME LINE.

REGISTERED PROFESSIONAL LAND SURVEYOR

George E. Laney

OREGON JULY 14 1978 GEORGE E. LANEY 1823

EXPIRES 12-31-96

APPROVAL:

Keith L. Cubic
DOUGLAS COUNTY PLANNING DIRECTOR

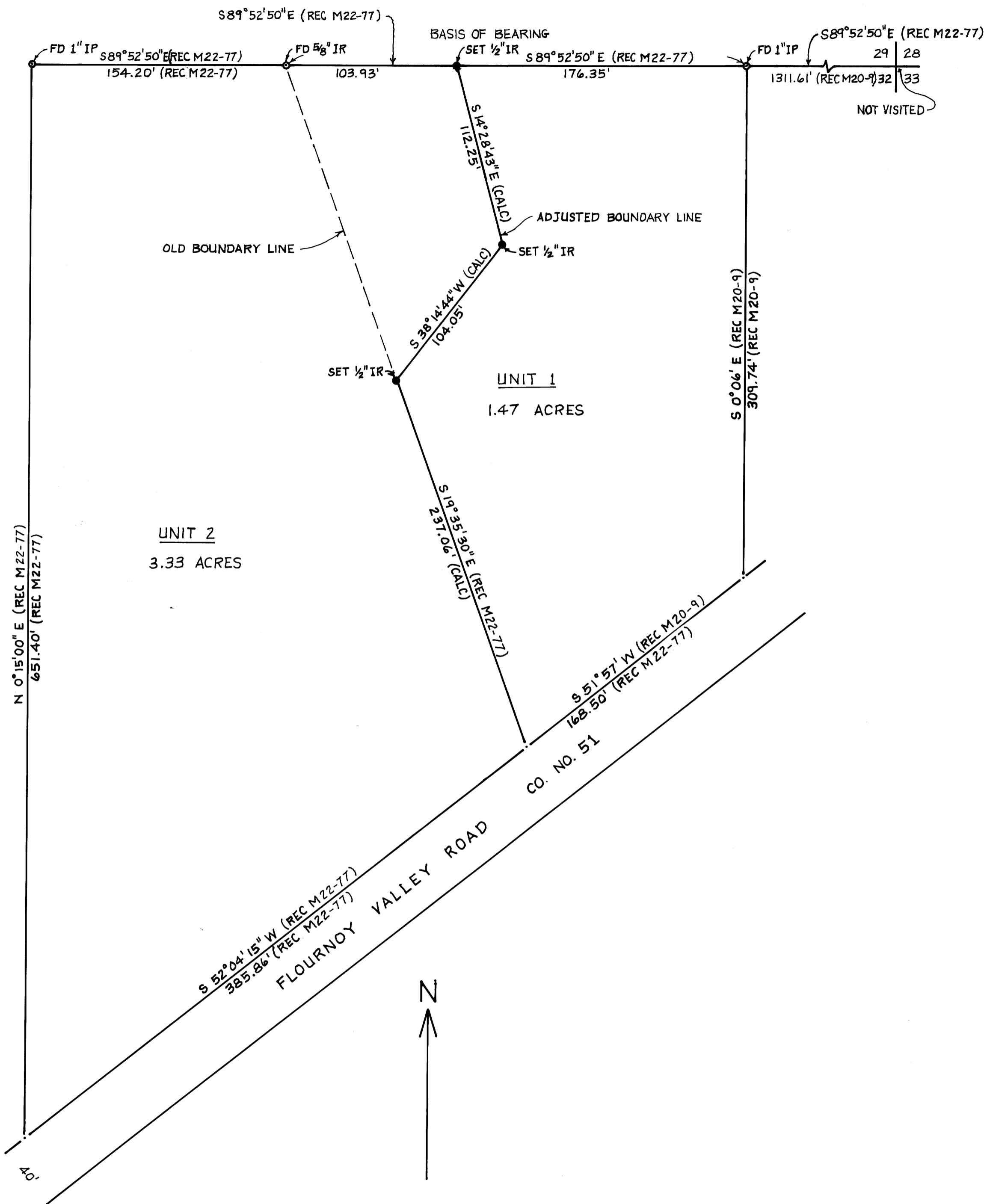
8/28/95
DATE

PLAN. DEPT. FILE NO. 95-232

BOUNDARY LINE ADJUSTMENT FOR

COLLEEN FLUETSCH & TERRY FLUETSCH
6361 FLOURNOY VALLEY ROAD, ROSEBURG, OR 97470
IN LOT 1, NE 1/4, S 32, T 27S, R 7W, WM, DOUGLAS COUNTY, OREGON
SURVEYED AUGUST 1995 BY GEORGE E. LANEY
1621 DENN ROAD, CAMAS VALLEY, OR 97416
SCALE: 1" = 50'

SHEET 1 OF 1



MAP FILE M22-38

MAP FILE M22-38