

LONE ROCK TIMBER CO.

PO BOX 1127 ROSEBURG OREGON 97470 DATE: JULY 1995
 SECTION 20, TOWNSHIP 27 SOUTH, RANGE 1 WEST, W.M. DOUGLAS, OREGON
 WHITE CREEK SURVEY SCALE: 1" = 500'

COUNTY SURVEYORS FILE DATA
DO NOT REMOVE FROM OFFICE

FILED

Date: 8-10-95 By: JC
 This survey consists of:
 Map: M122-27
 Narrative: _____
 Corner Rpt: _____

DOUGLAS COUNTY
 SURVEYOR

MAP FILE M122-27

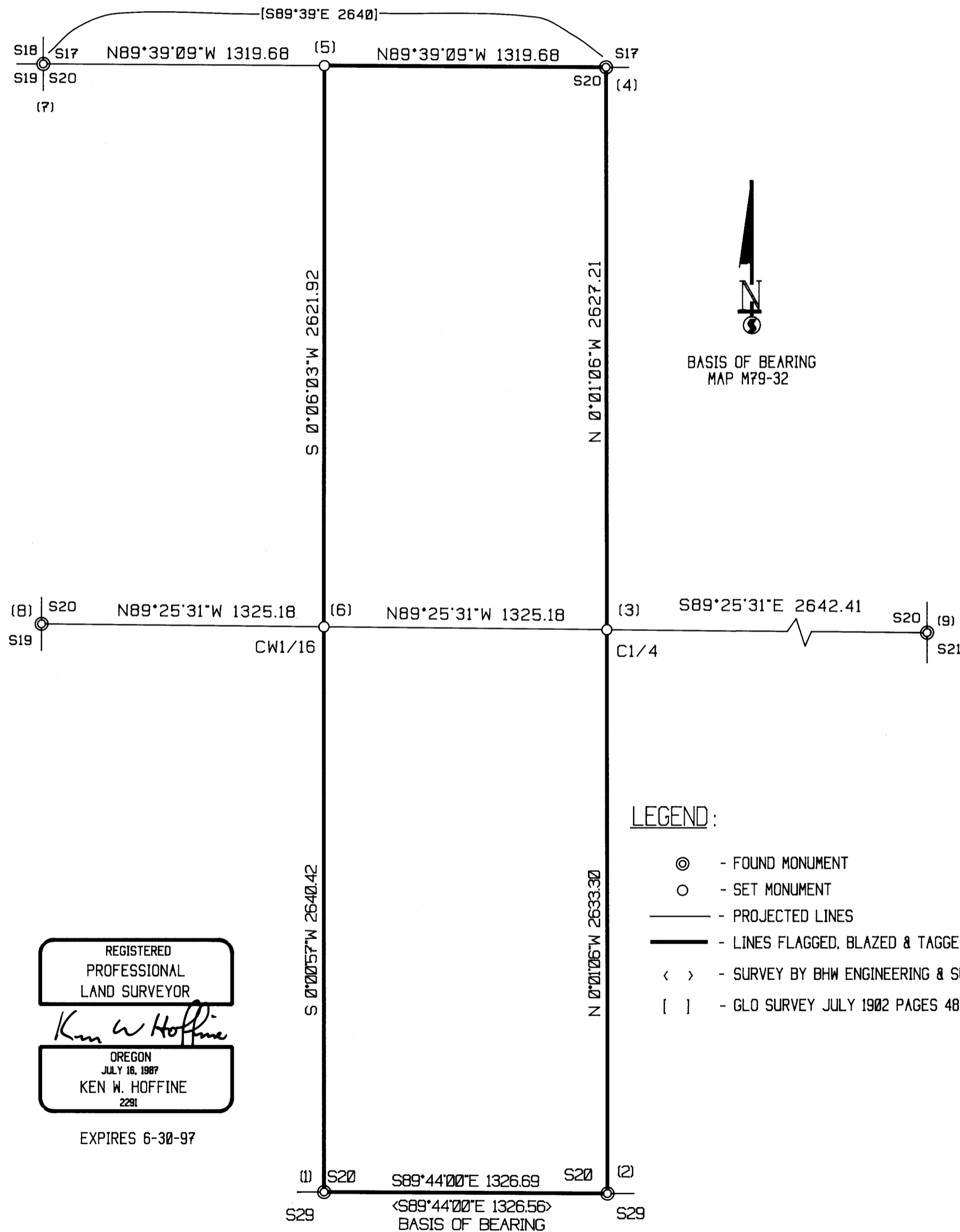
NARRATIVE

THIS SURVEY WAS CONDUCTED TO ESTABLISH PROPERTY CORNERS AND PROPERTY LINES FOR TIMBER CUTTING PURPOSES. WE INITIATED THIS SURVEY AT THE S1/4 OF SECTION 20. A COUNTY BCIP SET FROM ORIGINAL EVIDENCE, TRAVERSING RANDOMLY WESTERLY TO THE W1/16 CORNER BETWEEN SECTIONS 20 AND 29. A BCIP SET BY RON QUIMBY. WE THEN TRAVERSED NORTHERLY NEAR LONE ROCK TIMBER'S WEST PROPERTY LINE TO A POINT NEAR THE WEST 1/16 BETWEEN SECTIONS 20 AND 17. THEN WE TRAVERSED EASTERLY TO THE N1/4 OF SECTION 20. A COUNTY BCIP SET FROM ORIGINAL EVIDENCE. WE CONTINUED OUR TRAVERSE SOUTHERLY THRU THE CENTER OF SECTION 20 TO CLOSE OUR TRAVERSE BACK AT THE SOUTH 1/4. FROM POINTS ON OUR FIRST TRAVERSE WE MADE 3 CLOSED LOOP TRAVERSES TO: W1/4, E1/4 AND NWSE OF SECTION 20. ALL COUNTY BCIP'S SET FROM ORIGINAL EVIDENCE. BASED ON OUR CALCULATIONS FOR THE BREAKDOWN OF SECTION 20 WE SET; THE W1/16 BETWEEN SECTIONS 17 AND 20, THE CW1/16 AND THE C1/4 OF SECTION 20. WE THEN MARKED THE TRUE PROPERTY LINES AS SHOWN. THIS SURVEY WAS DONE WITH A LIETZ SET 2 TOTAL STATION WITH GARY ANGIOLET, JERRY RAGON AND IGNACIO ROMAN ASSISTING ME.

CORNER INFORMATION

THE FOLLOWING IS A RECORD OF ALL CORNERS FOUND OR SET DURING THE COURSE OF THIS SURVEY

- 1) WEST 1/16 CORNER BETWEEN SECTION 20 AND SECTION 29
 FOUND: A BRASS CAP SET BY BHW ENGINEERING AND SURVEYING MAP M79-32.
 -- 13" DOUGLAS FIR BEARS N51 1/2"E, 5.9 FEET (RECORD N51"E, 5.9 FEET) WELL HEALED HIGH FACE AND B.T. TAG
 -- 11" DOUGLAS FIR BEARS S49 3/4"W, 8.6 FEET (RECORD S47"W, 9.2 FEET). WELL HEALED HIGH FACE AND B.T. TAG
 CORNER LIES ON NORTH FACING SLOPE APPROXIMATELY 100 FEET SOUTH OF ROCK ROAD #2792.
- 2) SOUTH 1/4 CORNER SECTION 20
 FOUND: A DOUGLAS COUNTY BRASS CAP 1.3 FEET ABOVE GROUND WITH A 5/8" IRON ROD SOUTH 0.2 FEET.
 -- 36" HEMLOCK SNAG BEARS N59 1/4"E, 25.3 FEET (RECORD N56"E, 25.1 FEET) SCRIBING VISIBLE AND 2 TAGS
 -- 14" DOUGLAS FIR BEARS N36 1/4"W, 39.8 FEET (RECORD N36"W, 40.7 FEET) WELL HEALED FACE AND TAG
 -- ROTTEN STUB BEARS S39 1/4"W, 24.4 FEET (RECORD S40"W, 25.1 FEET) WELL HEALED FACE AND TAG
 CORNER LIES ON FLAT APPROXIMATELY 400 FEET SOUTH OF ROAD.
- 3) CENTER 1/4 CORNER SECTION 20
 SET: A 5/8" X 40" IRON ROD WITH 2" ALUMINUM CAP MARKED LONE ROCK TIMBER T27S RIW C1/4 S20 1995 PLS 2291.
 -- 8" DOUGLAS FIR BEARS S36"W, 22.7 FEET. WE SCRIBE T27S RIW C1/4 S20 B.T. AND TAG TREE
 -- 8" DOUGLAS FIR BEARS N76"W, 23.3 FEET. WE SCRIBE T27S RIW C1/4 S20 B.T. AND TAG TREE
 -- 11" HEMLOCK BEARS S61 3/4"E, 25.6 FEET. WE SCRIBE T27S RIW C1/4 S20 B.T. AND TAG TREE
 -- 9" HEMLOCK BEARS N32"E, 18.9 FEET. WE SCRIBE T27S RIW C1/4 S20 B.T. AND TAG TREE
 CORNER LIES ON GENTLE NORTH SLOPE.
- 4) NORTH 1/4 CORNER OF SECTION 20
 FOUND: A COUNTY BRASS CAP 1.5 FEET ABOVE GROUND.
 -- 12" DOUGLAS FIR BEARS N49"E, 12.0 FEET (RECORD N59"E, 12.2 FEET) WELL HEALED HIGH SCAR AND B.T. TAG
 -- 21" DOUGLAS FIR BEARS S27"W, 38.2 FEET (RECORD S26 1/2"W, 38.7 FEET) WELL HEALED SCAR AND B.T. TAG
 -- 3/4" IRON ROD BEARS N41 1/2"E, 25.3 FEET (RECORD N40"E, 25.0 FEET) PLASTIC SIGN POST BY ROD
 CORNER LIES ON SMALL SPUR RIDGE WITH GROUND SLOPING TO THE NORTHEAST.
- 5) WEST 1/16 CORNER BETWEEN SECTION 17 AND SECTION 20
 SET: 5/8" X 40" IRON ROD WITH 2" ALUMINUM CAP MARKED LONE ROCK TIMBER W1/16 S17 S20 1995 PLS 2291.
 -- 16" DOUGLAS FIR BEARS S54 1/4"W, 23.7 FEET. WE SCRIBE W1/16 S20 B.T. AND TAG TREE
 -- 16" DOUGLAS FIR BEARS N10 1/2"E, 12.8 FEET. WE SCRIBE W1/16 S17 B.T. AND TAG TREE
 CORNER LIES ON 20% NORTHERLY SLOPE APPROXIMATELY 100 FEET SOUTH OF ROCK ROAD.
- 6) CENTERWEST 1/16 CORNER SECTION 20
 SET: 5/8" X 40" IRON ROD WITH 2" ALUMINUM CAP MARKED LONE ROCK TIMBER CW1/16 S20 1995 PLS 2291.
 -- 17" DOUGLAS FIR BEARS N71 1/2"W, 37.3 FEET. WE SCRIBE CW 1/16 S20 B.T. AND TAGGED TREE
 -- 20" DOUGLAS FIR BEARS S53 1/4"E, 31.5 FEET. WE SCRIBE CW 1/16 S20 B.T. AND TAG TREE
 CORNER LIES ON A 35% NORTHEASTERLY SLOPE.
- 7) NORTHWEST SECTION CORNER SECTION 20
 FOUND: 2" COUNTY BRASS CAP 1.5 FEET ABOVE GROUND.
 -- 18" DOUGLAS FIR BEARS S80"E, 30.7 FEET (RECORD S81"E, 30.4 FEET) WELL HEALED FACE AND TAG
 -- 14" DOUGLAS FIR BEARS S61"W, 26.1 FEET (RECORD S58"W, 26.4 FEET) WELL HEALED FACE AND B.T. TAG
 -- 16" DOUGLAS FIR BEARS N30"W, 27.0 FEET (RECORD N32"W, 27.3 FEET) WELL HEALED FACE AND B.T. TAG
 -- 27" 12" TALL CEDAR SNAG BEARS S89"E, 154.8 AS PER RECORD, B.T. TAG
 -- 5/8" IRON ROD BEARS EAST 1.4 FEET
 CORNER LIES ON FLAT APPROXIMATELY 500 FEET WEST OF ROAD.
- 8) WEST 1/4 CORNER SECTION 20
 FOUND: COUNTY BRASS CAP 1.5 FEET ABOVE GROUND.
 -- 36" DOUGLAS FIR STUMP BEARS S40 1/2"E, 17.8 FEET (RECORD S48"E, 17.8 FEET, TAG READS S41"E) CHOPPED
 OUT FACE AND B.T. TAG.
 -- 36" DOUGLAS FIR STUMP BEARS N32"W, 15.0 FEET (RECORD N32"W, 15.0 FEET) PART OF FACE VISIBLE AND B.T. TAG.
 -- 16" HEMLOCK BEARS S39 3/4"W, 56.1 FEET (RECORD S39"W, 55.7 FEET) B.T. TAG
 -- 17" HEMLOCK BEARS S32 1/2"E, 50.9 FEET (RECORD S34"E, 51.5 FEET) WELL HEALED DOUBLE FACE AND B.T. TAG.
 CORNER LIES ON GENTLE NORTHWEST SLOPE.
- 9) EAST 1/4 CORNER SECTION 20
 FOUND: COUNTY BRASS CAP 0.4 FEET ABOVE GROUND.
 -- 11" DOUGLAS FIR BEARS S0 1/4"W, 33.1 FEET (RECORD S1"W, 32.4 FEET) WELL HEALED FACE AND TAG
 -- 18" HEMLOCK BEARS S28 1/4"E, 69.4 FEET (RECORD S28 3/4"E, 69.1 FEET) WELL HEALED AND B.T. TAG
 -- 30" HEMLOCK STUMP BEARS N35 1/4"E, 30.1 FEET (RECORD N35"E, 30.5 FEET) SCAR VISIBLE AND B.T. TAG
 CORNER LIES ON EAST EDGE OF FLAT BENCH IN MOUND OF STONES.



BASIS OF BEARING
 MAP M79-32

LEGEND:

- ⊙ - FOUND MONUMENT
- - SET MONUMENT
- - - - - PROJECTED LINES
- LINES FLAGGED, BLAZED & TAGGED
- < > - SURVEY BY BHW ENGINEERING & SURVEYING MAP M79-32
- [] - GLO SURVEY JULY 1902 PAGES 4847 & 4848

REGISTERED
 PROFESSIONAL
 LAND SURVEYOR
Ken W. Hoffine
 OREGON
 JULY 16, 1987
 KEN W. HOFFINE
 2291
 EXPIRES 6-30-97

MAP FILE M122-27