

MAP FILE M 122-21

COUNTY SURVEYORS FILE DATA  
DO NOT REMOVE FROM OFFICE

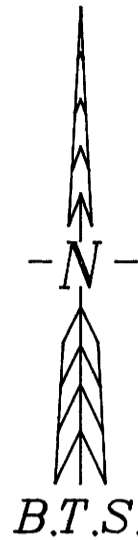
FILED

Date: 7-20-95 By: JP  
This survey consists of:  
Map: M 122-21  
Narrative:  
Corner Rpt:

DOUGLAS COUNTY SURVEYOR JP

LEGEND:

- - FOUND 1" IRON PIPE PER SUKSDORF'S WINSTON HEIGHTS (VOL. 8, PG. 48)
- - FOUND 5/8" IRON ROD PER CS 51/347-1
- ⊙ - FOUND MONUMENT AS NOTED PER M 46-4
- ⊙ - FOUND MONUMENT AS NOTED PER M 73-46
- ⊙ - SET 5/8" x 30" IRON ROD WITH PLASTIC CAP MK'D "BTS ENG-SURV"
- ▲ - COMPUTED POINT
- ( ) - RECORD CALLS PER JORGEN'S SUBDIVISION, VOLUME 6, PAGE 60
- < > - RECORD CALLS PER M 46-4
- [ ] - RECORD CALLS PER M 73-46
- (( )) - RECORD CALLS PER CS 51/347-1



RECORD OF SURVEY

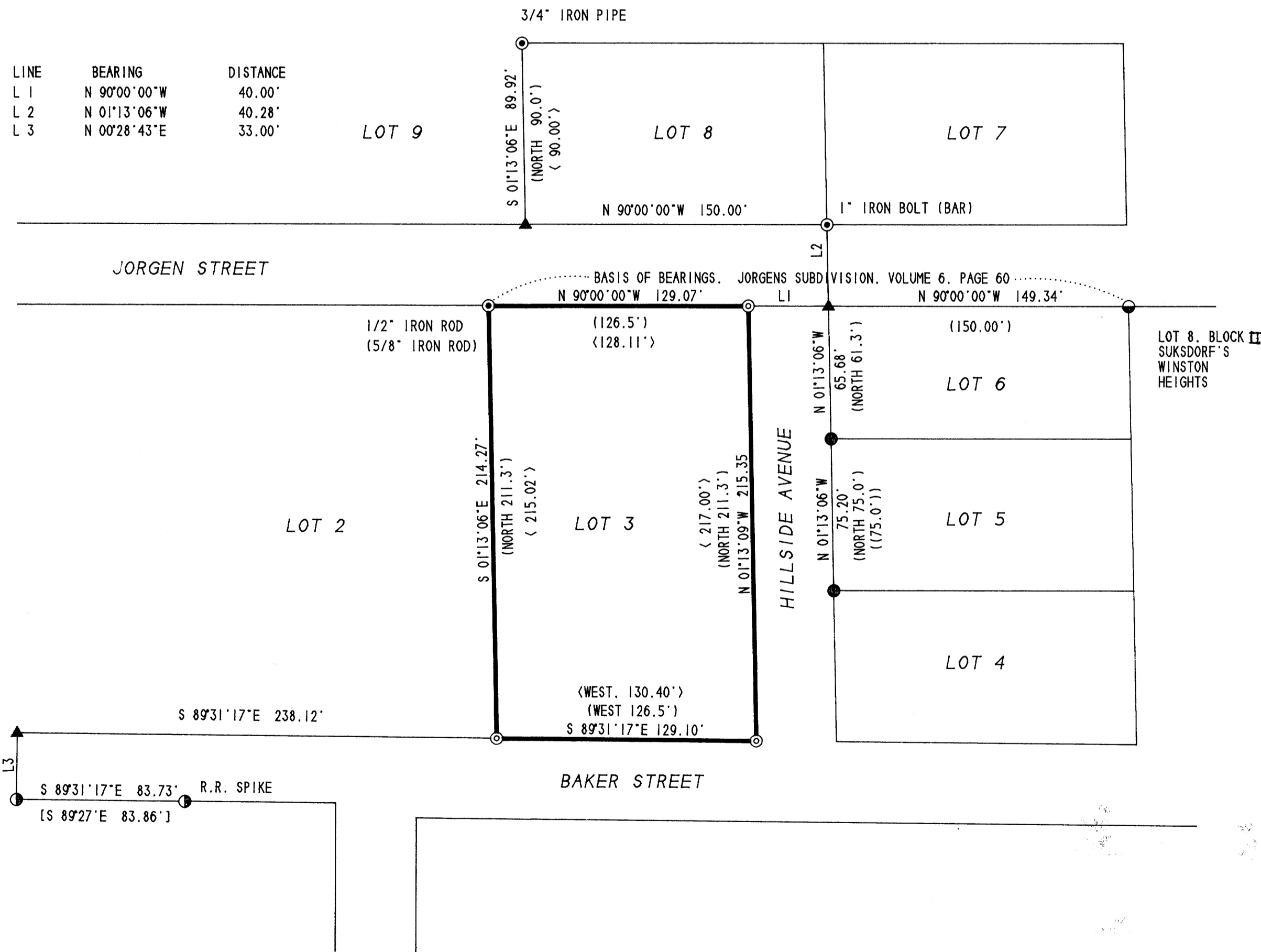
LOCATED IN JORGEN'S SUBDIVISION  
IN THE NW 1/4, NE 1/4 OF SECTION 21  
T. 28 S. R. 6 W. W.M.

SCALE 1" = 50'

JUNE, 1995

SURVEYED FOR:  
JOHN A. JAMES  
344 HOOTEN ROAD  
WINSTON, OR 97496

SURVEYED BY:  
BTS ENGINEERING & SURVEYING, INC.  
431 S.E. MAIN STREET  
ROSEBURG, OR 97470  
(503) 673-0966 FAX (503) 673-0105



NARRATIVE:

THE PURPOSE OF THIS SURVEY WAS TO MONUMENT LOT 3, JORGEN'S SUBDIVISION. THE NW CORNER OF LOT 3 AS REESTABLISHED IN M 46-4 AND THE NW CORNER OF LOT 8, BLOCK II OF SUKSDORF'S WINSTON HEIGHTS CONTROLLED THE NORTH LINE OF LOT 3. THE SE CORNER OF LOT 8 PER M 46-4 AND THE NW & SW CORNER OF LOT 5 PER CS 51/347-1 CONTROLLED THE EAST LINE OF HILLSIDE AVENUE. THE EAST LINE OF LOT 3 WAS MONUMENTED 40 FEET WESTERLY AND PARALLEL TO THE EAST LINE OF HILLSIDE AVENUE. MONUMENT PER M 73-46 CONTROLLED THE SOUTH LINE OF BAKER STREET. THE SOUTH LINE OF LOT 3 WAS MONUMENTED 33 FEET NORTHERLY OF AND PARALLEL TO THE SOUTH LINE OF BAKER STREET. THE WEST LINE OF LOT 3 WAS ESTABLISHED PARALLEL TO THE EAST LINE OF LOT 3 FROM THE FOUND NW CORNER. THERE WERE SIGNIFICANT DISCREPANCIES FOUND BETWEEN MEASURED AND PLAT RECORD COURSES ON THIS SURVEY WHICH WERE SIMILAR TO THOSE RETURNED IN M 46-4.

THIS SURVEY WAS PERFORMED BY LES FANNING AND MATT DIXON USING A SOKKIA SET 2B11 TOTAL STATION WITH COMPUTATIONS AND DRAFTING BY KRIS DEGROOT.

REGISTERED PROFESSIONAL LAND SURVEYOR

*Kristian O. DeGroot*

OREGON  
JULY 17, 1981  
KRISTIAN O. DEGROOT  
1941

EXPIRES 12/31/95

MAP FILE M 122-21