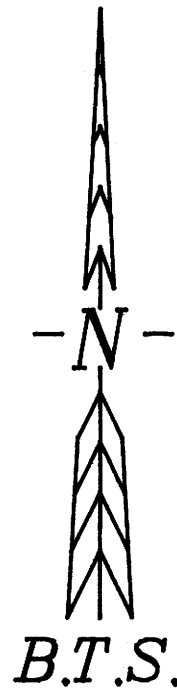


FILED

Date: 6/29/95 By: JC  
This survey consists of:  
Map: M 122-18  
Narrative: \_\_\_\_\_  
Corner Rpt: \_\_\_\_\_

DOUGLAS COUNTY SURVEYOR



**RECORD OF SURVEY**  
**LOCATED IN**  
**UNION HEIGHTS HOMESITES & UNION GAP HOMESITES**  
**SE 1/4, SECTION 8, T.25S., R.5W., W.M.**  
**SCALE: 1" = 100'**  
**MAY, 1995**

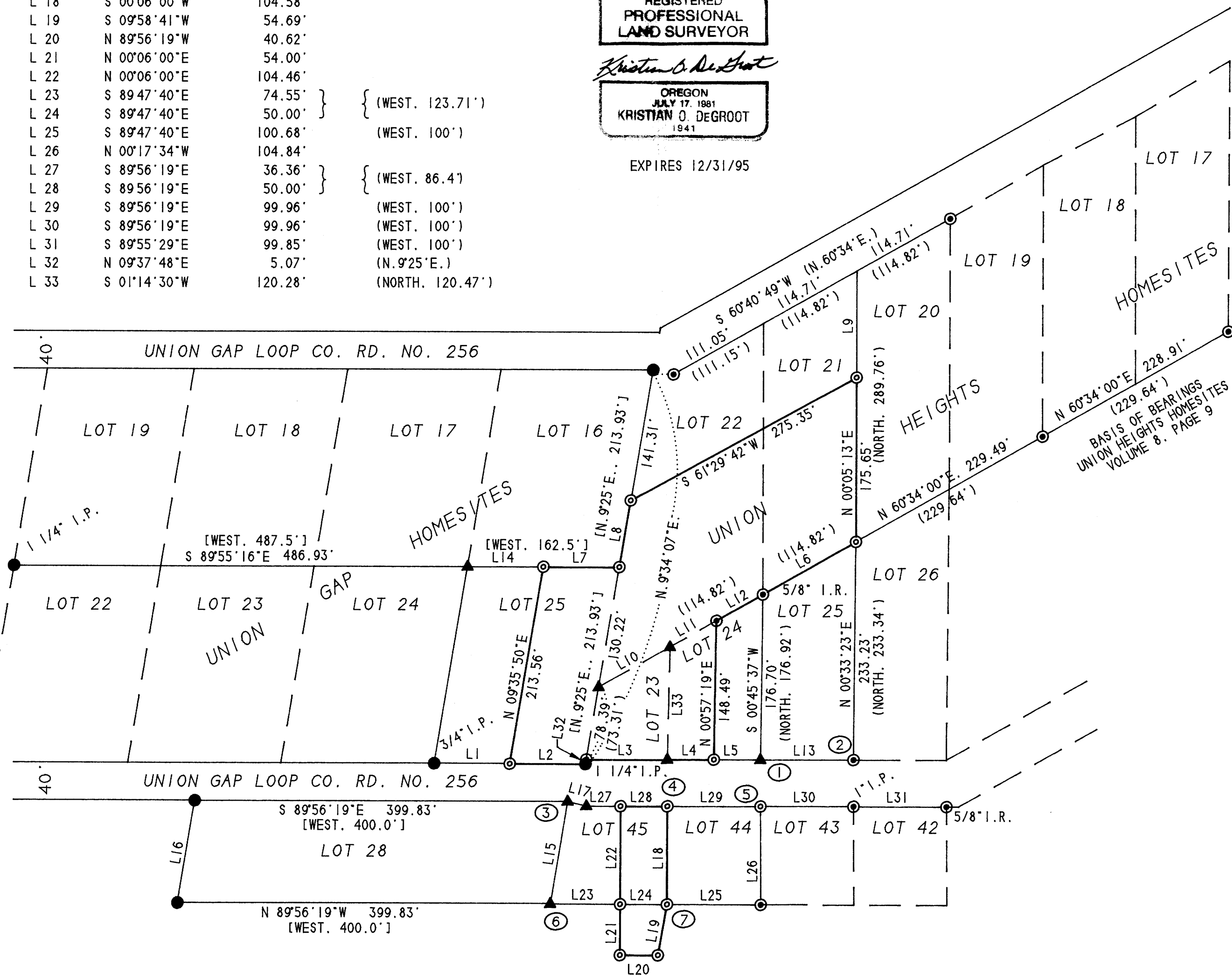
SURVEYED BY:  
BTS ENGINEERING & SURVEYING INC.  
431 S.E. MAIN STREET  
ROSEBURG, OR 97470

SURVEYED FOR:  
STEVE & BARBARA SMITH  
276 UNION GAP LOOP ROAD  
OAKLAND, OR 97462

LINE	BEARING	DISTANCE	RECORD
L 1	S 89°50'55"E	81.01'	{ [WEST. 162.5]
L 2	S 89°50'55"E	81.01'	{ <S. 89°59'23"E.. 161.96'
L 3	S 89°54'51"E	86.41'	(WEST. 86.40')
L 4	S 89°54'51"E	50.01'	{ (WEST. 100')
L 5	S 89°54'51"E	50.01'	{ (WEST. 100')
L 6	N 60°34'00"E	114.75'	
L 7	S 89°55'16"E	81.16'	
L 8	N 09°37'48"E	72.38'	
L 9	N 00°05'13"E	113.69'	
L 10	N 60°34'00"E	87.16'	
L 11	N 60°34'00"E	57.27'	
L 12	N 60°34'00"E	57.27'	
L 13	S 89°54'51"E	100.02'	(WEST. 100')
L 14	S 89°55'16"E	81.16'	
L 15	S 09°33'03"W	110.79'	
L 16	N 09°33'03"E	110.79'	
L 17	S 75°54'00"E	20.60'	(S. 76°E.)
L 18	S 00°06'00"W	104.58'	
L 19	S 09°58'41"W	54.69'	
L 20	N 89°56'19"W	40.62'	
L 21	N 00°06'00"E	54.00'	
L 22	N 00°06'00"E	104.46'	
L 23	S 89°47'40"E	74.55'	{ (WEST. 123.71')
L 24	S 89°47'40"E	50.00'	{ (WEST. 100')
L 25	S 89°47'40"E	100.68'	{ (WEST. 100')
L 26	N 00°17'34"W	104.84'	
L 27	S 89°56'19"E	36.36'	{ (WEST. 86.4)
L 28	S 89°56'19"E	50.00'	{ (WEST. 100')
L 29	S 89°56'19"E	99.96'	{ (WEST. 100')
L 30	S 89°56'19"E	99.96'	{ (WEST. 100')
L 31	S 89°55'29"E	99.85'	{ (WEST. 100')
L 32	N 09°37'48"E	5.07'	(N. 9°25'E.)
L 33	S 01°14'30"W	120.28'	(NORTH. 120.47')

REGISTERED PROFESSIONAL LAND SURVEYOR  
*Kristian O. Degroot*  
OREGON JULY 17, 1981  
KRISTIAN O. DEGROOT 1941

EXPIRES 12/31/95



**NARRATIVE**

THE PURPOSE OF THIS SURVEY WAS TO MONUMENT THE CORNERS OF THE SMITH PROPERTY AS DESCRIBED IN INST. NO. 84-5074, INST. NO. 89-07999, INST. NO. 90-00141 AND INST. NO. 94-15887 OF THE RECORDS OF DOUGLAS COUNTY, OREGON. ORIGINAL MONUMENTS FOUND PER UNION GAP HOMESITES AND UNION HEIGHTS HOMESITES CONTROLLED THIS SURVEY. UNION GAP HOMESITES (VOL. 7, PAGE 31) MONUMENTS FOUND WERE THE NE CORNER OF LOT 16, SW CORNER OF LOT 19, SE AND SW CORNERS OF LOT 25, AND THE NW AND SW CORNERS OF LOT 28. UNION HEIGHTS HOMESITES (VOL. 8, PAGE 9) MONUMENTS FOUND WERE THE SE CORNER OF LOT 17, THE SE AND NW CORNERS OF LOT 19, THE SE CORNER AND ANGLE POINT IN THE NORTH LINE OF LOT 22, THE SE CORNER OF LOT 25, AND THE NE AND SW CORNERS OF LOT 43. THE SPATIAL RELATIONSHIP BETWEEN THESE CORNERS CLOSELY MATCHED PLAT RECORD BEARINGS AND DISTANCES. ALL COMPUTED AND MONUMENTED CORNERS WERE PROPORTIONED BETWEEN THESE FOUND CORNERS. MANY NON-RECORD MONUMENTS WERE FOUND AS LISTED ON THE FACE OF THIS PLAT WHICH WERE NOT ACCEPTED AS CONTROLLING CORNERS. THIS SURVEY RETURNED A DISTANCE OF 78.39 FEET ALONG THE WEST LINE OF LOT 23. UNION HEIGHTS HOMESITES, RECORD DISTANCE FOR THIS LINE WAS 73.41 FEET AND LOT 23 DID NOT CLOSE BY APPROXIMATELY 5 FEET. I CONCLUDED THAT THE PLAT WAS IN ERROR AND SHOULD HAVE LISTED A DISTANCE OF 78.41 FEET ALONG THE WEST LINE OF LOT 23. THIS SURVEY WAS PERFORMED BY LES FANNING AND MATT DIXON USING A SOKKIA SET2B11 TOTAL STATION WITH COMPUTATIONS AND DRAFTING BY KRIS DEGROOT.

**LEGEND**

- - FOUND 1/2" IRON PIPE AS NOTED PER UNION GAP HOMESITES (VOL. 7, PG. 31)
- ⊙ - FOUND 1/2" IRON ROD OR AS NOTED PER UNION HEIGHTS HOMESITES (VOL. 8, PG. 9)
- ⊙ - SET 5/8" X 30" IRON ROD WITH PLASTIC CAP "BTS ENG-SURV"
- ▲ - POINT COMPUTED, NOT SET
- ( ) - RECORD CALLS PER UNION HEIGHTS HOMESITES (VOL. 8, PG. 9)
- [ ] - RECORD CALLS PER UNION GAP HOMESITES (VOL. 7, PG. 31)
- < > - RECORD CALLS PER M 106-34

**CORNER NOTES**

- ① 1/2" IRON PIPE FALLS S. 14°30'54"E.. 6.11'
- ② 1 1/4" IRON PIPE FALLS S. 12°05'34"W.. 5.57'
- ③ 3/4" IRON PIPE FALLS S. 74°19'42"E.. 4.17'
- ④ 1" IRON ROD FALLS S. 23°32'00"E.. 2.52'
- ⑤ 5/8" IRON ROD FALLS N. 9°15'11"E.. 4.74'
- ⑥ 1 1/4" IRON PIPE FALLS S. 73°21'02"E.. 3.20'
- ⑦ 5/8" IRON ROD FALLS S. 18°39'35"E.. 1.97'

COUNTY SURVEYORS FILE DAY  
DO NOT REMOVE FROM OFFICE

MAP FILE M 122-18

MAP FILE M 122-18