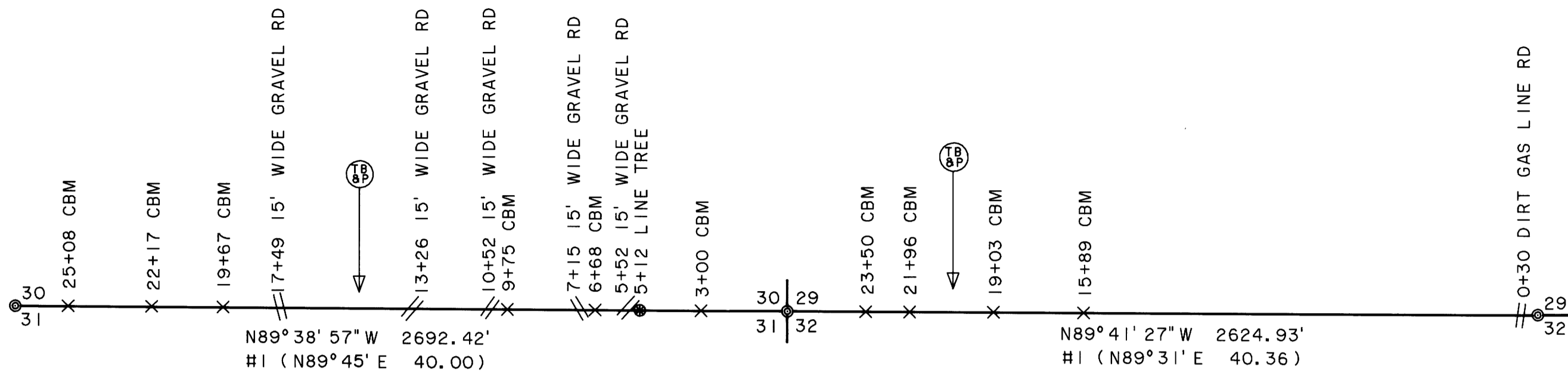


MAP FILE M122-17



SURVEY BY:
 REGISTERED PROFESSIONAL LAND SURVEYOR
Lloyd D. Smith
 OREGON JULY 22, 1977
 LLOYD D. SMITH
 1101
 LLOYD D. SMITH
 300 5TH ST. BAY PARK
 COOS BAY, OREGON
 EXPIRATION DATE OF CERTIFICATE 12-31-96

FILED
 Date: 6-27-95 By: JP
 This survey consists of:
 Map: M122-17
 Narrative: _____
 Corner Rpt: _____
 J^c DOUGLAS COUNTY, OREGON
 SURVEYOR

1/4 CORNER FOUND
 OSBF P/C, 1963 (IN PLACE)
 20" FIR, (1882) N70°E 28 LKS
 (NOW 42" ROTTED STUMP, IN PLACE)
 24" FIR, (1882) S35°W 9 LKS (NOW
 36" ROTTED UPROOT STUMP)
 23" HEMLOCK, (1963) S26°W 25.8'
 (NOW 23" X 3' HIGH ROTTED STUMP
 IN PLACE, SCRIBES BT VISIBLE)
 23" CEDAR, (1963) N24°E 28.1'
 (NOW 34" X 2' HIGH STUMP IN
 PLACE, SCRIBE O VISIBLE)
 WPCP, (1963) NORTH 3.0' (IN
 PLACE)
 15" HEMLOCK, (1966) S21°W 31.3'
 (NOW 22" IN PLACE, FACE CLOSED)
 14" HEMLOCK, (1966) N29°W 61.9'
 (NOW 24" X 1' HIGH STUMP IN
 PLACE, FACE EXPOSED WITH AXE
 WORK VISIBLE)
 LOGGING ROAD WEST 160.0' WITH
 LOCATION TAG (IN PLACE)
 REWITNESSED
 WP N51°W 2.80' TO BASE
 WP S88°E 3.30' TO BASE

SECTION CORNER FOUND
 OSBF P/C, 1963 (IN PLACE)
 32" FIR, (1882) S45°W 65 LKS (NOW 48" X 3'
 HIGH STUMP S40°W 64.0' BARK SCRIBES VISIBLE,
 MOVED DURING ROAD CONSTRUCTION)
 12" FIR, (1959) N89°E 93.3' (NOW FIND THE SAME
 AS 1983 BLM REPORT)
 18" FIR, (1959) S10°E 68.4' (NOW FIND THE SAME
 AS 1983 BLM REPORT)
 26" FIR, (1963) N12°E 12.0' (NOW 30" X 3' HIGH
 ROTTED STUMP IN PLACE, ALL SCRIBES VISIBLE)
 YMLP
 22" FIR, (1963) S74°E 180.0' (NOW FIND THE
 SAME AS 1983 BLM REPORT)
 26" FIR, (1963) S13°W 59.6' (NOW 28" X 3 1/2'
 HIGH STUMP IN PLACE, ALL SCRIBES VISIBLE)
 4" CHINQUAPIN, (1966) N79°E 23.7' (NOW 10"
 FACE PARICALY OPEN AND ROTTED INSIDE IN PLACE,
 NO SCRIBES VISIBLE) BTT
 5" FIR, (1966) S8°E 82.4' (NOW 17" IN PLACE,
 FACE CLOSED) BTT
 5" FIR, (1966) S80°W 70.2' (NOW 17" IN PLACE,
 FACE CLOSED) BTT
 8" FIR, (1983) N21 1/2°W 11 1/2 LKS (NOW 10"
 IN PLACE, FACE CLOSED) BTT
 GRAVEL ROAD SOUTH 33.0', CRS EAST 16.5' WIDE
 (IN PLACE)
 WPCP, (1963) S.E. 1.0' (NOW N7°W 1.3')

1/4 CORNER FOUND
 1" IRON PIN (1950) FLUSH WITH
 GROUND AT LOCATION OF CEDAR
 POST (IN PLACE)
 1 1/2" IRON PIN, (1950) 9"
 ABOVE GROUND ALONGSIDE 1" PIN
 (IN PLACE)
 24" FIR, (1882) S6°W 24 LKS
 (NOW BADLY ROTTED STUMP IN
 PLACE)
 24" FIR, (1882) N5°W 53 LKS
 (MISSING)
 3" FIR, (1966) N78°W 11.7' (NOW
 10" IN PLACE, FACE CLOSED) BTT
 3" FIR, (1966) S21°W 20.2' (NOW
 9" IN PLACE, FACE CLOSED)
 POWER LINE ROAD EAST 100.0' (IN
 PLACE)
 GAS LINE ROAD WEST 30.0' (IN
 PLACE)
 REWITNESSED
 WP N7°W 3.0' TO BASE
 WP S4°E 4.30' TO BASE

SURVEY FOR:
 STATE OF OREGON - DEPARTMENT OF FORESTRY
 SECTIONS 31 & 32, T.31S., R.5W., W.M.
 DOUGLAS COUNTY, OREGON
 THEODOLITE AND EDM SURVEY BY:
 LLOYD D. SMITH AND TIM VAN VLEET
 DRAWN BY: TIM VAN VLEET
 MAY 30, 1995
 SCALE 1" = 400'

SURVEY NARRATIVE TO COMPLY WITH PARAGRAPH 209.250 OREGON REVISED STATUTES



BASIS OF BEARING

SOLAR OBSERVATION, ALTITUDE METHOD

PURPOSE

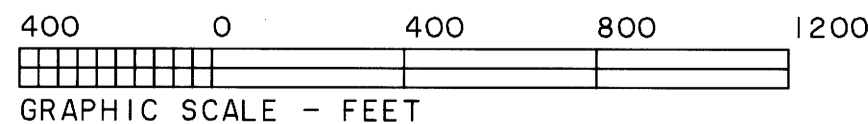
TO SEPARATE STATE FOREST LANDS AND PRIVATE LANDS LOCATED IN SECTIONS 31 AND 32, TOWNSHIP 31 SOUTH, RANGE 5 WEST, WILLAMETTE MERIDIAN.

PROCEDURE

A RANDOM TRAVERSE WAS RUN BETWEEN FOUND CORNERS. BEARINGS AND DISTANCE WERE COMPUTED AND OFFSETS CALCULATED TO POINTS ON TRUE LINE FOR CARSONITE BOUNDARY MARKERS. BEARINGS TO ACCESSORIES FOR REWITNESSED CORNERS WERE TAKEN WITH A HAND COMPASS SET AT 19°30' EAST MAGNETIC DECLINATION. FOR A DETAILED REPORT ON FOUND CORNERS SEE COUNTY RECORDS.

LEGEND

- OSBF P/C = OREGON STATE BOARD OF FORESTRY 1 1/2" X 36" GALVANIZED IRON PIPE WITH 3" BRONZE CAP
- X = ORANGE CARSONITE MARKER AND STATION, CBM-250R LABELED BOUNDARY MARKER
- ⊕ → = TRUE BLAZED AND POSTED
- ⊙ = FOUND CORNER
- BT = BEARING TREE
- WP = ORANGE CARSONITE MARKER, CBM-250R LABELED WITNESS POST
- BTT = BEARING TREE TAG
- CRS = COURSE
- WPCP = 4" X 4" X 72" WHITE PAINTED CEDAR POST
- YMLP = YELLOW METAL LOCATION POSTER
- #1 () = RECORD BEARING AND DISTANCE IN CHAINS W.H. BYARS, 1882, CONTRACT NO. 456



ODF PLAT NO. 378

DO NOT REMOVE FROM OFFICE

MAP FILE M122-17