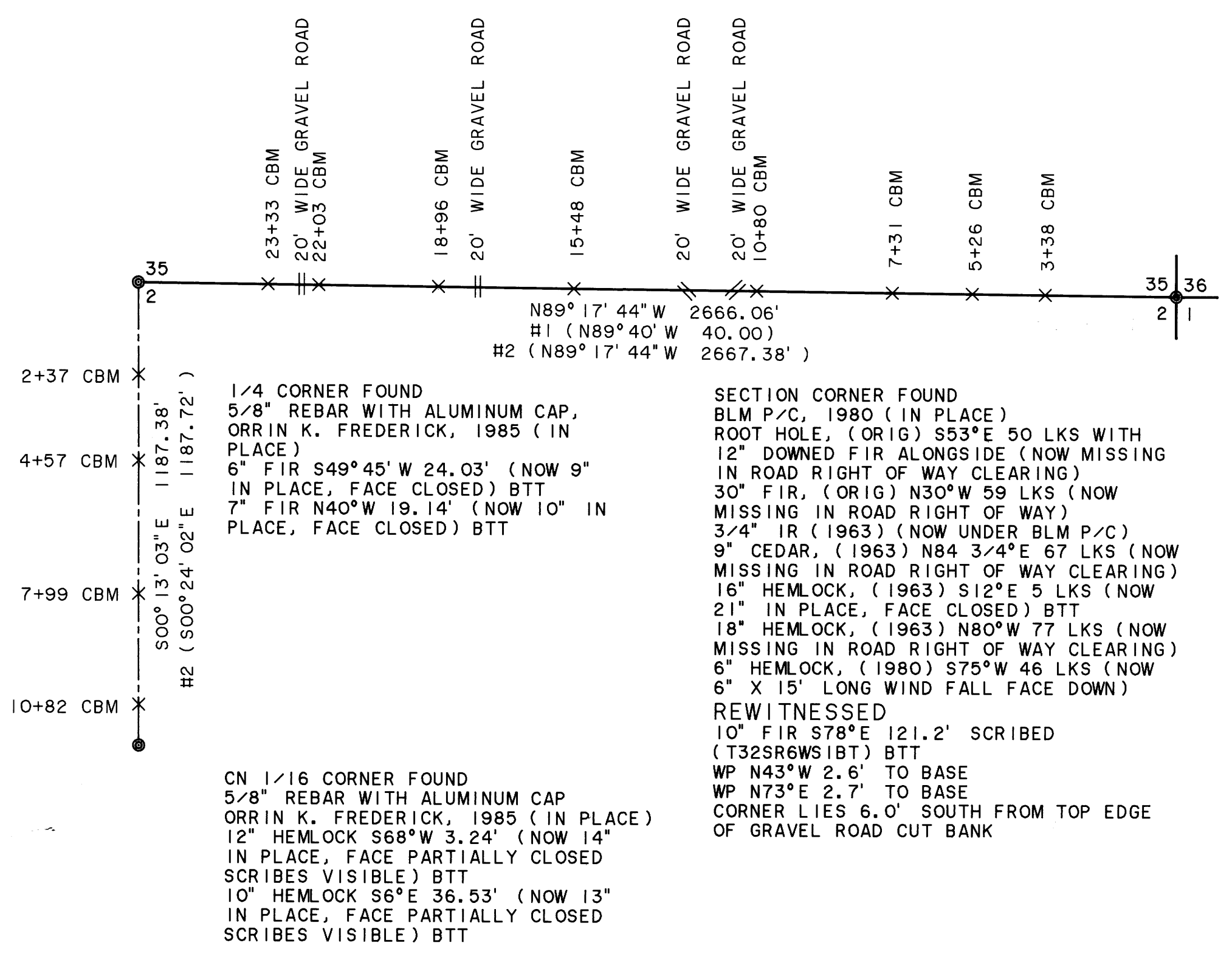


SURVEY BY:
 REGISTERED PROFESSIONAL LAND SURVEYOR
Lloyd D. Smith
 OREGON
 JULY 22, 1977
 LLOYD D. SMITH
 1101

FILED
 Date: 6-26-95 By: JP
 This survey consists of:
 Map: M122-15
 Narrative: _____
 Corner Rpt: _____
 DOUGLAS COUNTY SURVEYOR

LLOYD D. SMITH
 300 5TH ST. BAY PARK
 COOS BAY, OREGON

EXPIRATION DATE OF CERTIFICATE 12-31-96



SURVEY NARRATIVE TO COMPLY WITH PARAGRAPH 209.250 OREGON REVISED STATUTES

LEGEND

- BLM P/C = BUREAU OF LAND MANAGEMENT 2 1/2" X 28" IRON PIPE WITH BRASS CAP
- X = ORANGE CARSONITE MARKER AND STATION, CBM-250R LABELED BOUNDARY MARKER
- (TB) → = TRUE BLAZED AND POSTED
- ⊙ = FOUND CORNER
- BT = BEARING TREE
- WP = ORANGE CARSONITE MARKER, CBM-250R LABELED WITNESS POST
- BTT = BEARING TREE TAG
- IR = IRON ROD
- H1 () = RECORD BEARING AND DISTANCE IN CHAINS
 GEORGE HYDE, 1855, CONTRACT NO. 54
- H2 () = RECORD BEARING AND DISTANCE IN FEET
 ORRIN K. FREDERICK, 1985
- 1963 = JAMES W. BYRON, DEPUTY COUNTY SURVEYOR
- 1980 = BUREAU OF LAND MANAGEMENT

PURPOSE

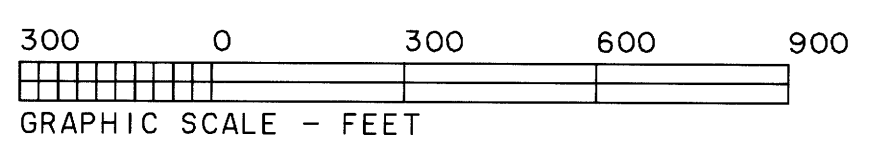
TO SEPARATE STATE FOREST LANDS AND PRIVATE LANDS LOCATED IN SECTION 2, TOWNSHIP 32 SOUTH, RANGE 6 WEST, WILLAMETTE MERIDIAN.

PROCEDURE

A RANDOM TRAVERSE WAS RAN BETWEEN FOUND CORNERS. BEARINGS AND DISTANCES WERE COMPUTED AND OFFSETS CALCULATED TO POINTS ON TRUE LINE FOR CARSONITE BOUNDARY MARKERS. NEW ACCESSORIES WERE MARKED ACCORDING TO THE "MANUAL OF INSTRUCTION FOR THE SURVEY OF THE PUBLIC LANDS OF THE U.S.". BEARINGS TO ACCESSORIES FOR REWITNESSED CORNERS WERE TAKEN WITH A HAND COMPASS SET AT 19° 30' EAST MAGNETIC DECLINATION. DISTANCE MEASURED TO ALUMINUM NAIL IN BT FACE. ALL ROADS AT APPROXIMATE LOCATIONS UNLESS OTHER WISE INDICATED. FOR A DETAILED REPORT ON FOUND CORNERS SEE COUNTY RECORDS.

BASIS OF BEARING

ORRIN K. FREDERICK 1985, SURVEY FROM THE SECTION CORNER OF SECTIONS 35, 36, 1 AND 2 TO THE ONE QUARTER CORNER OF SECTION 35 AND 2, TOWNSHIP 31 AND 32 SOUTH, RANGE 6 WEST, WILLAMETTE MERIDIAN.



COUNTY SURVEYORS FILE DATA
 DO NOT REMOVE FROM OFFICE