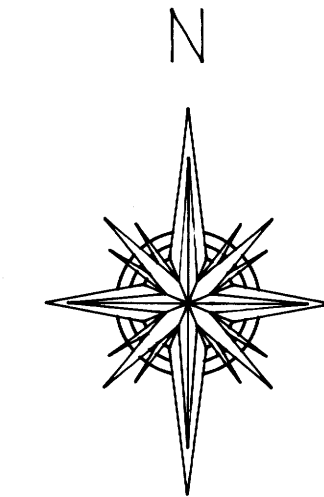


# PROPERTY SURVEY FOR I.P. TIMBERLANDS OPERATING CO., LTD.

LOCATED IN: SECTION 6, T. 21 S., R. 11 W., WM.  
LEITEL-JOYCE WEST PROJECT NO. SA 94-67

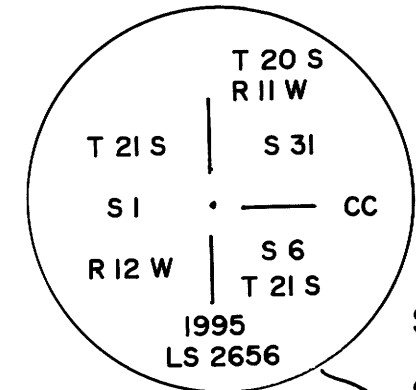
COUNTY SURVEYORS FILE DATA  
DO NOT REMOVE FROM OFFICE



FILED  
Date: 4/19/95 By: BC  
This survey consists of:  
Map: M 121-68  
Narrative:  
Corner Rpt:

DOUGLAS COUNTY  
SURVEYOR

SCALE 1" = 400'  
FEBRUARY 1995

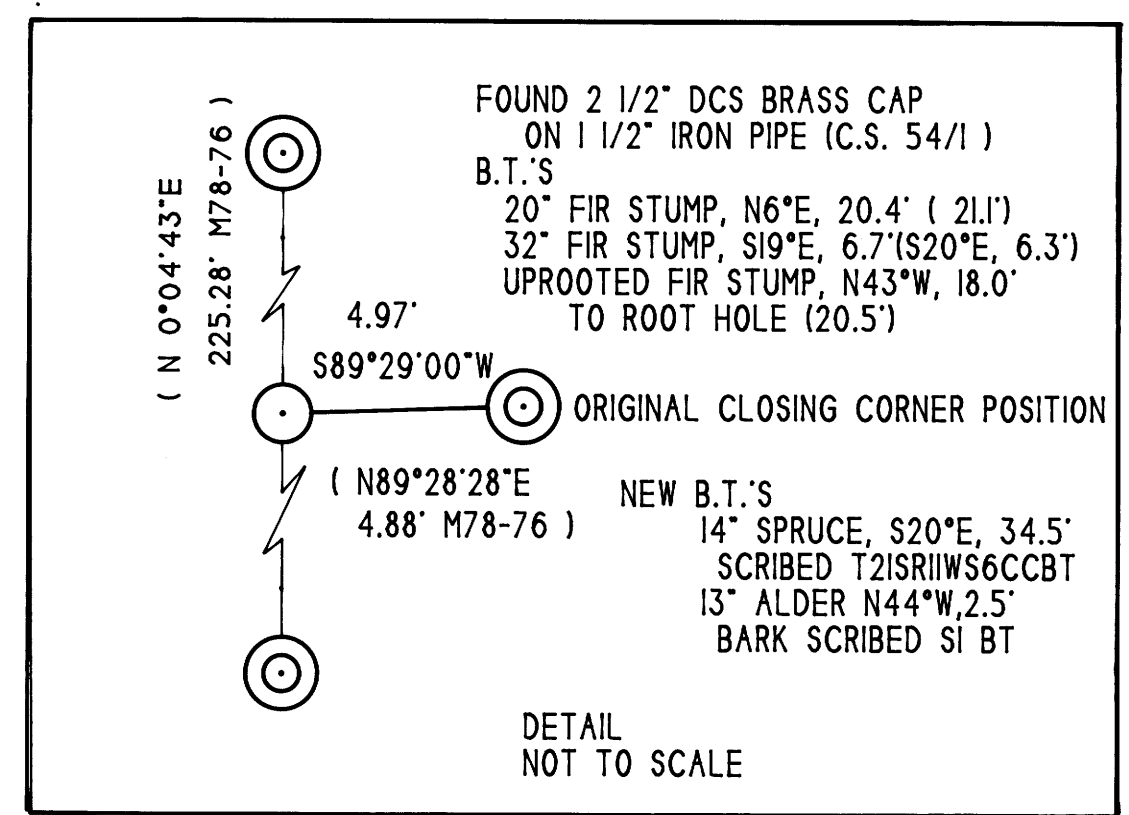
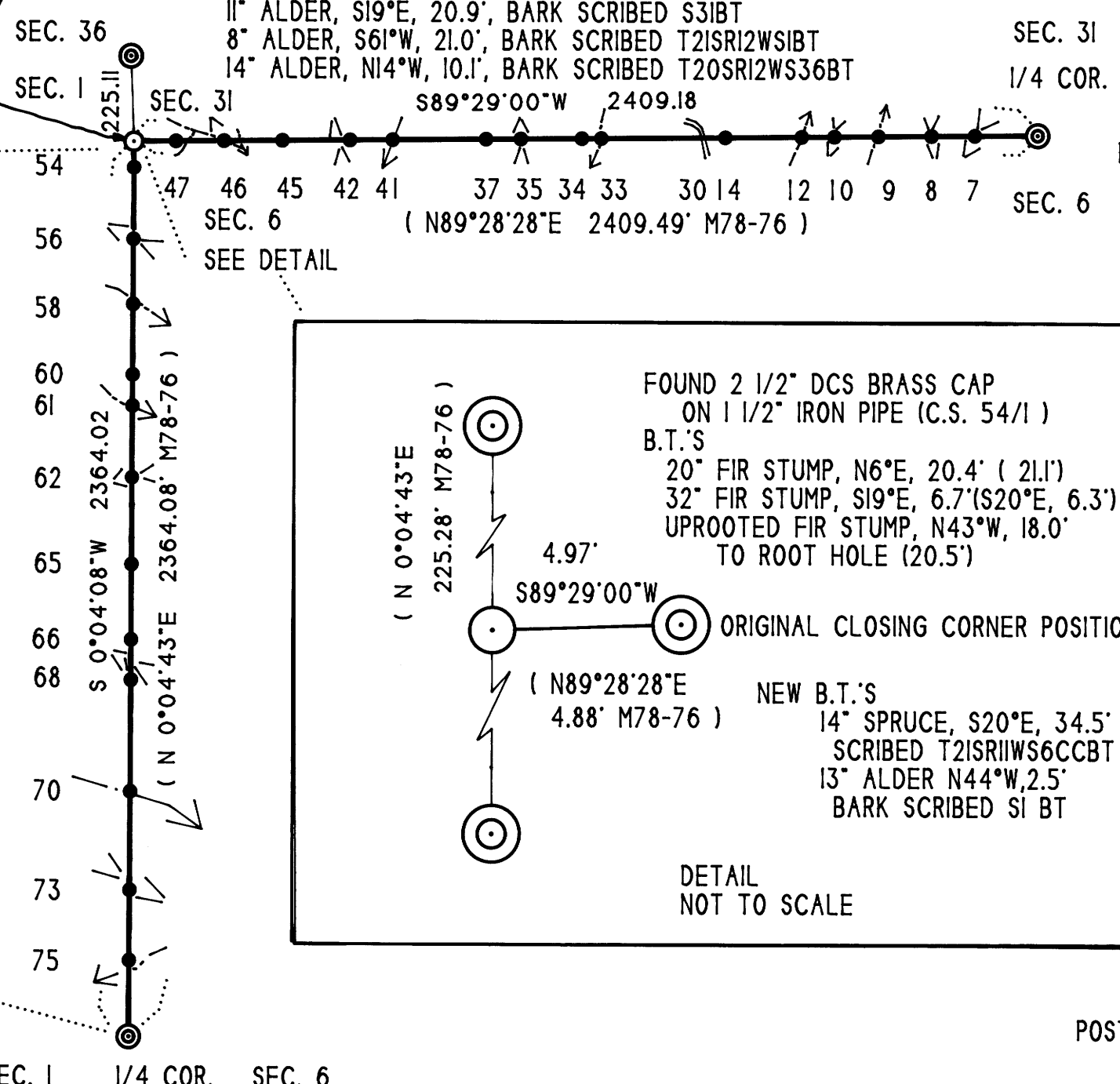


SET 2" BRASS CAP ON 2" IRON PIPE FOR AMENDED CLOSING CORNER  
B.T.'S  
12" ALDER, N71°E, 27.7', BARK SCRIBED T20SR11WS3ICCBT  
18" HEMLOCK, S39°W, 45.3', SCRIBED SIBT  
8" SPRUCE, N84°W, 28.3', CHOPPED X  
COUNTY SURVEYOR'S BRASS CAP  
BEARS N89°29'00"E, 4.97'

FOUND 2 1/2" ALUMINIUM PIPE (SET BY DURHAM IN 1964) MENASHA RECORDS  
B.T.'S (C.S. 54/1)  
30" FIR SNAG, S88°W, 41.6', (S85°W, 40.9')  
22" HEMLOCK STUMP, N15°E, 29.8', (N15°30'E, 30.1')  
38" FIR STUMP, N48°E, 42.2', VERY ROTTEN (40.1')  
ROTTEN FIR STUMP, N5°E, 30.7', SCRIBING VISIBLE (N5°30'E, 28.4')

NEW B.T.'S  
9" DOUG. FIR, N39°E, 16.5', SCRIBED S31 BT  
11" ALDER, S19°E, 20.9', BARK SCRIBED S31BT  
8" ALDER, S61°W, 21.0', BARK SCRIBED T21SR12WSIBT  
14" ALDER, N14°W, 10.1', BARK SCRIBED T20SR12WS36BT

FOUND 2 1/2" COUNTY SURVEYOR'S OFFICE BRASS CAP  
ON 1 1/2" IRON PIPE, 8" ABOVE GROUND (C.S. 59/40)  
B.T.'S  
24" DOUG. FIR, S19°W, 29.4', HEALED FACE (S18°W, 29.8')  
19" DOUG. FIR, N31°W, 18.6', HEALED FACE (18.3')  
NEW B.T.'S  
25" DOUG. FIR, N52°E, 26.2', SCRIBED 1/4S31BT  
19" DOUG. FIR, S78°E, 67.9', SCRIBED 1/4S6BT



FOUND 2 1/2" BRASS CAP ON 2 1/2" IRON PIPE  
MARKED 1/4, S1 S6, PLS 497 1979 (C.S. 58/140 N)  
B.T.'S (C.S. 58/140 N)  
15" DOUG. FIR, N24°W, 11.0', HEALED BLAZE (N25°W)  
FIR WINDFALL, S31°E, 48.5' (S31°30'E, 45.2')  
NEW B.T.'S  
12" HEMLOCK, N61°E, 11.7', SCRIBED 1/4S6BT  
14" DOUG. FIR, S26°E, 27.9', SCRIBED 1/4S6BT  
16" DOUG. FIR, S62°W, 11.7', SCRIBED 1/4S1BT  
FENCE POST 1' NORTH OF CORNER

LEGEND

SURVEYED LINES	—————
POSTED & BLAZED LINES	—————
FOUND CORNERS	⊙
CORNERS SET	⊙
ALUMINIUM LINE POST	●
DIRT ROAD	—————
RIDGE	>>>
STREAM	—————

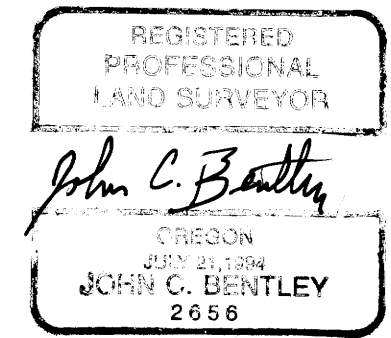
POST #	REF. TREE DIA. SPECIES	BRG. AND DIST. FROM POST TO REF. TREE	H.D. TO LINE POST FROM NEAREST COR.
7	12" HEMLOCK	N68°W 8.7'	167' E TO N1/4 S6
8	14" HEMLOCK	N51°E 8.7'	293' E TO N1/4 S6
9	21" ALDER	S76°E 3.0'	424' E TO N1/4 S6
10	12" ALDER	N79°W 5.4'	541' E TO N1/4 S6
12	23" ALDER	S1°E 11.9'	628' E TO N1/4 S6
14	8" HEMLOCK	N56°E 15.4'	831' E TO N1/4 S6
30	ROAD CROSSING		883' E TO N1/4 S6
33	11" DOUG. FIR	S5°W 5.3'	1161' E TO N1/4 S6
34	11" DOUG. FIR	S76°E 8.4'	1191' W TO NW S6
35	5" ALDER	N15°E 3.6'	1029' W TO NW S6
37	8" HEMLOCK	N12°W 15.2'	936' W TO NW S6
41	16" ALDER	S7°W 10.3'	688' W TO NW S6
42	9" DOUG. FIR	N21°E 2.5'	575' W TO NW S6
45	13" ALDER	S78°W 9.1'	395' W TO NW S6
46	12" ALDER	S26°E 32.5'	239' W TO NW S6
47	21" ALDER	S65°E 8.9'	112' W TO NW S6
54	9" ALDER	S42°E 11.6'	69' N TO NW S6
56	5" DOUG. FIR	N63°E 9.4'	258' N TO NW S6
58	10" ALDER	S83°E 5.2'	429' N TO NW S6
60	11" DOUG. FIR	S84°E 10.3'	616' N TO NW S6
61	15" ALDER	N2°E 5.5'	699' N TO NW S6
62	12" SPRUCE	S9°W 2.1'	887' N TO NW S6
65	5" CHITTUM	S23°W 10.0'	1117' N TO NW S6
66	6" CHITTUM	N69°E 2.2'	1049' S TO W1/4 S6
68	3" DOUG. FIR	N62°W 15.6'	943' S TO W1/4 S6
70	25" ALDER	N32°E 20.5'	648' S TO W1/4 S6
73	4" CEDAR	S83°E 3.3'	388' S TO W1/4 S6
75	14" ALDER	N88°E 14.0'	202' S TO W1/4 S6

## NARRATIVE

THE PURPOSE OF THIS SURVEY WAS TO ESTABLISH I.P. TIMBERLANDS OPERATING COMPANY, LTD., PROPERTY LINES AND CORNERS IN SECTION 6, TOWNSHIP 21 SOUTH, RANGE 11 WEST, WM. CORNERS WERE SET FOLLOWING THE 1973 B.L.M. MANUAL OF INSTRUCTIONS. THE EQUIPMENT USED ON THIS JOB WAS A NIKON DTM A5 TOTAL STATION WITH A DATA COLLECTOR. THE BASIS OF BEARING WAS DETERMINED BY SOLAR OBSERVATION USING THE HOUR ANGLE METHOD. THE SURVEY USED TO CONTROL THIS SURVEY WAS M78-76 BY WARD IN 1979.

THE CLOSING CORNER IN SECTION 6 WAS MONUMENTED BY THE DOUGLAS COUNTY SURVEYOR IN 1967, C.S. 54/1. WARD, IN 1979, CORRECTLY CALCULATED THE TRUE POSITION OF THE CLOSING CORNER, BUT DID NOT MONUMENT THE POSITION. IN THIS SURVEY, I MONUMENT THE TRUE CLOSING CORNER POSITION ON LINE BETWEEN THE QUARTER CORNER OF SECTION 6 AND SECTION 1 AND THE SECTION CORNER FOR SECTION 1 AND SECTION 36, USING THE BEARING FROM THE QUARTER CORNER OF SECTION 6 AND SECTION 31 THROUGH THE OLD CLOSING CORNER TO WHERE THAT INTERSECTS THE OTHER LINE.

THE BEARINGS TO THE BEARING TREES ESTABLISHED IN THIS SURVEY WERE TAKEN TO THE CENTER OF THE TREE AND DISTANCES WERE MEASURED TO AN 8" SPIKE IN SIDE CENTER. THE ALUMINIUM POSTS USED TO MARK THE BOUNDARY LINE ARE STAMPED WITH THE BEARING AND DISTANCE TO THE NEAREST PROPERTY CORNER AND HAVE A MAGNET PLACED AT THE BASE OF THE POST.



SURVEYED BY JOHN C. BENTLEY L.S. 2656 RENEWAL 12/31/95  
P.O. BOX 588  
NORTH BEND, OR. 97459

MAP FILE M 121-68

MAP FILE M 121-68