

MAP FILE M121-58A

FILED  
Date: 3-14-95 By: JP  
This survey consists of: 2  
Map: M121-58A  
Narrative:  
Corner Rpt:  
DOUGLAS COUNTY SURVEYOR

SCALE 1"=400'

- NARRATIVE - PAGE 1 OF 2

THIS SURVEY WAS MADE IN SEPTEMBER AND OCTOBER 1994 BY DANIEL W. BAKER OF BAKER AND ASSOCIATES, SURVEYORS, OF EUGENE, OREGON. THE PURPOSE OF THIS SURVEY WAS TO LOCATE AND MARK IN THE FIELD A PORTION OF THE PROPERTY LINES OF WEYERHAEUSER COMPANY OWNERSHIP IN SECTION 29, TOWNSHIP 24 SOUTH, RANGE 3 WEST, W.M. CLOSED RANDOM TRAVERSES WERE RUN BETWEEN FOUND CORNERS WITH A WILD T1000 THEODOLITE, WITH A D115 EDM, WITH A MINIMUM ERROR OF CLOSURE OF BETTER THAN 1:10000. THE BASIS OF BEARING FOR THIS SURVEY WAS SOLAR OBSERVATION PER CSF NO. M113-43. ALL SECTION CORNERS, THE NORTH AND SOUTH 1/4 CORNERS, THE EAST 1/16 ON THE NORTH SECTION LINE, AND THE WEST 1/16 ON THE SOUTH SECTION LINE, WERE USED FOR CONTROL. CORNERS SET IN THIS SURVEY ARE 5/8" X 30" REBARS WITH YELLOW PLASTIC CAPS MARKED "D.W.BAKER PLS 1978", UNLESS NOTED OTHERWISE. THE TRUE PROPERTY LINES, OFFSET FROM THE RANDOM TRAVERSES, WERE MARKED BY BLAZING TREES (BLAZES PAINTED RED) ON EITHER SIDE OF THE TRUE LINE. BEARING TREES SET AND/OR MEASURED IN THIS SURVEY ARE AT MAGNETIC 20' DECLINATION AND DISTANCES WERE TO AN 8" SPIKE AT SIDE AND CENTER OF THE TREE. 6 FOOT METAL FENCE POSTS WERE SET AT RANDOM INTERVALS ALONG THE TRUE PROPERTY LINES SO WEYERHAEUSER COMPANY AND ROSEBURG LUMBER COMPANY.

NOTE:  
THE WEYERHAEUSER RAILROAD RIGHT-OF-WAY WAS MARKED USING ENGINEERS NOTES FROM PLATS OF WEYERHAEUSER COMPANY OWNERSHIP ALONG THE SUTHERLIN RAILROAD. THE CENTERLINE RAILROAD GRADE CROSSING ON THE NORTH SECTION LINE WAS HELD AT 1635 FEET ON SAID SECTION LINE FROM THE NORTHEAST CORNER OF SECTION 29 TO THE NORTH 1/4 CORNER OF SECTION 29 PER SUTHERLIN RAILROAD PLATS. THE CENTERLINE RAILROAD GRADE CROSSING ON THE SOUTH SECTION LINE WAS HELD AT 1933 FEET FROM THE SOUTHWEST CORNER OF SECTION 29 ON A TRUE LINE BETWEEN THE SOUTHWEST AND THE SOUTHEAST CORNERS OF SECTION 29 AS PER SUTHERLIN RAILROAD PLATS. CORNERS SET ALONG THE RAILROAD GRADE WERE SET BY HOLDING THE POSITIONS ON THE NORTH AND SOUTH LINES AND USING THE GRANT METHOD TO ADJUST THE DEED POSITIONS TO SET THE PROPERTY CORNERS ON THE RIGHT-OF-WAY. CORNERS SET IN CSF NO. M54-35A WERE FOUND TO BE OUT OF POSITION AND WERE NOT USED TO MARK THE RIGHT-OF-WAY IN THE NORTHWEST 1/4 OF THE NORTHEAST 1/4 OF SECTION 29.

DEED REFERENCE FOR RAILROAD - VOL.134 PAGE 482, VOL.135 PAGE 475, AND VOL.136 PAGE 310 DOUGLAS COUNTY OFFICIAL RECORDS

**BASIS OF BEARING: SOLAR OBSERVATION AS PER CSF NO. M113-43**  
**LEGEND**

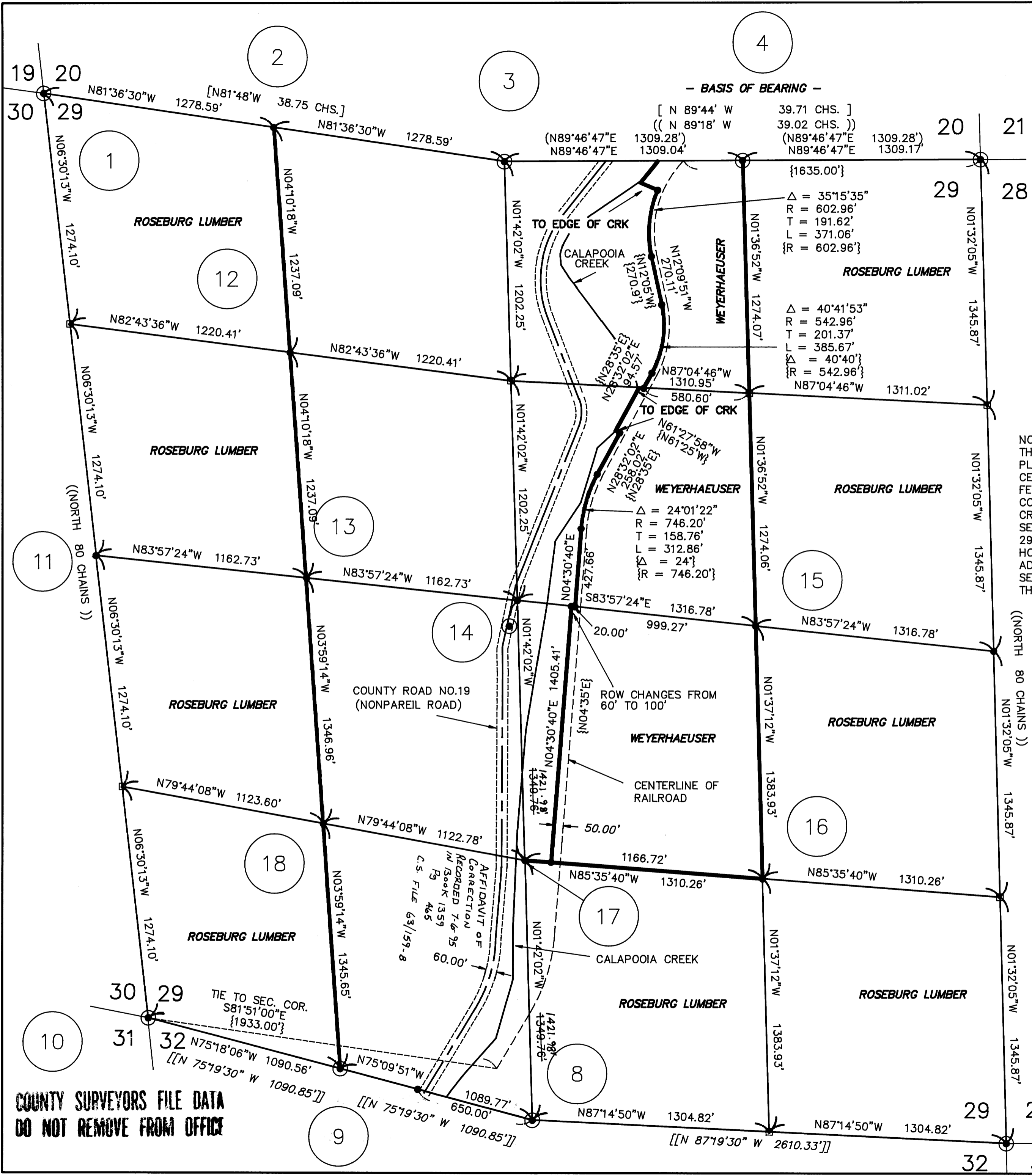
- - CORNERS FOUND (AS NOTED)
- - CORNERS SET - 5/8" X 30" REBARS WITH YELLOW PLASTIC CAPS MARKED "D.W.BAKER PLS 1978" unless noted otherwise.
- - CALCULATED POINT (NOT SET)
- - BLAZED PROPERTY LINE

- [ ] - RECORD DATA - 1950 GLO
- ( ) - RECORD DATA - CSF NO. M113-43
- (( )) - RECORD DATA - 1871 GLO
- [[ ]] - RECORD DATA - 1956 DOUGLAS COUNTY
- { } - RECORD DATA - SUTHERLIN RAILROAD PLATS

NOTE: LOCATION OF COUNTY ROAD NO. 19 (NONPAREIL ROAD) IS AS TRAVELLED. CORNER NOTES ON PAGE 2

**SURVEY IN ALL QRTS. SEC. 29, T24S, R3W, W.M. DOUGLAS COUNTY, OREGON**

CLIENT: <b>WEYERHAEUSER COMPANY</b>	
DRAWN BY: <b>KRC</b>	<b>BAKER AND ASSOCIATES, SURVEYORS</b>
DATE: <b>10/15/94</b>	<b>1385 OAK STREET - SUITE 3</b>
FILE: <b>WEYCO\240329</b>	<b>EUGENE, OREGON (503) 343-7243</b>



- BASIS OF BEARING -

[ N 89°44' W 39.71 CHS. ]  
(( N 89°18' W 39.02 CHS. ))  
(N89°46'47"E 1309.28')  
(N89°46'47"E 1309.04')  
(N89°46'47"E 1309.28')  
(N89°46'47"E 1309.17')

Δ = 35°15'35"  
R = 602.96'  
T = 191.62'  
L = 371.06'  
{R = 602.96'}

Δ = 40°41'53"  
R = 542.96'  
T = 201.37'  
L = 385.67'  
{R = 542.96'}

Δ = 24°01'22"  
R = 746.20'  
T = 158.76'  
L = 312.86'  
{R = 746.20'}

REGISTERED PROFESSIONAL LAND SURVEYOR  
DANIEL W. BAKER  
JULY 16, 1982  
OREGON  
EXPIRES 12/31/95

COUNTY SURVEYORS FILE DATA DO NOT REMOVE FROM OFFICE

MAP FILE M121-58A