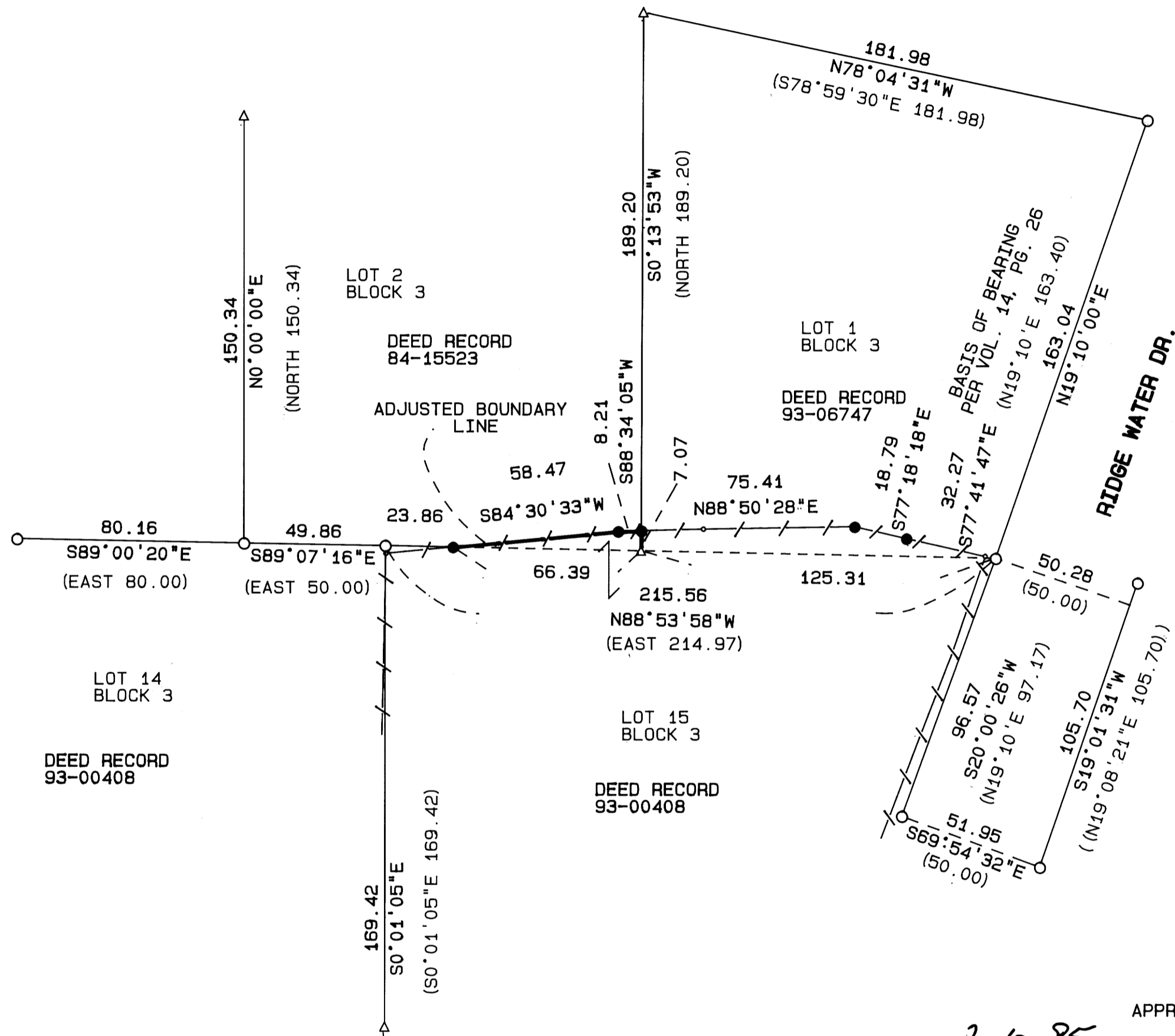


BOUNDARY LINE ADJUSTMENT

LOTS 1, 2 & 15, BLOCK 3, RIDGEWATER ESTATES
 VOL. 14, PG. 26,
 IN THE NW 1/4 SEC. 22, T 25 S, R 5 W, W.M.
 for GEORGE & ROSEMARIE BAUCOM
 9 FEB 1995

FILED
 Date: 3-1-95 By: JP
 This survey consists of:
 Map: M/21-56
 Narrative: -
 Corner Rpt: -

DOUGLAS COUNTY
 SURVEYOR



LEGEND:

- Found 5/8" Iron Rod or as noted.
- Set 5/8" X 30" Iron Rod with Yellow Plastic Cap marked "AA SURVEYING INC."
- △ Calculated Point, No Monumentation.
- Fence line with fence post.

RECORD INFORMATION:

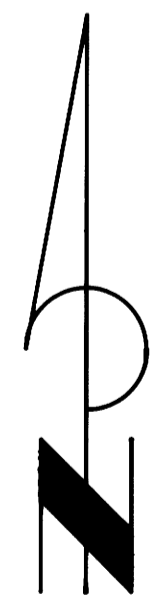
- () Volume 14, Page 26, Ridgewater Estates Subdivision
- (()) Survey M 109-71

NARRATIVE

The purpose of this plat was to delineate the encroachment by Lot 15, Block 3, Ridgewater Estates onto Lots 1 & 2, Block 3, said subdivision. Based on monuments found and the existing fencing as shown the encroachment was calculated, and the basis for an administrative Boundary Line Adjustment by the City of Sutherlin.

APPROVALS

Approved: 2-10-95
 1995
 By: Richard Schwartz
 City of Sutherlin Community Development Specialist



SCALE: 1 inch : 40 feet
 BOUNDARY LINE ADJUSTMENT

REGISTERED
 PROFESSIONAL
 LAND SURVEYOR
Mark A. Heimburger
 OREGON
 JULY 15, 1987
 MARK A. HEIMBURGER,
 2287
 EXP. 6/30/95

**COUNTY SURVEYORS FILE DATA
 DO NOT REMOVE FROM OFFICE**

MAP FILE M/21-56

MAP FILE M/21-56