

RECORD OF SURVEY FOR JAKE BULLER IN

Date: 2-25-95 By: JP This survey consists of: Map: M 121-55 Narrative: Corner Post: COUNTY SURVEYORS FILE DATA DO NOT REMOVE FROM OFFICE

SCALE 1" = 100'

LEGEND

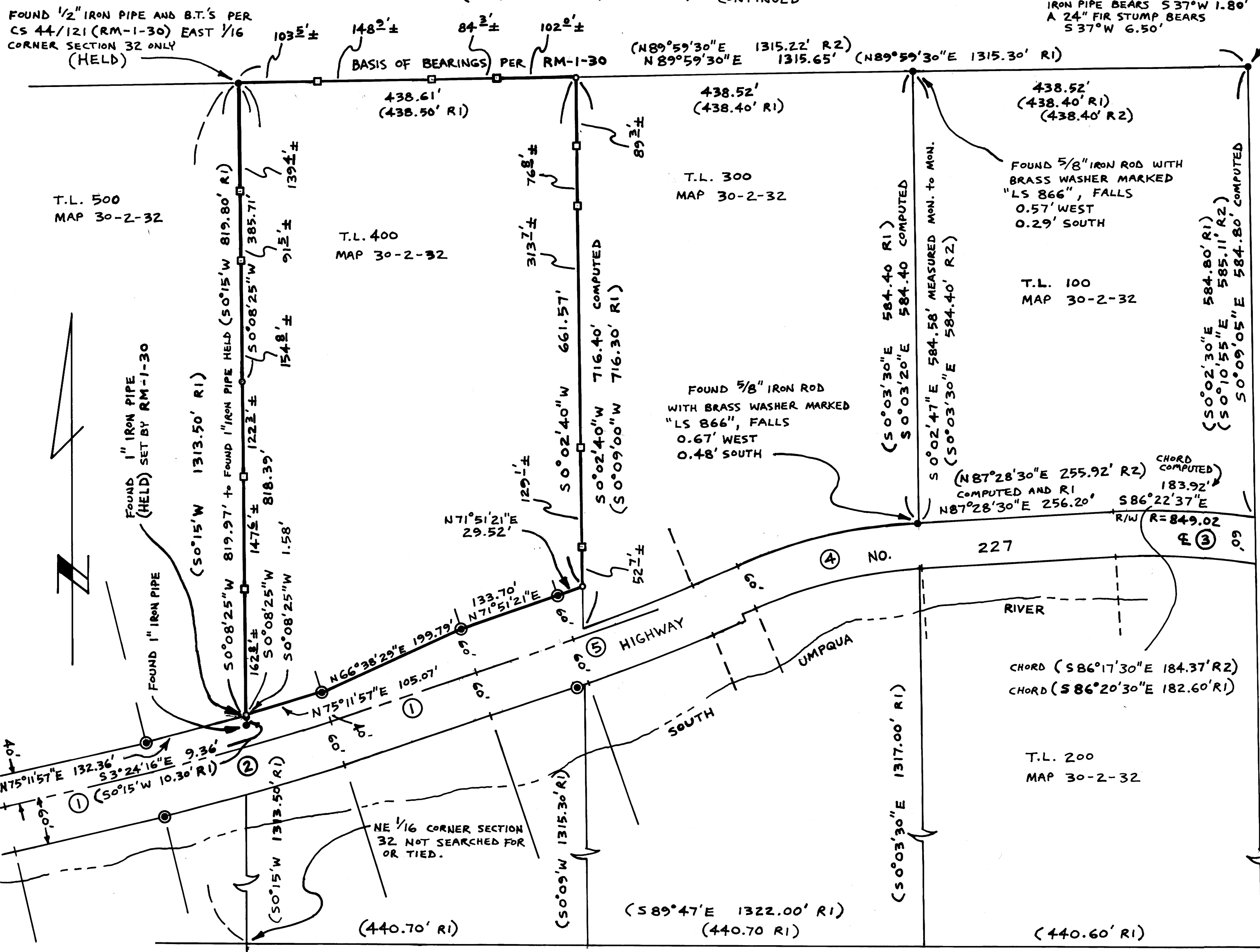
- = FOUND MONUMENT AS SHOWN
○ = FOUND 5/8" IRON ROD WITH ALUMINUM CAP INSCRIBED "DOUGLAS CO RD DPT R-W", HELD FOR RIGHT OF WAY HIGHWAY 227, PER M 112-60 A-E
○ = SET 5/8" X 30" IRON ROD WITH YELLOW PLASTIC CAP INSCRIBED "FORT UMPQUA PLS 2417", SET 2-25-94
□ = SET 12" NAIL ON PROPERTY LINE
(R1) = RECORD DATA PER CS 44/121 (RM-1-30)
(R2) = RECORD DATA PER CS 58/143 (M 91-21)
(R3) = RECORD DATA PER M 77-39

NARRATIVE

THE PURPOSE OF THIS SURVEY IS TO MONUMENT THAT PORTION OF THE LAND CONVEYED BY INSTRUMENT NUMBER 94-6364 DOUGLAS COUNTY DEEDS AND RECORDS, ALSO KNOWN AS TAX LOT 400 MAP 30-2-32, WHICH IS NORTH OF HIGHWAY 227 (CANYONVILLE-TRAIL HIGHWAY). I HELD THE FOUND MONUMENTS AT THE NE CORNER OF SECTION 32 AND THE EAST 1/16 CORNER OF SECTION 32 FOR THE BASIS OF BEARINGS AND TO PRORATE THE PROPERTY CORNERS ALONG THE NORTH LINE OF SECTION 32. RM-1-30 ORIGINALLY LAID OUT THESE PARCELS OF LAND AND HAS AN OBVIOUS 6 MINUTE ± ERROR IN THE NORTH-SOUTH BEARINGS. THEREFORE I USED THE RECORD DISTANCES PER RM-1-30 TO COMPUTE RECORD DIFFERENCES FOR THESE NORTH-SOUTH RUNNING PROPERTY LINE BEARINGS. I HELD THE MEASURED BEARING BETWEEN THE EAST 1/16 CORNER SECTION 32 AND THE FOUND 1" IRON PIPE PER RM-1-30 AS THE BASIS TO COMPUTE THE BEARINGS OF THE NORTH-SOUTH RUNNING PROPERTY LINES TO THE EAST. I HELD THE MONUMENTS SET BY DOUGLAS COUNTY PER M 112-60 A-E TO ESTABLISH THE RIGHT OF WAY OF HIGHWAY 227 (CANYONVILLE-TRAIL HIGHWAY). CONTINUED

FEBRUARY 25, 1994

COUNTY SURVEYORS FILE DATA DO NOT REMOVE FROM OFFICE



SECTION CORNER 29 | 28 T30S, R2W, W.M. 32 | 33 FOUND 18" X 18" GRANITE ROCK WITH + ON TOP (HELD) A 1 1/4" IRON PIPE BEARS S 37° W 1.80' A 24" FIR STUMP BEARS S 37° W 6.50'

NARRATIVE CONTINUED I SET THE MONUMENT AT THE SE INTERSECTION ON THE TANGENT PRODUCED NORTHEASTERLY RATHER THAN ON THE SPIRAL CURVE. I SET THE MONUMENT AT THE SW INTERSECTION POINT AT AN INTERSECTION WITH A STRAIGHT LINE BETWEEN THE SPIRAL CURVE POINTS RATHER THAN ON THE ACTUAL SPIRAL CURVE RIGHT OF WAY. THE SET 12" NAILS AS SHOWN ON THE LEGEND WERE SET AS LINE POINTS ONLY AND WERE NOT INTENDED TO BE AT AN EXACT DISTANCE ALONG THE LINE.

- CURVE DATA
1 CENTERLINE Δs = 1° 30' 00" Ls = 200.00'
2 CENTERLINE ΔT = 6° 36' 00" Ts = 320.27' Ts = 320.27' ΔC = 3° 36' 00" D = 1° 30' CL L = 240.00' OLD HIGHWAY PER RM-1-30
3 CENTERLINE Δ = 18° 46' D = 7° R = 819.02
4 CENTERLINE Δ = 20° 25' D = 9° R = 637.80'
5 CENTERLINE Δ = 9° 22' D = 3° R = 1910.08'

REFERENCE SURVEYS CORNER RENEWALS
CS 44/121 (RM-1-30) T30S R2W
CS 58/143 (M 91-21) # 133
M 77-39 # 170
M 112-60 A-E

SURVEYED BY: FORT UMPQUA LAND SURVEYING 105 W. "Q" ST. SUITE 9 SPRINGFIELD, OR 97477 (503) 746-1898 WILLIAM O. BECKLEY, PLS 2417 (503) 440-9439

REGISTERED PROFESSIONAL LAND SURVEYOR

William O. Beckley OREGON JANUARY 23, 1990 WILLIAM O. BECKLEY 2417

EXPIRES 12-31-95

MAP FILE M 121-55

MAP FILE M 121-55