

LONE ROCK TIMBER CO.

PO BOX 1127 ROSEBURG OREGON 97470 DATE: DECEMBER 1994
 SECTION 18, TOWNSHIP 22 SOUTH, RANGE 06 WEST, W.M. DOUGLAS COUNTY, OREGON
 LONE ROCK TIMBER TRACT: J22-6-18 SCALE: 1" = 600'

LEGEND:

- ⊙ - FOUND MONUMENT
- - SET 5/8" BY 40" IRON ROD WITH 2 INCH ALUMINUM CAP
- ▲ - COMPUTED NOT SET
- - PROJECTED LINES
- - PROPERTY LINES FLAGGED, BLAZED, AND PAINTED
- | | - GLO FIELD NOTES SURVEY FILED IN DOUGLAS COUNTY SURVEYORS OFFICE PAGES 1450 - 1451
- || | - DONALD BRANCH SURVEY FILED IN DOUGLAS COUNTY SURVEYORS OFFICE M102-29
- ||| | - BLM SURVEY FIELD NOTE IN DOUGLAS COUNTY SURVEYORS OFFICE PAGES 15940 - 15942
- < > - WILFORD HAINES SURVEY FILED IN DOUGLAS COUNTY SURVEYORS OFFICE M3-22
- << >> - CALCULATED LINE FROM FIELD NOTES OF WILFORD HAINES SURVEY FILED IN DOUGLAS COUNTY SURVEYORS OFFICE
- <<< >>> - GLO 1871 RECORD SURVEY IN CHAINS

REGISTERED
 PROFESSIONAL
 LAND SURVEYOR
Ken W. Hoffine
 OREGON
 JULY 18 1987
 KEN W. HOFFINE
 228
 EXPIRES 6-30-95



FILED

Date: 2-6-95 By: AP
 This survey consists of:
 Map: M 121-43
 Narrative: _____
 Corner Rpt: _____

DOUGLAS COUNTY
 SURVEYOR

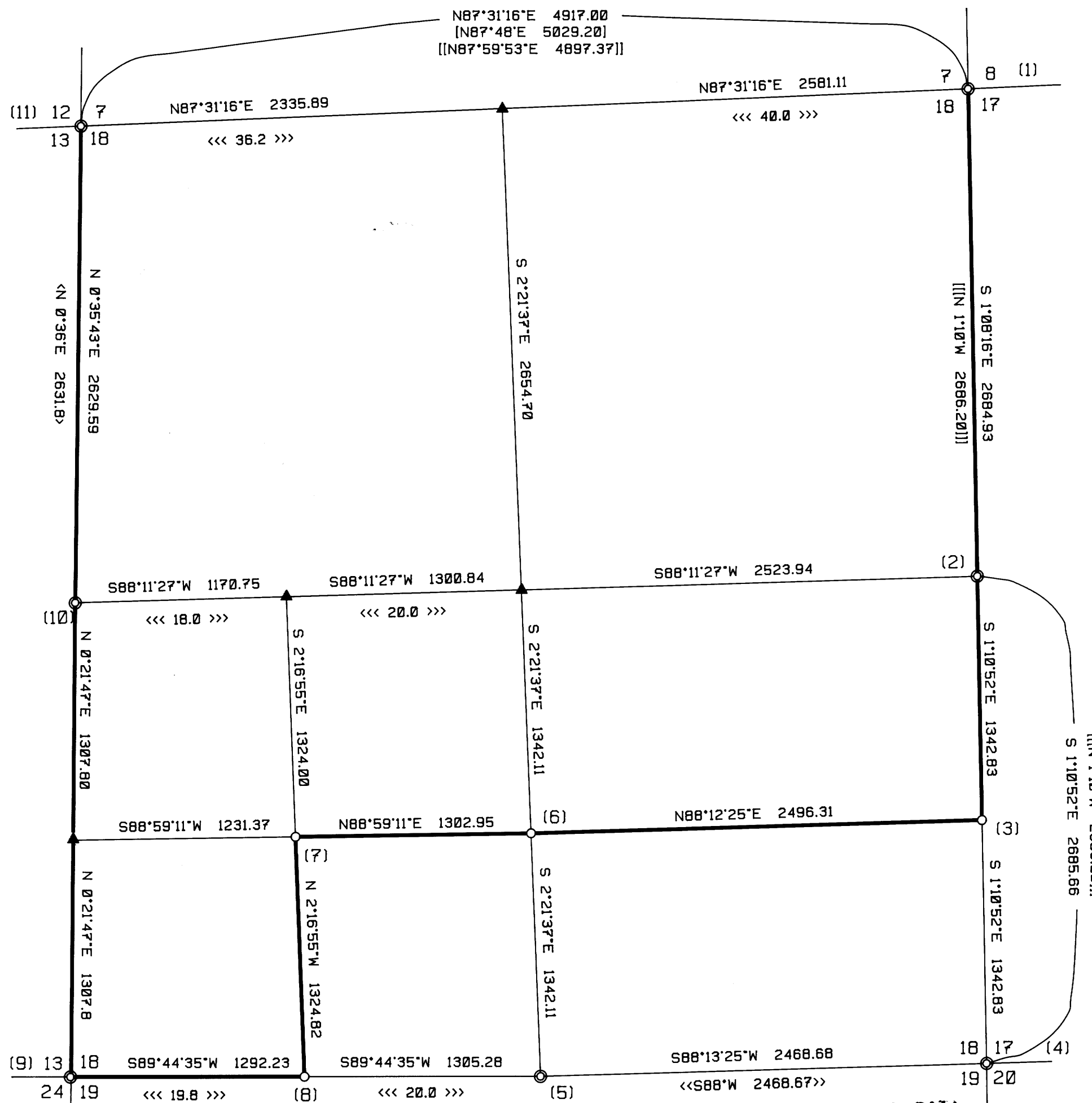
NARRATIVE

THIS SURVEY WAS CONDUCTED TO ESTABLISH PROPERTY CORNERS AND PROPERTY LINES FOR TIMBER CUTTING PURPOSES. WE INITIATED THIS SURVEY AT THE NE SECTION CORNER OF SECTION 18 A COUNTY BCIP SET FROM ORIGINAL EVIDENCE. WE THEN TRAVERSED SOUTHERLY TO THE E 1/4 OF SECTION 18 A BLM BCIP SET BY PROPORTION THEN TO THE SE CORNER OF SECTION 18 A BLM BCIP SET FROM ORIGINAL EVIDENCE. WE THEN TRAVERSED FROM A POINT NEAR THE S 1/16 BETWEEN SECTION 18 AND 17 WESTERLY ALONG OUR PROPERTY LINE TO THE SW CORNER AND THE W 1/4 OF SECTION 18 WHICH ARE HAINES T-BARS SET FROM ORIGINAL EVIDENCE. WE CONTINUED OUR TRAVERSE TO THE NW CORNER OF SECTION 18 AN "X" IN ROCK BY HAINES SET BY PROPORTION, THEN CLOSED OUR TRAVERSE BACK AT THE NE CORNER OF 18. FROM NEAR THE CENTER SOUTH 1/16 WE HAD A SMALL CLOSED LOOP SURVEY TO THE SOUTH 1/4 OF SECTION 18. ANOTHER HAINES T-BAR SET FROM ORIGINAL EVIDENCE. WE SEARCHED FOR THE N 1/4 OF 18, FINDING NO CONCLUSIVE EVIDENCE WE COMPUTED THIS LOCATION FOR THE CORNER BY PROPORTION AND COMPUTED THE BREAKDOWN OF SECTION 18. WE THEN SET THE S 1/16 BETWEEN SECTIONS 17 AND 18. WEST 1/16 BETWEEN SECTIONS 18 AND 19, THE SW 1/16 AND CS 1/16 OF SECTION 18. PAINTING, TAGGING, AND BLAZING ALL LINES SHOWN HEREON. FOR ADDITIONAL CONTROL AND BASE LINE FOR BASIS OF BEARING WE USED SURVEY GRADE GPS STATIONS AT TRAVERSE POINTS LOCATED NEAR THE W 1/4, E 1/4 AND CS 1/16. THIS SURVEY WAS DONE WITH A LIETZ SET 2 TOTAL STATION AND TRIMBLE 4000 ST GPS UNITS WITH GARY ANGIOLET, JERRY RAGON, IGNACIO ROMAN, AND PAT KELLY ASSISTING ME.

CORNER INFORMATION

THE FOLLOWING IS A RECORD OF ALL CORNERS FOUND OR SET DURING THE COURSE OF THIS SURVEY.

- 1) NORTH EAST SECTION CORNER OF 18
 FOUND: COUNTY SURVEYORS BRASS CAP 0.4 FEET ABOVE GROUND.
 -- 31" MAPLE IN CLUMP OF THREE BEARS S22°59'W, 28.2 FEET
 -- 11" WHITE FIR BEARS S70°52'W, 107.8 FEET, SCRIBING VISIBLE WITH COUNTY TAG
 -- 21" WHITE FIR BEARS N27°37'W, 37.4 FEET, WELL HEALED SCAR WITH COUNTY TAG
 -- 31" DOUGLAS FIR BEARS N35°30'W, 15.5 FEET, WELL HEALED SCAR WITH 3 B.T. TAGS
 CORNER LIES ON NORTHERLY GENTLE SLOPE WITH GRASS FIELDS TO THE EAST.
- 2) EAST 1/4 OF SECTION 18
 FOUND: BLM BRASS CAP 0.5 FEET ABOVE GROUND.
 -- 18" CEDAR BEARS S20°W, 44.2 FEET, WELL HEALED FACE.
 CORNER LIES IN A CREEK BED WHICH FLOWS SOUTHWESTERLY.
- 3) SOUTH 1/16 BETWEEN SECTIONS 18 AND 17
 SET: 5/8" X 36" REBAR WITH 2" ALUMINUM CAP WHICH READS LONE ROCK TIMBER S 1/16, S18, S17 1994 PLS 2291.
 -- 12" DOUGLAS FIR BEARS N59°03'E, 10.6 FEET, WE TAGGED AND SCRIBED S 1/16 S17 B.T.
 -- 17" DOUGLAS FIR BEARS N48°38'W, 23.2 FEET, WE TAGGED AND SCRIBED S 1/16 S18 B.T.
 CORNER LIES ON A WEST SLOPE APPROXIMATELY 80 FEET EAST OF CREEK AND 320 FEET SOUTH OF SAME CREEK.
- 4) SOUTHEAST SECTION CORNER OF 18
 FOUND: 2 INCH BLM BRASS CAP 0.4 FEET ABOVE GROUND.
 -- 54" BURNED HOLLOWED CEDAR BEARS N10°E, 16.8 FEET (TAG READS 14.0 FEET TO FACE) A BLM TAG AND HAINES WASHER WERE PRESENT
 -- 17" MAPLE BEARS N14 1/2'W, 91.2 FEET, WELL HEALED SCAR WITH BLM TAG
 -- 32" MAPLE BEARS S38°W, 60.2 FEET, WELL HEALED SCAR
 -- 27" CEDAR BEARS S68 1/2'E, 28.1 FEET, WELL HEALED SCAR
 CORNER LIES ON A GENTLE NORTHWEST SLOPE APPROXIMATELY 60 FEET FROM EDGE OF FLAT DRAW.
- 5) SOUTH 1/4 OF SECTION 18
 FOUND: HAINES T-IRON WITH WASHER 0.5 FEET ABOVE GROUND.
 -- 18" DOUGLAS FIR BEARS N74°W, 17.7 FEET, WELL HEALED FACE NO RECORD WE TAGGED
 -- 14" DECAYING MAPLE BEARS S57°W, 110.0 FEET (RECORD 109.2 FEET), NO MARKS
 -- 13" DOUGLAS FIR BEARS S22°E, 7.9 FEET, WE SCRIBED 1/4 S19 B.T. AND TAGGED
 -- 14" DOUGLAS FIR BEARS N74°E, 70.8 FEET, WELL HEALED FACE AND BT TAG.
 CORNER LIES ON TOP OF A NARROW RIDGE WHICH RUNS N70°E.
- 6) CENTER SOUTH 1/16 OF SECTION 18
 SET: 5/8" X 36" REBAR WITH 2" ALUMINUM CAP WHICH READS LONE ROCK TIMBER CN 1/16 S18 1994 PLS 2291.
 -- 15" DOUGLAS FIR BEARS N75°12'E, 35.4 FEET, WE SCRIBED CS 1/16, S18, B.T. AND TAGGED
 -- 43" DOUGLAS FIR SCHOOL MARM BEARS S17°17'W, 31.3 FEET, WE SCRIBED CS 1/16, S18, B.T. AND TAGGED
 CORNER LIES ON EXTREMELY STEEP SOUTH SLOPE NORTH OF STEEP DRAW WHICH BEARS WEST TO EAST, 475 FEET EAST FROM TOP OF MAIN RIDGE.
- 7) SOUTHWEST 1/16 OF SECTION 18
 SET: 5/8" X 36" REBAR WITH 2" ALUMINUM CAP WHICH READS LONE ROCK TIMBER SW 1/16 S18 1994 PLS 2291.
 -- 13" WHITE FIR BEARS N35°W, 13.8 FEET, WE SCRIBED SW 1/16, S18, B.T. AND TAGGED
 -- 20" DOUGLAS FIR BEARS N80°E, 28.9 FEET, WE SCRIBED SW 1/16, S18, B.T. AND TAGGED
 CORNER LIES NEAR THE HEAD OF A SOUTHERLY SLOPING DRAW.
- 8) WEST 1/16 BETWEEN SECTION 18 AND 19
 SET: 5/8" X 36" REBAR WITH 2" ALUMINUM CAP WHICH READS LONE ROCK TIMBER W 1/16 S18, S19 1994 PLS 2291.
 -- 4" DOUGLAS FIR BEARS S81°E, 20.2 FEET, WE TAGGED AND FACED.
 -- 3" DOUGLAS FIR BEARS N15°E, 15.3 FEET, WE TAGGED AND FACED.
 CORNER LIES IN YOUNG REPROD. AND IS APPROXIMATELY 45 FEET NORTH OF DRAW.
- 9) SOUTHWEST SECTION CORNER OF 18
 FOUND: HAINES T-IRON 0.3 FEET ABOVE GROUND.
 -- 36" DOUGLAS FIR STUMP BEARS S72°W, 13.5 FEET, NO MARKS VISIBLE
 -- 27" DOUGLAS FIR "HIGH" STUMP BEARS N77°E, 25.2 FEET CHOPPED OUT FACE, SCRIBING BARELY VISIBLE
 -- 70" DOUGLAS FIR "HIGH" STUMP BEARS S70°E, 55.7 FEET, BARK SCRIBING VISIBLE
 -- 20" DOUGLAS FIR BEARS S46°W, 32.5 FEET, WE SCRIBED 22S 7W S24 B.T. AND TAGGED
 CORNER LIES ON A 40% SLOPE TO THE NORTHWEST.
- 10) WEST 1/4 OF SECTION 18
 FOUND: HAINES T-IRON.
 -- 24" DOUGLAS FIR BEARS N8°E, 24.5 FEET, NO FACE 3 B.T. TAGS
 -- 52" DOUGLAS FIR BEARS S10°W, 25.0 FEET, NO FACE LRT LOCATION TAG
 -- ORIGINAL 12" DOUGLAS FIR IS A 55" ROTTEN STUMP BEARS N85°W, 17.8 FEET, OLD FACE VISIBLE, NO SCRIBING
 -- ORIGINAL 10" MAPLE IS A 21" WIND FALL BEARS S55°E, 6.6 FEET, NO VISIBLE SCRIBING
 CORNER LIES ON A 50% SOUTHWEST SLOPE, BLM CLEARCUT TO THE NORTHWEST.
- 11) NORTHWEST SECTION CORNER OF 18
 FOUND: CHOPPED "X" IN ROCK.
 -- 14" DOUGLAS FIR BEARS N50°W, 2.4 FEET, WELL HEALED SCAR WITH BLM TAG
 -- 20" DOUGLAS FIR BEARS N57°E, 17.8 FEET, WELL HEALED SCAR WITH BLM TAG AND HAINES WASHER
 -- 18" DOUGLAS FIR BEARS N50°E, 24.7 FEET (TAG READS 25.6 FEET), WELL HEALED SCAR WITH BLM TAG
 CORNER LIES ON VERY STEEP ROCKY SE SLOPE AND ON NORTH EDGE OF POWERLINES.



COUNTY SURVEYORS FILE DATA
 DO NOT REMOVE FROM OFFICE

MAP FILE M 121-43

MAP FILE M 121-43