

# RESURVEY OF PROPERTY LINES IN NW 1/4 SECTION 10, T25S, R7W, W. M.

FILED

FOR ROSEBURG RESOURCES CO  
P. O. BOX 1088  
ROSEBURG, OREGON

DECEMBER 30, 1994

Date: 1-24-95 By: *MP*  
This survey consists of:  
Map: M121-34  
Narrative: \_\_\_\_\_  
Corner Plat: \_\_\_\_\_

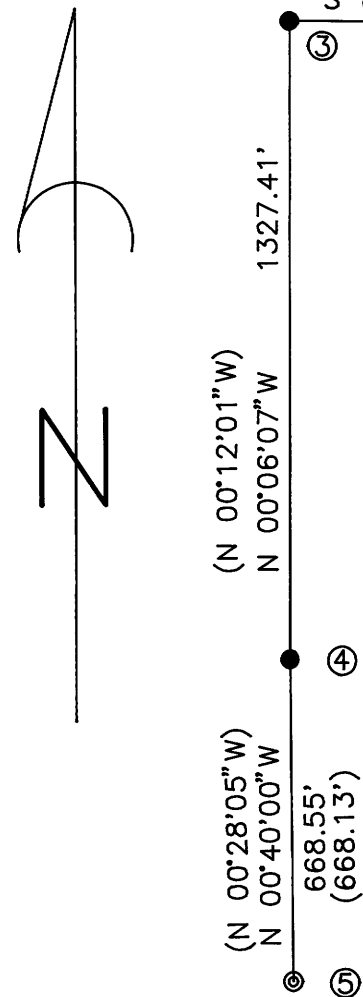
BY MARK F. SMALLEY  
ROSEBURG RESOURCES CO  
P. O. BOX 1088  
ROSEBURG, OREGON

SCALE: 1" = 400'

LEGEND *DOUGLAS COUNTY SURVEYOR*

- ⊙ MONUMENT FOUND AS NOTED
- SET 5/8" X 48" IRON ROD & ALUMINUM CAP MARKED LS 2354
- PROPERTY LINE
- ( ) RECORD DATA - M56-39

- ① C S NE NW 1/256 CORNER  
FOUND 5/8" IRON ROD & ALUMINUM CAP  
BTs: 14" OAK S 37°E 31.0' HEALED  
12" FIR S 78°W 7.6' HEALED
- ② C E NW 1/64 CORNER  
SET 5/8" X 48" IRON ROD & ALUMINUM CAP  
AT RECORD BEARING & DISTANCE FROM  
BT: 18" OAK N 36°W 140.4' HEALED
- ③ NW 1/16 CORNER  
FOUND 5/8" IRON ROD & ALUMINUM CAP  
OUT OF POSITION. RESET ROD & ALUMINUM CAP  
AT RECORD DISTANCE FROM C W 1/16 CORNER  
AND C E NW 1/64 CORNER  
BTs: 12" FIR S 43°E 8.5' PART HEALED  
22" FIR N 40°W 11.2' HEALED
- ④ C W 1/16 CORNER  
SET 5/8" X 48" IRON ROD & ALUMINUM CAP  
AT RECORD BEARING & DISTANCE FROM  
BTs: 23" OAK N 84°W 63.0' HEALED  
27" OAK S 63°W 91.5' HEALED
- ⑤ C N SW 1/64 CORNER  
FOUND 5/8" IRON ROD & ALUMINUM CAP  
BTs: 14" OAK S 34°W 54.1' HEALED  
14" OAK N 82°W 62.8' HEALED



## NARRATIVE

THE PURPOSE OF THIS SURVEY WAS TO RERUN A PORTION OF THE INTERIOR PROPERTY LINES BETWEEN ROSEBURG RESOURCES CO. AND LIGHTHOUSE FARMS IN SECTION 10, T. 25 S., R. 7 W., W. M., DOUGLAS COUNTY, OREGON.

THE CONTROL FOR THIS SURVEY WAS THE SECTION SUBDIVISION DONE BY HOWARD JOHNSTONE IN 1976(M56-39). THE C-S-NE-NW 1/256 AND THE C-N-SW 1/64 CORNERS WERE FOUND AS NOTED. THE C-E-NW 1/64 AND THE CW 1/16 WERE RE-ESTABLISHED FROM BEARING TREES. THE BASIS OF BEARING IS THE LINE BETWEEN THE C-S-NE-NW 1/256 AND THE C-E-NW 1/64 AS SET BY JOHNSTONE. THE MONUMENT FOR THE NW 1/16 CORNER WAS FOUND TO BE OUT OF POSITION IN COMPARISON TO THE CONTROLLING CORNERS, AND WAS RESET AT THE RECORD DISTANCES FROM THE C-E-NW 1/64 AND THE CW 1/16 CORNERS. THE NEW POSITION FOR THE NW 1/16 IS N11°26'10"E, 5.53 FEET FROM THE OLD MONUMENT POSITION. NEW DISTANCES TO THE BEARING TREES WERE TAKEN AS NOTED.

THIS SURVEY WAS PERFORMED IN OCTOBER OF 1994, USING A TOPCON GTS-302 TOTAL STATION TO RUN CLOSED LOOP TRAVERSES.

REGISTERED  
PROFESSIONAL  
LAND SURVEYOR

*Mark F. Smalley*

OREGON  
JULY 26, 1988  
MARK F. SMALLEY  
2354

RENEWS 6/30/96

COUNTY SURVEYORS FILE DATA  
DO NOT REMOVE FROM OFFICE

MAP FILE M121-34

MAP FILE M121-34