

C S File 63-152(W)  
Map File M121-33

FILED

# RECORD OF SURVEY

## SECTION 21, T29S, R8W, W.M.

### DOUGLAS COUNTY, OREGON

SCALE: 1" = 400'

JANUARY 1995

Date: 1-24-95 By: JC  
This survey consists of:  
Map: M121-33  
Narrative: 63/52  
Corner Rpt: \_\_\_\_\_

DOUGLAS COUNTY SURVEYOR

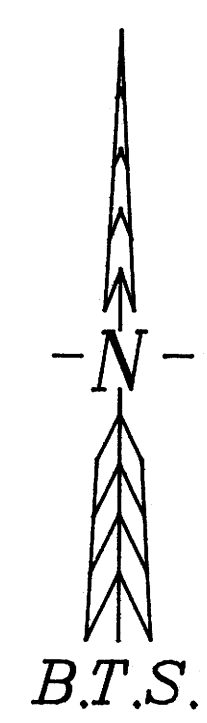
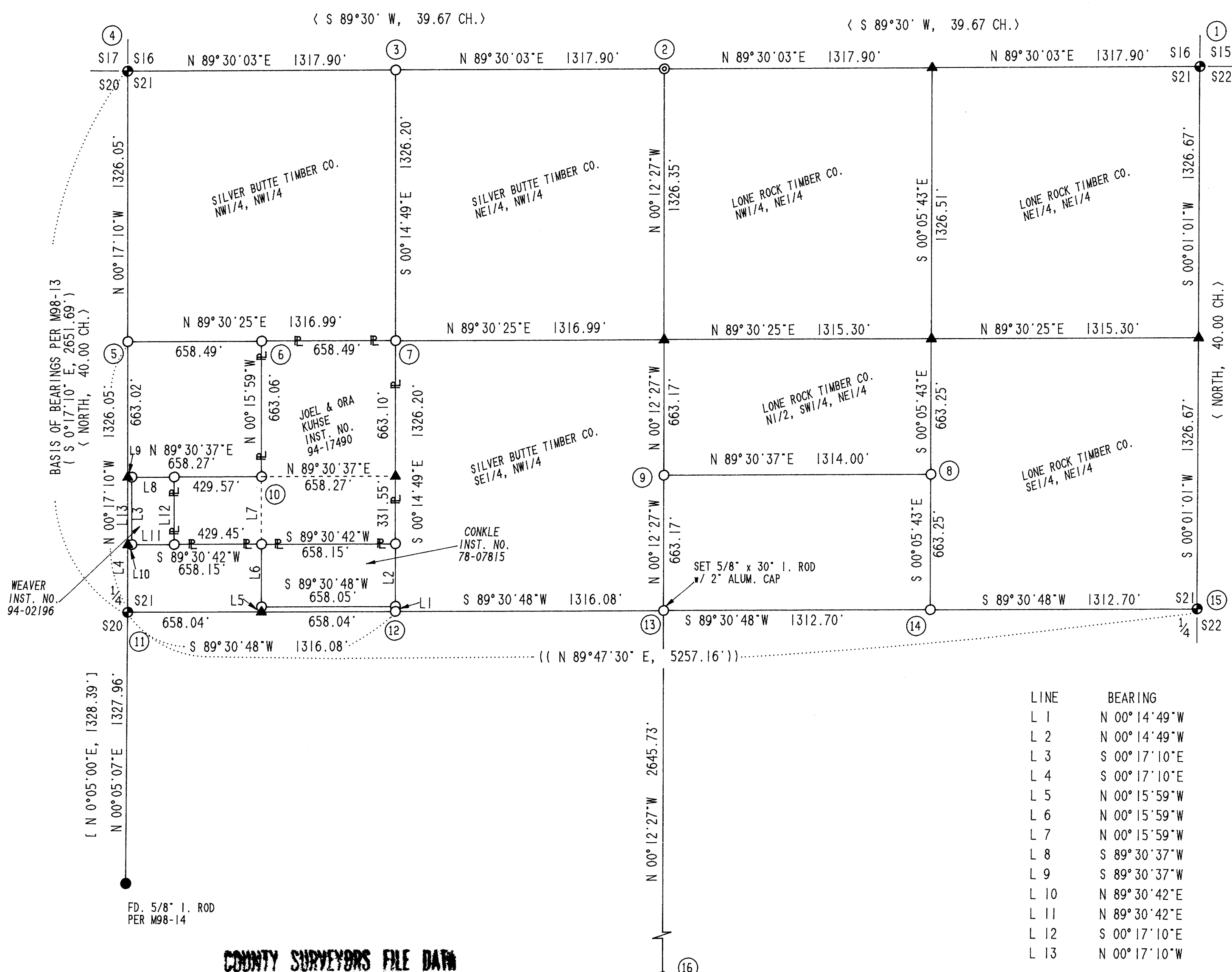
PREPARED BY:  
BTS ENGINEERING & SURVEYING INC.  
431 S.E. MAIN STREET  
ROSEBURG, OR 97470  
(503) 673-0966 FAX (503) 673-0105

PREPARED FOR:  
JOEL & ORA KUHSE  
230 RALSTON LANE  
CAMAS VALLEY, OR. 97416

LONE ROCK TIMBER CO.  
2635 OLD HWY 99S  
ROSEBURG, OR. 97470

SILVER BUTTE TIMBER CO.  
P.O. BOX 4  
RIDDLE, OR. 97469

FOR SEPARATE NARRATIVE  
SEE C.S. FILE NO. 63/52



- LEGEND:**
- ⊙ = SET 1" x 30" I. PIPE  
    ✓ 2 1/2" BRASS CAP
  - = SET 5/8" 30" I. ROD  
    ✓ 1 1/2" ALUM. CAP OR AS NOTED
  - ⊕ = FD. DCSO BCIP
  - = FD. AS NOTED
  - ▲ = COMPUTED POINT, NOT SET
  - ▬ = FLAGGED PROPERTY LINE
  - ⊛ = CORNER DESCRIPTION REFERENCE  
    SEE SEPARATE NARRATIVE
  - ( ) = RECORD CALLS PER M98-13
  - [ ] = RECORD CALLS PER M98-14
  - < > = USGLO RECORD CALLS DENNIS HATHORN, 1855
  - (( )) = RECORD CALLS PER M100-35

LINE	BEARING	DISTANCE
L 1	N 00° 14' 49" W	25.00'
L 2	N 00° 14' 49" W	306.55'
L 3	S 00° 17' 10" E	331.51'
L 4	S 00° 17' 10" E	331.51'
L 5	N 00° 15' 59" W	25.00'
L 6	N 00° 15' 59" W	306.53'
L 7	N 00° 15' 59" W	331.53'
L 8	S 89° 30' 37" W	208.70'
L 9	S 89° 30' 37" W	20.00'
L 10	N 89° 30' 42" E	20.00'
L 11	N 89° 30' 42" E	208.70'
L 12	S 00° 17' 10" E	331.52'
L 13	N 00° 17' 10" W	331.51'

REGISTERED  
PROFESSIONAL  
LAND SURVEYOR

*Kristian O. DeGroot*

OREGON  
JULY 17, 1981  
KRISTIAN O. DEGROOT  
1941

EXPIRES: 12-31-95

**COUNTY SURVEYORS FILE DATA**  
**DO NOT REMOVE FROM OFFICE**

C S File 63-152(W)  
Map File M121-33

Date: 1-24-95 By: JC  
This survey consists of:  
Map: M121-33  
Narrative: C.S. 63/52  
Corner Rpt: \_\_\_\_\_

SURVEY NARRATIVE  
SECTION 21, T.29S. R.8W., W.M.  
January, 1995

Surveyed By: BTS Engineering & Surveying, Inc.  
431 S.E. Main Street  
Roseburg, OR 97470

DOUGLAS COUNTY  
SURVEYOR

Surveyed For:  
Joel & Ora Kuhse Lone Rock Timber Co. Silver Butte Timber Co.  
230 Ralston Lane 2635 Old Hwy. 99 S. P.O. Box 4  
Camas Valley, OR Roseburg, OR 97470 Riddle, OR 97469  
97417

SURVEY REFERENCES:  
Original USGLO Survey by Dennis Hathorn, Contract No. 57,  
April 12, 1855.  
M 98-13  
M 98-14  
M 100-35  
T29S R8W DCSO Corner Renewals #15, #26, #42, #74, #75, #85,  
#155, #161, #197, #198, #199.

The purpose of this survey was to subdivide Section 21, monument corners of Kuhse, Lone Rock Timber Co. and Silver Butte Timber Co. and to flag the boundary of Kuhse's property. The Northeast Corner, Northwest Corner, East 1/4 Corner, West 1/4 Corner and South 1/4 Corner of Section 21 had been perpetuated in their original positions by the Douglas County Surveyor's Office as listed in the corner descriptions. There was no evidence found of the original North 1/4 Corner and it was then restored by single proportionate measurement. The section was then subdivided as per the Manual of Surveying Instruction, 1973 and corners were monumented as shown on the face of the map. The SW 1/4, NW 1/4 was further subdivided and Kuhse's property, Inst. No. 94-17490, Weaver's property, Inst. No. 94-02196 and Conkle's property, Inst. No. 78-07815 were monumented. This survey as performed by Les Fanning, P.L.S. 2664, Kirk Copsey and Matt Dixon using Sokkia Set 4 and Set 5 Total Stations with computations by Kris DeGroot and drafting by Bill Warren.

Corner Descriptions:

All new bearing trees have double blazed faces with a brass washer stamped "PLS 1941" nailed into the lower blaze. Bearings are taken to the center of the tree at the root crown and distances measured to a nail in the root crown at the side and center of the tree.

- 1. Section Corner S16|S15  
S21|S22  
Found 1" galv. iron pipe, by Byron in 1958 (Renewal #75), firmly set, projecting 12" above the ground with a 2 1/2" diameter brass cap stamped:

REGISTERED  
PROFESSIONAL  
LAND SURVEYOR

*Kristian O. DeGroot*

OREGON  
JULY 17, 1981  
KRISTIAN O. DEGROOT  
1941

MAP FILE M121-33

EXPIRES 12/31/95

DOUGLAS COUNTY SURVEYORS OFFICE

S16|S15  
S21|S22  
1958

from which original bearing trees by Hathorn in 1855:  
A 66" fir stump bears S.8°E., 6.6 ft. with no visible scribing or discernable face found.  
A 20" oak snag bears N.32°W., 42.2 ft. with opened and rotted face.  
A 36" madrone bears N.70°E., 30.4 ft. with healed single blaze.  
and bearing trees by Byron in 1958 (Renewal #75):  
A 24" W. fir bears S.32°E., 120.0 ft. healed single blaze.  
A 22" cedar bears N.83°E., 31.7 ft. with healed single blaze.  
A 20" rotting high stumped fir bears N.23°E., 67.7 ft. with healed single face.  
Corner falls ± 80 ft. north of small draw running west, and ± 100 ft. east of logging road.

2. 1/4 S16  
S21

No original corner evidence remains. Corner position restored by single proportionate measurement.

At the 1/4 corner common to Sections 16 and 21, T.29S. R.8W., W.M. I set a 1"X30" galv. iron pipe 28" in the ground with a 2 1/2" diameter brass cap stamped:

T29S R8W  
S16  
1/4 —.—  
S21  
1994  
PLS 1941

from which new bearing trees:

A 7" D. fir bears N.26°W., 30.9 ft. scribed "1/4 S16 BT".  
A 13" D. fir bears S.71°W., 20.1 ft. scribed "1/4 S21 BT".

and new bearing objects:

A 5/8"X30" iron rod with plastic cap "BTS ENG-SURV" bears S.26°E., 19.6 ft.  
A 5/8"X30" iron rod with plastic cap "BTS ENG-SURV" bears N.71°E., 25.1 ft.

and a monument not of record:

A 1" iron pipe bears S.10°50'52"E., 1.51 ft.

3. W 1/16 S16 S21

Set a 5/8"X30" iron rod, 28" in the ground with a 1 1/2" alum. cap stamped:

T29S R8W  
S16  
W 1/16 —.—  
S21  
1994  
PLS 1941

from which new bearing trees:

A 8" D. fir bears S.5°W., 27.6 ft. scribed "W 1/16 S21 BT".  
A 9" D. fir bears N.75°30'W., 25.5 ft. scribed "W1/16 S16 BT".

REGISTERED  
PROFESSIONAL  
LAND SURVEYOR

*Kristian O. DeGroot*

OREGON  
JULY 17 1981  
KRISTIAN O DEGROOT  
1941

EXPIRES 12/31/95

4. Section Corner S17|S16  
                          S20|S21

Found 1" galv. iron pipe by Byron in 1958 (Renewal #74),  
firmly set, projecting 10" above the ground with a 2 1/2"  
diameter brass cap stamped:

DOUGLAS COUNTY SURVEYORS OFFICE

S17|S16  
S20|S21

1958

CS 1975

from which original bearing trees by Hathorn in 1855:

A 14" fir snag bears N.85°E., 21.8 ft. with rotting opened face.

A 36" rotted fir stump bears S.28°E., 28.0 ft. (Rec. S.28°E.,  
42 lks.) with no scribing or discernable face found.

A 24" rotted fir stump bears S.58°W., 22.0 ft. (Rec. S.58°W.,  
33 lks.) with no scribing or discernable face found.

and bearing trees by Byron in 1958 (Renewal #74):

A 20" W.fir bears S.76°30'E., 30.6 ft. with healed single  
blaze.

A 8" yew bears S.64°W., 35.2 ft. with illegible scribing  
visible in partially healed blaze.

A 11" yew bears N.56°30'W., 49.1 ft. with illegible scribing  
visible in partially healed face.

A 5" uprooted and rotting hemlock bears N.16°E., 98.0 ft. to  
root hole. No scribing or discernable face found.

and a bearing tree by Langlitz in 1975 (Renewal #161):

A 15" D. fir bears N.26°E., 14.6 ft. with healed double blaze.

Corner lies on steep north slope ± 50' northeasterly of the  
end of gravel access road to building site.

5. N 1/16 S20|S21

Set a 5/8"x30" iron rod, 32" in the ground with 1 1/2" alum.  
cap stamped:

T29S R8W

N 1/16

S20 | S21

1994

PLS 1941

from which new bearing trees:

A 7" D. fir bears N.84°E., 23.5 ft. scribed "N 1/16 S21 BT".

A 6" D. fir bears N.28°W., 46.8 ft. scribed "N 1/16 S20 BT".

Corner lies in center of gravel access road and is set  
2" below grade.

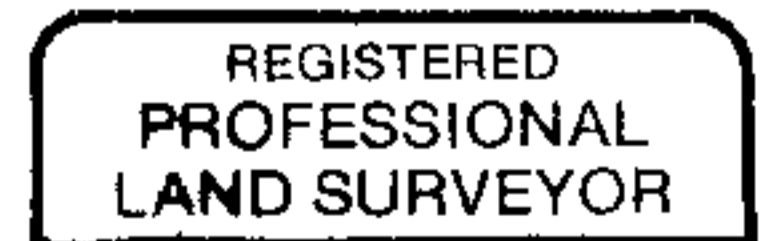
6. CWNW 1/64 S21

Set a 5/8"x30" iron rod, 29" in the ground, with plastic cap  
stamped "BTS ENG-SURV".

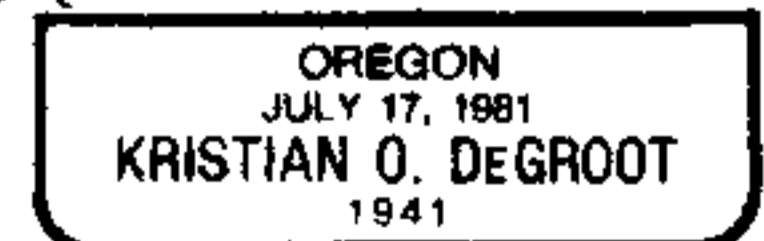
from which new bearing trees:

A 11" D.fir bears N.38°W., 6.5 ft. scribed "CWNW 1/64 S21 BT".

A 10" D.fir bears N.72°30'E., 16.9 ft. scribed "CWNW1/64 S21 BT".



*Kristian O. Degroot*



EXPIRES 12/31/95

7. NW 1/16 S21  
Set 5/8" X 30" iron rod 29" in the ground with a 1 1/2" alum. cap stamped:

T29S R8W  
NW 1/16  
•  
S21  
1994  
PLS 1941

from which new bearing trees:

- A 10" D. fir bears N.50°E., 24.2 ft. scribed "NW 1/16 S21 BT".  
A 8" W. fir bears N.15°W., 13.4 ft. scribed "NW 1/16 S21 BT".

8. CSNE 1/64 S21  
Set a 5/8"X30" iron rod, 28" in the ground with plastic cap "BTS ENG-SURV".

from which new bearing trees:

- A 8" D.fir bears N.4°30'E., 25.5 ft. scribed "CSNE1/64 S21 BT".  
A 8" D.fir bears S.37°E., 20.9 ft. scribed "CSNE 1/64 S21 BT".

9. CSN 1/64  
Set a 5/8"X30" iron rod, 28" in the ground with plastic cap "BTS ENG-SURV".

from which new bearing trees:

- A 11" W.fir bears N.57°E., 39.8 ft. scribed "CSN 1/64 S21 BT".  
A 9" D. fir bears N.12°W., 17.8 ft. scribed "CSN 1/64 S21 BT".

10. SWNW 1/64  
Set a 5/8"X30" iron rod, 28" in the ground with plastic cap "BTS ENG-SURV".

from which new bearing trees:

- A 10" D.fir bears N.15°30'W., 62.2 ft. scribed "SWNW1/64 S21 BT".  
A 11"D.fir bears N.70°30'W., 73.8 ft. scribed "SWNW 1/64 S21 BT".

11. 1/4 S20|S21  
Found 1" galv. iron pipe by Byron in 1962 (Renewal #197), firmly set, projecting 10" above the ground with a 2 1/2" diameter brass cap stamped:

DOUGLAS COUNTY SURVEYORS OFFICE

T29S R8W  
1/4 S20 | S21  
1962

from which an original bearing tree by Hathorn in 1855:

- A 34" fir stump bears S.20°E., 10.6 ft. (Rec. S.20°E., 16 lks.) with no face or scribing found.

and a bearing tree by Byron in 1954 (Renewal #42):

- A 26" fir bears N.79°E., 219.9 ft. with well healed single blaze.

and a bearing tree by Byron in 1962 (Renewal #197):

- A 32" cedar bears N.18°W., 207.2 ft. with well healed single blaze.

and bearing objects by Monrean in 1985 (Renewal #198):

- A "X" chiseled in top, east end of a 12" conc. tile culvert bears S.88°30'E., 27.0 ft.

REGISTERED  
PROFESSIONAL  
LAND SURVEYOR

*Kristian O DeGroot*

OREGON  
JULY 17 1981  
KRISTIAN O DEGROOT  
1941

EXPIRES 12/31/95

A utility pole 1 248 10 bears N.31°30'E., 37.9 ft.  
and a monument by Bloom per M100-35:  
A 5/8" iron rod with Plastic Cap "AA Surveying, Inc." bears  
S.0°09'07"E., 20.71 ft. (Rec. S.0°5'W., 25.00 ft.)

Corner lies on top of 3.3 ft. high cut bank along the south  
side of "Our Lane", a gravel drive, just east of a sharp  
curve on E. Camas Rd., a paved two lane highway.

12. CW 1/16 S21  
Set a 5/8"X30" iron rod, 26" in the ground with a 1 1/2" alum.  
cap stamped:

T29S R8W  
W 1/16  
C-----C  
S21  
1994  
PLS 1941

from which new bearing trees:

- A 11" W. fir bears N.81°E., 32.6 ft. scribed "CW 1/16 S21 BT".  
A 8" D.fir bears N.4°30'E., 44.2 ft. scribed "CW 1/16 S21 BT".  
A 5/8"X30" iron rod with plastic cap stamped "BTS ENG-SURV"  
bears N.0°14'49"W., 25.00 ft.

13. C 1/4 S21  
Set a 5/8"X30" iron rod 34" in the ground with a 2" diameter  
alum. cap stamped:

T29S R8W  
C 1/4 . S21  
1994  
PLS 1941

from which new bearing trees:

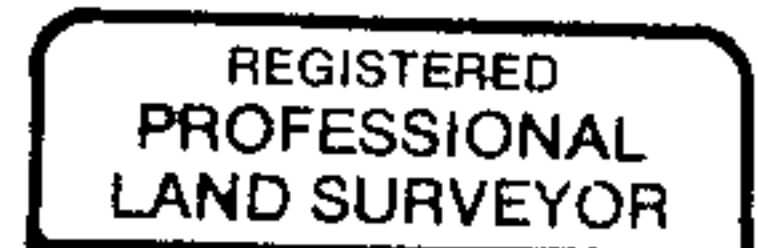
- A 8" D. fir bears N.6°30'W., 16.1 ft. scribed "C1/4 S21 BT".  
A 16" D. fir bears N.85°W., 36.9 ft. scribed "C1/4 S21 BT".  
and new bearing objects:  
A 5/8"X30" iron rod with plastic cap marked "BTS ENG-SURV"  
bears N.39°E., 34.4 ft.  
A 5/8"X30" iron rod with plastic cap marked "BTS ENG-SURV"  
bears S.6°30'E., 21.8 ft.

14. CE 1/16 S21  
Set a 5/8"X30" iron rod 26" in the ground with a 1 1/2"  
diameter alum. cap stamped:

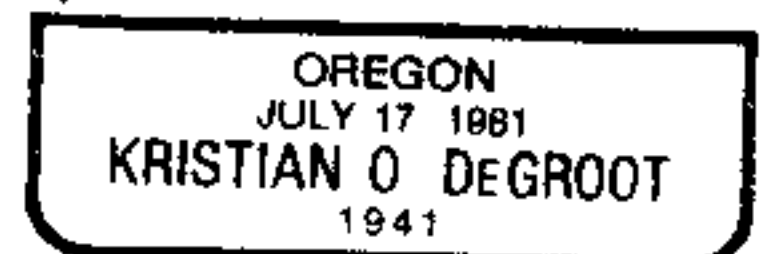
T29S R8W  
E 1/16  
C-----C  
S21  
1994  
PLS 1941

from which new bearing trees:

- A 18" D.fir bears S.38°30'E., 9.3 ft. scribed "CE1/16 S21 BT".  
A 9" D. fir bears N.79°E., 11.0 ft. scribed "CE 1/16 S21 BT".  
and a monument not of record:  
A 3/4" iron pipe bears S.48°28'50"W., 0.53 ft.



*Kristian O. Degroot*



EXPIRES 12/31/95

15. 1/4 S21|S22  
 Found 1" galv. iron pipe by Byron in 1958 (Renewal #85),  
 firmly set, projecting 4" above the ground with a 2 1/2"  
 diameter brass cap stamped:

DOUGLAS COUNTY SURVEYORS OFFICE

T29S R8W  
 1/4 S21 | S22  
 1958  
 RESET  
 1986

from which an original bearing tree by Hathorn in 1855:  
 A 30", high stumped, fir bears N.25°E., 12.7 ft. (Rec.N 25° E,  
 11.2 ft.) with scribing "1/4 S" visible in opened face.  
 (Note: facing S.54°W. and not at corner monument.)  
 and a bearing tree by Boyer in 1936 (Renewal #26):  
 A 36" fir stump bears N.40°W., 38.4 ft. (Rec. N.40°W., 36.5  
 ft.) with no scribing or discernable face found.  
 and bearing trees by Byron in 1958 (Renewal #85):  
 A 27" fir bears S.58°W., 33.8 ft. (Rec S.57°W., 33.8 ft.)  
 with healed double blaze.  
 A 22" cedar bears N.57°30'E., 20.8 ft. (Rec. N.59°E., 21.0 ft.)  
 with healed double blaze.  
 and a bearing tree by Monrean in 1986 (Renewal #199):  
 A 8" pine bears N.39°W., 28.9 ft. with healed double blaze.

Corner lies ± 25' north of old cat road.

16. 1/4 S21  
S28

Found 1" galv. iron pipe by Byron in 1971 (Renewal #155),  
 firmly set, projecting 6" above the ground with a 2 1/2"  
 diameter brass cap stamped:

DOUGLAS COUNTY SURVEYORS OFFICE

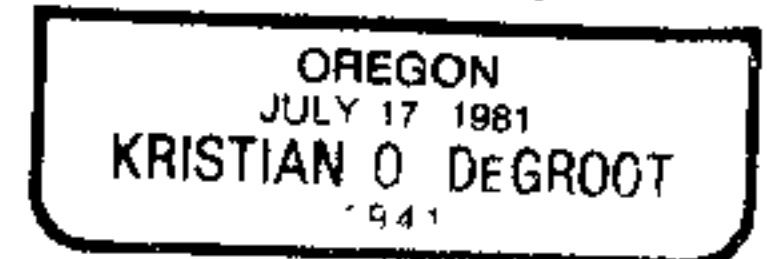
S21  
 1/4 —.—  
 S28  
 1971

from which an original bearing tree by Hathorn in 1855:  
 A 64" fir bears N.30°W., 28.4 ft. with no scribing found or  
 discernable face.  
 and a bearing tree by Boyer in 1958 per CS 54/38  
 (Renewal #155):  
 A 28" cedar bears S.31°W., 24.0 ft. with well healed single  
 blaze.

Corner lies in bottom of small draw running ± 40° W.



*Kristian O. DeGroot*



EXPIRES 12/31/95