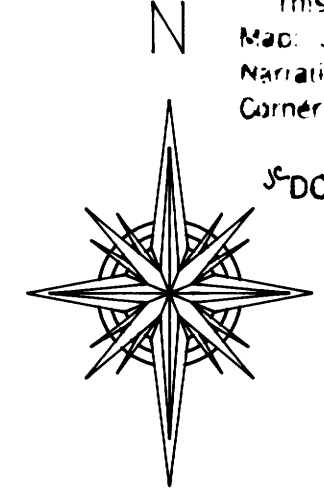


**PROPERTY SURVEY FOR
MENASHA CORPORATION
MOORE MILL and DOUGLAS COUNTY
LOCATED IN: SEC.21,T.22 S.,R.12 W.,W.M.**

FILED

Date: 1-23-95 By: JP
This survey consists of:
Map: M 121-32
Narrative:
Corner Rpt:



SCALE: 1" = 400'
NOVEMBER 1994

LEGEND

SURVEYED LINES
PAINTED & BLAZED LINES
FOUND CORNERS
CORNERS SET
CALCULATED CORNERS

FOUND 3 1/4" ALUMINIUM CAP ON
3/4" ALUMINIUM ROD, 3" ABOVE
GROUND WITH I.P. TIMBERLANDS
OPERATING CO. MARKINGS.
B.T.'S
36" CEDAR, N2°E, 35.7' (M115-4) VIS. SCRIBE
66" SPRUCE STUMP, N15°E, 28.7' TO CENTER (ORIG. M115-4 27.7' TO FACE)
16" DOUG. FIR, N62°E, 48.3' (M115-4, N61°E)
11" ALDER, S49°E, 22.4' (M115-4, S50°E, 22.3') B.S.
ROTTEN SPRUCE STUMP, S20°E, 40.9' (ORIG.) TO FACE
13" SPRUCE, S40°W, 6.1' (M115-4, S39°W, 6.2') VIS. SCRIBE
FENCE POST WITH MONUMENT SIGN BEARS
EAST 1.5'

FOUND SCRIBING ON ORIGINAL B.T. S85°E, 11.22' TO FACE
SET A 2"X30" I.P. WITH 2" BRASS CAP, 12" ABOVE GROUND
MARKED: T22S R12W, 1/4, S20 S21, 1994, LS2052
B.T.'S
14" CEDAR, N52.5°E, 25.9' SCRIBED 1/4S21BT
HEMLOCK SNAG, S85°E, 11.9' TO FACE (ORIG. SCRIBING VISIBLE)
33" HEMLOCK, S52.5°E, 40.7' SCRIBED 1/4S21BT
28" CEDAR, S3.75°W, 49.8' SCRIBED 1/4S20BT
23" ALDER, S82.5°W, 46.3' BARK SCRIBED 1/4S20BT

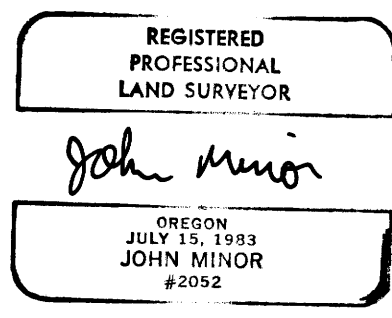
NARRATIVE

THE PURPOSE OF THIS SURVEY WAS TO ESTABLISH THE PROPERTY LINES OF MENASHA CORPORATION, MOORE MILL, AND DOUGLAS COUNTY IN SECTION 21, TOWNSHIP 22 SOUTH, RANGE 12 WEST. THE SECTION WAS SUBDIVIDED FOLLOWING THE 1973 BLM MANUAL OF INSTRUCTIONS. EQUIPMENT USED WAS A NIKON DTM A5 TOTAL STATION WITH DATA COLLECTOR AND TRIMBLE 4000ST GPS RECEIVERS. BASIS OF BEARING WAS DETERMINED FROM SOLAR OBSERVATIONS USING THE HOUR ANGLE METHOD. AT THE E1/16 BETWEEN SECTIONS 21 AND 28 A 1" IRON PIPE WAS FOUND, ORIGIN UNKNOWN AND UNRECORDED. THE PIPE BEING ABOUT 77' OUT OF POSITION IT WAS NOT ACCEPTED IN THIS SURVEY. ALL DISTANCES TO B.T.'S ESTABLISHED IN THIS SURVEY WERE TAKEN TO AN 8" SPIKE IN SIDE CENTER, UNLESS STATED OTHERWISE, AND BEARINGS TO THE CENTER OF THE TREE.

DOUGLAS CO. OFF. MGT. & FIN.
DOUGLAS CO. COURTHOUSE RM. 324
ROSEBURG, OR 97470
CONTRACT # 72874-1

MOORE MILL & LUMBER CO.
P.O. BOX 277
BANDON, OR 97411

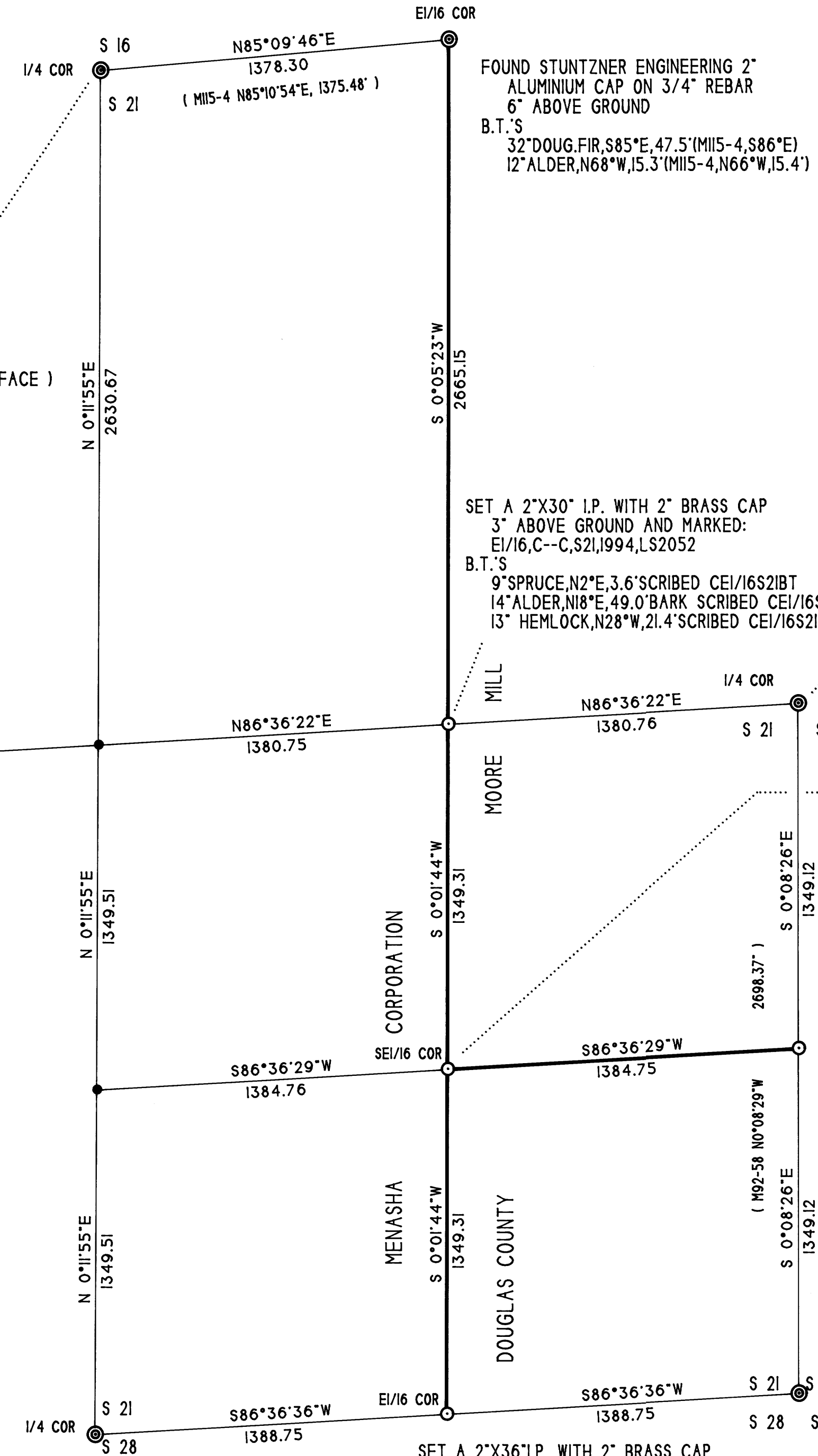
MENASHA CORPORATION
P.O. BOX 588
NORTH BEND, OR 97459



FOUND D.C.S. BRASS CAP, SET IN CONCRETE
ON SANDSTONE BLUFF (CS59/15)
B.T.'S
22" ALDER, N29°E, 37.0' BARK SCRIBED (CS59/15, N26°40'E, 34.0')
25" ALDER, S50°E, 35.5' BARK SCRIBED (CS59/15, S48°09'E, 32.0')
32" ALDER, S77°W, 49.3' FACE, (CS51/61, S79°W, 49.5')

SET A 2"X36" I.P. WITH 2" BRASS CAP
3" ABOVE GROUND AND MARKED:
E1/16, S21, S28, 1994, LS 2052
B.T.'S
26" DOUG. FIR, N77°E, 78.0' SCRIBED E1/16S21BT
24" ALDER, S64°W, 78.6' BARK SCRIBED E1/16S28BT
1" IRON PIPE, N75 1/2°W, 77.3' (UNKNOWN ORIGIN)
16" ALDER, N31°W, 69.9' BARK SCRIBED E1/16S21BT

FOUND D.C.S. 2 1/2" BRASS CAP ON 1 1/2" I.P.
12" ABOVE GROUND
B.T.'S
18" HEMLOCK, N33°E, 3.5' (CS51/61, N30°E)
ROTTEN SPRUCE STUMP, N44°E, 13.5' (ORIG. N41°E, 13.2')
13" SPRUCE STUMP, S65°E, 2.6' (CS 51/61, S68°E, 2.5')
43" DOUG. FIR, S17°E, 25.0' FACE (ORIG. S16.5°E, 25.1')
14" SPRUCE STUMP, S2°E, 5.6' (CS51/61, S2.5°E, 5.8')
15" SPRUCE STUMP, N80°W, 14.9' (CS51/61, 15.1')
THE TWO ORIGINAL B.T.'S TO THE WEST WERE PROBABLY
DESTROYED DURING ROAD CONSTRUCTION.



MAP FILE M 121-32

MAP FILE M 121-32

**COUNTY SURVEYORS FILE DATA
DO NOT REMOVE FROM OFFICE**

SURVEY BY: JOHN MINOR, LS 2052
P.O. BOX 588
NORTH BEND, OR. 97459

LICENSE RENEWAL 12-31-96