

"A" NORTH 1/4 CORNER SECTION 5

FD. 1965 DOUGLAS COUNTY IRON PIPE & BRASS CAP
16" HEM. STUMP, N16°W, 23.3' (SCAR VIS.), 1884 B.T.
24" FIR STUMP, S18°E, 19.0' (SCAR VIS.), 1884 B.T.
12" FIR, N47°W, 20.4' (SCAR VIS.), 1965 B.T.
12" CEDAR SNAG, S22°W, 19.2' (SCAR VIS.), 1965 B.T.
10" DOWNED FIR, S39°W, 5.3' (SCAR VIS.), 1967 B.T.
SET 8" FIR, S05°W, 36.6' (SCRIBED/METAL WASHER/PAINTED RED)

"H" EAST 1/4 CORNER SECTION 5

FD. 1994 DOUGLAS COUNTY IRON PIPE & BRASS CAP
24" DOWNED FIR, N75°W, 2.0' (SCRIBE VIS.), 1884 B.T.
8" FIR, N06°E, 12.8' (SCRIBE VIS.), 1994 B.T.
12" FIR, S71°E, 10.9' (SCRIBE VIS.), 1994 B.T.
12" FIR, N83°W, 13.5' (SCRIBE VIS.), 1994 B.T.
15" FIR, S30°W, 10.6' (SCRIBE VIS.), 1994 B.T.

"U" C.E. 1/16 CORNER SECTION 5

SET 5/8" x 30" IRON PIN WITH YELLOW PLASTIC CAP
8" FIR, S15°E, 38.9' (SCRIBED/METAL WASHER/PAINTED RED)
14" FIR, N53°E, 15.4' (SCRIBED/METAL WASHER/PAINTED RED)

"V" CENTER 1/4 CORNER SECTION 5

SET 5/8" x 30" IRON PIN WITH YELLOW PLASTIC CAP.
10" FIR, N25°E, 25.4' (SCRIBED/METAL WASHER/PAINTED RED)
12" FIR, S50°E, 26.8' (SCRIBED/METAL WASHER/PAINTED RED)
12" FIR, N45°W, 36.6' (SCRIBED/METAL WASHER/PAINTED RED)
16" FIR, S59°W, 36.6' (SCRIBED/METAL WASHER/PAINTED RED)

"W" C.W. 1/16 CORNER SECTION 5

SET 5/8" x 30" IRON PIN WITH YELLOW PLASTIC CAP.
12" FIR, N18°E, 23.4' (SCRIBED/METAL WASHER/PAINTED RED)
14" FIR, S47°E, 12.5' (SCRIBED/METAL WASHER/PAINTED RED)

"X" WEST 1/16 CORNER SECTIONS 5 AND 8

SET 5/8" x 30" IRON PIN WITH YELLOW PLASTIC CAP.
8" FIR, N79°W, 1.9' (SCRIBED/METAL WASHER/PAINTED RED)
12" HEM, S34°E, 10.1' (SCRIBED/METAL WASHER/PAINTED RED)

"Y" C.S. 1/16 CORNER SECTION 5

SET 5/8" x 30" IRON PIN WITH YELLOW PLASTIC CAP.
12" FIR, N59°E, 17.7' (SCRIBED/METAL WASHER/PAINTED RED)
14" FIR, S12°W, 20.9' (SCRIBED/METAL WASHER/PAINTED RED)

"Z" S.E. 1/16 CORNER SECTION 5

SET 5/8" x 30" IRON PIN WITH YELLOW PLASTIC CAP.
12" FIR, S48°W, 14.9' (SCRIBED/METAL WASHER/PAINTED RED)
14" FIR, S42°E, 13.0' (SCRIBED/METAL WASHER/PAINTED RED)

"B" WEST 1/4 CORNER SECTION 5

FD. 1962 DOUGLAS COUNTY IRON PIPE & BRASS CAP
26" FIR STUMP, N88°E, 43.8' (SCRIBE VIS.), 1884 B.T.
20" FIR, N66°W, 52.4' (SCAR VIS.), 1962 B.T.
24" FIR, N78°E, 40.2' (SCAR VIS.), 1962 B.T.

"C" SOUTH 1/16 CORNER SECTIONS 5 AND 6

FD. 1962 HAINES "T" IRON SET IN SURVEY M24-30
18" FIR, N28°W, 19.0' (SCAR VIS.), 1962 B.T.
24" CEDAR, S40°E, 28.3' (SCAR VIS.), 1962 B.T.

"D" S.W. CORNER SECTION 5

FD. 1957 HAINES "T" IRON SET IN SURVEY M5-31
22" FIR, S85°E, 24.5' (SCAR VIS.), 1957 B.T.
36" FIR, N49°E, 34.0' (BARK SCRIBE), 1957 B.T.
16" FIR STUMP, S31°W, 71.6' (SCAR VIS.), 1965 B.T.
20" HEMLOCK, N14°W, 64.5' (SCRIBE VIS.), 1965 B.T.
22" HEMLOCK, N24°E, 44.2' (SCAR VIS.), 1965 B.T.

"E" SOUTH 1/4 CORNER SECTION 5

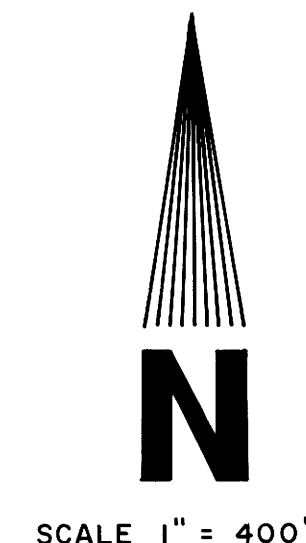
FD. 1958 HAINES "T" IRON SET IN SURVEY M7-66
16" FIR STUMP, S35°W, 25.4' (SCAR VIS.), 1958 B.T.
24" FIR STUMP, N25°E, 28.2' (SCAR VIS.), 1958 B.T.
SET 6" FIR, N12°W, 39.9' (SCRIBED/METAL WASHER/PAINTED RED)
12" ALDER, N69°W, 11.2' (BARK SCRIBED/METAL WASHER/PAINTED RED)

"F" EAST 1/16 CORNER SECTIONS 5 AND 8

FD. 1958 HAINES "T" IRON SET IN SURVEY M7-66.
50" FIR, S19°W, 40.3' (BARK SCRIBE), 1958 B.T.
52" FIR, N51°W, 11.6' (BARK SCRIBE), 1958 B.T.

"G" S.E. CORNER SECTION 5

FD. 1958 HAINES "T" IRON SET IN SURVEY M7-66
36" FIR STUMP, S34°W, 17.9' (SCAR VIS.), 1884 B.T.
12" HEM. STUMP, N16°E, 6.2' (SCRIBE VIS.), 1965 B.T.
14" HEM. STUMP, S09°E, 13.9' (SCRIBE VIS.), 1965 B.T.
16" HEM. STUMP, N35°E, 15.3' (SCAR VIS.), 1965 B.T.



SCALE 1" = 400'



Lee Roberts
L. D. ROBERTS
EXPIRES 12-31-96

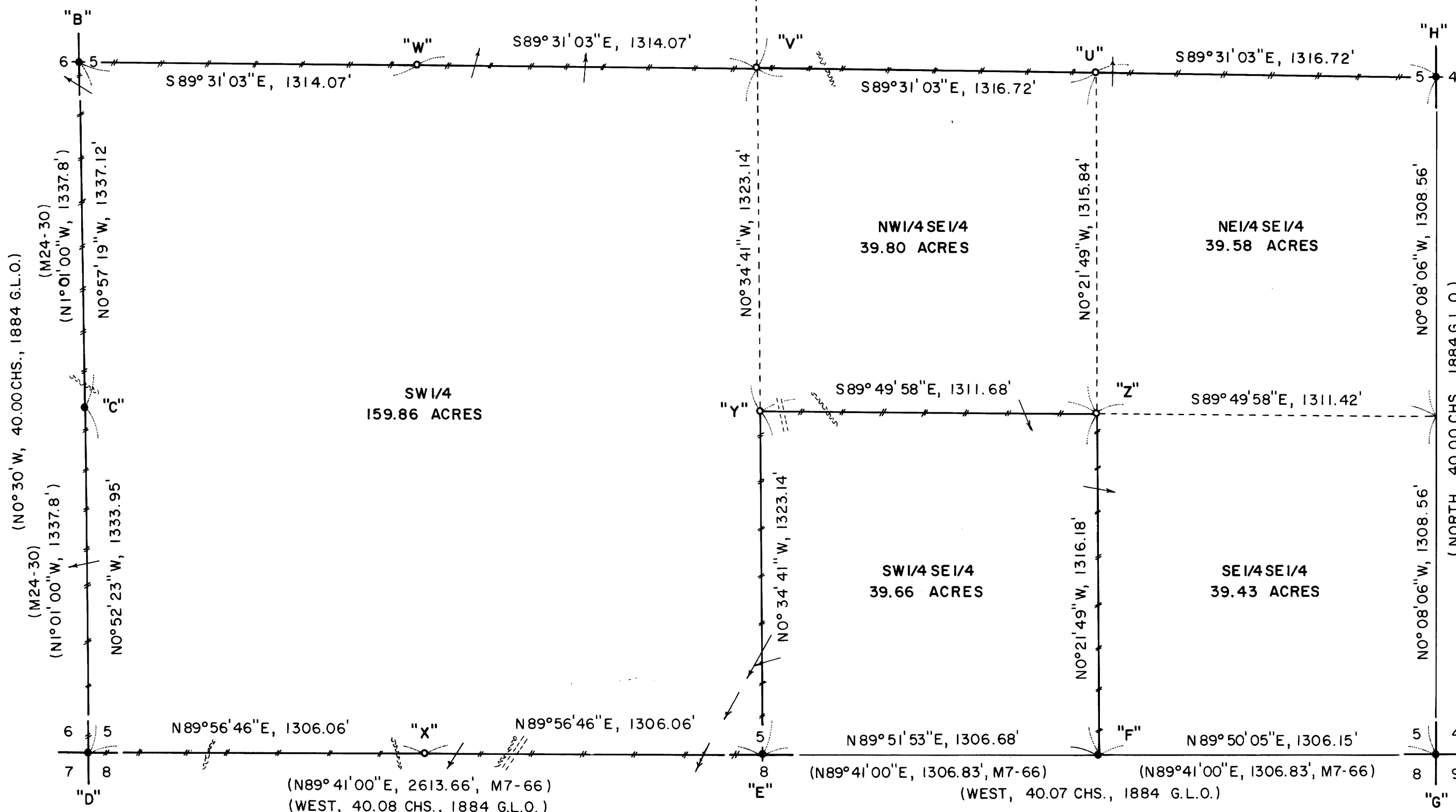
SURVEY OF
SECTION 5, T21S, R5W, W.M.
DOUGLAS COUNTY, OREGON
FOR
SENECA JONES TIMBER COMPANY
AND
GIUSTINA LAND AND TIMBER COMPANY
BY
ROBERTS SURVEYING INC.
29 WEST 29TH STREET
EUGENE, OREGON 97405
PHONE 345-1112

DECEMBER 15, 1994
SCALE 1" = 400'

LEGEND,

- MONUMENTS FOUND AND USED FOR CONTROL
- MONUMENTS SET, 5/8" x 30" IRON PINS WITH YELLOW PLASTIC CAPS. CAPS STAMPED "ROBERTS P.L.S. 1039"
- METAL FENCE POSTS
- () DATA OF RECORD, 1884 G.L.O. SURVEY; DOUGLAS COUNTY SURVEYS M7-66 AND M24-30.
- BASIS OF BEARING, SOLAR OBSERVATION
- DISTANCES TO BEARING TREES ARE CENTER MEASURE
- ALL NEW B.T.'S ARE SCRIBED AND HAVE A METAL WASHER STAMPED "P.L.S. 1039" NAILED TO LOWER BLAZE. SCRIBED BLAZES ARE PAINTED RED.

NARRATIVE, THE PURPOSE OF THIS SURVEY IS TO BLAZE AND POST THE FOLLOWING PROPERTY LINES. 1) THE EAST-WEST CENTERLINE OF SECTION 5. 2) THE WEST AND SOUTH BOUNDARIES OF THE SW1/4 OF SECTION 5. 3) THE WEST, NORTH AND EAST BOUNDARIES OF THE SW1/4SE1/4 OF SECTION 5. ALSO THE FOLLOWING PROPERTY CORNERS WERE SET IN THIS SURVEY. 1) THE C.E. 1/16 CORNER 2) THE CENTER 1/4 CORNER 3) THE C.W. 1/16 CORNER 4) THE WEST 1/16 CORNER, SOUTH LINE SECTION 5. 5) THE C.S. 1/16 CORNER AND 6) THE S.E. 1/16 CORNER SECTION 5. THE NORTH 1/4 CORNER, THE WEST 1/4 CORNER, THE SOUTH 1/16 CORNER ON THE WEST LINE, THE S.W. SECTION CORNER, THE SOUTH 1/4 CORNER, THE EAST 1/16 CORNER ON THE SOUTH LINE, THE S.E. SECTION CORNER AND THE EAST 1/4 CORNER WERE FOUND IN THE FIELD AND USED AS CONTROL FOR THIS SURVEY. A SERIES OF CLOSED RANDOM E.D.M. CONTROL TRAVERSES, USING A WILD T-16 THEODOLITE AND A DI-4L E.D.M., WERE RUN BETWEEN THE CONTROLLING CORNERS FOUND IN THE FIELD. SECTION 5 WAS THEN SUBDIVIDED ACCORDING TO THE B.L.M. MANUAL OF INSTRUCTION FOR THE SURVEY OF THE PUBLIC LANDS OF THE UNITED STATES. A CLOSED RANDOM PROPERTY LINE TRAVERSE, USING A WILD T-16 THEODOLITE AND A DI-4L E.D.M., WAS RUN ALONG ALL BOUNDARIES TO BE BLAZED AND POSTED. OFFSETS WERE COMPUTED FROM THIS RANDOM PROPERTY LINE TRAVERSE TO THE TRUE PROPERTY LINE. PROPERTY LINES WERE MARKED WITH RED PAINTED BLAZES, RED PLASTIC RIBBON AND RED METAL FENCE POSTS. MONUMENT "V", THE CENTER 1/4 CORNER, WAS SET AT THE POINT OF INTERSECTION OF THE NORTH-SOUTH AND EAST-WEST CENTERLINES OF SAID SECTION 5. MONUMENT "U", THE C.E. 1/16 CORNER, WAS SET HALFWAY BETWEEN THE FOUND EAST 1/4 CORNER AND THE CENTER 1/4 CORNER. MONUMENT "W", THE C.W. 1/16 CORNER, WAS SET HALFWAY BETWEEN THE FOUND WEST 1/4 CORNER AND THE CENTER 1/4 CORNER. MONUMENT "X", THE WEST 1/16 CORNER ON THE SOUTH LINE OF SECTION 5, WAS SET HALFWAY BETWEEN THE FOUND S.W. SECTION CORNER AND THE FOUND SOUTH 1/4 CORNER. MONUMENT "Y", THE C.S. 1/16 CORNER, WAS SET HALFWAY BETWEEN THE FOUND SOUTH 1/4 CORNER AND THE CENTER 1/4 CORNER. MONUMENT "Z", THE S.E. 1/16 CORNER, WAS SET AT THE POINT OF INTERSECTION OF THE NORTH-SOUTH AND EAST-WEST CENTERLINES OF SAID S.E. 1/4.



COUNTY SURVEYORS FILE DATA
DO NOT REMOVE FROM OFFICE

MAP FILE M121-30

MAP FILE M121-30