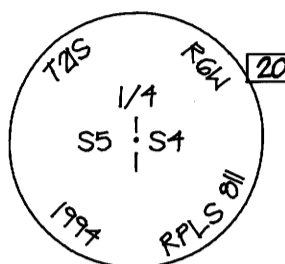


FILED

Date: 12/29/94 By: JP  
This survey consists of: 2 sheets.  
Map: M 121-24 A&B  
Narrative:  
Corner Rpt:

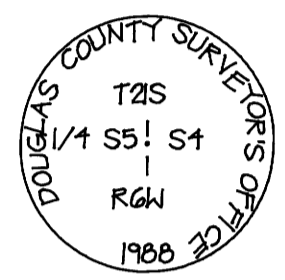
DOUGLAS COUNTY  
SURVEYOR 8c

CORNER INFORMATION



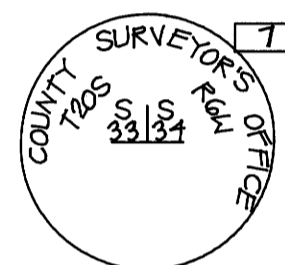
202 WEST 1/4 CORNER SECTION 4

SET: 2" x 3/8" iron pipe with 2 1/2" brass cap cemented to the top.  
BT'S MARKED:  
24" D. fir, N 30° 35' E 29.0 to center, 28.95 to "W" nail, scribed "1/4 S4 BT".  
24" D. fir, N 86° 41' W 32.8 to center, 31.97 to "W" nail, scribed "1/4 S5 BT".  
FD: 2 1/2" DCSO brass cap on 1 1/2" iron pipe N 8° 45' 35" E 4.77 from set monument. Found 5/8" iron rod with yellow plastic cap marked "Marx + Assoc." on the north side of the DCSO monument.  
BT'S FD. from the set monument:  
10" W. hemlock, N 44° 06' W 24.7, two healed faces.  
24" D. fir, S 19° 44' W 7.6, two healed faces.  
6" D. fir, N 36° 24' E 26.8, two small partially healed faces, some scribing visible.  
8" D. fir, N 73° 06' E 37.6, two healed faces.



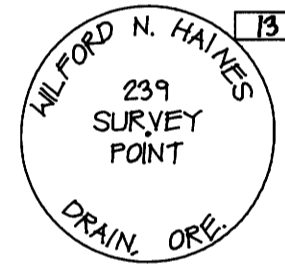
7 SOUTHEAST CORNER SECTION 33

FD: 2 1/2" DCSO brass cap on 1 1/2" iron pipe.  
BT'S FD:  
54" D. fir, N 80° W 38.0 +, large face partially opened no marks visible. (no record)  
38" D. fir, N 29 1/2° W 25.0 +, two large healed faces. (N 25° W 35.1)



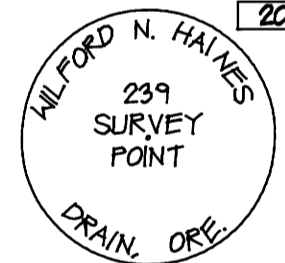
13 SOUTHWEST CORNER SECTION 33

FD: 1" "T" iron with 1" brass washer.  
BT'S FD:  
7" D. fir snag, N 15° 45' E 13.3, face healed. (N 16° E 13.3)  
13" D. fir, S 53° 06' W 9.0, face healed. (S 55° W 9.4)  
13" D. fir, N 32° 27' W 15.8, face healed. (N 35° W 16.0)



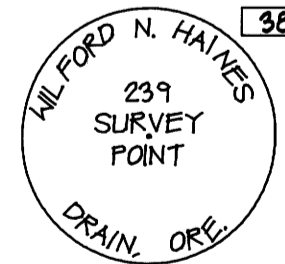
20 NORTHWEST CORNER SECTION 4

FD: 1" "T" iron with 1" brass washer.  
BT'S FD:  
10" D. fir, S 75° 55' E 8.5, two small healed faces. (S 77° E 8.5)  
25" D. fir, S 3° 35' E 103.2, face healed. (S 4° 3/4' E 103.3)  
32" D. fir, S 7° 45' W 15.5, face healed. (S 80° W 15.3)  
This corner monument is S 0° 10' 04" E 0.31 from the true intersection point.



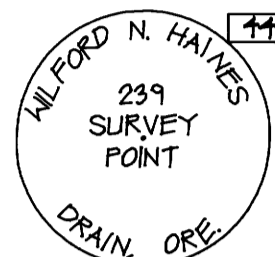
30 SOUTH 1/4 CORNER SECTION 33

FD: 1" "T" iron with 1" brass washer.  
BT'S FD:  
35" D. fir, N 3° 45' E 24.8, face healed. (N 4° E 25.2)  
32" D. fir, N 53° 06' E 45.0, face healed. (N 55° E 45.2)



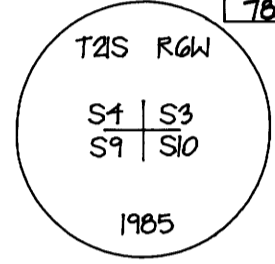
71 NORTH 1/4 CORNER SECTION 4

FD: 1" "T" iron with 1" brass washer.  
BT'S FD:  
35" D. fir, N 77° 10' E 13.9, face healed. (N 75° E 13.8)  
28" D. fir, N 56° 40' W 16.7, face healed. (N 55° W 17.1)  
This corner monument is S 0° 11' 59" E 1.54 from the true intersection point.



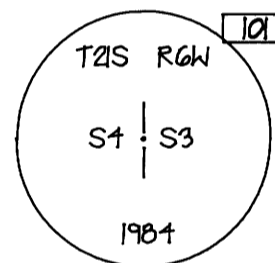
78 SOUTHEAST CORNER SECTION 4

FD: 3 1/4" BLM brass cap on 2 1/2" stainless steel post.  
BT'S FD:  
36" D. fir snag, N 8° 14' E 33.5, axe work to open face, half the circumference of the snag has split off and is on the ground. (N 10° E 5) lks.)  
12" D. fir, N 9° 11' E 28.1, face healed. (N 9 1/2° E 43 lks.)  
2" D. fir, S 23° 22' E 27.5, face healed. (S 23° E 42 lks.)  
42" D. fir, S 39° 02' W 45.7, face healed. (S 39° W 68 lks.)  
34" D. fir, N 3° 01' W 58.2, face healed. (N 3° W 89 lks.)



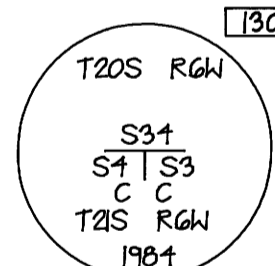
10 EAST 1/4 CORNER SECTION 4

FD: 3 1/4" BLM brass cap on 2 1/2" iron post.  
BT'S FD:  
4" D. fir snag, N 49° 54' E 4.8, two small partially healed blazes, partial scribing visible. (N 52° E 7 1/2 lks.)  
26" D. fir stump remains, S 78° 13' E 62, no evidence of face remains. (S 78° E 10 lks.)  
29" D. fir stump, S 84° 28' W 4.4, possible healed face, rotted top. (S 80° W 5 lks.)  
12" D. fir, N 2° 28' W 9.1, face healed. (N 0 1/2° W 14 lks.)  
45" D. fir snag, S 53° 07' E 51.3, bark scribe "1/4 S3 BT", 1" brass washer nailed on face. (S 55° E 74 lks.)



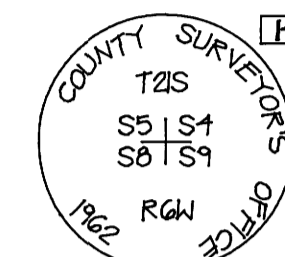
130 NORTHEAST CORNER SECTION 4

FD: 3 1/4" BLM brass cap on 2 1/4" iron post.  
BT'S FD:  
53" D. fir, N 51° 16' E 15.6, healed face, face points to the Haines monument.  
6" D. fir snag, S 43° 08' E 4.9, two small healed blazes, lower blaze has been damaged by beaver. (S 43° E 63 lks.)  
34" D. fir stump, S 29° 17' W 38.8, face opened, partial scribing visible, rest of face is burned.  
20" D. fir, S 10° 26' W 31.0, healed face. (S 4 1/2° W 58 lks.)  
12" D. fir, N 37° 09' W 10.6, healed face. (no record)  
FD: 1" "T" iron with 1" brass washer, N 1° 07' 23" W 17.53 from BLM monument. (N 0° 34' W 0.265 ch.)



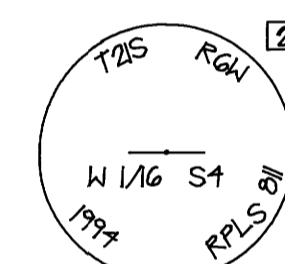
203 CENTER 1/4 CORNER SECTION 4

FD: 2 1/2" DCSO brass cap on 1 1/4" iron post  
BT'S FD:  
53" D. fir snag, N 65° 21' E 29.0, face has been opened with a saw, sawn portion of face has been replaced and is now healed. (N 64° E 29.0)  
35" D. fir snag, N 80° 19' E 36.8, healed face. (N 80° E 36.8)  
50" D. fir snag, S 73° 42' E 28.7, healed face. (N 74° E 28.4)  
18" R. alder, S 31° 20' W 18.8, bark scribed "T2S R6W S8 BT", (S 30° E 19.1)  
35" D. fir stub 15" tall, N 20° 27' W 20.3, axe work visible on pitch seam. (N 2° W 20.2)  
32" D. fir, N 2° 00' W 63.4, face healed. (N 3 1/2° W 62.9)



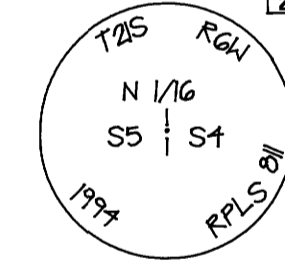
204 WEST 1/16 CORNER SECTION 4 ONLY

SET: 2 3/4" brass cap cemented on 2" x 10" iron pipe.  
BT'S MARKED:  
14" D. fir, N 74° 51' E 43.3 to center, no distance measured to "W" nail, scribed "C1/4 S4 BT".  
11" W. hemlock, N 21° 24' E 34.3 to center, 33.8 to "W" nail, scribed "C1/4 S4 BT".  
18" D. fir, N 34° 46' W 12.6 to center, 11.76 to "W" nail, scribed "C1/4 S4 BT".



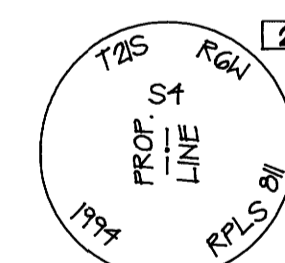
205 NORTH 1/16 CORNER SECTIONS 4 & 5

SET: 2 3/4" brass cap cemented on 2" x 4" iron pipe.  
BT'S MARKED:  
9" R. alder, N 22° 11' E 38.5 to center, 38.17 to "W" nail, bark scribed "N 1/16 S4 BT".  
10" R. alder, N 75° 47' W 25.7 to center, 25.30 to "W" nail, bark scribed "N 1/16 S5 BT".



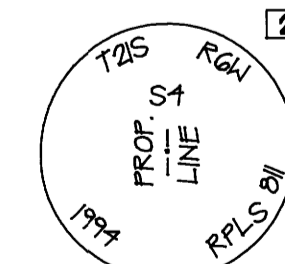
206 PROPERTY LINE MONUMENT ON N-S CENTERLINE SECTION 4

SET: 2 3/4" brass cap cemented on 2" x 4" iron pipe.  
BT'S MARKED:  
19" D. fir, S 21° W 75.8 to center, 74.84 to "W" nail, scribed "PL S4 BT".



207 PROPERTY LINE MONUMENT ON N-S CENTERLINE SECTION 4

SET: 2 3/4" brass cap cemented on 2" x 10" iron pipe.  
BT'S MARKED:  
20" R. alder, N 43° 34' W 24.3 to center, 23.61 to "W" nail, bark scribed "PL S4 BT".  
20" D. fir, S 65° 01' W 35.6 to center, 34.57 to "W" nail, scribed "PL S4 BT".



REGISTERED PROFESSIONAL LAND SURVEYOR  
STEVEN P. NESS  
JULY 14, 1987  
RENEWAL DATE: DEC. 31, 1994

SURVEY FOR  
WEYERHAEUSER COMPANY  
IN  
N 1/4, SECTION 4, T2S, R6W, W1/16,  
DOUGLAS COUNTY, OREGON  
Map and Tax Lot Number: 216 & TL-800 & 900

FORD-NESS-FASSBENDER  
LAND SURVEYING  
CONSTRUCTION SUPERVISION \* WATER RIGHTS EXAMINATIONS  
1120 Bailey Hill Rd., No. 1  
Eugene, OR 97402  
(503) 344-1852  
Fax (503) 344-9923

SHEET NO. 2  
OF 2  
JOB NO. SR2449

COUNTY SURVEYORS FILE DATA  
DO NOT REMOVE FROM OFFICE