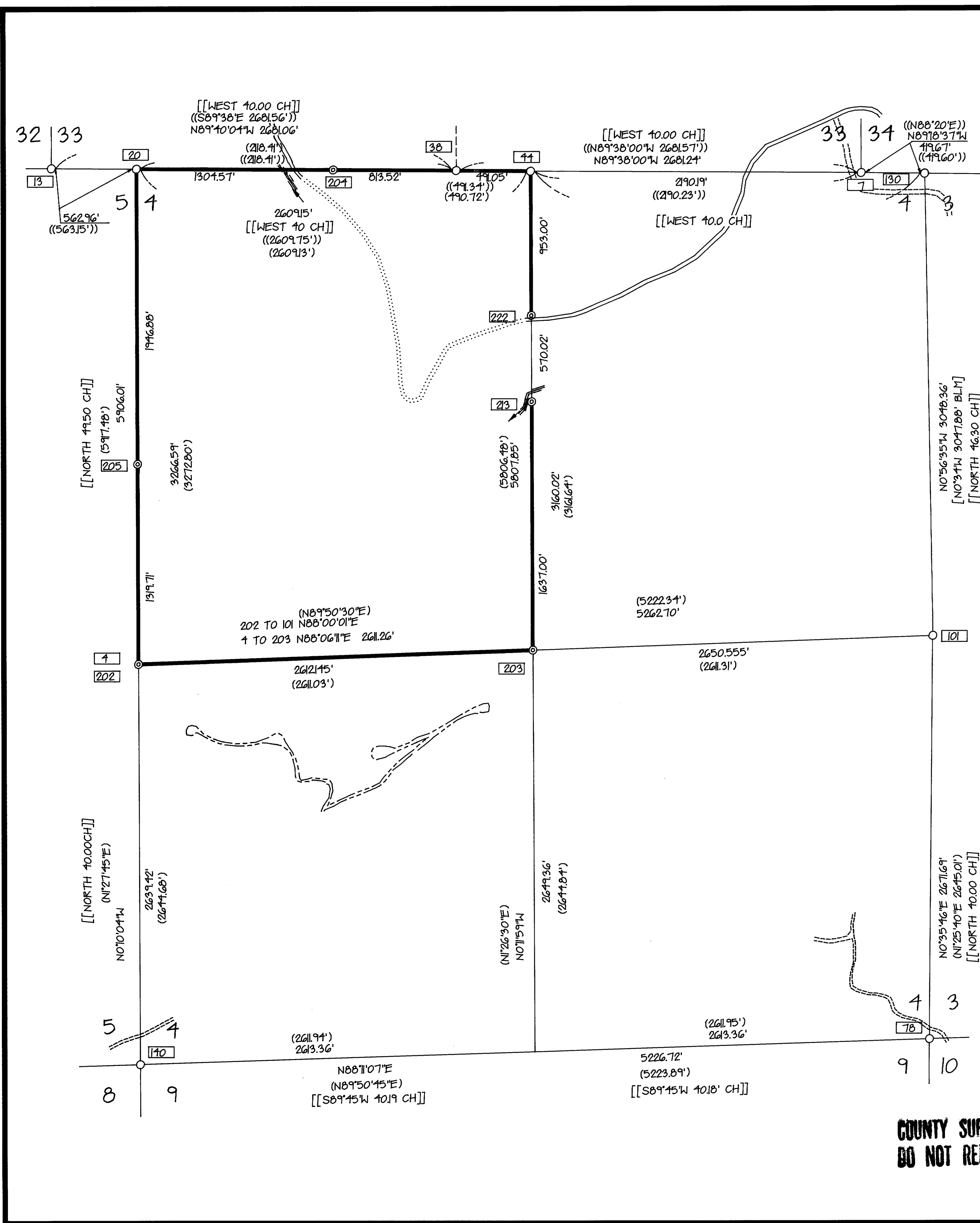
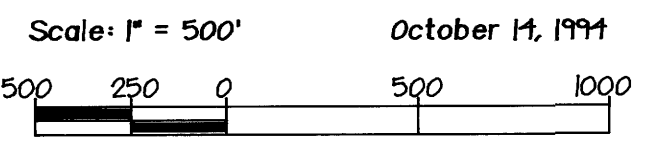


MAP FILE M 121-24-A



COUNTY SURVEYORS FILE DATA
DO NOT REMOVE FROM OFFICE



- REFERENCES
1. C.S.F. # M3-23
 2. C.S.F. # M32-34
 3. C.S.F. # M105-15

- LEGEND
- Monument found as described.....
 - Monument set as described.....
 - in corner information.....
 - Line marked with red painted blazes and orange glo flagging.....
 - Corner number.....
 - Paved road.....
 - Dirt road.....
 - Smith River.....
 - BLM..... Bureau of Land Management
 - DCSO..... Douglas County Surveyor's Office
 - GLO..... Government Land Office
 - Record data per Haines M3-23, M32-34..... ()
 - Record data per 1988 Marx & Assoc M105-15..... ()
 - Record data per 1984 BLM..... []
 - Record data per 1884 GLO..... []

NARRATIVE

This survey was performed at the request of the Weyerhaeuser Company to monument and mark a portion of the boundary lines of the company ownership in Section 4, as shown. All the necessary controlling corners, that we could find, were tied in a closed traverse scheme. The section was then subdivided according to the 1973 Manual of Survey Instructions.

An extensive search was made for all missing government corners, that is the West 1/4 corner, the Northwest corner, the North 1/4 corner and particularly the South 1/4 corner of Section 4. This effort proved fruitless, so the previously proportioned corner positions at the Northwest and the North 1/4 corners were accepted in this survey. We also searched for evidence at the Southwest corner and the South 1/4 corner of Section 33, T.20S., R.6 W., and after finding none, accepted these proportioned positions. At the West 1/4 corner of Section 4, we found the proportioned position established in survey M105-15 to be in error. We determined a proportioned position about 5 feet south of the position from M105-15 and which position was re-monumented by the Douglas County Surveyor's Office. As this difference exceeds what I feel to be acceptable accuracy limits, I decided to monument our proportioned position for the West 1/4 corner. The procedure I used was to proportion our distance to the monument at the northwest corner of Section 4 not the intersection point, to the 1884 GLO record distance. That is 5905.71 feet to 89.50 chains (5907.00 feet) not the 5906.01 feet to the intersection with the South line of Section 33. So our proportion would be $\frac{5905.71}{(5907.00)} = \frac{2639.42}{(2640.00)}$ As mentioned above, I did make

an extensive search for the South 1/4 corner of Section 4. The original 1884 GLO survey notes called for a post and a marked stone at the corner position and two 36" firs as accessories. Also, the original notes placed the corner 132 chains east of a ridge top. From 1967 Weyerhaeuser aerial photos, I determined a search area, but could find no evidence of the post or stone nor a pattern of old stumps, or stump holes, that would fit the original calls to the 36" firs. This area had been logged some 50 to 80 years ago, so chances of finding the post or stone would be remote. However, evidence of the firs should still remain. In comparing the topo calls from the 1884 notes to the aerial photos, the west 1/2 mile is almost identical to the photos, but the east 1/2 mile topo calls miss two ridge crossings and a main draw. It is possible that this corner was "stubbed" and thus could be out of position in latitude. It is also possible that the corner was never set or that it was destroyed by logging as there is evidence of a "swing road" used for logging about 100 feet to the west of my search area. A search was also made, with hand compass and steel tape, from our closest traverse point for the CW 1/16 corner set in C.S.F. #M105-15. Because of heavy logging debris and brush, we were unable to locate the monument, assuming it was not destroyed by logging.

Because Township 20 South closed on the previously surveyed Township 20 South, closing corners were established along the north line of Section 4 in the original 1884 survey. In 1956 Wilford Haines, in survey M3-23, proportioned several miles along the line between these two townships. In theory he placed all the corners he proportioned on a straight line, so the closing corners of Section 4 would be on the south lines of Sections 33 and 34. As shown on the plat, the closing corners of Section 4 are not precisely on the line, which is to be expected. I treated the north corners of Section 4 as closing corners and held the south line of Section 33 as controlling. Therefore the bearings and distances along the line between Sections 33 and 4 are to the intersection points from the corner monuments that apply to Section 4. Also the west line, and the north-south center-line of Section 4 terminate at the intersection with the south line Section 33 and not the appropriate Section 4 corner monuments. See the corner information sheet for the ties from Section 4 corner monuments to the intersection points. The exception is the distance north along the east line of Section 4 to the NE corner from the east 1/4 corner, as it was beyond the scope of this survey to determine the direction of the line east from the SE corner of Section 33.

The basis of bearing for this survey is the line between the South 1/4 corner (#38) and the Southeast corner (#7) of Section 33 as being S 89° 38' E as surveyed by Wilford Haines in survey M3-23.

FILED
Date: 12/29/94 By: JP
This survey consists of: 2 sheets.
Map: M 121-24 A+B
Narrative: _____
Corner: _____

DOUGLAS COUNTY
BC SURVEYOR BC

REGISTERED
PROFESSIONAL
LAND SURVEYOR
Steven P. Ness
OREGON
JULY 14, 1987
STEVEN P. NESS
RIT
RENEWAL DATE: DEC. 31, 1994

SURVEY FOR
WEYERHAEUSER COMPANY

IN
N.W. 1/4, SECTION 4, T.21 S., R.6 W., W.1.
DOUGLAS COUNTY, OREGON
Map and Tax Lot Number: 2 & 4 TL-800 & 900

FORD-NESS-FASSBENDER

LAND SURVEYING
CONSTRUCTION SUPERVISION * WATER RIGHTS EXAMINATIONS
1120 Bailey Hill Rd., No. 1 (503) 344-1852
Eugene, OR 97402 Fax (503) 344-9923

SHEET NO. 1
OF 2
JOB NO. SR299

MAP FILE M 121-24-A