

NARRATIVE

THE PURPOSE OF THIS SURVEY WAS TO MARK SOME OF THE PROPERTY LINES BETWEEN SENECA JONES TIMBER CO. AND ADJOINING LANDOWNERS IN SECTIONS 31 AND 32, T21S, R5W, W.M., DOUGLAS COUNTY, OREGON. ALSO THE 1/4 CORNER COMMON TO SECTIONS 31 & 6, WAS SET AT PROPORTIONATE DISTANCE IN ACCORDANCE WITH THE BLM MANUAL OF SURVEYING INSTRUCTIONS 1973, AFTER AN EXTENSIVE SEARCH FAILED TO UNCOVER THE ORIGINAL CORNER BEARING TREES SET IN THE 1855 GLO SURVEY. THE CS 1/16 OF SECTION 31 AND THE S 1/16 CORNER BETWEEN SECTIONS 31/32 WERE ALSO SET AS PER THE BLM MANUAL. THE TWO SOUTHERLY PINS OF DOUGLAS COUNTY DEED RECORDS, BOOK 1061, PAGE 424 WERE SET AS PER THE DEED DESCRIPTION IN SECTION 32 HOLDING THE C1/4 AND THE CW 1/16 CORNERS AS SET BY WILLIAMS IN CS M97-48, THE S 1/4 OF SECTION 32, AND USING THE SW SECTION CORNER OF SECTION 32 TO PROPORTION IN THE W 1/16 CORNER OF SECTIONS 32/5. THE E 1/16 CORNER BETWEEN SECTIONS 32/5 WAS HELD AS SET IN VOLUME 3, PAGE 176, AS REFERENCED FROM FIELD BOOK #64, PAGES 2-3, DOUGLAS COUNTY RECORDS. A NIKON NTD-4 THEODOLITE WITH DISTANCE METER WAS USED TO MEASURE ANGLES AND DISTANCES. BEARING TREES REFERENCED ON THIS SURVEY WERE MEASURED WITH A HAND COMPASS AND 50' DIAMETER TAPE. BEARINGS ARE BASED ON THE SOUTH LINE BETWEEN SECTIONS 31 AND 6 OF PEEL BAKER SURVEY M114-60, 1992.

CORNER NOTES

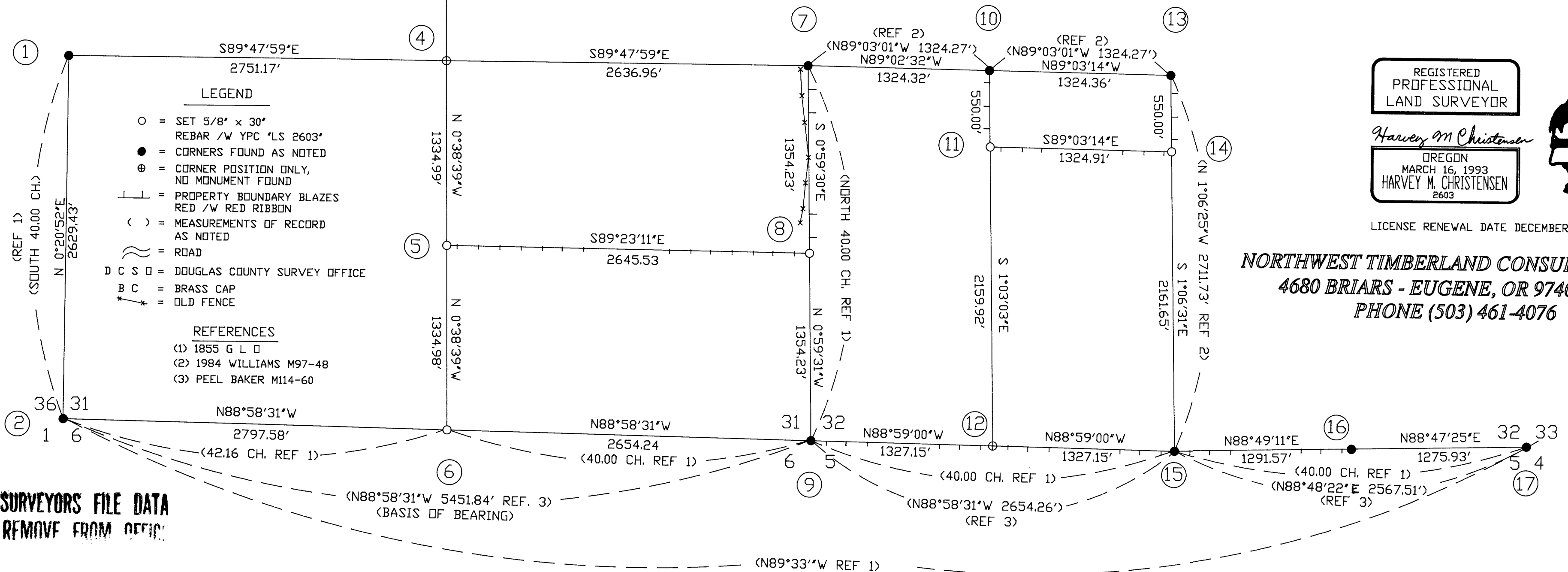
- (1) 1/4 CORNER SECTION 36/31 FOUND: 1961 D C S O 2 1/2" B C BTS: 6" W. OAK, N20W, 19.1 FT., HEALED FACE 8" W. OAK, S62E, 4.9 FT., SNAG, SCRIBING VISIBLE 24" W. OAK, N79W, 69.1 FT., HEALED FACE, SNAG 30" W. OAK, (S51E, 106.9 FT.), DOWN, ROTTED, OUT OF POSITION
(2) SECTION CORNER 36-31/1-6 FOUND: 1990 D C S O 2 1/2" B C BTS: 23" D. FIR, N70E, 56.5 FT., HEALED FACE 48" D. FIR, S23E, 30.7 FT., HEALED FACE 40" W. OAK, S7E, 97.5 FT., HEALED FACE 15" W. OAK, S27W, 18.7 FT., HEALED FACE 11" W. OAK, N2W, 9.9 FT., HEALED FACE
(3) 1/4 CORNER SECTION 30/31 FOUND: 1990 D C S O 2 1/2" B C BTS: 6" D. FIR, N40E, 17.3 FT., HEALED FACE 10" D. FIR, S46E, 3.1 FT., 24" W. OAK, (N44W, 19.8 FT.), DOWN & ROTTED 10" W. OAK, S66E, 38.3 FT., DEAD, HEALED FACE
(4) CENTER 1/4 CORNER SECTION 31 CALCULATED POSITION ONLY (INTERSECTION) - NO CORNER SET
(5) CS 1/16 CORNER SECTION 31 SET: 5/8" X 30" REBAR /W YPC "LS 2603" BTS: 10" D. FIR, N37E, 16.0 FT., BLAZED & SCRIBED "CS 1/16 S31 BT" 11" D. FIR, S08E, 10.0 FT.,
(6) 1/4 SECTION CORNER 31/6 SET: 5/8" X 30" REBAR /W YPC "LS 2603" BTS: 18" D. FIR, N25W, 7.7 FT., BLAZED & SCRIBED "S 1/4 SEC 31 BT" 12" D. FIR, N46E, 13.1 FT., 9" D. FIR, S53E, 15.8 FT., 13" D. FIR, S15W, 32.7 FT., "N 1/4 SEC 6 BT"
(7) 1/4 SECTION CORNER 31/32 FOUND: 2.5" BC 1964 D C S O BTS: 26" MADRONE, N12E, 35.3 FT., HEALED FACE 16" D. FIR, N49E, 24.8 FT.,
(8) S 1/16 CORNER SECTION 31/32 SET: 5/8" X 30" REBAR /W YPC "LS 2603" BTS: 19" D. FIR, N14W, 21.6 FT., BLAZED & SCRIBED "S 1/16 SEC 31 BT" 18" D. FIR, N66E, 11.9 FT., "S 1/16 SEC 32 BT"
(9) SECTION CORNER 31-32/6-5 FOUND: 2.5" BC "PLS 752 1992" BTS: 22" I. CEDAR, N48E, 24.3 FT., HEALED FACE 26" D. FIR, S61E, 19.7 FT., 8" D. FIR, S8W, 38.5 FT., HEALED FACE 11" D. FIR, N86W, 13.1 FT.,
(10) CW 1/16 CORNER SECTION 32 FOUND: 1.0" IP /W YPC "WEYER CO" BTS: 18" D. FIR, S29W, 9.3 FT., HEALED FACE 18" D. FIR STUMP, S45E, 7.2 FT., HEALED FACE
(11) PROPERTY CORNER SET: 5/8" X 30" REBAR /W YPC "LS 2603"
(12) S 1/16 CORNER SECTION 32/5 CALCULATED POSITION ONLY (PROPORTIONED) - NO CORNER SET
(13) C 1/4 CORNER SECTION 32 FOUND: 1" IP /W YPC "WEYER CO" SET 5 1/2" STEEL FENCE POST 1' SOUTH BTS: 38" D. FIR, N65W, 40.3 FT., HEALED FACE 22" W. FIR, S43W, 57.3 FT., OPEN FACE
(14) PROPERTY CORNER SET: 5/8" X 30" REBAR /W YPC "LS 2603"
(15) 1/4 CORNER SECTION 32/5 FOUND: 1959 D C S O 2 1/2" B C BTS: 19" MADRONE, S50E, 44.8 FT., NO MARKS VISIBLE 19" D. FIR, S69E, 70.4 FT., 38" D. FIR, (N7E, 19.4 FT.), DOWN, OUT OF POSITION
(16) E 1/16 CORNER 32/5 FOUND: 1 1/2" I.P. J.W COLE VOL 3, PAGE 176 SET 5 1/2" FENCE POST 1' WEST BTS: 17" D. FIR, S34E, 6.0 FT., BLAZED & SCRIBED "E 1/16 S5 BT" 19" D. FIR, N20W, 13.9 FT., "E 1/16 S31 BT"
(17) SECTION CORNER 32-33/5-4 FOUND: 1.0" OD IRON PIPE, SET 6.0" FENCE POST 1' WEST BTS: 50" D. FIR STUMP, N42E, 12.2 FT., HEALED FACE 17" D. FIR, N52W, 17.7 FT., HEALED FACE 15" D. FIR STUMP, (S37W, 39.1 FT.), MISSING 17" D. FIR STUMP, (S22E, 31.0 FT.), MISSING

FILED Date: 12/10/94 By: JF Map: M114-60 Narrative: Corner Pin DOUGLAS COUNTY SURVEYOR: BC



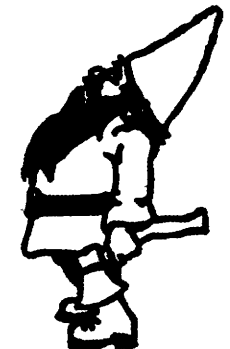
Scale: 1"=600 ft 0 600' 1200'

SURVEY FOR SENECA JONES TIMBER CO S1/2 SEC 31 & S1/2 SEC 32 T21S, R5W, W.M. DOUGLAS COUNTY, OREGON NOVEMBER 10, 1994



REGISTERED PROFESSIONAL LAND SURVEYOR

Harvey M Christensen OREGON MARCH 16, 1993 HARVEY M. CHRISTENSEN 2603



LICENSE RENEWAL DATE DECEMBER 31, 1995

NORTHWEST TIMBERLAND CONSULTING, INC. 4680 BRIARS - EUGENE, OR 97404-1113 PHONE (503) 461-4076

COUNTY SURVEYORS FILE DATA DO NOT REMOVE FROM OFFICE

MAP FILE M114-60