

FILED

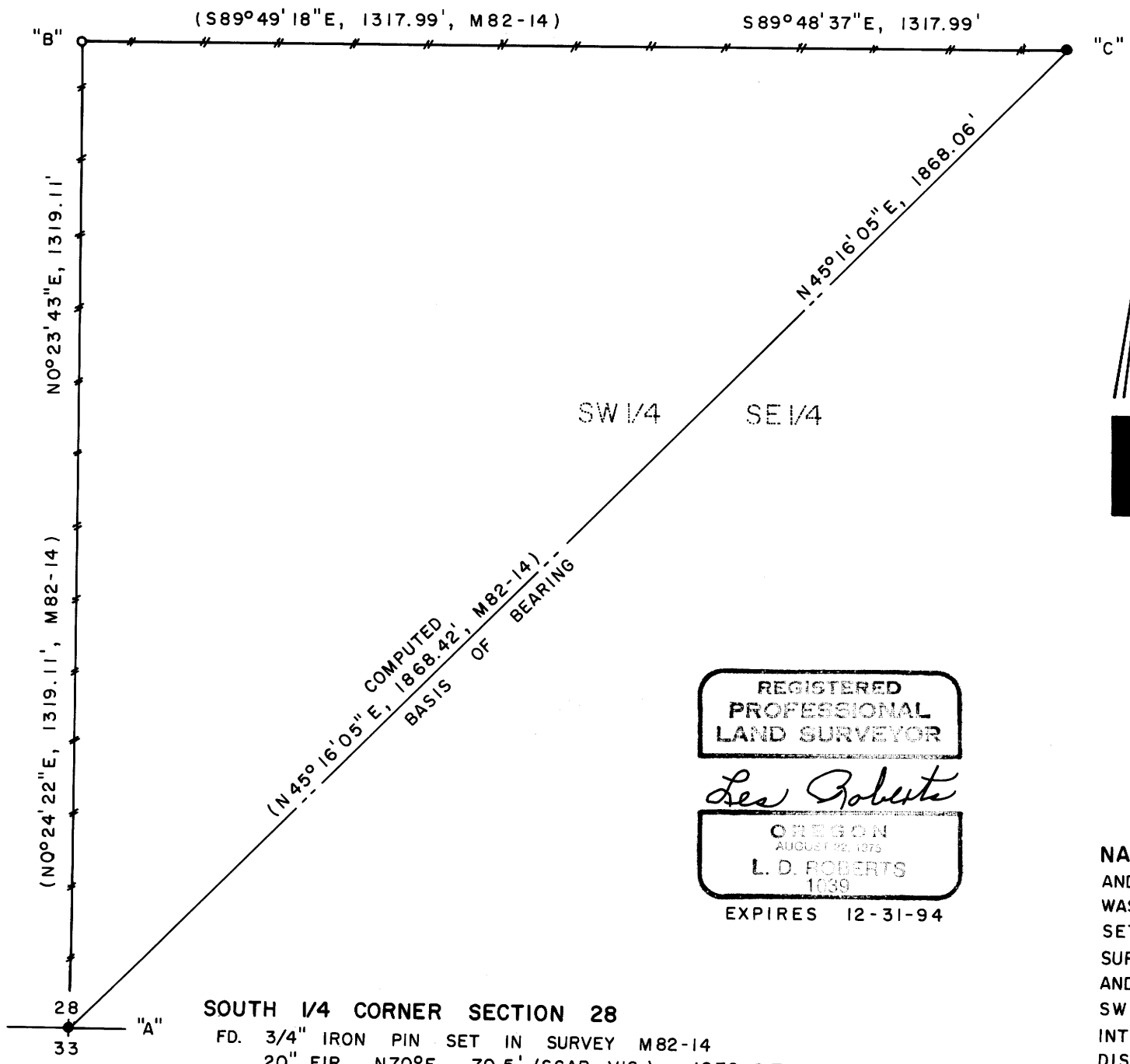
COUNTY SURVEYORS FILE DATA
DO NOT REMOVE FROM OFFICE

Date: 11-8-94 By: JP
This survey consists of:
Map: M 121-1
Narrative: _____
Corner Rpt: _____

JP DOUGLAS COUNTY SURVEYOR JP

C.S. 1/16 CORNER SECTION 28
NO MONUMENT FOUND. SET 5/8" x 30" IRON
PIN WITH YELLOW PLASTIC CAP. SET 6' METAL
FENCE POST BESIDE 5/8" IRON PIN. NO B.T.'S SET.

S.E. 1/16 CORNER SECTION 28
FD. 5/8" IRON PIN SET IN SURVEY M82-14,
NO BEARING TREES FOUND.



BOUNDARY SURVEY
FOR
NATHAN NASH
IN
SW1/4 SE1/4 SECTION 28, T21S, R4W, W.M.
DOUGLAS COUNTY, OREGON
BY
ROBERTS SURVEYING INC.
29 WEST 29TH STREET
EUGENE, OREGON 97405

OCTOBER 12, 1994
SCALE 1" = 200'

LEGEND,

- MONUMENTS FOUND AND USED FOR CONTROL
 - MONUMENT SET, 5/8" x 30" IRON PIN WITH YELLOW PLASTIC CAP. CAP STAMPED "ROBERTS P.L.S. 1039"
 - () DATA OF RECORD, COUNTY SURVEY M82-14
 - +—+— LINES BLAZED AND PAINTED THIS SURVEY
- BASIS OF BEARING, LINE "A-C" FROM SURVEY M82-14

REGISTERED
PROFESSIONAL
LAND SURVEYOR

Les Roberts

OREGON
AUGUST 12, 1975
L. D. ROBERTS
1039
EXPIRES 12-31-94

SOUTH 1/4 CORNER SECTION 28
FD. 3/4" IRON PIN SET IN SURVEY M82-14
20" FIR, N70°E, 70.5' (SCAR VIS.), 1979 B.T.
20" FIR, S44°W, 8.0' (SCAR VIS.), 1979 B.T.

NARRATIVE, THE PURPOSE OF THIS SURVEY IS TO BLAZE AND PAINT THE NORTH AND WEST BOUNDARIES OF THE SW1/4 SE1/4 OF SECTION 28. ALSO THE C.S. 1/16 CORNER WAS SET IN THIS SURVEY. MONUMENTS "A" AND "C" WERE FOUND IN THE FIELD AS SET IN SURVEY M82-14 AND SAID MONUMENTS WERE USED AS CONTROL FOR THIS SURVEY. A CLOSED RANDOM PROPERTY LINE TRAVERSE, USING A WILD T-16 THEODOLITE AND A DI-4L E.D.M., WAS RUN ALONG THE NORTH AND WEST BOUNDARIES OF SAID SW1/4 SE1/4. MONUMENT "B", THE C.S. 1/16 CORNER, WAS SET BY "DISTANCE - DISTANCE" INTERSECTION USING DATA OF RECORD FROM SURVEY M82-14, THUS THE BEARINGS AND DISTANCES OF N0°23'43"E, 1319.11 FEET FOR LINE "A-B" AND S89°48'37"E, 1317.99 FEET FOR LINE "B-C". PROPERTY LINES WERE MARKED WITH RED RIBBON AND RED PAINTED BLAZES.

MAP FILE M121-1

MAP FILE M121-1