

LONE ROCK TIMBER CO.

PO BOX 1127 ROSEBURG OREGON 97470 DATE: AUGUST 1994
 SECTION 36, TOWNSHIP 22 SOUTH, RANGE 6 WEST, W.A. DOUGLAS COUNTY, OREGON
 JUNIPER PROPERTIES TRACT J22-6-36 SCALE: 1" = 500'

NARRATIVE

THIS SURVEY WAS CONDUCTED TO ESTABLISH PROPERTY CORNERS AND PROPERTY LINES FOR TIABER CUTTING PURPOSES. WE INITIATED THIS SURVEY AT THE STANDARD CORNER OF SECTIONS 1 AND 2 WHICH IS A BLA ADJUNCT SET FROM ORIGINAL EVIDENCE, RUNNING ON A RANDOM TRAVERSE WESTERLY TO THE CLOSING CORNER OF SECTIONS 35 AND 36, A BLA BCIP SET BY PROPORTION. WE CONTINUED OUR TRAVERSE NORTHERLY TO A 5/8" IRON ROD SET BY BRANCH FOR THE S 1/16, AND THEN TO THE NORTHWEST CORNER OF SECTION 36, A COUNTY BCIP SET FROM ORIGINAL EVIDENCE. WE SET THE N 1/16 BETWEEN SECTIONS 35 AND 36 BASED ON OUR CALCULATIONS BETWEEN THE NORTHWEST AND SOUTHWEST CORNERS OF SECTION 36. WE CONTINUED OUR RANDOM TRAVERSE EASTERLY TO THE N 1/4 OF SECTION 36, A COUNTY BCIP SET FROM ORIGINAL EVIDENCE, THEN ON TO THE NORTHEAST CORNER OF SECTION 36 A 5/8" IRON ROD SET BY BRANCH BY PROPORTION. WE THEN TRAVERSED SOUTHERLY TO A 5/8" IRON ROD SET BY BLODA BY PROPORTION FOR THE E 1/4 OF SECTION 36. CONTINUING OUR TRAVERSE SOUTHWESTERLY TO BLA BCIP'S SET FROM ORIGINAL EVIDENCE FOR THE STANDARD N 1/4 CORNER FOR SECTION 1 AND THE S 1/4 CORNER OF SECTION 36 ONLY. WE THEN TRAVERSED WESTERLY TO THE W 1/16 OF SECTION 1 ONLY, A BRASS CAP SET BY BLA, CLOSING OUR TRAVERSE BACK AT THE STANDARD CORNER FOR SECTIONS 1 AND 2. BASED ON AY CALCULATIONS WE SUBDIVIDED AND SET THE CN 1/16, NE 1/16, CE 1/16 AND THE C 1/4 OF SECTION 36 AS SHOWN HEREON AND MARKED THE TRUE PROPERTY LINES AS SHOWN. THIS SURVEY WAS DONE WITH A LEITZ SET 2 TOTAL STATION WITH GARY ANGIOLET, JERRY RAGON AND PAT KELLY ASSISTING ME.

CORNER INFORMATION

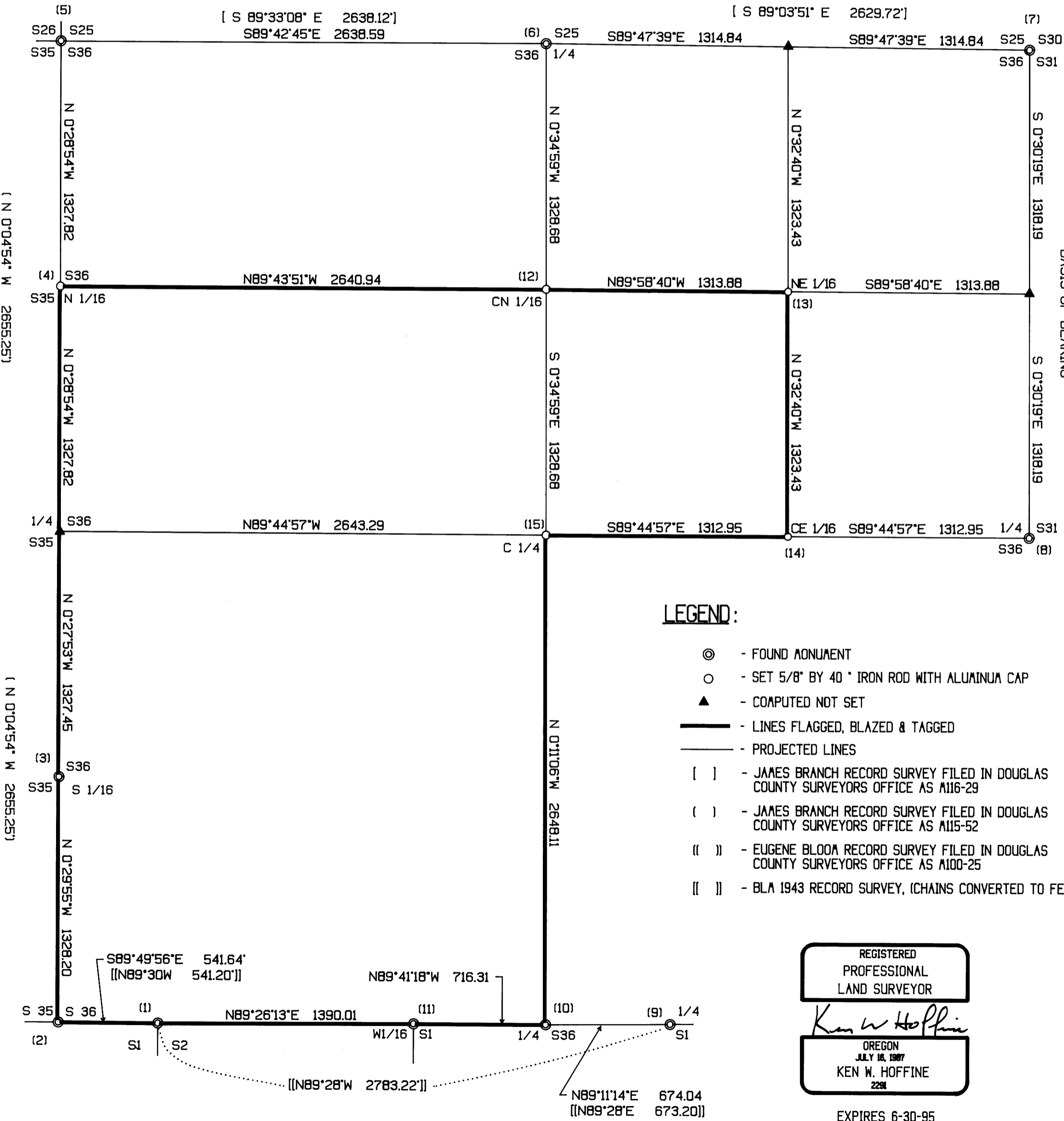
THE FOLLOWING IS A RECORD OF ALL CORNERS FOUND OR SET DURING THE COURSE OF THIS SURVEY.

- (1) STANDARD CORNER FOR SECTIONS 1 AND 2
 FOUND GLO BRASS CAP SET IN 1943
 -- 19" WHITE FIR BEARS S62°W, 27.0 FEET, WITH HEALED SCAR
 -- 18" WHITE FIR BEARS S66°E, 14.7 FEET, WITH HEALED SCAR
 -- 40" WHITE FIR BEARS N85°W, 27.4 FEET, OLD 1951 BLA TAG
 CORNER LIES ON BENCHY SOUTH SLOPE.
- (2) SOUTHWEST SECTION CORNER OF SECTION 36
 FOUND GLO BRASS CAP CORNER HAS BEEN DISTURBED BY TRACTOR, WE STRAIGHTEN CORNER.
 -- 36" WHITE FIR BEARS N59°03'W, 58.4 FEET, WELL HEALED FACE WE PLACED LRT TAG
 -- 23" WHITE FIR BEARS N33°36'E, 96.7 FEET, WELL HEALED FACE WE PLACED LRT TAG
 CORNER LIES ON NORTH EDGE OF OLD DIRT ROAD.
- (3) SOUTH 1/16 SECTION 35 AND 36
 FOUND 5/8" IRON ROD WITH BRANCH ENGINEERING PLASTIC CAP.
 -- 18" WHITE FIR BEARS S63°W, 35.1 FEET, SCRIBING VISIBLE BT TAG
 -- 14" WHITE FIR BEARS S49°E, 22.3 FEET, SCRIBING VISIBLE BT TAG
 CORNER LIES 2.0 FEET EAST OF A CORNER POST OF A FENCE RUNNING NORTH AND WEST. ANOTHER FENCE CORNER OF A SOUTH AND EAST FENCE IS APPROXIMATELY 25 FEET SOUTHEAST OF CORNER.
- (4) NORTH 1/16 SECTION 35 AND 36
 SET 5/8" X 36" REBAR WITH ALUMINUM CAP WHICH READS LRT N 1/16 S35 & 36 1993 PLS 2291.
 -- 18" APPLE BEARS N68°43'E, 35.63 FEET, I TAGGED AND SCRIBED N 1/16 S36 BT
 -- 30" OAK BEARS S10°48'W, 59.40 FEET, I TAGGED AND SCRIBED N 1/16 S36 BT
 CORNER LIES IN GRASSY AREA BETWEEN BRUSHY RANGE LAND TO EAST AND YOUNG PLANTATION TO WEST.
- (5) NORTHWEST SECTION CORNER OF SECTION 36
 FOUND COUNTY SURVEYOR BRASS CAP.
 -- 13" DOUGLAS FIR BEARS N55°W, 8.27 FEET, WELL HEALED SCAR WITH TAG
 -- 8" DOUGLAS FIR STUAP BEARS N55°W, 82.7 FEET, NO VISIBLE MARKS
 -- 13" DOUGLAS FIR STUAP BEARS N26°E, 67.3 FEET, NO VISIBLE MARKS
 -- 9" WHITE FIR STUAP BEARS N63 1/2°E, 124.6 FEET, NO VISIBLE MARKS
 CORNER LIES ON ADDEST WEST FACING SLOPE. 50 FEET WEST OF CORNER IS A NORTH SOUTH RUNNING FENCE LINE. AN OLD SKID ROAD BEARS NORTH APPROX. 20 FEET.
- (6) NORTH 1/4 SECTION 36
 FOUND DOUGLAS COUNTY SURVEYOR 1982 BRASS CAP RESET IN 1991.
 -- 51" INCENSE CEDAR BEARS S56°30'E, 222.8 FEET
 -- 32" BLACK OAK BEARS N82°E, 218.0 FEET
 -- 43" BLACK OAK BEARS S20°E, 223.3 FEET
 CORNER LIES ON ADDESTATE SOUTH SLOPE IN OLD PASTURE OVERGROWN WITH BLACKBERRY.
- (7) NORTHEAST CORNER OF SECTION 36.
 FOUND 5/8" REBAR WITH YELLOW CAP MARKED "BRANCH ENG L3 1138".
 -- PLASTIC CAP MARKED "REF AON. LS1138" BEARS N60°W, 22.43 FEET
 -- PLASTIC CAP MARKED "REF AON. LS1138" BEARS S1°30'E, 18.96 FEET
 -- PLASTIC CAP MARKED "REF AON. LS1138" BEARS S89°30'E, 59.44 FEET
 -- PLASTIC CAP MARKED "REF AON. LS1138" BEARS N12°W, 65.60 FEET
 CORNER LIES 1.0 FOOT WEST OF NORTH SOUTH FENCE LINE AND APPROXIMATELY 22 FEET SOUTH OF FENCE JUNCTION.
- (8) EAST 1/4 SECTION 36
 FOUND 5/8" IRON ROD WITH PLASTIC CAP MARKED "AA SURVEYING INC".
 -- 14" DOUGLAS FIR BEARS S66°W, 33.1 FEET, WELL HEALED, WE TAG
 -- 24" DOUGLAS FIR BEARS S15°E, 35.2 FEET, SOME SCRIBING BARELY VISIBLE, WE TAG
 CORNER LIES 6.7 FEET SOUTH OF FENCE LINE IN FENCE CONSTRUCTION CAT ROAD.
- (9) STANDARD NORTH 1/4 CORNER FOR SECTION 1
 FOUND GLO BRASS CAP SET IN 1943.
 -- ORIGINAL DOUGLAS FIR NOW A 48" ROTTEN STUAP BEARS S68°E, 42.0 FEET, NO VISIBLE SCRIBING
 -- 28" DOUGLAS FIR STUAP BEARS S66°W, 24.4 FEET, WITH VISIBLE SCRIBING
 -- 24" DOUGLAS FIR DECAYED STUAP BEARS S68°E, 70.0 FEET, NO VISIBLE SCRIBING
 -- 8" DOUGLAS FIR BEARS S20°W, 35.0 FEET WITH TAG
 CORNER LIES ON FLAT GROUND APPROXIMATELY 50 FEET EAST FROM FOOT OF STEEP HILL.
- (10) SOUTH 1/4 SECTION 36 ONLY
 FOUND 2 1/2" GLO BRASS CAP 2 FEET BELOW GROUND. BRASS CAP IS BENT APPROXIMATELY 0.3° NORTHEAST.
 -- 1 1/2" IRON PIPE BEARS N49°E, 1.9 FEET, ORIGINAL BT TO IRON PIPE BEARS N10°E, 2.0 FEET TO CHOPPED OUT FACE
 -- 46" DOUGLAS FIR STUAP BEARS N27°E, 4.8 FEET TO FACE CHOPPED OUT, SCRIBING VISIBLE
 -- 20" DOUGLAS FIR STUAP BEARS N54°W, 68.0 FEET, SCRIBING VISIBLE
 -- 18" DOUGLAS FIR BEARS S69°E, 18.5 FEET, I TAGGED AND SCRIBED 1/4 S36 BT
 CORNER LIES ON EAST EDGE OF ROAD GRADE FILL SLOPE.
- (11) WEST 1/16 OF SECTION 1 ONLY
 FOUND BLA BRASS CAP.
 -- 12" DOUGLAS FIR BEARS SOUTH 1.2 FEET, WELL HEALED SCAR TAGGED BY BLA AND LRT
 -- 8" DOUGLAS FIR BEARS S63 1/2°W TO FENCE LINE
 CORNER LIES ON FLAT BENCH WITH GRASS FIELD TO SOUTHEAST, REPROD TO NORTHEAST AND NORTHWEST AND BLA TIABER TO THE SOUTHWEST. AN OLD FENCE LINE BEARS SOUTH 9.0 FEET.
- (12) CENTER NORTH 1/16 SECTION 36
 SET 5/8" X 36" REBAR WITH ALUMINUM CAP WHICH READS LRT CN 1/16 S36 1993 PLS 2291.
 -- 19" DOUGLAS FIR BEARS N77°47'W, 28.7 FEET, I TAGGED AND SCRIBED N 1/16 S36 BT
 -- 19" DOUGLAS FIR BEARS S14°24'W, 46.7 FEET, I TAGGED AND SCRIBED CN 1/16 S36 BT
 CORNER LIES ON A SOUTH EAST GENTLE SLOPE APPROXIMATELY 25 FEET WEST OF ROAD. A FENCE RUNNING WEST LIES SOUTH AT 10 FEET FROM CORNER. ANOTHER FENCE RUNNING N11°E LIES EAST AT 9 FEET OF CORNER.
- (13) NORTHEAST 1/16 SECTION 36
 SET 5/8" X 36" REBAR WITH ALUMINUM CAP WHICH READS LRT NE 1/16 S36 1993 PLS 2291.
 -- 5" DOUGLAS FIR BEARS N28°30'E, 12.8 FEET, I TAGGED AND SCRIBED NE 1/16 S36 BT
 -- 23" OAK BEARS S61°25'W, 14.6 FEET, I TAGGED AND SCRIBED NE 1/16 S36 BT
 CORNER LIES ON A GENTLE SOUTHEAST SLOPE, AT A FENCE CORNER AND APPROX. 23 FEET SOUTH OF A GRAVEL ROAD.
- (14) CENTER EAST 1/16 SECTION 36
 SET 5/8" X 36" REBAR WITH ALUMINUM CAP WHICH READS LRT CE 1/16 S36 1993 PLS 2291.
 -- 11" DOUGLAS FIR BEARS S58°52'W, 7.7 FEET, I TAGGED AND SCRIBED CE 1/16 S36 B.T.
 -- 11" DOUGLAS FIR BEARS S72°18'E, 9.1 FEET, I TAGGED AND SCRIBED CE 1/16 S36 B.T.
 CORNER LIES ON EDGE OF WIDE FLAT BENCH TO THE WEST. STEEP SIDE SLOPE TO THE EAST.
- (15) CENTER 1/4 SECTION 36
 SET 5/8" X 36" REBAR WITH ALUMINUM CAP WHICH READS LRT C 1/4 S36 1993 PLS 2291.
 -- 10" DOUGLAS FIR BEARS S69°35'E, 24.7 FEET, I TAGGED AND SCRIBED C 1/4 S36 B.T.
 -- 10" DOUGLAS FIR BEARS S81°4'E, 26.8 FEET, I TAGGED AND SCRIBED C 1/4 S36 B.T.
 -- 15" DOUGLAS FIR BEARS S70°39'W, 34.4 FEET, I TAGGED AND SCRIBED C 1/4 S36 B.T.
 -- 13" DOUGLAS FIR BEARS N1°35'W, 7.6 FEET, I TAGGED AND SCRIBED C 1/4 S36 B.T.
 CORNER LIES ON 30% SOUTHEAST SIDE SLOPE APPROXIMATELY 40 FEET NORTH OF SHALLOW SWALE.

FILED

Date: 11-4-94 By: JP
 This survey consists of:
 Map: M120-79
 Narrative:
 Corner Rpt:

DOUGLAS COUNTY, OR
 SURVEYOR



- ### LEGEND:
- ⊙ - FOUND ADJUNCT
 - - SET 5/8" BY 40" IRON ROD WITH ALUMINUM CAP
 - ▲ - COMPUTED NOT SET
 - - LINES FLAGGED, BLAZED & TAGGED
 - - - - - PROJECTED LINES
 - [] - JAMES BRANCH RECORD SURVEY FILED IN DOUGLAS COUNTY SURVEYORS OFFICE AS 1116-29
 - () - JAMES BRANCH RECORD SURVEY FILED IN DOUGLAS COUNTY SURVEYORS OFFICE AS 1115-52
 - (()) - EUGENE BLODA RECORD SURVEY FILED IN DOUGLAS COUNTY SURVEYORS OFFICE AS 1100-25
 - ([]) - BLA 1943 RECORD SURVEY, (CHAINS CONVERTED TO FEET)

REGISTERED
 PROFESSIONAL
 LAND SURVEYOR

 OREGON
 JULY 18, 1987
 KEN W. HOFFINE
 2281

EXPIRES 6-30-95

COUNTY SURVEYORS FILE DATA
 DO NOT REMOVE FROM OFFICE

MAP FILE M120-79

MAP FILE M120-79