

PROPERTY SURVEY
LOCATED IN SECTIONS 14, 23, 26 & 35, TOWNSHIP 20 SOUTH, RANGE 12 WEST, W. M.
DOUGLAS COUNTY, OREGON

FILED
 Date: 10-21-94 By: AP
 This survey consists of: 4 MAPS
 Map: M 120-75 C
 Narrative: C.S. 63/145
 Corner Rpt: C.S. 63/145

SURVEY FOR: TAHKENITCH TREE FARM DOUGLAS COUNTY SURVEYOR
AGENT: BOB CRAIN
 PO BOX 495
 REEDSPORT, OR. 97467

NOTE:
 SEE SHEET 1 OF 4 FOR SURVEY DETAILS OF SECTION 14.
 SEE SHEET 2 OF 4 FOR SURVEY DETAILS OF SECTION 23.
 SEE SHEET 3 OF 4 FOR SURVEY DETAILS OF SECTION 26.
 SEE SHEET 4 OF 4 FOR SURVEY DETAILS OF SECTION 35.
 SEE SEPARATE NOTES RECORDED IN CS FILE *
 FOR NARRATIVE, REFERENCE INFORMATION AND CORNER NOTES.

BASIS OF BEARING:
 THE BASIS OF BEARING IS BASED ON A SOLAR OBSERVATION
 PERFORMED IN CS #M116-32.

LEGEND

- ⊙ MONUMENTS FOUND AS NOTED.
- SET 3/4" X 30" IRON ROD WITH 2" ALUMINUM CAP MARKED AS NOTED.
- CORNER POSITION CALCULATED PER CS #M116-32.
- () RECORD INFORMATION
- PROPERTY LINES FLAGGED AND BLAZED.
- Ⓢ CORNER IDENTIFICATION FOR CORNER NOTES

SCALE 1" = 400'

REGISTERED
**PROFESSIONAL
 LAND SURVEYOR**
Ronald E. Stuntz
 OREGON
 SEPTEMBER 21, 1977
RONALD E. STUNTZNER
 1342
 EXPIRES 12/31/94

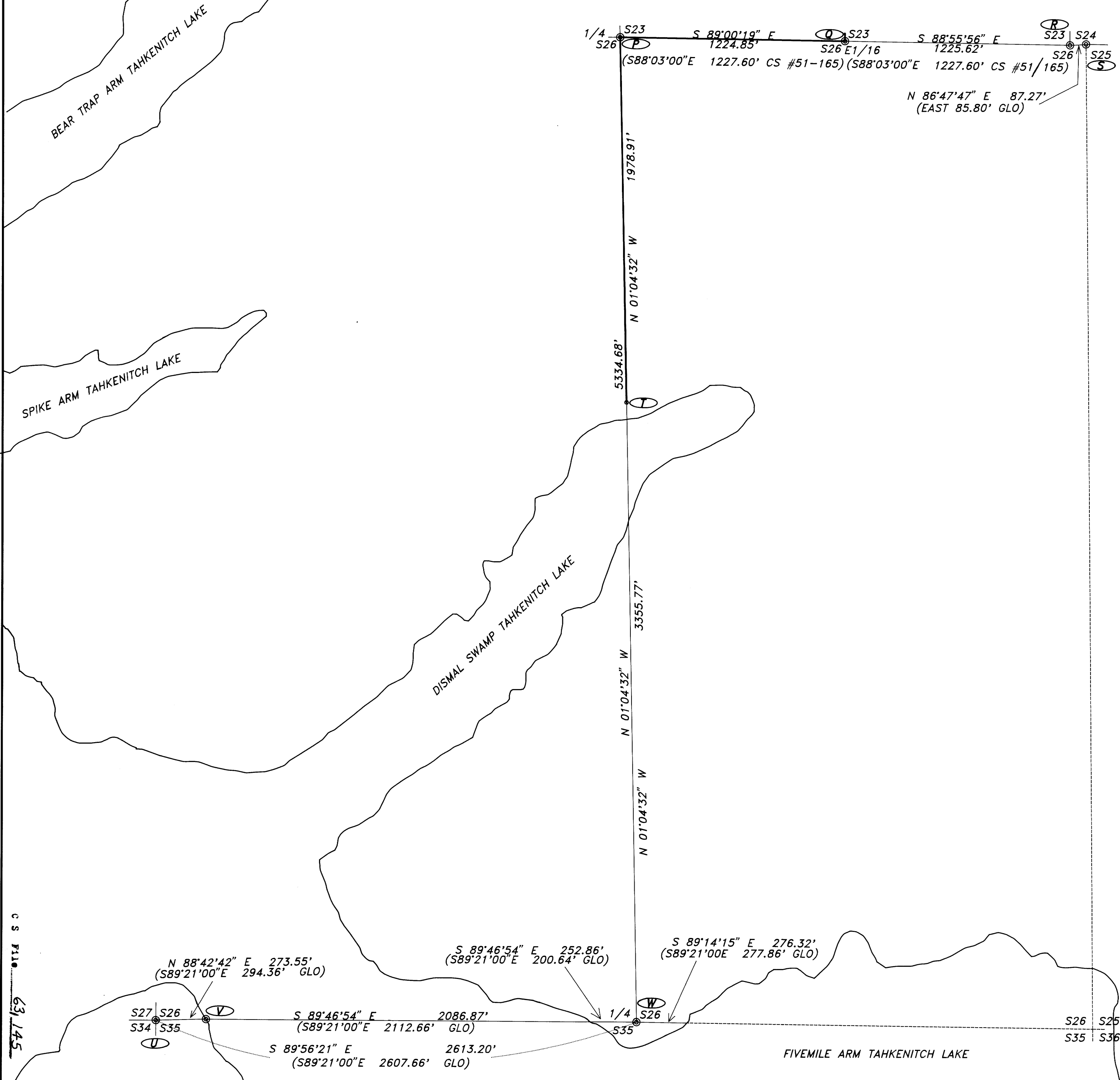
**Stuntzner Engineering
 & Forestry**

**ENGINEERING • LAND SURVEYING • FORESTRY
 PLANNING • WATER RIGHTS**

705 South 4th St.
 Post Office Box 118
 Coos Bay, Oregon 97420
 Phone: (503) 267-2872
 Fax: (503) 267-0588

Drawn By: JERRY ESTABROOK	Date: AUGUST 19, 1994
Checked By: TOM HOSHALL	Drawing No.: 94-12326
Designed By:	Revised:
Job Name: TAHKENITCH TREE FARM SURVEY Sheet 3 of 4	

**COUNTY SURVEYORS FILE DATA
 DO NOT REMOVE FROM OFFICE**



C.S. FILE 63/145
 MAP FILE M120-75C

C.S. FILE 63/145
 MAP FILE M120-75C