

PROPERTY SURVEY

LOCATED IN SECTIONS 14, 23, 26 & 35, TOWNSHIP 20 SOUTH, RANGE 12 WEST, W. M. DOUGLAS COUNTY, OREGON

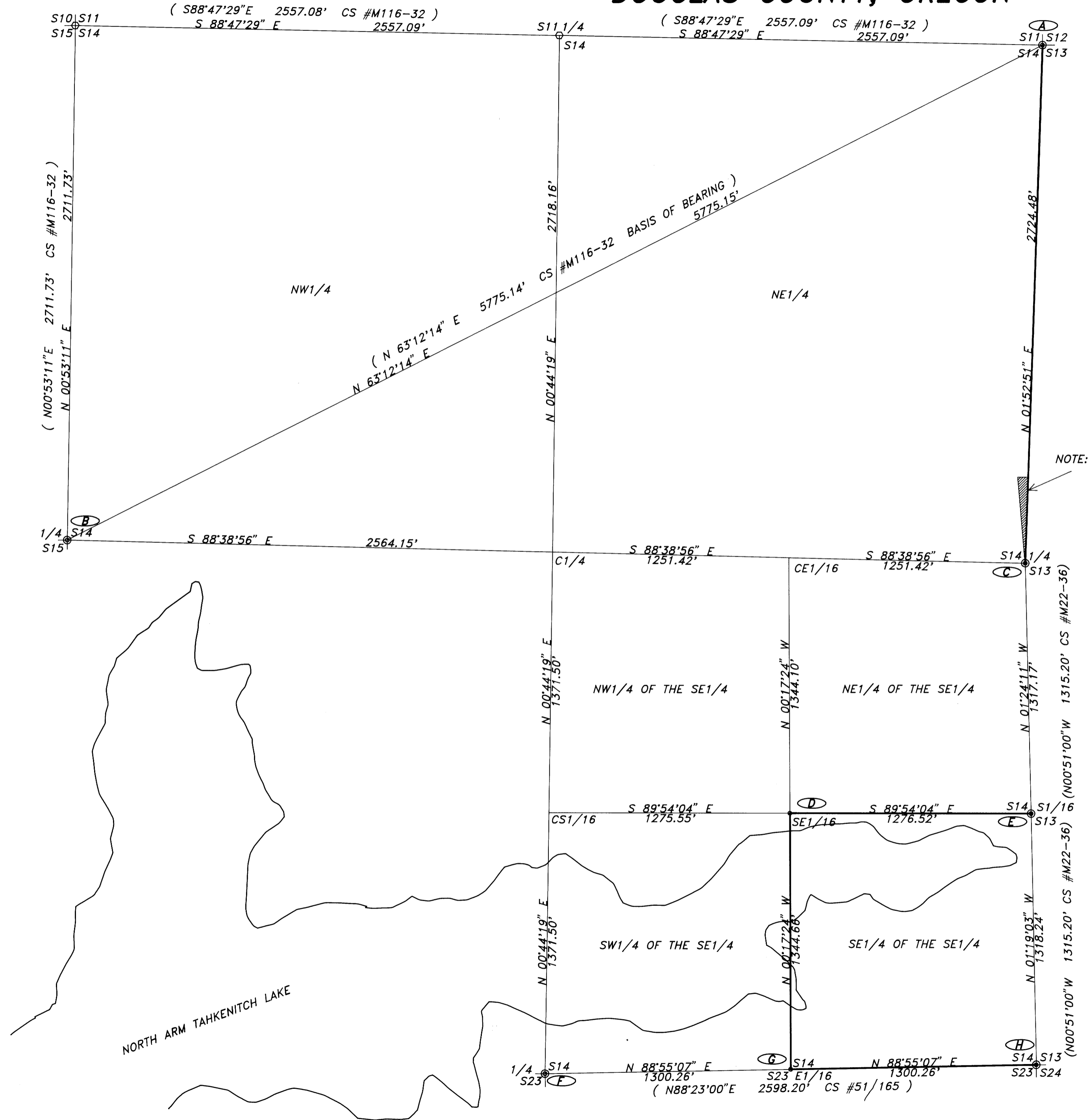
FILED
Date: 10-21-94 By: JP
This survey consists of: 4 MAPS
Map: M120-75 A
Narrative: C.S. 63/145
Corner Eqs: C.S. 63/145

SURVEY FOR: TAHKENITCH TREE FARM DOUGLAS COUNTY
AGENT: BOB CRAIN SURVEYOR
PO BOX 495
REEDSPORT, OR. 97467

NOTE:
SEE SHEET 1 OF 4 FOR SURVEY DETAILS OF SECTION 14.
SEE SHEET 2 OF 4 FOR SURVEY DETAILS OF SECTION 23.
SEE SHEET 3 OF 4 FOR SURVEY DETAILS OF SECTION 26.
SEE SHEET 4 OF 4 FOR SURVEY DETAILS OF SECTION 35.
SEE SEPARATE NOTES RECORDED IN CS FILE *
FOR NARRATIVE, REFERENCE INFORMATION AND CORNER NOTES.

BASIS OF BEARING:
THE BASIS OF BEARING IS BASED ON A SOLAR OBSERVATION
PERFORMED IN CS #M116-32.

- LEGEND**
- ⊙ MONUMENTS FOUND AS NOTED.
 - SET 3/4" X 30" IRON ROD WITH 2" ALUMINUM CAP MARKED AS NOTED.
 - CORNER POSITION CALCULATED PER CS #M116-32.
 - () RECORD INFORMATION
 - PROPERTY LINES FLAGGED AND BLAZED.
 - ⊙ CORNER IDENTIFICATION FOR CORNER NOTES



NOTE: TIMBER TRESPASS
0.28 ACRES



SCALE 1" = 400'

REGISTERED
**PROFESSIONAL
LAND SURVEYOR**
Ronald E. Stuntz
OREGON
SEPTEMBER 21, 1977
RONALD E. STUNTZNER
1342
EXPIRES 12/31/94

*Stuntzner Engineering
& Forestry*

**ENGINEERING • LAND SURVEYING • FORESTRY
PLANNING • WATER RIGHTS**
705 South 4th St. Phone: (503) 267-2872
Post Office Box 118 Coos Bay, Oregon 97420 Fax: (503) 267-0588

**COUNTY SURVEYORS FILE DATA
DO NOT REMOVE FROM OFFICE.**

Drawn By: JERRY ESTABROOK	Date: AUGUST 19, 1994
Checked By: TOM HOSHALL	Drawing No.: 94-12314
Designed By:	Revised:
Job Name: TAHKENITCH TREE FARM SURVEY Sheet 1 of 4	

C.S. FILE # 63/145
Map File M120-75 A

C.S. FILE # 63/145
Map File M120-75 A