

# PROPERTY SURVEY

## LOCATED IN SECTIONS 14, 23, 26 & 35, TOWNSHIP 20 SOUTH, RANGE 12 WEST, W. M.

### DOUGLAS COUNTY, OREGON

FILED  
 Date: 10-21-94 By: JP  
 This survey consists of: 4 MAPS  
 Map: M120-75 A  
 Narrative: C.S. 63/145  
 Corner Eqs: C.S. 63/145

SURVEY FOR: TAHKENITCH TREE FARM DOUGLAS COUNTY  
 AGENT: BOB CRAIN SURVEYOR JP  
 PO BOX 495  
 REEDSPORT, OR. 97467

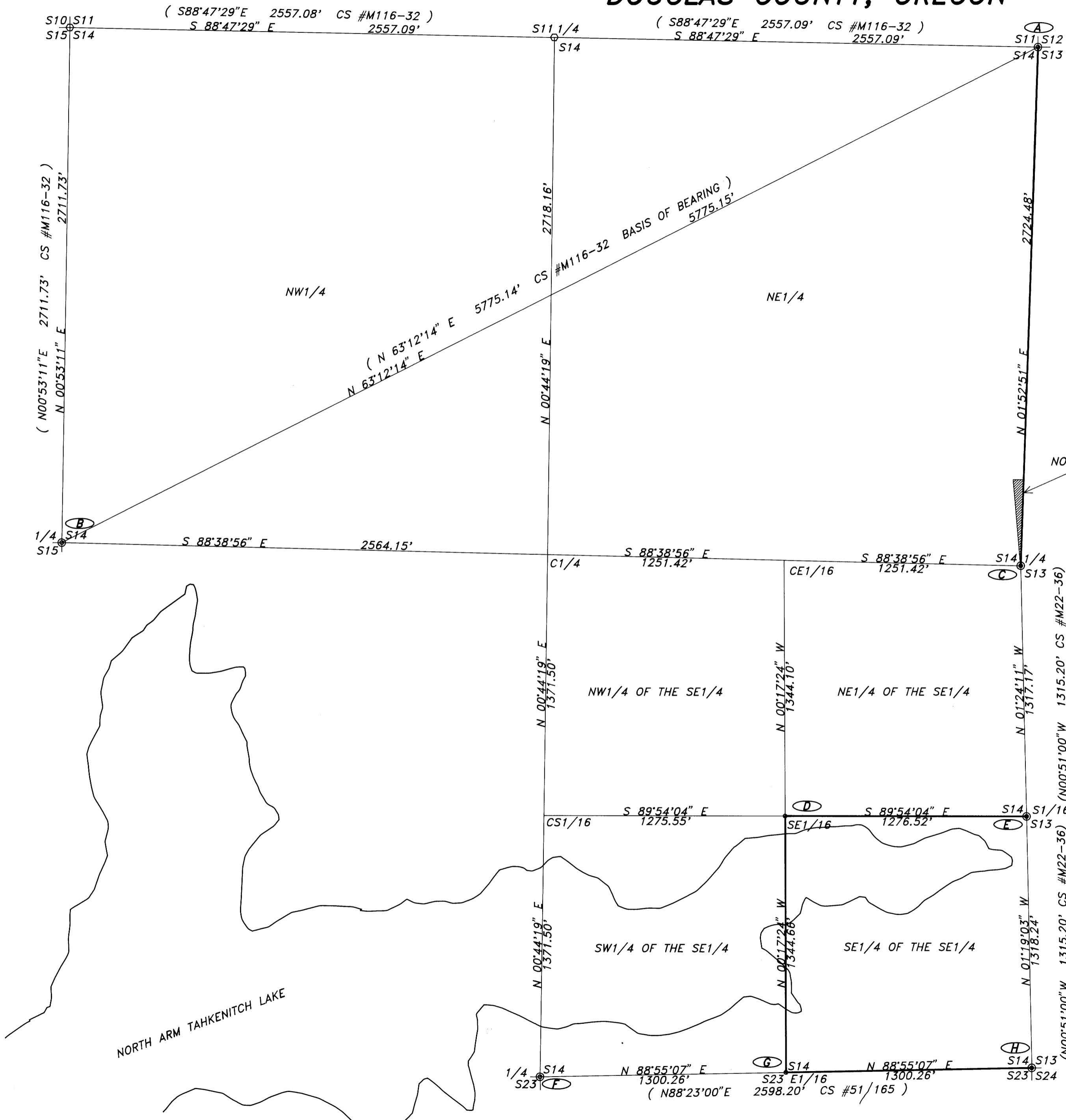
**NOTE:**  
 SEE SHEET 1 OF 4 FOR SURVEY DETAILS OF SECTION 14.  
 SEE SHEET 2 OF 4 FOR SURVEY DETAILS OF SECTION 23.  
 SEE SHEET 3 OF 4 FOR SURVEY DETAILS OF SECTION 26.  
 SEE SHEET 4 OF 4 FOR SURVEY DETAILS OF SECTION 35.  
 SEE SEPARATE NOTES RECORDED IN CS FILE \*  
 FOR NARRATIVE, REFERENCE INFORMATION AND CORNER NOTES.

**BASIS OF BEARING:**  
 THE BASIS OF BEARING IS BASED ON A SOLAR OBSERVATION  
 PERFORMED IN CS #M116-32.

**LEGEND**

- ⊙ MONUMENTS FOUND AS NOTED.
- SET 3/4" X 30" IRON ROD WITH 2" ALUMINUM CAP MARKED AS NOTED.
- CORNER POSITION CALCULATED PER CS #M116-32.
- ( ) RECORD INFORMATION
- PROPERTY LINES FLAGGED AND BLAZED.
- ⊙ CORNER IDENTIFICATION FOR CORNER NOTES

NOTE: TIMBER TRESPASS  
 0.28 ACRES



SCALE 1" = 400'

REGISTERED  
**PROFESSIONAL  
 LAND SURVEYOR**

*Ronald E. Stuntz*

OREGON  
 SEPTEMBER 21, 1977  
**RONALD E. STUNTZNER**  
 1342  
 EXPIRES 12/31/94

**Stuntzner Engineering  
 & Forestry**

ENGINEERING • LAND SURVEYING • FORESTRY  
 PLANNING • WATER RIGHTS

705 South 4th St. Phone: (503) 267-2872  
 Post Office Box 118 Coos Bay, Oregon 97420 Fax: (503) 267-0588

Drawn By: JERRY ESTABROOK	Date: AUGUST 19, 1994
Checked By: TOM HOSHALL	Drawing No.: 94-12314
Designed By:	Revised:
Job Name: TAHKENITCH TREE FARM SURVEY Sheet 1 of 4	

**COUNTY SURVEYORS FILE DATA  
 DO NOT REMOVE FROM OFFICE.**

C.S. FILE # 63/145  
 MAP FILE # M120-75 A

C.S. FILE # 63/145  
 MAP FILE # M120-75 A



**PROPERTY SURVEY**  
**LOCATED IN SECTIONS 14, 23, 26 & 35, TOWNSHIP 20 SOUTH, RANGE 12 WEST, W. M.**  
**DOUGLAS COUNTY, OREGON**

FILED  
 Date: 10-21-94 By: AP  
 This survey consists of: 4 MAPS  
 Map: M 120-75 C  
 Narrative: C.S. 63/145  
 Corner Rpt: C.S. 63/145

**SURVEY FOR: TAHKENITCH TREE FARM** DOUGLAS COUNTY SURVEYOR  
**AGENT: BOB CRAIN**  
 PO BOX 495  
 REEDSPORT, OR. 97467

**NOTE:**  
 SEE SHEET 1 OF 4 FOR SURVEY DETAILS OF SECTION 14.  
 SEE SHEET 2 OF 4 FOR SURVEY DETAILS OF SECTION 23.  
 SEE SHEET 3 OF 4 FOR SURVEY DETAILS OF SECTION 26.  
 SEE SHEET 4 OF 4 FOR SURVEY DETAILS OF SECTION 35.  
 SEE SEPARATE NOTES RECORDED IN CS FILE \*  
 FOR NARRATIVE, REFERENCE INFORMATION AND CORNER NOTES.

**BASIS OF BEARING:**  
 THE BASIS OF BEARING IS BASED ON A SOLAR OBSERVATION  
 PERFORMED IN CS #M116-32.

- LEGEND**
- ⊙ MONUMENTS FOUND AS NOTED.
  - SET 3/4" X 30" IRON ROD WITH 2" ALUMINUM CAP MARKED AS NOTED.
  - CORNER POSITION CALCULATED PER CS #M116-32.
  - ( ) RECORD INFORMATION
  - PROPERTY LINES FLAGGED AND BLAZED.
  - Ⓢ CORNER IDENTIFICATION FOR CORNER NOTES



SCALE 1" = 400'

REGISTERED  
**PROFESSIONAL  
 LAND SURVEYOR**  
*Ronald E. Stuntzner*  
 OREGON  
 SEPTEMBER 21, 1977  
**RONALD E. STUNTZNER**  
 1342  
 EXPIRES 12/31/94

**Stuntzner Engineering  
 & Forestry**

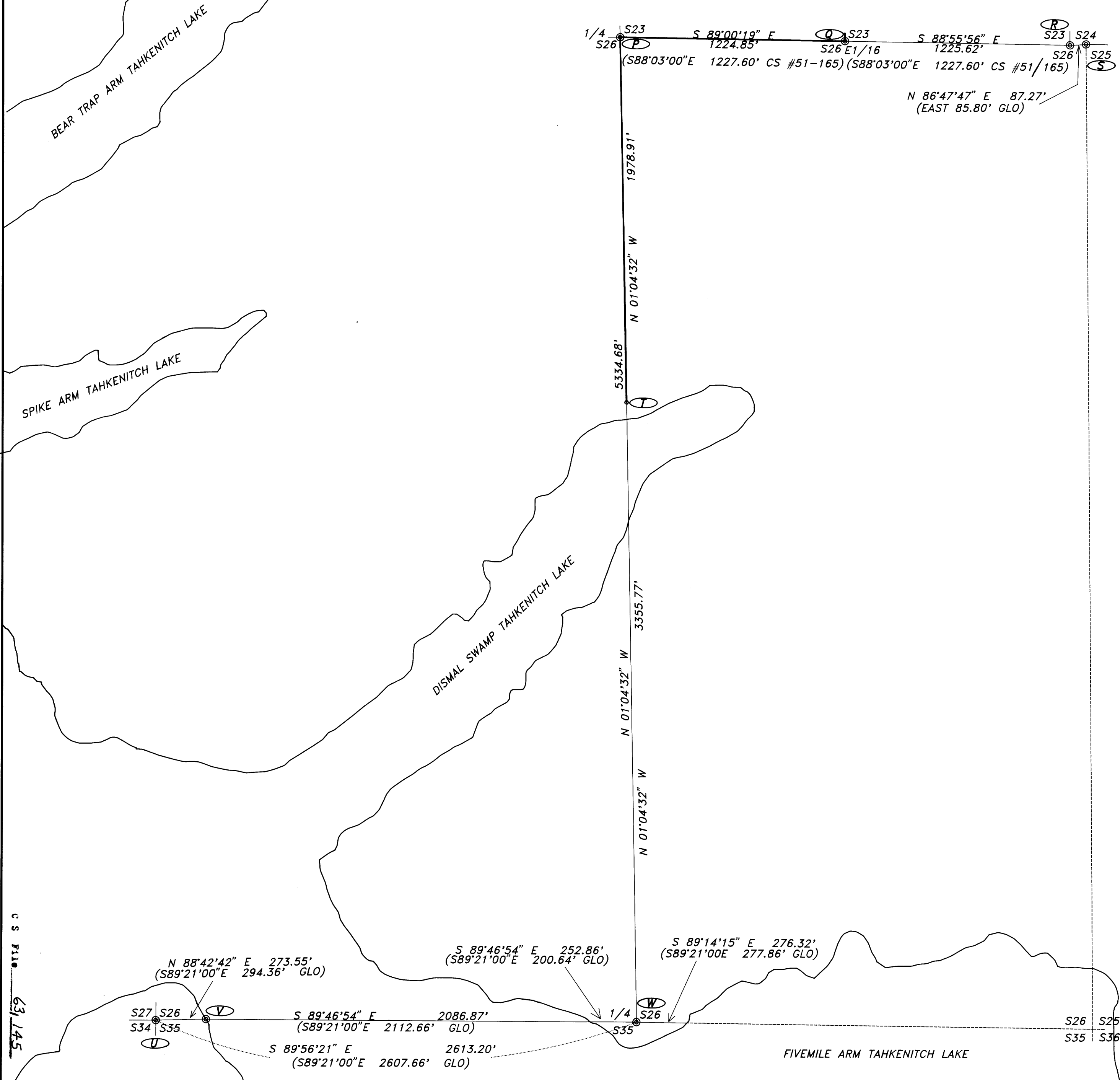
ENGINEERING • LAND SURVEYING • FORESTRY  
 PLANNING • WATER RIGHTS

705 South 4th St.  
 Post Office Box 118  
 Coos Bay, Oregon 97420  
 Phone: (503) 267-2872  
 Fax: (503) 267-0588

Drawn By: JERRY ESTABROOK	Date: AUGUST 19, 1994
Checked By: TOM HOSHALL	Drawing No.: 94-12326
Designed By:	Revised:

Job Name: TAHKENITCH TREE FARM SURVEY Sheet 3 of 4

**COUNTY SURVEYORS FILE DATA  
 DO NOT REMOVE FROM OFFICE**



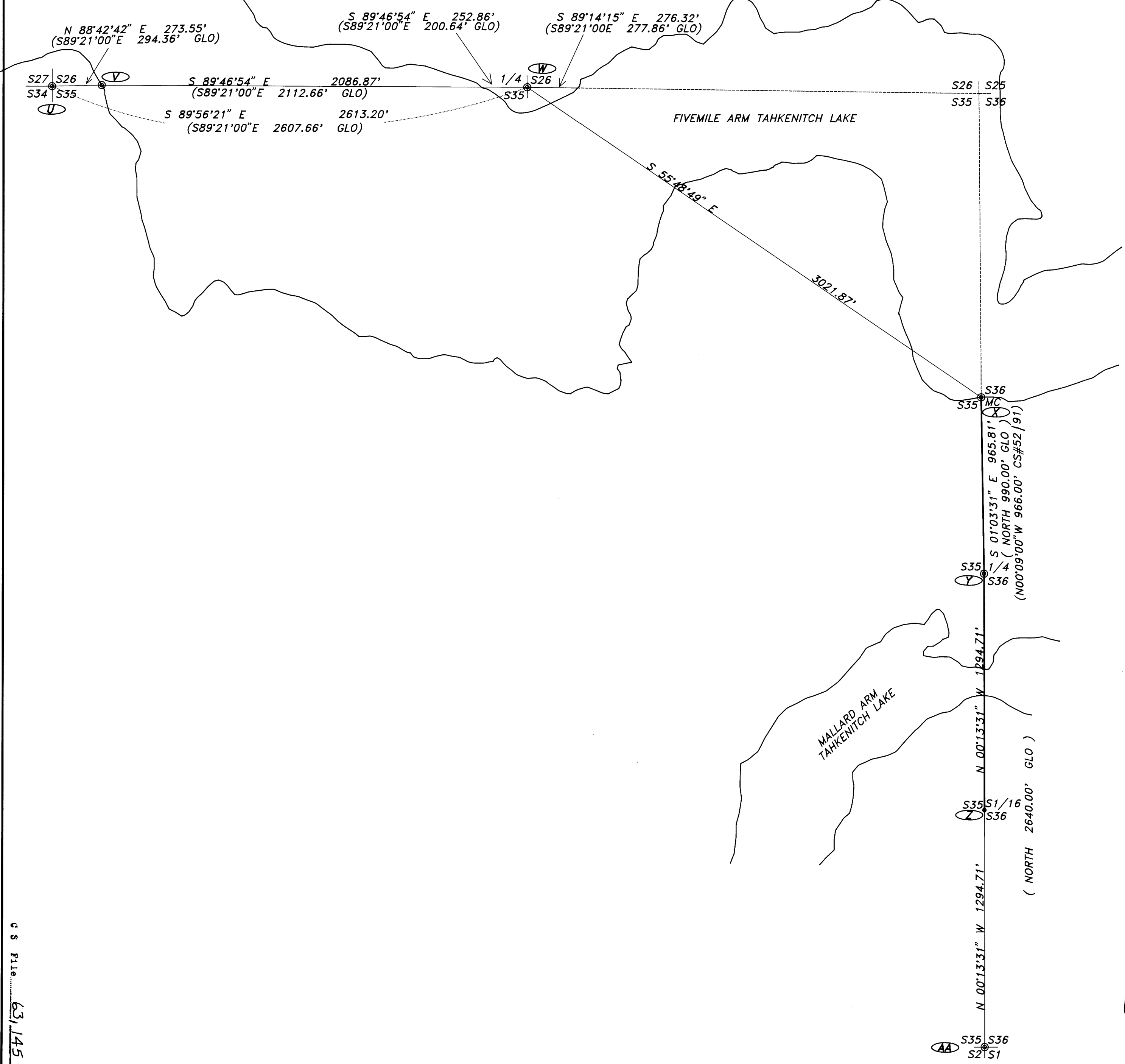
C.S. FILE 63/145  
 MAP FILE M120-75C

C.S. FILE 63/145  
 MAP FILE M120-75C

**PROPERTY SURVEY**  
**LOCATED IN SECTIONS 14, 23, 26 & 35, TOWNSHIP 20 SOUTH, RANGE 12 WEST, W. M.**  
**DOUGLAS COUNTY, OREGON**

FILED  
 Date: 10-21-94 By: JP  
 This survey consists of: 4 MAPS  
 Map: M120-75 D  
 Narrative: C.S. 63/145  
 Corner Rpt: C.S. 63/145

DOUGLAS COUNTY  
 SURVEYOR  
**SURVEY FOR: TAHKENITCH TREE FARM**  
 AGENT: BOB CRAIN  
 PO BOX 495  
 REEDSPORT, OR. 97467



**NOTE:**  
 SEE SHEET 1 OF 4 FOR SURVEY DETAILS OF SECTION 14.  
 SEE SHEET 2 OF 4 FOR SURVEY DETAILS OF SECTION 23.  
 SEE SHEET 3 OF 4 FOR SURVEY DETAILS OF SECTION 26.  
 SEE SHEET 4 OF 4 FOR SURVEY DETAILS OF SECTION 35.  
 SEE SEPARATE NOTES RECORDED IN C.S. FILE #  
 FOR NARRATIVE, REFERENCE INFORMATION AND CORNER NOTES.

**BASIS OF BEARING:**  
 THE BASIS OF BEARING IS BASED ON A SOLAR OBSERVATION  
 PERFORMED IN CS #M116-32.

- LEGEND**
- ⊙ MONUMENTS FOUND AS NOTED.
  - SET 3/4" X 30" IRON ROD WITH 2" ALUMINUM CAP MARKED AS NOTED.
  - CORNER POSITION CALCULATED PER CS #M116-32.
  - ( ) RECORD INFORMATION
  - PROPERTY LINES FLAGGED AND BLAZED.
  - ⊗ CORNER IDENTIFICATION FOR CORNER NOTES



SCALE 1" = 400'

REGISTERED  
**PROFESSIONAL  
 LAND SURVEYOR**  
*Ronald E. Stuntzner*  
 OREGON  
 SEPTEMBER 21, 1977  
**RONALD E. STUNTZNER**  
 1342  
 EXPIRES 12/31/94

**Stuntzner Engineering  
 & Forestry**

**ENGINEERING • LAND SURVEYING • FORESTRY  
 PLANNING • WATER RIGHTS**

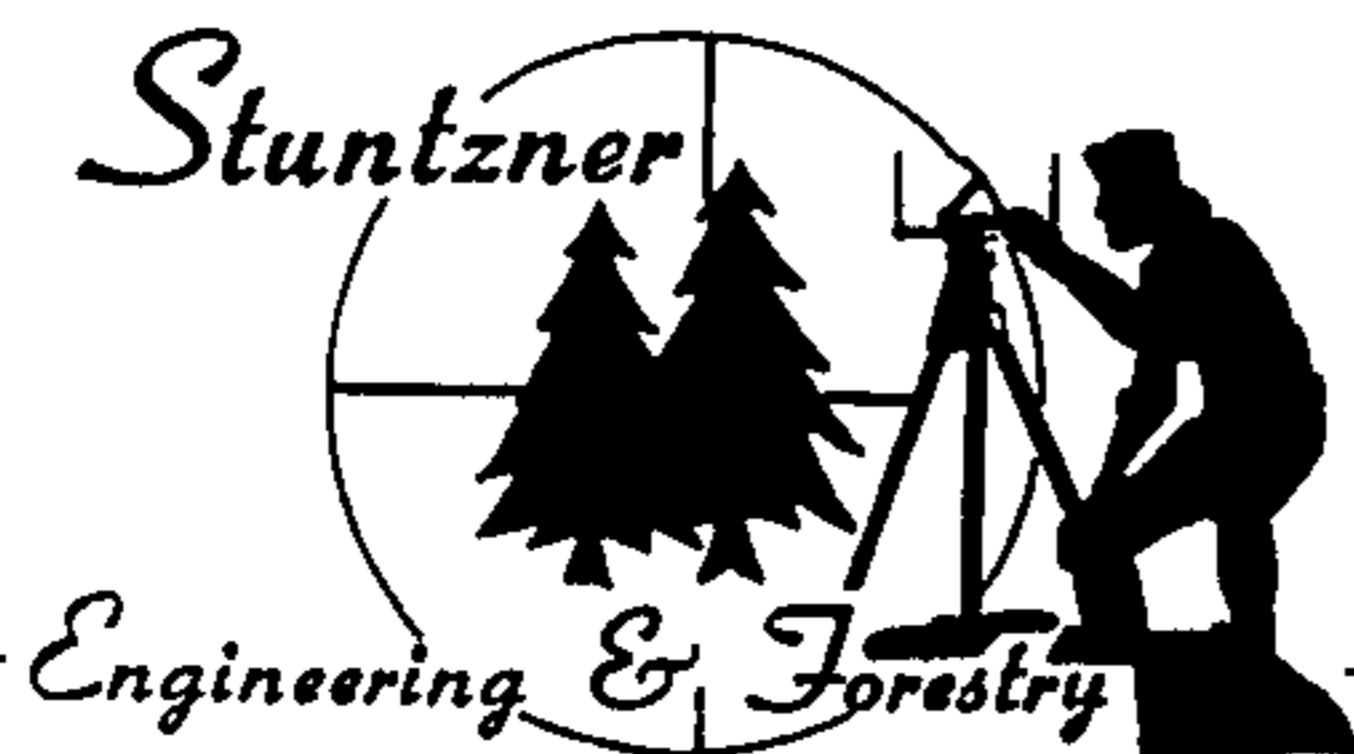
705 South 4th St. Phone: (503) 267-2872  
 Post Office Box 118 Coos Bay, Oregon 97420 Fax: (503) 267-0588

Drawn By: JERRY ESTABROOK	Date: AUGUST 19, 1994
Checked By: TOM HOSHALL	Drawing No.: 94-12335
Designed By:	Revised:
Job Name: TAHKENITCH TREE FARM SURVEY Sheet 4 of 4	

**COUNTY SURVEYORS FILE DATA  
 DO NOT REMOVE FROM OFFICE**

Map File M120-75 D  
 C.S. FILE: 63/145

C.S. FILE: 63/145  
 Map File M120-75 D



TELEPHONE (503) 267-2872  
FAX (503) 267 0588

705 SO 4TH, P.O. BOX 118  
COOS BAY, OREGON 97420

**Property survey located in Sections 14, 23, 26 and 35, Township 20 South, Range 12  
West, W.M., Douglas County, Oregon.**

FILED

Date: August, 1994

Survey for: Tahkenitch Tree Farm

Agent: Bob Crain  
P.O. Box 495  
Reedsport, Oregon 97467

Date 10-21-99 By JP  
This survey consists of 4 MAPS  
Map M 120-75 A-D  
Narrative C.S. 63/145 → 9 pgs  
Corner C.S. 63/145

DOUGLAS COUNTY

SURVEYOR

**Note:** See separate maps for survey details. Sheet 1 of 4 for Section 14, Sheet 2 of 4 for Section 23, Sheet 3 of 4 for Section 26, and Sheet 4 of 4 for Section 35.

Recorded in Douglas County, C.S. File # 63/145 and map file # M 120-75A-D

**Narrative:** The purpose of this survey was to delineate and mark Tahkenitch Tree Farm's boundary lines, located in Sections 14, 23, 26 and 35, as requested by Bob Crain.

I started a traverse at the Section Corner of Sections 13, 14, 23 and 24; thence to the 1/4 corner common to Sections 14 and 23; thence to the 1/4 corner common to Sections 14 and 15; thence to the Section Corner of Sections 11, 12, 13 and 14. This line from the 1/4 corner common to Section 14 and 15 to the Section Corner common to Sections 11, 12, 13 and 14 is my basis of bearing for this survey, which is from a solar observation performed in my survey of Section 11, dated November 15, 1992, C.S. #M 116-32.

I then calculated the position of the Section Corner common to Sections 10, 11, 14 and 15 and the 1/4 corner common to Sections 11 and 14 per C.S. # M 116-32. I then traversed to the 1/4 corner common to Sections 13 and 14; thence to the South 1/16 corner common to Sections 13 and 14; thence back to the Section Corner common to Sections 13, 14, 23 and 24 to close this traverse. Said closure exceeded 1:5000.

I then calculated the position of the C 1/4 corner of Section 14 at the intersection of the 1/4 Section lines. I then calculated the position of the C.E. 1/16 corner of Section 14 at a mid-point between the C 1/4 corner and the 1/4 corner common to Sections 13 and 14. I then calculated the position of the C.S. 1/16 corner of Section 14 at midpoint between the C 1/4 corner and the 1/4 corner common to Sections 14 and 23.

I then calculated and set a monument for the E 1/16 corner common to Sections 14 and 23 at a midpoint between the 1/4 corner common to Sections 14 and 23 and the Section corner common to Sections 13, 14, 23, and 24. I then calculated and set a monument for the SE 1/16

corner of Section 14 at the intersection of the 1/16 lines in the SE 1/4 of Section 14. I then flagged and blazed a boundary line that runs from the S 1/16 corner common to Sections 13 and 14 through the SE 1/16 corner of Section 14, thence through the E 1/16 corner common to Sections 14 and 23, thence to the Section corner common to Sections 13, 14, 23 and 24.

I then started a traverse at the 1/4 corner common to Sections 14 and 23, thence to the 1/4 corner common to Sections 22 and 23, thence to the 1/4 corner common to Sections 23 and 26, thence to the East 1/16 corner common to Sections 23 and 26, thence to the closing corner between Sections 23 and 24. Thence to the witness corner common to Sections 23 and 24; thence to the Section Corner common to Sections 13, 14, 23 and 24 to close my traverse. Said closure exceeded 1.5000.

I then calculated the position of the East 1/4 corner of Section 23 only at a midpoint between the Section corner common to Sections 13, 14, 23, and 24 and the closing corner common to Sections 23 and 24, on a line from the witness corner common to Sections 23 and 24 to the closing corner common to Sections 23 and 24. In 1960, W D Hootman subdivided Section 23, however, it has been noted by the Douglas County Surveyor and confirmed by the BLM (in recent conversation with John Gilson of the BLM) that the East 1/4 corner is not common with Section 24, we agree and therefore resubdivided the Section as follows:

I calculated and set a monument for the C 1/4 corner of Section 23 at the intersection of the 1/4 Section lines. I then calculated the position of the S 1/16 corner on the East boundary of Section 23 only at a midpoint between the E 1/4 corner of Section 23 and the closing corner common to Sections 23 and 24. I then calculated and set a monument for the N 1/16 corner on the East boundary of Section 23 only at a midpoint between the E 1/4 corner of Section 23 and the Section Corner common to Sections 13, 14, 23 and 24 on a line from the witness corner common to Sections 23 and 24 to the Section corner common to Sections 13, 14, 23 and 24.

I then calculated and set a monument for the CN 1/16 corner of Section 23 at a midpoint between the C 1/4 corner of Section 23 and the 1/4 corner common to Sections 14 and 23. I then calculated and set a monument for the CS 1/16 corner of Section 23 at a midpoint between the C 1/4 corner of Section 23 and the 1/4 corner common to Sections 23 and 26. I then calculated the position of the CE 1/16 corner of Section 23 at a midpoint between the C 1/4 corner of Section 23 and the E 1/4 corner of Section 23. I then calculated and set a monument at the intersection of the 1/16 lines in the SE 1/4 of Section 23. I then flagged and blazed a boundary line that runs from the 1/4 corner common to Sections 23 and 26 through the E 1/16 corner common to Sections 23 and 26; thence through the SE 1/16 corner of Section 23, thence through the CS 1/16 corner of Section 23, thence through the C 1/4 corner of Section 23, thence through the CN 1/16 corner of Section 23 to the N 1/16 corner on the east boundary of Section 23.

I then traversed from the 1/4 corner common to Sections 23 and 26 to the Section Corner common to Sections 26, 27, 34 and 35, thence to the meander corner common to Sections 26 and 35, thence to the meander corner common to Sections 35 and 36, thence to the vicinity of the 1/4 corner common to Sections 26 and 35; thence back to the 1/4 corner common to Sections 23 and 26 to close. Said closure exceeded 1.5000.

I then tied the shoreline of Tahkenitch Lake in the vicinity of the 1/4 corner common to Sections 26 and 35. Taking into account that the lake has been raised, I calculated a search point for the 1/4 corner common to Sections 26 and 35. I made an extensive search in the search point vicinity and found two fir stumps that I believe are the corner tree and the bearing tree described in the original GLO notes. I set a monument in the center of the corner tree stump. I then traversed from the 1/4 corner common to Sections 23 and 26 Southerly on the North/South 1/4 Section line 1978.91 feet to a point on the North/South 1/4 Section line. I then set a monument at said point on line and flagged and blazed said 1978.91 feet of boundary line. I then traversed from the Section corner common to Sections 1, 2, 35 and 36 to the 1/4 corner common to Sections 35 and 36; thence to the meander corner common to Sections 35 and 36, said traverse closure exceeded 1 5000

I then calculated and set a monument for the S 1/16 corner common to Sections 35 and 36. I then flagged and blazed a boundary line from the S 1/16 corner common to Sections 35 and 36, through the 1/4 corner common to Sections 35 and 36, to the meander corner common to Sections 35 and 36

Equipment used in this survey was a Wild T-1010 Theodolite and a Wild DI-1600 E D M

Assisting personnel were Jerry Estabrook, Bruce Webster and Paul Murphy.

**Corner Notes:**

- "A" Perpetuated original Section corner Sections 11, 12, 13 and 14.  
Found monument 3/4 inch iron rod with 2 inch aluminum cap marked T 20S, R.12W, S 11, S 12, S.13, S 14, 1992, L.S.1342 (C.S #M 116-32), with a 1 1/2 inch O.D. iron pipe (C.S #52/91) alongside  
Found BT's A 24 inch rotten spruce stump and tag bears North 74° East 17.0 feet (no record) An 18 inch rotten hemlock stump and tag bears South 69° East 12.8 feet (no record)  
A 9 inch fir and tag bears South 83° West 9.3 feet (no record)  
An 11 inch fir with tag and X-chop at B.H. bears North 15° West 11.35 feet (C.S #M 116-32)  
Found BO An iron fence post 4 feet high bears South 03° East 1.85 feet (no record)
- "B" Original 1/4 corner common to Sections 15 and 14  
Found monument: a 3/4 inch iron rod with 2 inch aluminum cap marked 1/4, S.14, S 15, 1992, L.S. 1342 (C.S #M 116-32), inside a 1 1/2 inch id iron pipe (C.S #52/91).  
Found BT's A 30 inch original fir stump with burnt face, visible scribing and tag bears North 70° East 2.0 feet to face  
A 24 inch spruce stump rotten to ground with tag bears North 79° West 23.1 feet to face (C.S #52/91)  
A 10 inch fir stump with X-chop and tag bears North 08° East 3.52 feet (C.S #M 116-32)  
An 18 inch fir stump with X-chop and tag bears South 85° West 15.40 feet (C.S. #M 116-32).  
Found BO A 4 foot high aluminum post bears North 23° East 2.0 feet (C.S. #M 116-32).

- "C" Original 1/4 corner Section 13 and 14  
Found Monument A 3/4 inch iron rod with 2 inch aluminum cap marked 1/4, S.14, S 13, L.S. 1342, 1987 (M 101-31)  
 Inside a 2 inch iron pipe (Ren. #55).  
Found BT's. Original 30 inch spruce with healed face and tag bears North 47° West 21 12 feet (North 62° West 21 12 feet GLO)  
 Original 48 inch spruce now a stump bears East 26.40 feet (GLO)  
 A 26 inch spruce visible scribe with X-chop and tag at B H bears South 02° West 21 3 feet (M 101-31)  
 An 18 inch spruce visible scribe with X-chop and tag at B.H bears North 85° West 35 6 feet (M 101-31).
- "D" Southeast 1/16 corner Section 14  
Monument set A 3/4 inch X 30 inch iron rod with 2 inch aluminum cap marked Stuntzner Engineering SE 1/16, S.14, 1994, L.S. 1342  
BT's Marked A 16 inch hemlock face scribed "SE 1/16 S.14 BT" with X-chop and tag at BH bears North 17° West 9.42 feet to a spike at side center.  
 A 9 inch hemlock face scribed "SE 1/16 S 14 BT" with X-chop and tag at BH bears South 58° West 17 46 feet to a spike at side center
- "E" South 1/16 corner Section 14 and Section 13  
Found Monument A 3 inch brass cap on a 1 inch iron pipe (M22-36)  
Found BT's A 25 inch hemlock with healed face and tag bears North 80° East 33 0 feet (M22-36)  
 An 84 inch spruce stump with tag, no visible marks bears South 78° West 21.0 feet to facing edge of stump (M22-36).
- "F" Original 1/4 corner Section 14 and Section 23  
Found Monument A 2 inch iron pipe as shown in (M11-77)  
New Monument Set: A 3/4 inch x 30 inch iron rod with 2 inch aluminum cap marked Stuntzner Engineering, 1/4. S 14, S 23, 1994, L S 1342 Placed in the center of the 2 inch iron pipe  
Found BT's: A 30 inch spruce stump bears North 61° East 32 8 feet to center (North 61° East 30 9 feet Corbitt Ren. #66).  
 A 27 inch fir with healed face and tag bears South 12° West 16 9 feet to side center (South 12° West 17 7 M11-77)  
 A 48 inch spruce stump bears South 81° West 17.8 feet (S 81° W 15 9 feet Corbitt Ren #66)  
New BT's Marked An 18 inch hemlock face scribed "N 1/4 S23 BT" with X-chop and tag at B H bears South 57° East to spike at side center, 7 0 feet
- "G" East 1/16 corner Section 14 and Section 23  
Found Monument: One inch iron pipe out of position laying on ground (M11-77).  
New Monument Set: A 3/4 inch x 30 inch iron rod with 2 inch aluminum cap marked Stuntzner Engineering, E 1/16, S14, S23, 1994, L.S. 1342

New BT Marked. A 10 inch spruce face scribed "E 1/16 S14 BT" with X-chop and tag at B H bears North  $14^{\circ}$  West 49.8 feet to spike at side center

New BO Set A one inch iron pipe bears South  $05^{\circ}$  West 33 feet

Note: This corner falls 15 feet South of road center line

"H" Original Section Corner Section 13, 14, 23 and 24.

Found Monument A 3/4 inch iron rod with 2 inch aluminum cap (M101-31)

Found BT's: A 16 inch hemlock snag visible scribe bears North  $03^{\circ}$  West 38.1 feet (M101-31).

A 32 inch spruce stump, visible scribe bears South  $01^{\circ}$  East 43.6 feet (M101-31).

A 9 inch hemlock, visible scribe bears South  $79^{\circ}$  West 5.5 feet (M101-31)

"I" CN 1/16 corner Section 23.

Monument Set A 3/4 inch x 30 inch iron rod with 2 inch aluminum cap marked Stuntzner Engineering CN 1/16, South 23, 1994, L S 1342.

BT's Marked A 33 inch spruce face scribed "CN 1/16 S23 BT" with X-chop and tag at BH bears North  $21^{\circ}$  East 18.4 feet to spike at side center.

A 37 inch spruce face scribed "CN 1/16 S23BT" with X-chop and tag at BH bears North  $47^{\circ}$  West 48.0 feet to spike at side center

BO: A 3/4 inch iron pipe bears North  $25^{\circ} 36' 50''$  East 12.94 feet (M11-77)

"J" North 1/16 corner on the East boundary of Section 23 only

Monument Set. A 3/4 inch x 30 inch iron rod with 2 inch aluminum cap marked Stuntzner Engineering, N 1/16, S23, 1994, L.S 1342.

BT's Marked A 17 inch spruce face scribed "N 1/16 S23BT" with X-chop and tag at BH bears North  $58^{\circ}$  West 12.0 feet to spike at side center

A 16 inch spruce face scribed "N 1/16 S23 BT" with X-chop and tag at B H. bears South  $09^{\circ}$  West 15.14 feet to spike at side center

Note Hootman's N 1/16 corner for Section 24, which is a badly rusted one inch iron pipe (M11-77) bears North  $00^{\circ} 18' 44''$  West 5.03 feet I set a 3/4 inch x 30 inch iron rod with two inch aluminum cap marked Stuntzner Engineering, N 1/16, S24, 1994, LS 1342 in the center of Hootman's one inch iron pipe.

"K" Original witness corner - no monument found

Set New Monument: A 3/4 inch x 30 inch iron rod with two inch aluminum cap marked Stuntzner Engineering WC, S23, S24, 1994, LS 1342

Found BT: Original 100 inch spruce, now a stump bears South  $03^{\circ}$  West 17.82 feet (GLO) Put new tag on stump

New BT Marked A 13 inch alder bark scribed "WC S24 BT" with tag at BH bears  $S57^{\circ}$  East 6.1 feet to side center.

"L" 1/4 corner Section 22 and Section 23.

Found Monument A 3/4 inch iron pipe (M11-77)

New Monument Set A 3/4 inch x 30 inch iron rod with two inch aluminum cap marked Stuntzner Engineering 1/4, S22, S23, 1994, L S 1342 Set in the center of iron pipe

Found BT's: A 20 inch fir stump bears North  $19^{\circ}$  West 17.9 feet (M11-77) Scribed "BT" on new face

- New BT's A 22 inch fir stump face scribed "BT" bears North 85° East 8 6 feet to center  
 A 75 inch spruce stump bears South 78° East 43 2 feet to center, not tagged or marked.  
 A 60 inch spruce stump bears North 19° West 58 3 feet to center, not tagged or marked
- "M" C 1/4 corner Section 23  
Monument Set A 3/4 inch x 30 inch iron rod with 2 inch aluminum cap marked  
 Stuntzner Engineering, C 1/4, S23, 1994, L S 1342  
BT's Marked A 37 inch spruce face scribed "C 1/4 S23 BT" with X-chop and tag at  
 B H bears South 58° East 19 4 feet to spike at side center  
 A 9 inch fir face scribed "C 1/4 S23 BT" with X-chop and tag at B H bears North 67°  
 West 23 6 feet to spike at side center.  
 A 56 inch fir stump bears North 37° West 59.8 feet to center Hootman BT.  
 A 52 inch fir stump bears North 36° East 37.5 feet to center. Hootman BT  
 Note Hootman's iron pipe not found
- "N" CS 1/16 corner Section 23  
Monument Set: A 3/4 inch x 30 inch iron rod with 2 inch aluminum cap marked  
 Stuntzner Engineering CS 1/16, S23, 1994, L.S. 1342.  
BT's Marked: A 34 inch spruce face scribed "CS 1/16 S23 BT" with X-chop and tag  
 at B H bears South 06° East 19 2 feet to spike at side center  
 A 25 inch spruce face scribed "CS 1/16 S23 BT" with X-chop and tag at B.H bears  
 North 70° West 25 9 feet to spike at side center.  
BO: A 1 inch iron pipe bears North 09° 55' 39" West 19 12 feet (M11-77)
- "O" Southeast 1/16 corner Section 23.  
Monument Set: A 3/4 inch x 30 inch iron rod with 2 inch aluminum cap marked  
 Stuntzner Engineering, SE 1/16, S23, 1994, L S 1342  
BT's Marked A 16 inch fir face scribed "SE 1/16 S23 BT" with X-chop and tag at B.H.  
 bears North 18° East for 16 2 feet to a spike at side center  
 A 14 inch fir face scribed "SE 1/16 S23 BT" with X-chop and tag at B H. bears South  
 35° East for 10 1 feet to a spike at side center
- "P" Original 1/4 corner common to Sections 23 and 26  
Found Monument. A 1 1/2 inch iron pipe (CS 52/91).  
New Monument Set: A 3/4 inch x 30 inch iron rod with 2 inch aluminum cap marked  
 Stuntzner Engineering, 1/4, S23, S26, 1994, L S. 1342  
Found BT's A 28 inch spruce stump with healed face and tag bears North 53° East for  
 29.3 feet (CS #51/165)  
 A 44 inch fir stump with visible scribe and tag bears South 25° West for 16 5 feet  
 (original)  
New BT's Marked A 16 inch spruce face scribed "S 1/4 S23 BT" with X-chop and tag  
 at B H bears North 65° East for 12.9 feet to a spike at side center.  
 A 15 inch fir face scribed "N 1/4 S23 BT" with X-chop and tag at B H. bears South 50°  
 East for 22 1 feet to a spike at side center

- "Q" East 1/16 corner common to Sections 23 and 26  
Found Monument: A 1 inch iron pipe (CS #51/165)  
New Monument Set: A 3/4 inch X 30 inch iron rod with 2 inch aluminum cap marked Stuntzner Engineering, East 1/16, S23, S26, 1994, L S. 1342, at position of 1" iron pipe  
Found BT's: A 48 inch fir stump bears South 31° 30' West for 33 6 feet (CS #51/165). A 90 inch fir stump bears North 46° 15' West for 53 0 feet (CS #51/165).  
New BT's Marked: A 16 inch fir face scribed "E 1/16 S23 BT" with X-chop and tag at B H bears North 74° East for 2 0 feet to a spike at side center.  
 An 11 inch spruce face scribed "E 1/16 S23 BT" with X-chop and tag at B H bears South 65 ° West for 8 9 feet to a spike at side center
- "R" Closing corner common to Sections 23 and 24  
Found Monument: A 1 inch iron pipe (as shown per CS #51-249).  
New Monument Set: A 3/4 inch x 30 inch iron rod with 2 inch aluminum cap marked Stuntzner Engineering, T20S, R12W, S23, S24, CC, 1994, L S 1342  
Found BT's: A 30 inch rotten hemlock stump bears North 23° 30' West for 19 8 feet to face (original).  
 A 46 inch fir snag with visible scribe and tag bears North 79° East for 17.9 feet  
New BT's Marked: A 21 inch fir face scribed "CC S24 BT" with X-chop and tag at B.H bears North 39° East for 22 2 feet to a spike at side center  
 A 14 inch spruce face scribed "CC S23 BT" with X-chop and tag at B H. bears North 74° West for 13 0 to a spike at side center
- "S" Original Section corner common to Sections 25 and 26 only  
Found Monument: A 1 inch iron pipe inside the rusted remains of a 3 inch iron pipe (as shown per CS #51/249).  
New Monument Set: A 3/4 inch x 30 inch iron rod with 2 inch aluminum cap marked Stuntzner Engineering, T20S, R12W, S24, S25, S26, 1994, L.S 1342, at position of 1" I P.  
Found BT's: A 36 inch spruce stump bears North 55° West for 8 58 feet (original). A 48 inch spruce stump bears South 76° West for 26 4 feet (original)  
New BT's Marked: A 16 inch fir face scribed "T 20S R12W S24 BT" with X-chop and tag at BH bears North 58° East for 9 0 feet to spike at side center  
 A 14 inch hemlock face scribed "T20S R12W S26 BT" with X-chop and tag at B H bears South 74° West for 22.6 feet to a spike at side center
- "T" Point on property line  
Monument Set: A 3/4 inch X 30 inch iron rod with 2 inch aluminum cap marked Stuntzner Engineering, property line, 1994, L S 1342  
BT's Marked: An 8 inch hemlock face scribed "BT" with X-chop and tag at B H bears North 67° East for 14 2 feet to a spike at side center  
 An 8 inch fir face scribed "BT" with X-chop and tag at B H bears South 49° West for 8 4 feet to a spike at side center

- "U" Section corner common to sections 26, 27, 34 and 35  
Found Monument A 2 1/2 inch brass cap on a 1 1/4 inch iron pipe along side a rusted 2 inch iron pipe marked Douglas County Surveyors Office, T20S, R12W, S26, S27, S34 and S35, 1994  
Found BT's: A 48 inch spruce stump with visible scribe and tag bears South 64° East for 12.7 feet (original 11.22 feet)  
The rotten remains of a spruce bears South 88° West for 73 2 feet (original 65 34 feet).  
An 88 inch spruce stump with tag bears North 66° 30' West for 43 5 feet (original N61W 35 64 feet)  
A 6 inch spruce face scribed and tag bears North 34° West for 29 1 feet  
A 38 inch spruce stump with tag bears North 83° 30' East for 38 8 feet  
A 29 inch spruce stump with tag bears South 58° 30' West for 17.9 feet.
- "V" Original meander corner common to Sections 26 and 35  
Found Monument A 2 1/2 inch brass cap on a 1 1/4 inch iron pipe alongside a rusted 2 inch iron pipe marked Douglas County Surveyors Office, T20S, S26, S35, MC, 1994  
Found BT's A 7 foot spruce stump with open face visible scribe and tag bears South 10° East for 22 4 feet (original South 18° East 22 4 feet)  
A 48 inch hemlock with visible scribe and tag bears South 73° West for 29 5 feet to side center  
An 18 inch cascara with visible bark scribe and tag bears North 06° 30' West for 18 4 feet to side center.  
A 17 inch alder with visible bark scribe and tag bears North 68° East for 29 3 feet to side center
- "W" Original 1/4 corner common to Sections 26 and 35  
Found Monument: A 58 inch fir stump (original corner tree)  
New Monument A 3/4 inch x 30 inch iron rod with 2 inch aluminum cap marked Stuntzner Engineering, 1/4, S26, S35, 1994, L S 1342, in stump  
Found BT's A leaning 44 inch fir stump bears South 69° West for 14 5 feet to a point where center of stump would be if leaned back into position (original)  
New BT's Marked: A 13 inch spruce face scribed "S 1/4 S26 BT" with X-chop and tag at B.H. bears North 13° West for 8 9 feet to a spike at side center.  
An 11 inch cherry bark scribed "S 1/4 S26 BT" with X-chop and tag at B.H. bears North 76° East for 8 2 feet to a spike at side center  
A 27 inch spruce face scribed "N 1/4 S35 BT" with X-chop and tag at B H bears South 57° West for 32.0 feet to a spike at side center
- "X" Meander corner common to Sections 35 and 36  
Found Monument A 2 inch iron pipe 2 feet high in lake (CS #52/91)  
New Monument Set A 3/4 inch x 5 foot iron rod with 2 inch aluminum cap marked Stuntzner Engineering, MC, S35, S36, 1994, L.S. 1342.  
New BT's Marked: A 37 inch spruce face scribed "MC S36 BT" with X-chop and tag at B H bears South 13° East for 66 0 feet to a spike at side center  
A 13 inch alder bark scribed "MC S35 BT" with X-chop and tag bears Southwest along shoreline.  
BO The shoreline bears South 2 feet

- "Y" Original 1/4 corner common to Sections 35 and 36  
Found Monument: 2 inch iron pipe (CS #52/91)  
New Monument Set: A 3/4 inch x 30 inch iron rod with 2 inch aluminum cap marked Stuntzner Engineering, 1/4, S35, S36, 1994, L S 1342 Set inside 2 inch iron pipe  
Found BT's An 83 inch fir stump with visible scribe bears South 06° 30' East for 43.7 feet to nail in face (CS #52/91).  
 A 48 inch fir stump with tag bears North 35° West for 9.25 feet to nail in face (CS #52/91)  
 Possible cedar root bowl bears South 18° West for 9 24 feet (original)  
New BT's Marked. A 19 inch hemlock face scribed "W1/4 S36 BT" with X-chop and tag at B.H bears North 75° East for 3 82 feet to a spike at side center  
 A 10 inch hemlock face scribed "E 1/4 S35 BT" with X-chop and tag at B.H. bears South 02° West for 9 76 feet to a spike at side center.
- "Z" South 1/16 corner common to Sections 35 and 36  
Monument Set A 3/4 inch x 30 inch iron rod with 2 inch aluminum cap marked Stuntzner Engineering, S 1/16, S35, S36, 1994, L S. 1342.  
BT Marked. An 11 inch spruce face scribed "S 1/16 S35 BT" with X-chop and tag at B H. bears South 84° West for 165 44 feet to a spike at side center  
BO's A power pole, center of 3 bears North 07° East for 146.6 feet to side center  
 An iron fence post bears East 0 8 feet
- "AA" Section corner common to Sections 35, 36, 2 and 1  
Found Monument A 2 1/2 inch brass cap on 2 inch iron pipe marked T20S, R12W, 35, 36, 2, 1, 1979, PLS 491, with 1 1/2 inch iron pipe lying along side (CS #58/140)  
Found BT's. A 20 inch hemlock with healed face and tag bears South 13° West for 40 2 feet (CS #58/140)  
 A 15 inch spruce with healed face and tag bears North 50° 30' West for 53.8 feet (CS #58/140)  
 A 48 inch fir stump bears North 78° East for 1.0 feet to face (CS #58/140).  
BO An iron fence post bears North 66° East for 1 2 feet

### Record Reference Information

Douglas County Record of Government corners renewed, Renewal #51, Renewal #52,, Renewal #53, Renewal #60, Renewal #62, Renewal #66, Renewal #81, Renewal #97, Renewal #108, Renewal #110, Renewal #37 and Renewal #38.

Map #11-77, CS #51/165, by Warren D. Hootman, dated July 28, 1960.  
 Map #22-36, CS #51/249, by Warren D Hootman, dated January 30, 1963  
 Map #M116-32, by Ronald E Stuntzner, dated November 15, 1992.  
 G L O Contract #69, dated February 2, 1857, performed by Harvey Gordon.  
 G.L O Contract #745, dated May 1, 1902, performed by Wm H. Byars  
 CS #52/91, by W.G Corbitt, dated 1943  
 CS #58/140, by Richard J. Hintz, dated 1980  
 Map #M101-31, by Clyde Mulkins, dated October 30, 1987

survey#1/tahkenut ch

