

LONE ROCK TIMBER CO.

PO BOX 1127 ROSEBURG, OREGON 97470 JUNIPER PROPERTIES LIMITED PARTNERSHIP
SECTION 24, TOWNSHIP 23 SOUTH, RANGE 4 WEST, W.A. DOUGLAS COUNTY, OREGON

SCALE: 1" = 400' DATE: AUGUST 1994

FILED

Date: 10-4-94 by: JP

This survey consists of:

Map: M120-66

Narrative: _____

Corner Rpt: _____

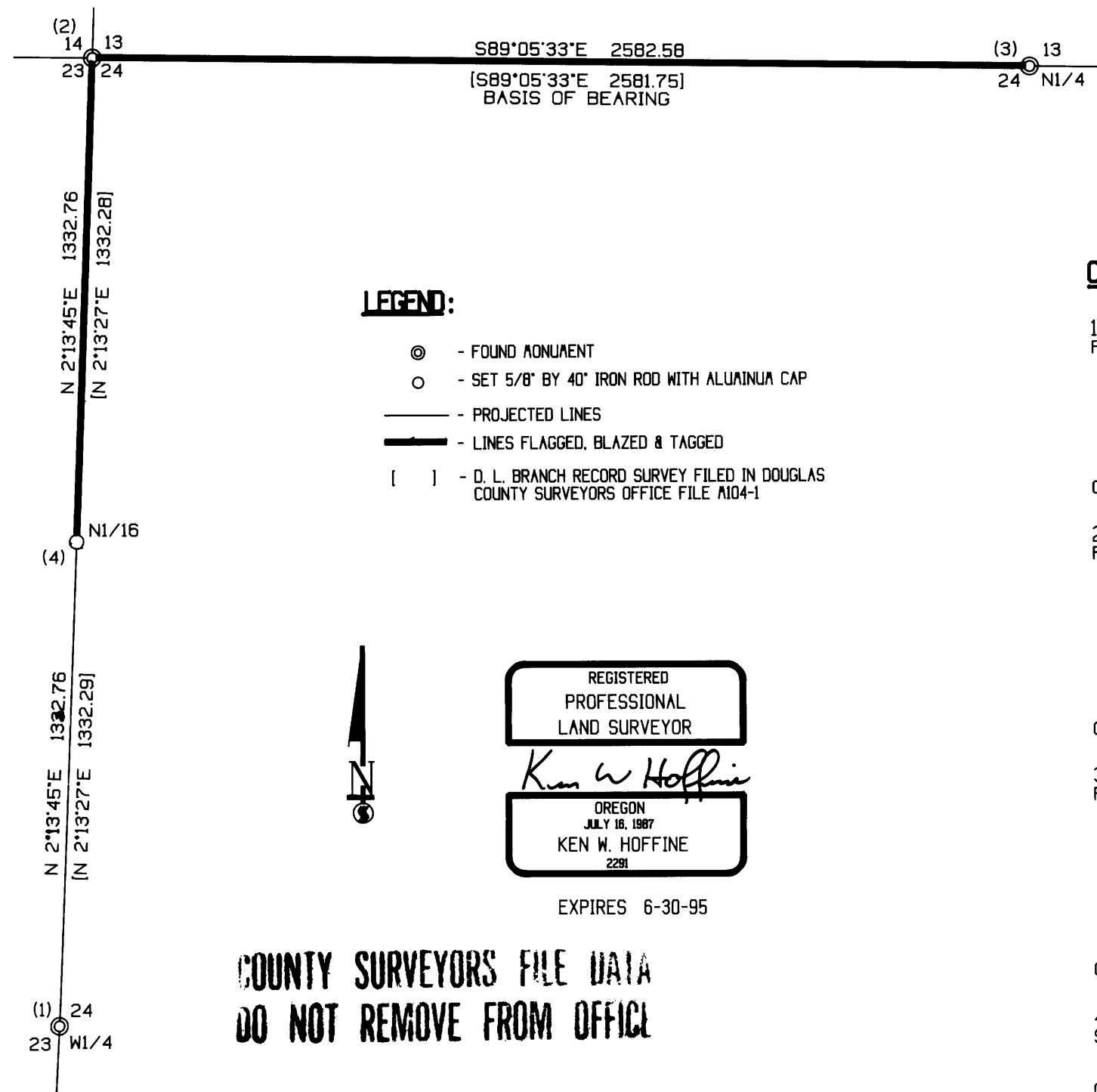
DOUGLAS COUNTY SURVEYOR

NARRATIVE

THIS SURVEY WAS CONDUCTED TO ESTABLISH PROPERTY LINES FOR TIMBER CUTTING PURPOSES. WE BEGAN THIS SURVEY AT THE WEST 1/4 OF SECTION 24 WHICH IS A HAINES T-BAR SET FROM ORIGINAL EVIDENCE. WE BEGAN A RANDOM TRAVERSE IN A NORTHERLY DIRECTION TO THE NORTHWEST CORNER OF SECTION 24 A BLM BCIP SET OVER HAINES T-BAR SET FROM ORIGINAL EVIDENCE NO LONGER REMAINING. WE CLOSE OUR TRAVERSE RETURNING TO THE W 1/4 SETTING THE NORTH 1/16 BETWEEN SECTIONS 23 AND 24 AT PROPORTIONATE DISTANCE. WE RETURN TO THE NORTHWEST CORNER OF SECTION 24 AND RAN A RANDOM LINE EASTERLY TO THE N 1/4 OF SECTION 24 A COUNTY BCIP SET FROM ORIGINAL EVIDENCE WHICH WE CHECK VERY CLOSELY WITH BRANCHES SURVEY FOR THESE CORNERS. WE MARK THE PROPERTY LINES AS SHOWN HEREON BY FLAGGING, BLAZING AND PAINTING TREES. THE SURVEY WAS DONE WITH A LIETZ SET 2 TOTAL STATION WITH GARY ANGIOLET AND JERRY RAGON ASSISTING ME.

CORNER INFORMATION

- 1) WEST 1/4 SECTION 24
FOUND: HAINES T-IRON 0.7 FEET ABOVE GROUND.
-- 8" HEALOCK BEARS N88°E, 11.1 FEET, AN "X" WAS CARVED IN FACE. WE TAGGED
-- 58" FIR STUMP BEARS N65°E, 17.2 FEET, HAS HAINES BUTTON, NO TAG
-- 13" DOWN AND BROKEN HEALOCK BEARS N46°E (TAG SHOWS N52°E), 14.7 FEET, SCRIBING VISIBLE ON STANDING BASE
-- 10" YEW BEARS N24°W, 34.2 FEET, VISIBLE SCRIBING IN FACE WITH BLM TAG
-- 36" FIR STUMP COVERED WITH TIN CAP BEARS S88°W, 46.2 FEET TO THE FACE, HAS HAINES BUTTON, BARK SCRIBED, WE TAG TREE.
CORNER LIES IN GENTLE GROUND AMONG REPROD TO THE WEST AND YOUNG TREES TO THE EAST.
- 2) NORTHWEST CORNER OF SECTION 24
FOUND: BLM BRASS CAP FLUSH TO THE GROUND.
-- 22" DOUGLAS FIR STUMP WITH TIN CAP BEARS S58°W, 63.1 FEET, BARK HAS BEEN REMOVED, NO VISIBLE VISIBLE FACE
-- 12" DOUGLAS FIR STUMP WITH TIN CAP BEARS N72 1/2°W, 8.5 FEET, BARK HAS BEEN REMOVED, NO FACE OR TAG VISIBLE
-- 25" DOUGLAS FIR STUMP WITH TIN CAP BEARS S21°E, 28.0 FEET, BARK HAS BEEN REMOVED, VISIBLE SCRIBING, NO TAG
-- 21" DOUGLAS FIR STUMP WITH TIN CAP BEARS N12°E, 37.9 FEET, BARK HAS BEEN REMOVED EXCEPT FOR THE FACE WHICH HAS BARK SCRIBING
-- 2" DOUGLAS FIR BEARS N63°W, 5.8 FEET, NO SCRIBING WE TAGGED
CORNER LIES IN YOUNG REPROD WITH MATURE STAND 150 FEET TO THE SOUTH.
- 3) NORTH 1/4 SECTION 24
FOUND: COUNTY SURVEYOR'S BRASS CAP 0.5 FEET ABOVE GROUND.
-- 32" DOUGLAS FIR 3 FOOT STUMP BEARS N3°06'W, 14.2 FEET (RECORD N4°W, 14.4 FEET), BARK HAS BEEN REMOVED CHEMICAL TREATED WITH TIN CAP
-- 23" DOUGLAS FIR 6 FOOT STUMP BEARS N20°48'E, 27.3 FEET, BARK HAS BEEN REMOVED CHEMICAL TREATED WITH TIN CAP, SCRIBING IS VISIBLE
-- 17" DOUGLAS FIR 20 FOOT TALL SNAG BEARS N55°25'E, 16.6 FEET (RECORD N57°E, 16.4 FEET) CHOPPED OUT FACE SCRIBING VISIBLE
-- 24" DOUGLAS FIR 4 FOOT STUMP THAT HAS BEEN TIPPED OVER BEARS S28°43'E, 9.5 FEET
-- 14" HEALOCK NORTHEAST STEM OF SCHOOLMARM BEARS S21°32'W, 7.5 FEET (RECORD S24°W, 7.57 FEET), WELL HEALED SCAR
CORNER LIES ON A GENTLE WESTERLY SLOPE WITH YOUNG REPROD TO EAST AND YOUNG TIMBER TO THE WEST.
- 4) NORTH 1/16 BETWEEN SECTION 23 AND SECTION 24
SET 5/8" X 40" IRON ROD WITH 2 1/2" ALUMINUM CAP MARKED LONE ROCK TIMBER N 1/16 S23 S24 1994 PLS 2291.
-- 15" DOUGLAS FIR BEARS N72°E, 20.5 FEET, WE SCRIBE N 1/16 S24 B.T. AND TAG TREE
-- 36" LOW DOUGLAS FIR STUMP BEARS N61°W, 41.7 FEET, WE SCRIBE N 1/16 S23 B.T. AND TAG STUMP
CORNER LIES ON STEEP NORTHWEST FACING SLOPE. A SHALLOW DRY DRAW BEARS EAST APPROXIMATELY 30 FEET. CLEARCUTS TO THE WEST AND SOUTHEAST OF CORNER.



MAP FILE M120-66

MAP FILE M120-66