

# RECORD OF SURVEY

SECTION 19, T.26S., R.3W., W.M.

SCALE: 1" = 400' AUGUST, 1994

FILED

Date: 10-4-94 By: JC  
 This survey consists of:  
 Map: M120-65  
 Narrative:  
 Corner Rpt:

SURVEYED FOR:  
 DOUGLAS COUNTY  
 JUSTICE BUILDING  
 ROSEBURG, OR. 97470

DOUGLAS COUNTY  
 SURVEYOR

SURVEYED BY:  
 BTS ENGINEERING & SURVEYING INC.  
 431 S.E. MAIN STREET  
 ROSEBURG, OR 97470  
 (503) 673-0966 FAX (503) 673-0105

### LEGEND

- = FD. CORNER, AS NOTED
- ⊙ = FD. 5/8" I. ROD PER 1992-0067
- ⦿ = FD. BCIP, AS NOTED.
- = SET 5/8" X 30" IRON ROD WITH PLASTIC CAP MK'D. "BTS ENG-SURV"
- ▲ = POINT COMPUTED, NOT SET
- < > = RECORD CALLS PER GLO RECORDS
- ( ) = RECORD CALLS PER GLIDE PLAT "A"
- [ ] = RECORD CALLS PER 1992-0067
- (( )) = RECORD CALLS PER M16-76

LINE	BEARING	DISTANCE	RECORD
L 1	S 00°31'49"E	320.80'	< SOUTH 4.86 CH.>
L 2	N 00°34'40"E	30.00'	[ S 1°12'27" W, 30.00' ]
L 3	S 89°42'58"W	231.06'	
L 4	S 81°15'00"W	182.82'	
L 5	N 89°37'37"W	97.97'	[ N 88°58' W, 98.00' ]
L 6	N 88°48'38"W	47.47'	EAST 46.0' PER PLSS ID NO. 046030

### SURVEY NARRATIVE:

THE PURPOSE OF THIS SURVEY WAS TO MONUMENT A POINT ON THE NORTH-SOUTH CENTERLINE OF SECTION 19 AS A CONDITION OF THE STIPULATED ORDER FOR CIRCUIT COURT CASE NO. 77--785 BETWEEN DOUGLAS COUNTY AND MACK E. BROWN. THE POSITION OF THE NORTH 1/4 CORNER WAS COMPUTED FROM THE WITNESS CORNER AND A MONUMENT FOUND PER LAND PARTITION 1992-0067. THE SOUTH 1/4 CORNER AS SEARCHED FOR AND NO EVIDENCE WAS FOUND, THEREFORE, ITS POSITION WAS COMPUTED BY SINGLE PROPORTIONATE MEASUREMENT BETWEEN THE SE AND SW CORNERS OF SECTION 19. THE POSITION OF THE SE CORNER WAS COMPUTED AT RECORD BEARING AND DISTANCE FROM THE FOUND WITNESS CORNER. THE E 1/4 CORNER AND THE NE CORNER WERE TIED AND ARE SHOWN FOR INFORMATIONAL PURPOSES ONLY. THE W 1/4 CORNER AND THE NW CORNERS WERE NOT TIED BUT THEIR POSITIONS WERE COMPUTED FROM BTS CONTROL POINTS FROM LAND PARTITION 1990-0052 THAT WERE TIED UNDER THIS SURVEY AND ARE SHOWN FOR INFORMATIONAL PURPOSES ALSO. THE NE AND SSE CORNERS OF DLC NO. 46 AND THE NW CORNER OF DLC NO. 43 WERE TIED. A THOROUGH SEARCH FOR THE NW CORNER OF DLC NO. 46 WAS CONDUCTED BUT NO REMAINING ORIGINAL EVIDENCE WAS FOUND. A PROPORTIONAL POSITION FOR THE NW CORNER OF DLC NO. 46 WAS THEN COMPUTED BY THE BROKEN BOUNDARY METHOD--SECTION 5-43 OF THE MANUAL OF SURVEYING INSTRUCTIONS, 1973, BETWEEN THE NE CORNER OF DLC NO. 46 AND THE NW CORNER OF DLC NO. 43. THE INTERSECTION OF THE NORTH LINE OF DLC NO. 46 AND THE NORTH-SOUTH CENTERLINE OF SECTION 19 WAS THEN MONUMENTED.

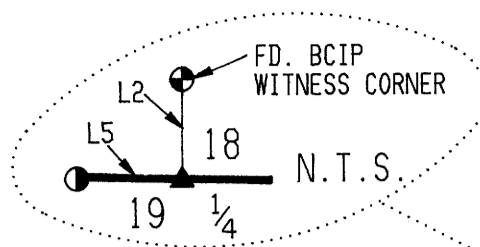
THIS SURVEY WAS PERFORMED BY LES FANNING AND MATT DIXON USING A SOKKIA SET 4 TOTAL STATION WITH COMPUTATIONS BY KRIS DEGROOT AND DRAFTING BY BILL WARREN.

REGISTERED  
 PROFESSIONAL  
 LAND SURVEYOR

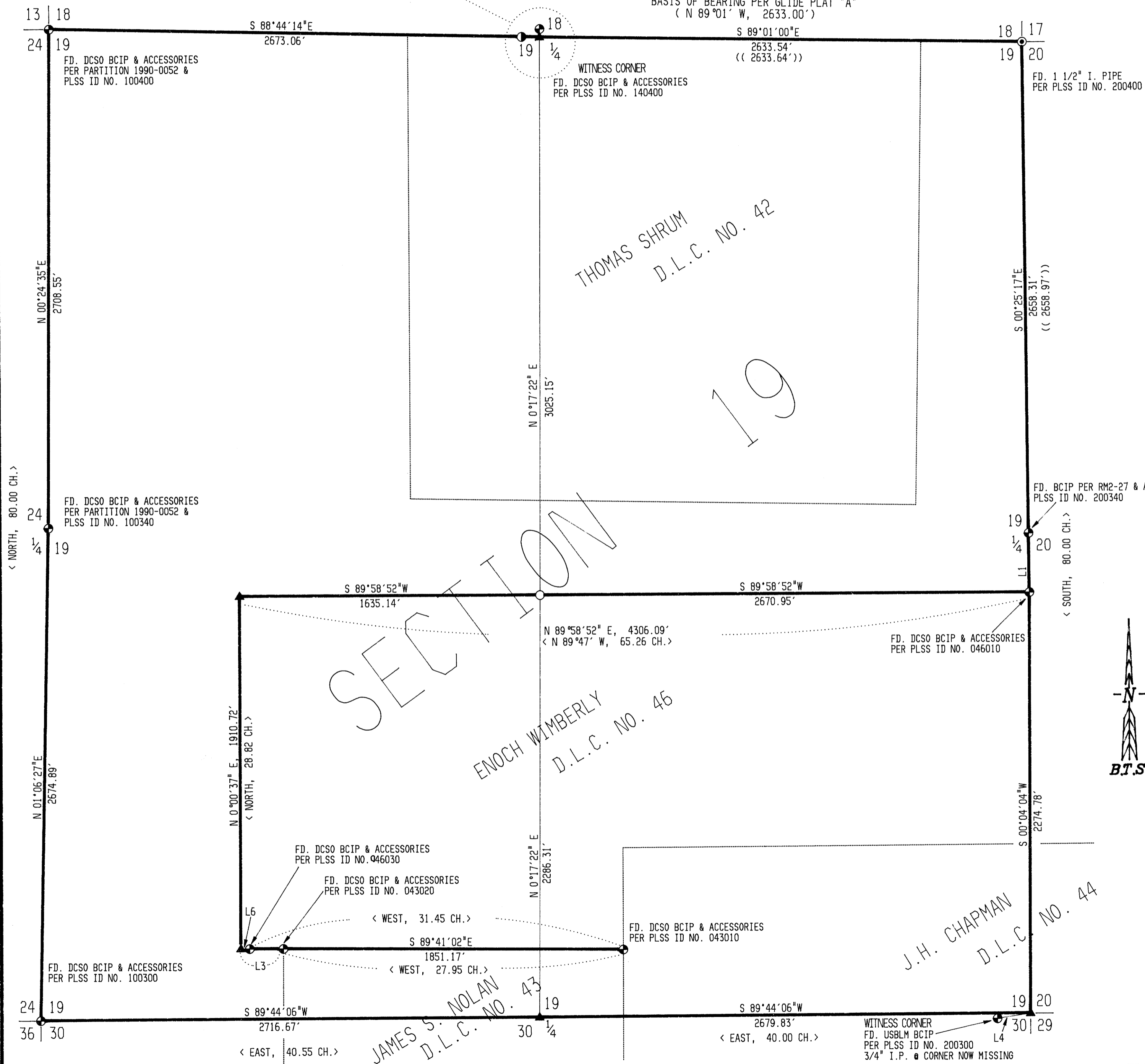
*Kristian O. Degroot*  
 OREGON  
 JULY 17, 1981  
 KRISTIAN O. DEGROOT  
 1841

COUNTY SURVEYORS FILE D.Y.  
 DO NOT REMOVE FROM OFFICE

EXPIRES: 12-31-95



BASIS OF BEARING PER GLIDE PLAT "A"  
 ( N 89°01' W, 2633.00' )



MAP FILE M120-65