

FILED

Date: 8-24-94 By: JP  
This survey consists of:  
Map: M120-55  
Narrative:  
Corner Rpt:

DOUGLAS COUNTY  
JP SURVEYOR JP

### NARRATIVE

THIS SURVEY WAS MADE IN JUNE, JULY, AND AUGUST OF 1994 BY DAVID H. WELLMAN, OF BAKER AND ASSOCIATES, SURVEYORS, 1385 OAK STREET, SUITE 3, EUGENE, OREGON. THE PURPOSE OF THIS SURVEY WAS TO LOCATE AND MARK, IN THE FIELD, THE WEST LINE OF WEYERHAEUSER COMPANY OWNERSHIP IN SECTION 36, T20S, R6W, W.M.. A WILD T1000 WITH DI1600 EDM WAS USED TO PERFORM THE SURVEY, WITH A MINIMUM ERROR OF CLOSURE OF 1:35000 BEFORE ADJUSTMENT. THE BASIS OF BEARING FOR THIS SURVEY WAS BY SOLAR OBSERVATION AS COORDINATED WITH PREVIOUS WORK BY THIS COMPANY ALONG THE SOUTH LINE OF SECTION 36. THE NORTHWEST AND SOUTHWEST SECTION CORNERS WERE FOUND AND USED FOR CONTROL. NEAR THE CALCULATED POSITION FOR THE 1/4 CORNER A 3/4" PIPE WAS FOUND WITH EVIDENCE OF BEARING TREES ALL SET IN 1978 BY THE DRAIN ENGINEERING GROUP OF THE BLM. WHEN CONTACTED, THEY COULD NOT FIND ANY DOCUMENTATION OF A SURVEY IN THIS SECTION. NO ORIGINAL BEARING TREE EVIDENCE WAS FOUND. THEREFORE, THE WEST 1/4 CORNER OF SECTION 36 WAS SET AT MIDPOINT BETWEEN THE NORTHWEST AND SOUTHWEST SECTION CORNERS. THE CORNER SET IN THIS SURVEY WAS MONUMENTED WITH AN IRON PIPE AND BRASS CAP, AS NOTED. THE CORNER WAS MARKED WITH PROPER MARKING PER "1973 U.S.B.L.M. MANUAL OF INSTRUCTION", AND ALSO MARKED "PLS 2163". THE TRUE PROPERTY LINE WAS MARKED BY BLAZING TREES (BLAZES PAINTED RED) ON EITHER SIDE OF THE TRUE LINE. BEARING TREES ESTABLISHED IN THIS SURVEY WERE BASED ON MAGNETIC 20° DECLINATION WITH DISTANCES TO A "W" SPIKE IN THE LOWER BLAZE.

SCALE 1" = 400'

BASIS OF BEARING = SOLAR OBSERVATION

#### LEGEND

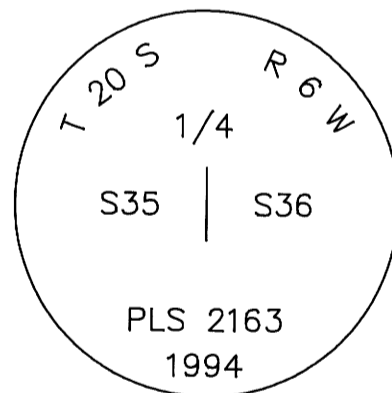
- ⊙ - CORNERS FOUND (AS NOTED)
- - CORNER SET ( 3/4" X 36" IRON PIPE )
- - PROPERTY LINE
- [ ] - RECORD DATA - 1872 GLO

### SECTION CORNER 25, 26, 35, 36

FOUND: 3/4" IRON PIPE WITH DOUGLAS COUNTY BRASS CAP DATED 1961  
 18" FIR SNAG, S 38 E, 14.0 FT. - VISIBLE SCRIBING  
 RECORD: S 40 E, 20 LKS. - 1872 OBT  
 RECORD: S 40 E, 12.7 FT. TO "W" NAIL - 1957 WEYERHAEUSER  
 37" FIR STUMP, N 34 E, 35.9 FT.  
 RECORD: N 29 E, 34.3 FT. TO "W" NAIL - 1957 WEYERHAEUSER  
 18" FIR, S 78 W, 28.3 FT.  
 RECORD: S 78 W, 28.0 FT. TO "W" NAIL - 1957 WEYERHAEUSER  
 RECORD: S 79 W, 28.3 FT. - 1961 DOUGLAS CO.  
 29" FIR, N 41 W, 29.0 FT. - CLOSED FACE  
 RECORD: N 49 W, 28.9 FT. TO "W" NAIL - 1957 WEYERHAEUSER  
 RECORD: N 48 W, 29.6 FT. - 1961 DOUGLAS CO.  
 27" FIR, S 21 E, 54.1 FT. - CLOSED FACE  
 RECORD: S 21 E, 54.0 FT. - 1961 DOUGLAS CO.

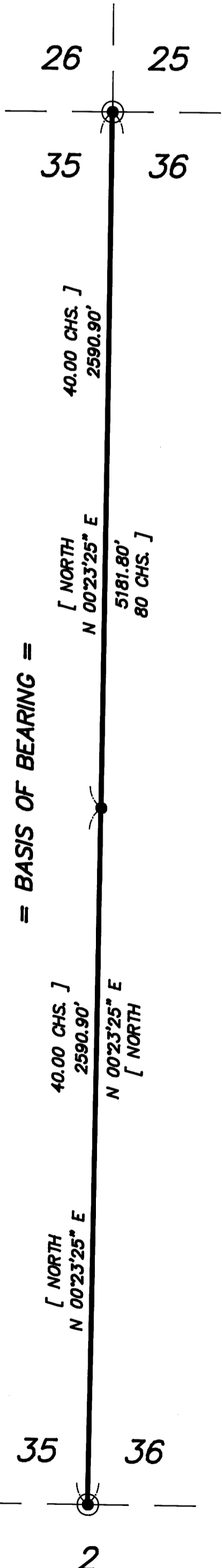
### 1/4 CORNER 35, 36

FOUND: 3/4" IRON PIPE, S 10-1/4 W, 3.4 FT. - UNKNOWN  
 6" FIR, N 2 W, 5.3 FT. TO PIPE - 1978 DRAIN DISTRICT BLM  
 14" FIR BLOW DOWN, S 31 E, 19.5 FT. TO PIPE - 1978 DRAIN DISTRICT BLM  
 SET: 2-1/2" BRASS CAP ON 3/4" X 36" IRON PIPE AS SHOWN  
 11" FIR, N 45-1/2 E, 27.6 FT. - SCRIBED "1/4 S36 BT"  
 10" FIR, S 61 E, 35.7 FT. - SCRIBED "1/4 S36 BT"  
 11" FIR, S 33 W, 28.6 FT. - SCRIBED "1/4 S35 BT"  
 12" FIR, N 45 W, 24.0 FT. - SCRIBED "1/4 S35 BT"  
 6" FENCE POST 1' NORTH



### SECTION CORNER 2, 35, 36

FOUND: 2-1/2" U.S.B.L.M. BRASS CAP DATED 1984  
 36" FIR, S 46-1/2 E, 25.0 FT. - VISIBLE SCRIBING  
 RECORD: S 45 E, 38 LKS. - 1872 GLO  
 32" FIR, N 72-1/4 W, 21.0 FT. - CLOSED FACE  
 RECORD: UNKNOWN  
 18" FIR, N 68-1/2 W, 12.0 FT. - CLOSED FACE  
 RECORD: N 68-1/2 W, 12.0 FT. - 1958 DOUGLAS COUNTY  
 19" FIR, N 52 E, 48.4 FT. - CLOSED FACE  
 RECORD: N 51 E, 75 LKS. - 1962 BLM  
 20" FIR, N 53-1/2 E, 45.0 FT. - CLOSED FACE  
 RECORD: N 54 E, 45.5 FT. - 1958 DOUGLAS COUNTY  
 26" FIR STUMP, N 61-1/2 E, 17.4 FT.  
 RECORD: N 62 E, 26 LKS. - 1984 BLM  
 RECORD: N 65-3/4 E, 25 LKS. - 1962 BLM  
 RECORD: N 17-1/2 E, 25 LKS. - 1872 GLO



REGISTERED PROFESSIONAL LAND SURVEYOR

David Wellman

OREGON JULY, 1988  
DAVID H. WELLMAN  
2163

EXPIRES 12/31/94

SURVEY IN  
W 1/2 SECTION 36, T20S, R6W, W.M.  
DOUGLAS COUNTY, OREGON

CLIENT: WEYERHAEUSER COMPANY

DRAWN BY: DHW

DATE: 7/29/94

FILE: 200636

BAKER AND ASSOCIATES, SURVEYORS  
1385 OAK STREET - SUITE 3  
EUGENE, OREGON (503) 343-7243