

SURVEY FOR HARBOR BAPTIST CHURCH

LOCATED IN THE NW1/4 OF SECTION 7 OF T22S, R12W, W.M. WINCHESTER BAY, OREGON

FILED

Date: 5/31/94 By: JP
This survey consists of:
Map: M120-2
Narrative: _____
Corner Rpt: _____

JP DOUGLAS COUNTY SURVEYOR *JP*



SCALE 1" = 100'

DATE: APRIL, 1994

NARRATIVE

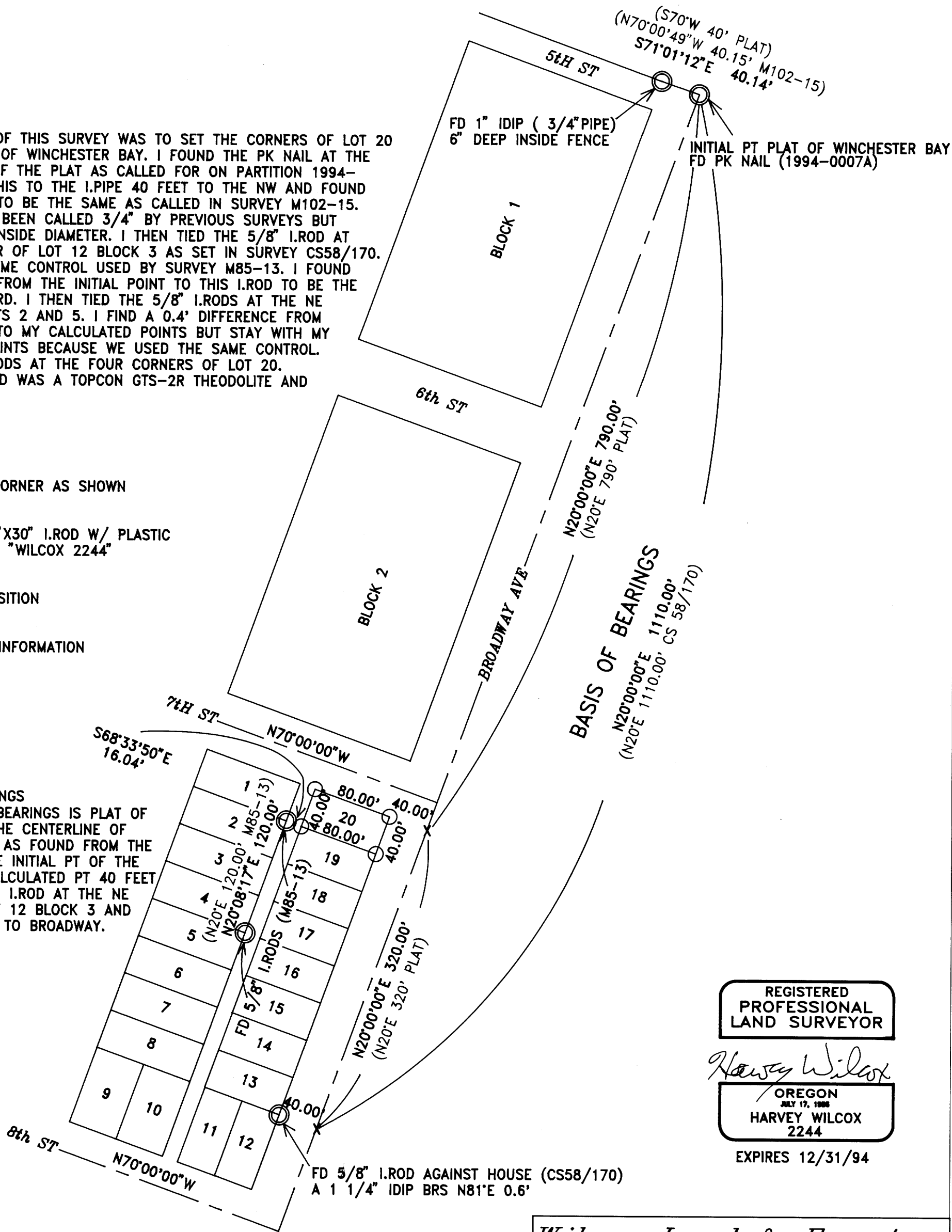
THE PURPOSE OF THIS SURVEY WAS TO SET THE CORNERS OF LOT 20 BLOCK 3 PLAT OF WINCHESTER BAY. I FOUND THE PK NAIL AT THE INITIAL POINT OF THE PLAT AS CALLED FOR ON PARTITION 1994-0007. I TIED THIS TO THE 1" PIPE 40 FEET TO THE NW AND FOUND THE DISTANCE TO BE THE SAME AS CALLED IN SURVEY M102-15. THIS PIPE HAS BEEN CALLED 3/4" BY PREVIOUS SURVEYS BUT MEASURES 1" INSIDE DIAMETER. I THEN TIED THE 5/8" I. ROD AT THE NE CORNER OF LOT 12 BLOCK 3 AS SET IN SURVEY CS58/170. THIS IS THE SAME CONTROL USED BY SURVEY M85-13. I FOUND THE DISTANCE FROM THE INITIAL POINT TO THIS I. ROD TO BE THE SAME AS RECORD. I THEN TIED THE 5/8" I. RODS AT THE NE CORNER OF LOTS 2 AND 5. I FIND A 0.4' DIFFERENCE FROM THESE POINTS TO MY CALCULATED POINTS BUT STAY WITH MY CALCULATED POINTS BECAUSE WE USED THE SAME CONTROL. I SET 5/8" I. RODS AT THE FOUR CORNERS OF LOT 20. EQUIPMENT USED WAS A TOPCON GTS-2R THEODOLITE AND EDM.

LEGEND

- ⊙ FOUND CORNER AS SHOWN
- SET 5/8" X 30" I. ROD W/ PLASTIC CAP MKD "WILCOX 2244"
- X CALC POSITION
- () RECORD INFORMATION

BASIS OF BEARINGS

THE BASIS OF BEARINGS IS PLAT OF N20°E ALONG THE CENTERLINE OF BROADWAY AVE AS FOUND FROM THE PK NAIL AT THE INITIAL PT OF THE PLAT AND A CALCULATED PT 40 FEET FROM THE 5/8" I. ROD AT THE NE CORNER OF LOT 12 BLOCK 3 AND PERPENDICULAR TO BROADWAY.



REGISTERED PROFESSIONAL LAND SURVEYOR

Harvey Wilcox

OREGON
JULY 17, 1988
HARVEY WILCOX
2244

EXPIRES 12/31/94

Wilcox Land & Forestry Services

3190 N. Lake RD
Lakeside, Oregon 97449 Phone (503) 759-4467