

SURVEY FOR:  
 IP TIMBERLANDS OPERATING CO., LTD.  
 711 PORT DOCK ROAD  
 REEDSPORT, OR. 97467

DAVID E. CRAVEN  
 7890 NORTH FORK SMITH RIVER ROAD  
 REEDSPORT, OR. 97467

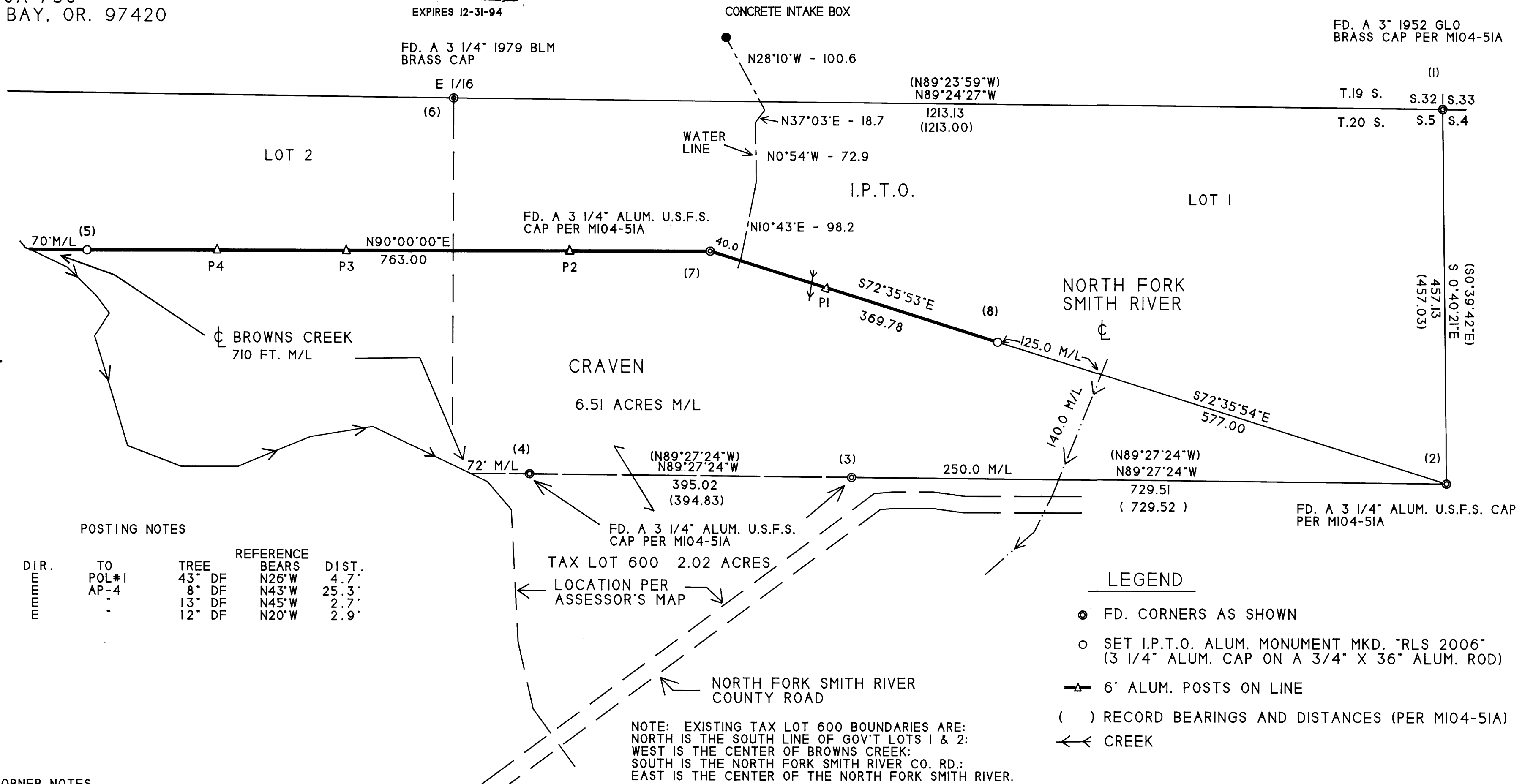
SURVEY BY:  
 CLYDE F. MULKINS  
 TIMBER CRUISING & ENGINEERING  
 P.O. BOX 750  
 COOS BAY, OR. 97420

BOUNDARY LINE ADJUSTMENT SURVEY LOCATED IN  
 PTN. OF LOTS 1 AND 2. SEC. 5. T.20 S.. R.10 W.. W.M..  
 DOUGLAS CO., OR.

FILED  
 Date: 6/8/94 By: BC  
 This survey consists of:  
 Map: M120-13  
 Narrative:  
 Corner Rpt.:

DOUGLAS COUNTY  
 SURVEYOR

Keith L. Cubic 6/8/94  
 DOUGLAS COUNTY PLANNING DIRECTOR



SCALE 1" = 100'  
 MAY 30, 1994

POSTING NOTES

POST	DIST.	DIR.	TO	TREE	REFERENCE	DIST.
1	215	E	POL#1	43" DF	N26°W	4.7'
2	174	E	AP-4	8" DF	N43°W	25.3'
3	448	E	-	13" DF	N45°W	2.7'
4	605	E	-	12" DF	N20°W	2.9'

CORNER NOTES

\*1: FD. A 1952 GLO 3" BRASS CAP AT THE CORNER OF SECTIONS 4 AND 5 T.20 S., R.10 W., AND SECTIONS 32 AND 33 T.19 S., R.10 W., FROM WHICH: FD. A 31" ALDER STUMP 6' HIGH WITH A HEALED FACE BEARS N12°W, 8.6 FT.; FD. A 30" DF STUMP WITH A PARTIAL FACE BEARS N40°E, 34.9 FT.; FD. A 33" DF STUMP 5' HIGH WITH A HEALED FACE BEARS S20°E, 66.2 FT.; FD. A 22" DF STUMP WITH AN OLD DECAYED FACE BEARS S87°W, 10.7 FT. (15 LKS.); FD. A 6" DF STUMP WITH PARTIAL SCRIBES BEARS N24°W (N30°W), 36.2 FT. THE CORNER FALLS 50 FEET EAST OF A GRAVELED ROAD.

\*2: FD. A 3 1/4" U.S.F.S. ALUM. CAP AT THE SOUTHEAST CORNER OF LOT 1. FROM WHICH: FD. AN 18" DF STUMP WITH A HEALED FACE BEARS S63 3/4°E, 9.1 FT.; FD. AN UPROOTED 13" DF STUMP WITH A HEALED FACE BEARS N3°W, 19.2 FT.; FD. A 28" DF STUMP 4' HIGH WITH A HEALED FACE BEARS N63°E, 3.4 FT.; A 3 1/4" U.S.F.S. ALUM. CAP BEARS S0°32'W, 41.4 FT.; A 3/4" IRON PIPE 4' OUT OF GROUND BEARS N28°E, 1.0 FT.

\*3: FD. A 3 1/4" U.S.F.S. ALUM. CAP MARKED AP-1 LOT 1 FROM WHICH: FD. AN 11" ALDER WITH VISIBLE BARK SCRIBES BEARS N60°E, 54.2 FT.; FD. A 6" ALDER WITH VISIBLE BARK SCRIBES BEARS N25 1/2°W, 53.6 FT.

\*4: FD. A 3 1/4" U.S.F.S. ALUM. CAP MARKED AP-2 FROM WHICH: FD. AN 8" ALDER WITH VISIBLE BARK SCRIBES BEARS N49°W, 29.9 FT.; FD. A 16" ALDER WITH VISIBLE BARK SCRIBES BEARS S38°W, 36.9 FT. THE MONUMENT FALLS ON THE EAST BANK OF BROWNS CREEK.

\*5: SET AN I.P.T.O. ALUM. MONUMENT 763.0 FT. WEST OF CORNER #7 FROM WHICH: 1 SCRIBE " POL#2 BT " ON AN 18" DF BEARS N26°W, 32.4 FT. CORNER FALLS ON THE EAST BANK OF BROWNS CREEK.

\*6: FD. A 3 1/4" 1979 BLM BRASS CAP AT THE E 1/16 BETWEEN SECTIONS 32 AND 5. FROM WHICH: FD. AN 11" DF WITH A HEALED FACE BEARS N41°W, 18.8 FT.; FD. A 25" DF WITH A HEALED FACE BEARS S12°E, 9.0 FT.

\*7: FD. A 3 1/4" U.S.F.S. ALUM. CAP MARKED AP-4 FROM WHICH: FD. A 10" ALDER WITH VISIBLE BARK SCRIBES BEARS N24 1/2°W, 12.7 FT.; FD. A 28" DF WITH A HEALED FACE BEARS N30°E, 49.4 FT.

\*8: SET AN I.P.T.O. ALUM. MONUMENT ON LINE BETWEEN CORNERS 7 AND 2 FROM WHICH: 1 SCRIBE " POL #1 BT " ON A 49" DF BEARS N38°E, 21.7 FT. THE MONUMENT FALLS ON THE WEST BANK ON THE NORTH FORK SMITH RIVER.

LEGEND

- FD. CORNERS AS SHOWN
- SET I.P.T.O. ALUM. MONUMENT MKD. "RLS 2006" (3 1/4" ALUM. CAP ON A 3/4" X 36" ALUM. ROD)
- ▲ 6" ALUM. POSTS ON LINE
- ( ) RECORD BEARINGS AND DISTANCES (PER M104-51A)
- ← CREEK

NARRATIVE

THE PURPOSE OF THIS SURVEY WAS TO ESTABLISH CORNERS FOR A BOUNDARY LINE ADJUSTMENT BETWEEN PROPERTY OWNED BY I.P.T.O. AND MR. AND MRS. DAVID E. CRAVEN. BASIS OF BEARING FOR THIS SURVEY WERE AP-2 (CORNER #25 M104-15A.B) AND THE SE CORNER GOV'T LOT 1 (CORNER #9 M104-15A.B).

ASSISTING ME WITH THIS SURVEY WERE TROY RAMBO, MATT MARTIN, AND FLOYD VANDERVELDEN, LS 1047. THE SURVEY WAS PERFORMED BETWEEN MARCH 21 AND MARCH 23, 1994. A TOPCON GTS-301 WAS USED FOR TRAVERSING. THIS WAS A CLOSED LOOP TRAVERSE 2900 FEET LONG WITH A LINEAR ERROR OF 0.08 FEET.

I.P.T.O. BOUNDARIES HAVE BEEN MARKED WITH 6" ALUMINUM POSTS WITH STICKERS AND RED RIBBONS. THE POSTS ARE REFERENCED TO A NEARBY TREE AS NOTED IN THE LINE POSTING NOTES. BEARINGS ARE MAGNETIC WITH DECL. 20°E. DISTANCES ARE TO THE TAGS. ALL NEW BEARING TREES ARE PAINTED RED. DISTANCES ARE MEASURED TO A 6" STEEL SPIKE AT SIDE CENTER BASE OF TREES. BEARINGS ARE MAGNETIC WITH DECL. 20°E.

MAP FILE M120-13

MAP FILE M120-13