

FILED

Date: 6/7/94 By: BC  
This survey consists of:  
Map: M 120-12  
Narrative:  
Corner Ept.

DOUGLAS COUNTY SURVEYOR



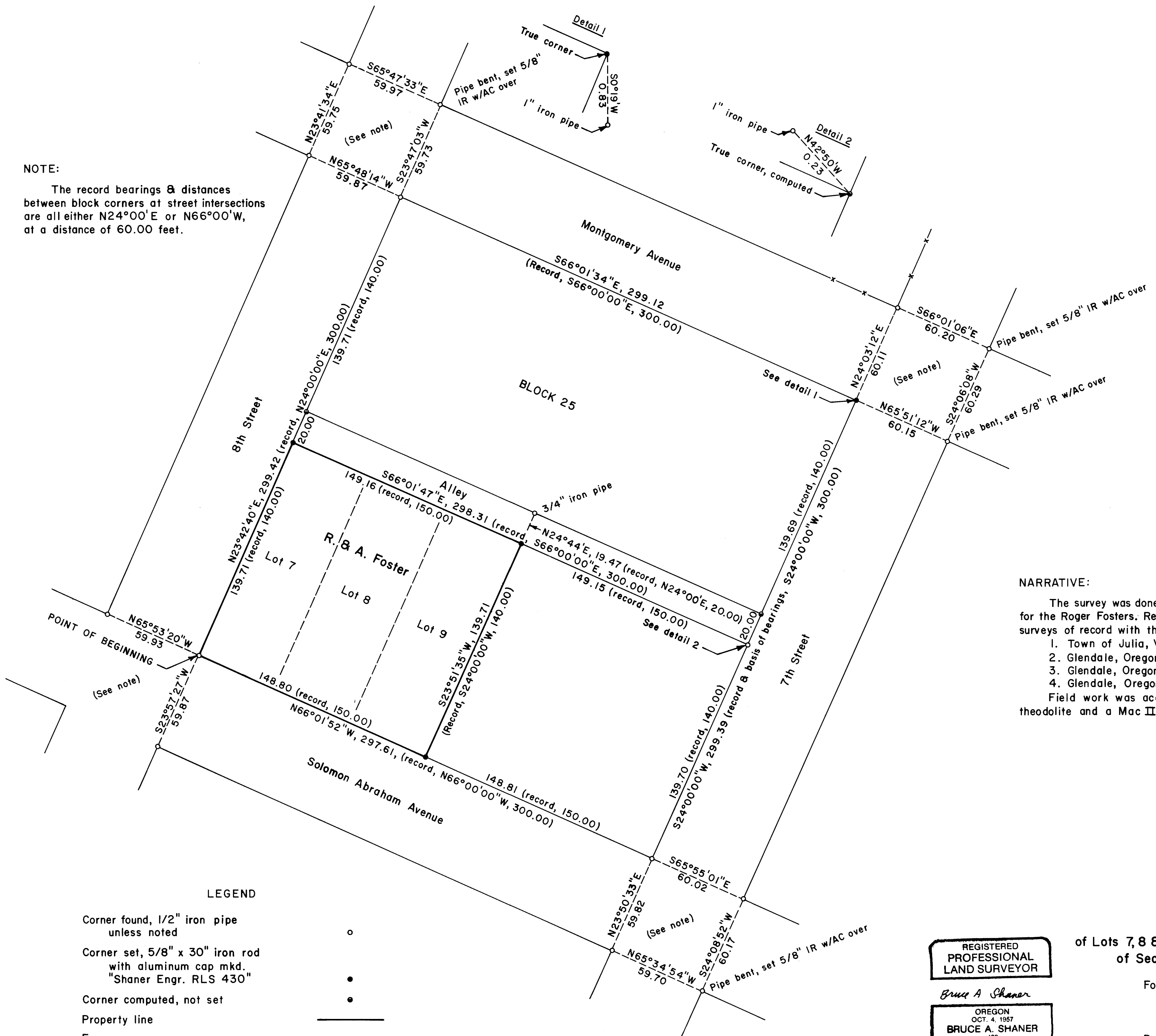
Basis of bearings is easterly line of Block 25



Scale: 1" = 40 ft.

NOTE:

The record bearings & distances between block corners at street intersections are all either N24°00'E or N66°00'W, at a distance of 60.00 feet.



NARRATIVE:

The survey was done to locate the lot and property lines for the Roger Fosters. Reference was made to the following surveys of record with the Douglas County Surveyor's Office:  
1. Town of Julia, Vol. I, Page 9.  
2. Glendale, Oregon, map by George Wenderoth, M22-50.  
3. Glendale, Oregon, map by George Wenderoth, RM3-17.  
4. Glendale, Oregon, Block 25, George Wenderoth, CS46/173.  
Field work was accomplished with a Jena 0°00'01" theodolite and a Mac II electronic distance meter, in May, 1994.

LEGEND

- Corner found, 1/2" iron pipe unless noted ○
- Corner set, 5/8" x 30" iron rod with aluminum cap mkd. "Shaner Engr. RLS 430" ●
- Corner computed, not set ●
- Property line ———
- Fence — x —

REGISTERED PROFESSIONAL LAND SURVEYOR

Bruce A. Shaner  
OREGON OCT. 4, 1957  
BRUCE A. SHANER  
430

Expires Dec. 31, 1994

PROPERTY LINE SURVEY of Lots 7, 8 & 9 in Block 25, City of Glendale in the NW 1/4 NE 1/4 of Section 5, T33S, R6W, W.M., Douglas County, Oregon

For: Roger & Annamarie Foster  
c/o Coast to Coast Store  
Glendale, Oregon 97442

By: Shaner Engineering, Inc.  
P. O. Box 1430  
Roseburg, Oregon 97470

May 31, 1994

COUNTY SURVEYORS FILE DATA  
DO NOT REMOVE FROM OFFICE

MAP FILE M 120-12

MAP FILE M 120-12