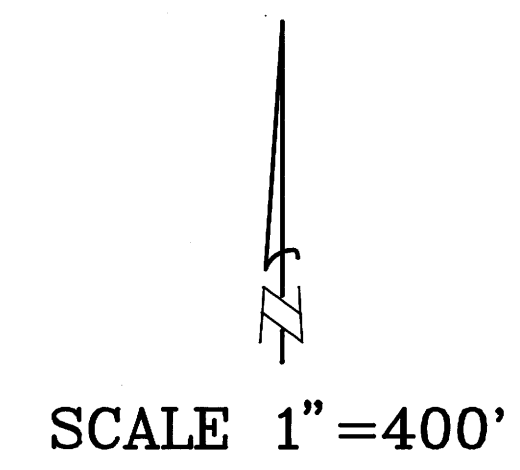


COUNTY SURVEYORS FILE DATA  
DO NOT REMOVE FROM OFFICE

FILED  
Date: 11-22-95 by: MP  
This survey consists of:  
Map: M119-76  
Narrative:  
Corner Rpt:  
DOUGLAS COUNTY  
SURVEYOR CB

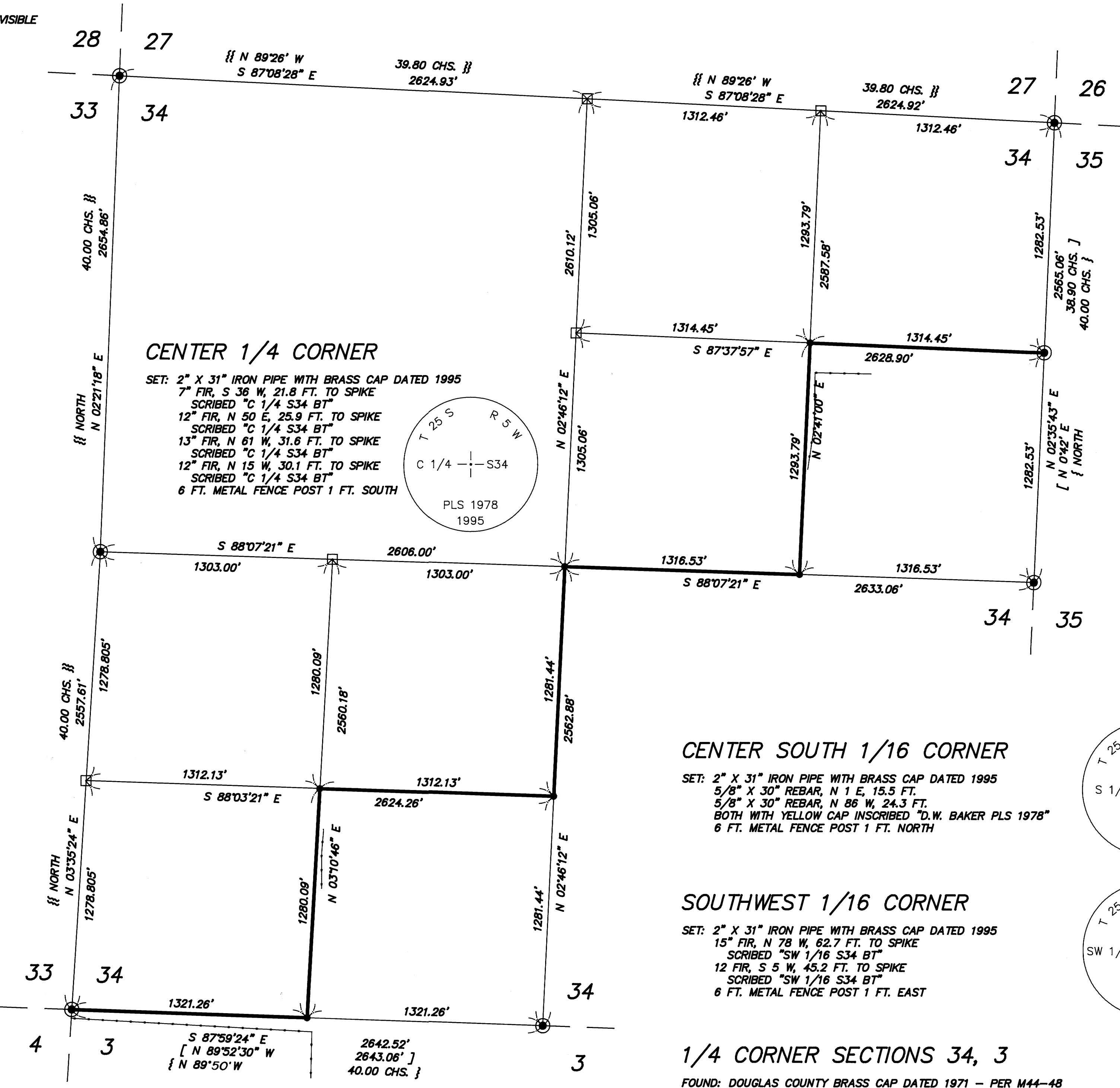
SECTION CORNER 27, 28, 33, 34

FOUND: 2-1/2" BRASS CAP DATED 1995 PER M119-74  
16" FIR, N 83 E, 136.8 FT. TO SPIKE - SCRIBE VISIBLE  
RECORD: N 83 E, 136.8 FT. TO SPIKE  
14" FIR, S 11 E, 86.9 FT. TO SPIKE - SCRIBE VISIBLE  
RECORD: S 11 E, 86.9 FT. TO SPIKE  
14" FIR STUMP, S 54 W, 23.4 FT. TO SPIKE  
RECORD: S 54 W, 23.4 FT. TO SPIKE  
19" FIR STUMP, N 81 W, 32.3 FT. TO SPIKE  
RECORD: N 81 W, 32.3 FT. TO SPIKE  
6 FT. METAL FENCE POST 1 FT. NORTH



1/4 CORNER 33, 34

FOUND: DOUGLAS CO. BRASS CAP DATED 1959  
8" FIR SNAG, N 86-1/2 E, 26.3 FT. - CLOSED FACE  
RECORD: N 85 E, 26.7 FT. - 1959 DOUGLAS CO.  
48" ROTTEN FIR STUMP, S 9 W, 26.3 FT.  
RECORD: UNKNOWN  
22" FIR STUMP, N 81 W, 30.3 FT. - CUT BELOW SCRIBE  
RECORD: N 83 W, 30.4 FT. - 1959 DOUGLAS CO.



SECTION CORNER 26, 27, 34, 35

FOUND: DOUGLAS COUNTY BRASS CAP DATED 1960  
24" FIR STUMP, S 45 E, 13.2 FT. - ROTTEN AND BURNED REMAINS  
RECORD: S 46-1/2 E, 13.0 FT. - 1923 M6-21  
24" FIR, S 68 W, 73.1 FT. - CLOSED FACE  
RECORD: S 66 W, 73.5 FT. - 1960 DOUGLAS CO.  
20" FIR, N 21 W, 75.6 FT. - CLOSED FACE  
RECORD: N 17 W, 74.4 FT. - 1960 DOUGLAS CO.

NORTH 1/16 CORNER 34, 35

FOUND: 2-1/2" BRASS CAP DATED 1995 PER M119-75  
5" ASH, S 81 W, 7.8 FT. TO SPIKE - SCRIBE VISIBLE  
RECORD: S 81 W, 7.8 FT. TO SPIKE  
BOULDER BEARING OBJECT; 4.0' X 2.6' X 3.6'  
N 81 E, 32.5 FT. TO PK NAIL - MARKS VISIBLE  
RECORD: N 81 E, 32.5 FT. TO PK NAIL IN CONCRETE  
6 FT. METAL FENCE POST 1 FT. WEST

NORTHEAST 1/16 CORNER

SET: 2" X 31" IRON PIPE WITH BRASS CAP DATED 1995  
5" MADRONE, N 72 E, 38.2 FT. TO SPIKE  
SCRIBED "NE 1/16 S34 BT"  
14" MADRONE, S 2 E, 62.3 FT. TO SPIKE  
SCRIBED "NE 1/16 S34 BT"  
6 FT. METAL FENCE POST 1 FT. SOUTH

CENTER EAST 1/16 CORNER

SET: 2" X 31" IRON PIPE WITH BRASS CAP DATED 1995  
6" FIR, S 22 E, 13.8 FT. TO SPIKE  
SCRIBED "CE 1/16 S34 BT"  
9" FIR, N 82 E, 23.8 FT. TO SPIKE  
SCRIBED "CE 1/16 S34 BT"  
6 FT. METAL FENCE POST 1 FT. WEST

1/4 CORNER 34, 35

FOUND: U.S.B.L.M. BRASS CAP DATED 1963  
22" FIR, N 76-1/2 E, 27.9 FT. - CLOSED FACE  
RECORD: N 74-1/2 E, 42 LKS. - 1963 BLM

CENTER SOUTH 1/16 CORNER

SET: 2" X 31" IRON PIPE WITH BRASS CAP DATED 1995  
5/8" X 30" REBAR, N 1 E, 15.5 FT.  
5/8" X 30" REBAR, N 86 W, 24.3 FT.  
BOTH WITH YELLOW CAP INSCRIBED "D.W. BAKER PLS 1978"  
6 FT. METAL FENCE POST 1 FT. NORTH

SOUTHWEST 1/16 CORNER

SET: 2" X 31" IRON PIPE WITH BRASS CAP DATED 1995  
15" FIR, N 78 W, 62.7 FT. TO SPIKE  
SCRIBED "SW 1/16 S34 BT"  
12" FIR, S 5 W, 45.2 FT. TO SPIKE  
SCRIBED "SW 1/16 S34 BT"  
6 FT. METAL FENCE POST 1 FT. EAST

1/4 CORNER SECTIONS 34, 3

FOUND: DOUGLAS COUNTY BRASS CAP DATED 1971 - PER M44-48  
1" T" IRON, N 39 E, 19.9 FT.  
RECORD: N 39 E, 20.0 FT. - 1971 M44-48  
1" T" IRON, SOUTH, 20.0 FT.  
RECORD: SOUTH, 20.0 FT. - 1971 M44-48  
SET: 6 FT. METAL FENCE POST 1 FT. WEST

SECTION CORNER 33, 34, 3, 4

FOUND: DOUGLAS CO. BRASS CAP DATED 1972  
14" FIR, N 67 E, 60.3 FT. TO 1.5 FT. HIGH STUB - CLOSED FACE  
RECORD: N 67 E, 60.5 FT. - 1972 DOUGLAS CO.  
15" W. OAK, S 82 E, 49.0 FT. TO SET SPIKE - CLOSED FACE  
RECORD: S 82 E, 49.5 FT. - 1972 DOUGLAS CO.  
15" ASH, S 8 W, 46.1 FT. TO SET SPIKE - SCRIBE VISIBLE  
RECORD: 15" MAPLE, S 8 W, 46.0 FT. - 1972 DOUGLAS CO.  
16" B. OAK, N 56 W, 42.3 FT. TO SET SPIKE - CLOSED FACE  
RECORD: N 56 W, 42.2 FT. - 1972 DOUGLAS CO.

WEST 1/16 SECTIONS 34, 3

SET: 2" X 31" IRON PIPE WITH BRASS CAP DATED 1995  
18" FIR, N 40 E, 58.9 FT. TO SPIKE  
SCRIBED "W 1/16 S34 BT"  
15" FIR, S 78 W, 56.9 FT. TO SPIKE  
SCRIBED "W 1/16 S3 BT"  
6 FT. METAL FENCE POST 1 FT. WEST

NARRATIVE

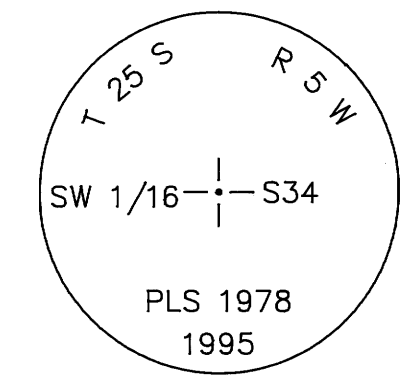
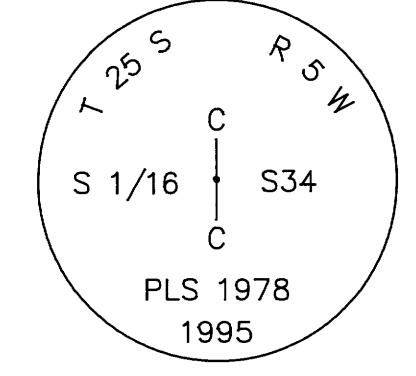
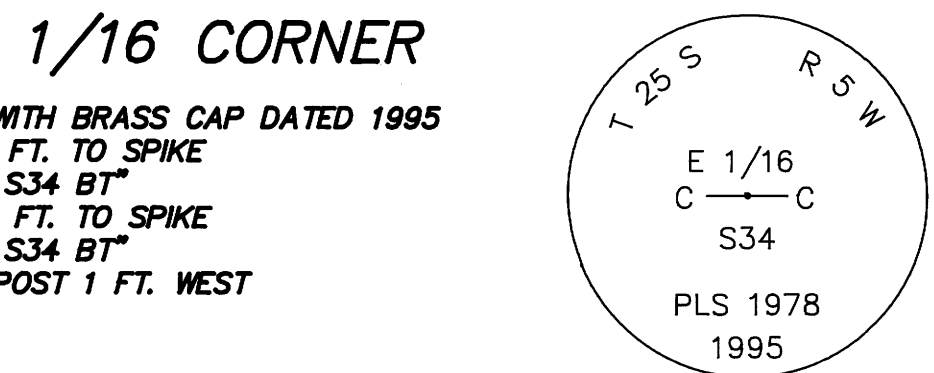
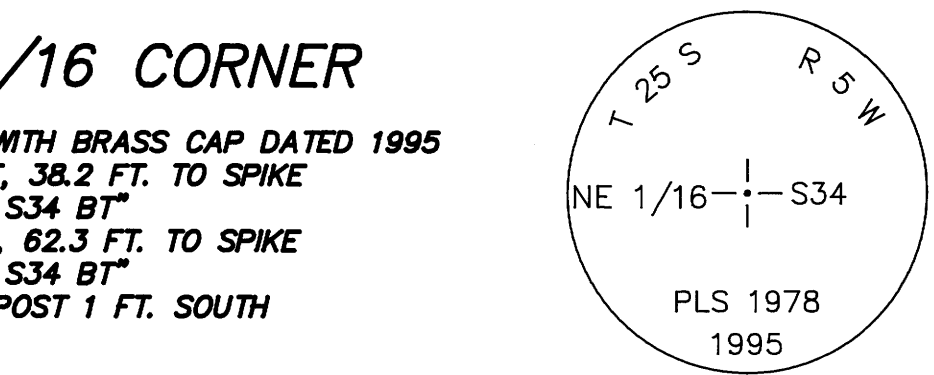
THIS SURVEY WAS MADE IN OCTOBER 1995 BY DANIEL W. BAKER, OF BAKER AND ASSOCIATES, SURVEYORS, 1385 OAK STREET, SUITE 3, EUGENE, OREGON. THE PURPOSE OF THIS SURVEY WAS TO LOCATE AND MARK, IN THE FIELD, THE PROPERTY LINES OF GARY WAGGONER OWNERSHIP IN SECTION 34, T25S, R5W, W.M. THIS SURVEY IS COORDINATED WITH A PREVIOUS SURVEY PERFORMED BY THIS COMPANY IN SECTION 33 AND FILED AS M119-74 AND SECTION 35 AND FILED AS M119-75. DUE TO THE SIZE OF THE SURVEYS, A GPS STATIC CONTROL NETWORK WAS ESTABLISHED WITH TRIMBLE 4000SSE RECEIVERS TO THE EXISTING CORNERS AND ADDITIONAL CONTROL POINTS TO BE USED DURING THE CONVENTIONAL PORTION OF THE SURVEY. BASELINE VECTORS HELD ON A LOCAL COORDINATE SYSTEM WERE ADJUSTED BY TRIMBLE GPSURV WAVE AND LEAST SQUARES ADJUSTMENT PROGRAMS. WGS84 COORDINATES AND THE 1993 GEOIDAL MODEL WERE USED TO PRODUCE 3D NETWORK COORDINATES. A CONVENTIONAL NETWORK WAS RUN BETWEEN CONTROL POINTS USING A WILD T1000 WITH DISS EDM AND TOPCON GST 301. THE ENTIRE NETWORK WAS LEAST SQUARES ADJUSTED USING STAR\*NET SOFTWARE WHILE HOLDING THE GPS CONTROL NETWORK POINTS AS FIXED. THE BASIS OF BEARING FOR THIS SURVEY IS BY GEODETIC REFERENCE AS GENERATED BY THE GPS AND TRANSFORMED TO NAD 83 STATE PLANE OREGON SOUTH ZONE GRID BEARINGS.

THE FOLLOWING CORNERS WERE USED FOR CONTROL AS FOUND, AND ACCEPTED AS BEING IN CORRECT POSITIONS; THE NORTHEAST, NORTHWEST, AND SOUTHWEST SECTION CORNERS, SOUTH 1/4, EAST 1/4, AND WEST 1/4 CORNERS, AND NORTH 1/16 CORNER ON THE EAST LINE, ALL IN SECTION 34.

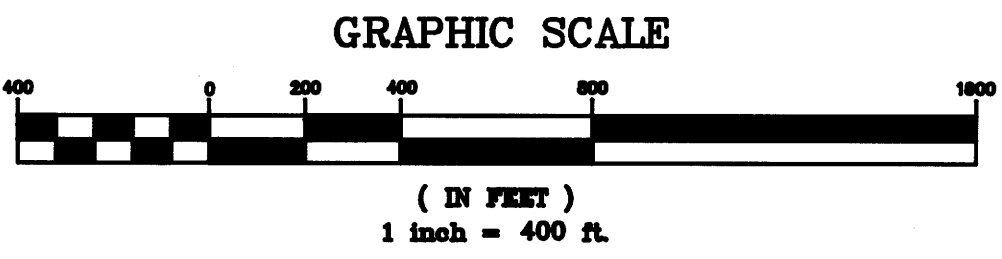
THE NORTH 1/4 CORNER WAS CALCULATED ONLY, AT MIDPOINT AND ON LINE BETWEEN THE NORTHEAST AND NORTHWEST SECTION CORNERS. THE CENTER 1/4 CORNER WAS SET AT THE INTERSECTION OF THE NORTH/SOUTH AND EAST/WEST CENTERLINES OF SECTION 34. THE CENTER NORTH 1/16 CORNER WAS CALCULATED AT MIDPOINT AND ON LINE BETWEEN THE CENTER 1/4 AND NORTH 1/4 CORNER POSITION. THE EAST 1/16 CORNER WAS CALCULATED AT MIDPOINT AND ON LINE BETWEEN THE NORTH 1/4 CORNER POSITION AND NORTHEAST SECTION CORNER. THE CENTER EAST 1/16 WAS SET AT MIDPOINT AND ON LINE BETWEEN THE CENTER 1/4 AND EAST 1/4 CORNERS. THE NORTHEAST 1/16 CORNER WAS SET AT THE INTERSECTION OF THE NORTH/SOUTH AND EAST/WEST CENTERLINES OF THE NORTHEAST 1/4 OF SECTION 34.

THE CENTER WEST 1/16 CORNER WAS CALCULATED AT MIDPOINT AND ON LINE BETWEEN THE CENTER 1/4 AND WEST 1/4 CORNERS. THE SOUTH 1/16 CORNER WAS CALCULATED AT MIDPOINT AND ON LINE BETWEEN THE WEST 1/4 AND SOUTHWEST SECTION CORNERS. THE CENTER SOUTH 1/16 CORNER WAS SET AT MIDPOINT AND ON LINE BETWEEN THE CENTER 1/4 AND SOUTH 1/4 CORNERS. THE WEST 1/16 CORNER WAS SET AT MIDPOINT AND ON LINE BETWEEN THE SOUTH 1/4 AND SOUTHWEST SECTION CORNERS. THE SOUTHWEST 1/16 CORNER WAS SET AT THE INTERSECTION OF THE NORTH/SOUTH AND EAST/WEST CENTERLINES OF THE SOUTHWEST 1/4 OF SECTION 34.

THE CORNERS SET IN THIS SURVEY WERE MONUMENTED AS NOTED WITH 2-1/2" BRASS CAPS. THE CORNER WAS MARKED WITH PROPER MARKING PER "1973 BLM MANUAL OF INSTRUCTION". THE TRUE PROPERTY LINE WAS MARKED BY BLAZING TREES (BLAZES PAINTED RED) ON EITHER SIDE OF THE TRUE LINE, OR BY PLACING 6 FOOT METAL FENCE POSTS ON LINE AS APPROPRIATE. BEARING TREES ESTABLISHED OR TIED IN THIS SURVEY WERE BASED ON MAGNETIC 20' DECLINATION, WITH DISTANCES TO A TO AN 8" SPIKE AT SIDE CENTER WHERE NOTED.



- LEGEND
- CORNERS FOUND (AS NOTED)
- CORNERS SET (AS NOTED)
- CALCULATED POINT (NOT SET)
- PROPERTY LINE
- RECORD DATA - 1853 GLO
- RECORD DATA - 1871 GLO
- RECORD DATA - 1972 DOUGLAS CO. M44-48
- EXISTING FENCE



BASIS OF BEARING: NAD 83 OREGON STATE PLANE SOUTH ZONE  
AVERAGE PROJECT CONVERGENCE ANGLE: -1'53"58"  
DISTANCES STATED ARE GRID DISTANCE (1 METER = 3.28084 FT.)  
COMBINED GRID FACTOR: GRID = GROUND X 0.99985

REGISTERED PROFESSIONAL LAND SURVEYOR  
DANIEL W. BAKER  
1978  
EXPIRES 12/31/95

SURVEY IN  
NE 1/4, NW 1/4, SW 1/4 SEC. 34, T25S, R5W, W.M.  
DOUGLAS COUNTY, OREGON  
CLIENT: GARY WAGGONER  
DRAWN BY: DHW  
DATE: 10/31/95  
FILE: BA\GARY\_S34  
BAKER AND ASSOCIATES, SURVEYORS  
1385 OAK STREET - SUITE 3  
EUGENE, OREGON (503) 343-7243