

FILED
Date: 11-16-95 By: JC
This survey consists of:
Map: M.119-75
Narrative:
Corner Rpt:
DOUGLAS COUNTY
SURVEYOR CB

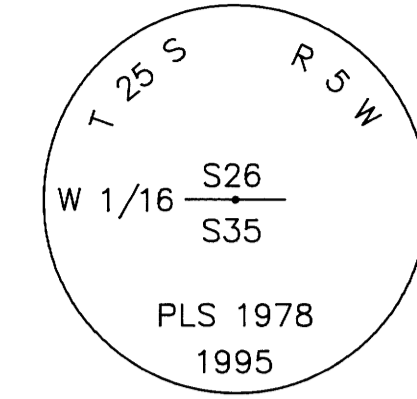
COUNTY SURVEYORS FILE DATA
DO NOT REMOVE FROM OFFICE

SECTION CORNER 26, 27, 34, 35

FOUND: DOUGLAS COUNTY BRASS CAP DATED 1960
24" FIR STUMP, S 45 E, 13.2 FT. - ROTTEN AND BURNED REMAINS
RECORD: S 46-1/2 E, 13.0 FT. - 1923 M6-21
24" FIR, S 68 W, 73.1 FT. - CLOSED FACE
RECORD: S 66 W, 73.5 FT. - 1960 DOUGLAS CO.
20" FIR, N 21 W, 75.6 FT. - CLOSED FACE
RECORD: N 17 W, 74.4 FT. - 1960 DOUGLAS CO.

WEST 1/16 CORNER 26, 35

SET: 1-3/4" X 31" GALVANIZED PIPE WITH BRASS CAP DATED 1995
6" FIR, N 23 E, 13.7 FT. TO SPIKE
SCRIBED "W 1/16 S26 BT"
7" FIR, S 61 E, 9.0 FT. TO SPIKE
SCRIBED "W 1/16 S35 BT"
6 FT. METAL FENCE POST 1 FT. SOUTH



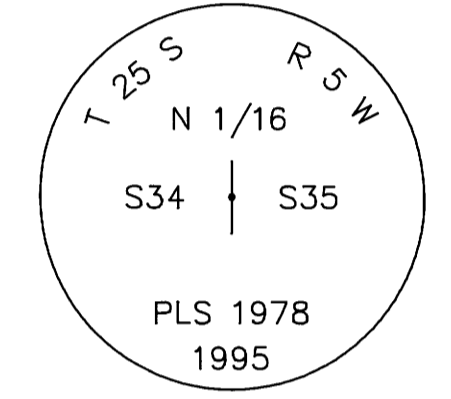
1/4 CORNER 26, 35

FOUND: DOUGLAS COUNTY BRASS CAP DATED 1962
24" FIR STUMP, N 64-3/4 E, 57.5 FT. - SCRIBE VISIBLE
RECORD: N 63-3/4 E, 86 LKS. - 1963 BLM

SCALE 1" = 200'

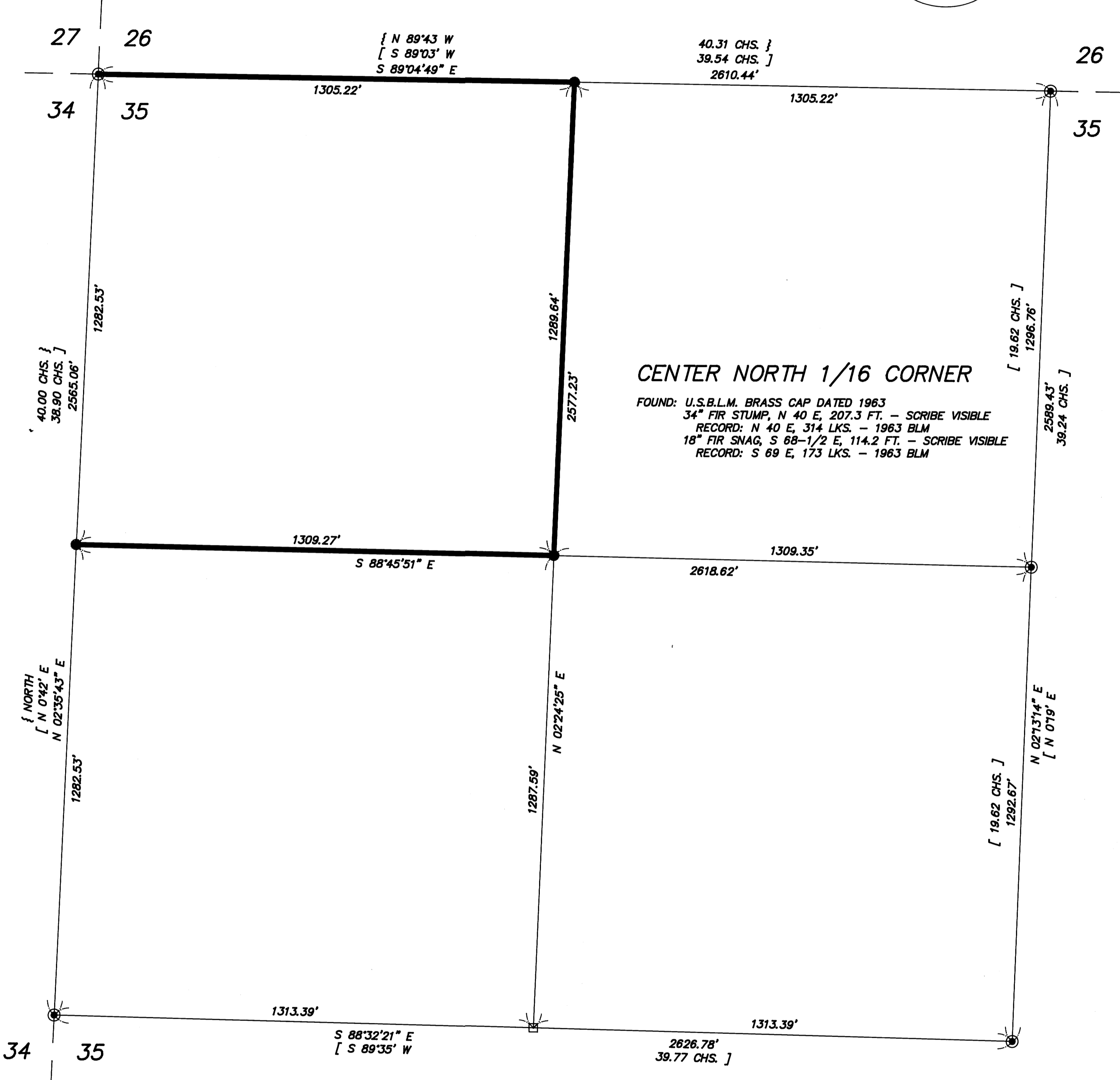
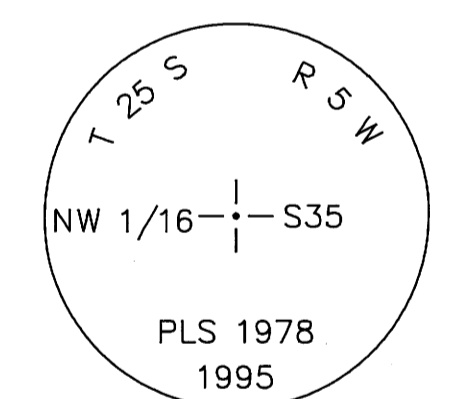
NORTH 1/16 CORNER 34, 35

SET: 1-3/4" X 31" GALVANIZED PIPE WITH BRASS CAP DATED 1995
5" ASH, S 81 W, 7.8 FT. TO SPIKE
SCRIBED "N 1/16 S34 BT"
BOULDER BEARING OBJECT; 4.0' X 2.6' X 3.6'
N 61 E, 32.5 FT. TO PK NAIL IN CONCRETE
MARKED "N 1/16 S35 B0"
6 FT. METAL FENCE POST 1 FT. WEST



NORTHWEST 1/16 CORNER

SET: 1-3/4" X 31" GALVANIZED PIPE WITH BRASS CAP DATED 1995
29" CEDAR, N 6 W, 31.4 FT. TO SPIKE
SCRIBED "NW 1/16 S35 BT"
10" FIR, N 70 E, 18.9 FT. TO SPIKE
SCRIBED "NW 1/16 S35 BT"
6 FT. METAL FENCE POST 1 FT. NORTH



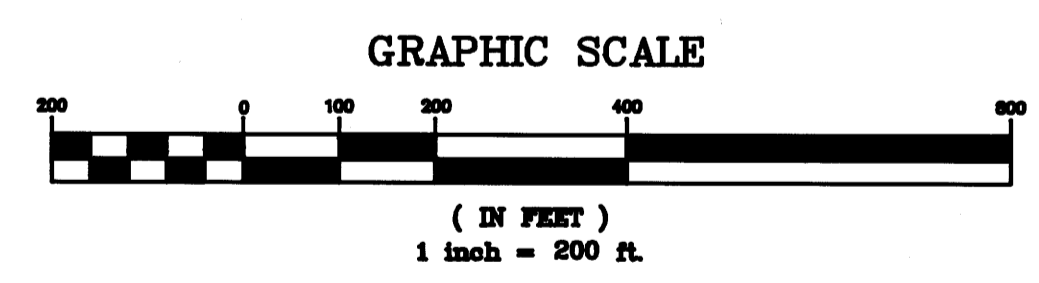
NARRATIVE

THIS SURVEY WAS MADE FROM SEPTEMBER 1995 TO OCTOBER 1995 BY DANIEL W. BAKER, OF BAKER AND ASSOCIATES, SURVEYORS, 1385 OAK STREET, SUITE 3, EUGENE, OREGON. THE PURPOSE OF THIS SURVEY WAS TO LOCATE AND MARK, IN THE FIELD, THE PROPERTY LINES OF GARY WAGGONER OWNERSHIP IN SECTION 35, T25S, R5W, W.M. THIS SURVEY IS COORDINATED WITH A PREVIOUS SURVEY PERFORMED BY THIS COMPANY IN SECTION 33 AND FILED AS M.119-71. DUE TO THE SIZE OF THE SURVEYS, A GPS STATIC CONTROL NETWORK WAS ESTABLISHED WITH TRIMBLE 4000SSE RECEIVERS TO TIE EXISTING CORNERS AND ADDITIONAL CONTROL POINTS TO BE USED DURING THE CONVENTIONAL PORTION OF THE SURVEY. BASELINE VECTORS HELD ON A LOCAL COORDINATE SYSTEM WERE ADJUSTED BY TRIMBLE GPSURVEY WAVE AND LEAST SQUARES ADJUSTMENT PROGRAMS. WGS84 COORDINATES AND THE 1993 GEOIDAL MODEL WERE USED TO PRODUCE 3D NETWORK COORDINATES. A CONVENTIONAL NETWORK WAS RUN BETWEEN CONTROL POINTS USING A TOPCON GST 301. THE ENTIRE NETWORK WAS LEAST SQUARES ADJUSTED USING STARNET SOFTWARE WHILE HOLDING THE GPS CONTROL NETWORK POINTS AS FIXED. THE BASIS OF BEARING FOR THIS SURVEY IS BY GEODETIC REFERENCE AS GENERATED BY THE GPS AND TRANSFORMED TO NAD 83 STATE PLANE OREGON SOUTH ZONE GRID BEARINGS.

THE FOLLOWING CORNERS WERE USED FOR CONTROL AS FOUND, AND ACCEPTED AS BEING IN CORRECT POSITIONS; THE NORTH 1/4, WEST 1/4, CENTER 1/4, NORTHWEST CORNER, AND CENTER NORTH 1/16 CORNERS ALL IN SECTION 35.

THE WEST 1/16 CORNER BETWEEN SECTION 35 AND 26 WAS SET AT MIDPOINT AND ON LINE BETWEEN THE FOUND NORTH 1/4 AND NORTHWEST SECTION CORNERS OF SECTION 35. THE NORTH 1/16 CORNER BETWEEN SECTIONS 34 AND 35 WAS SET AT MIDPOINT AND ON LINE BETWEEN THE NORTHWEST SECTION CORNER AND WEST 1/4 CORNER OF SECTION 35. THE CENTER WEST 1/16 CORNER WAS CALCULATED AS BEING AT MIDPOINT BETWEEN THE CENTER 1/4 AND WEST 1/4 CORNERS. THE NORTHWEST 1/16 CORNER WAS SET AT THE INTERSECTION OF THE NORTH/SOUTH AND EAST/WEST CENTERLINES OF THE NORTHWEST 1/4 OF THE SECTION.

THE CORNERS SET IN THIS SURVEY WERE MONUMENTED AS NOTED WITH 2-1/2" BRASS CAPS. THE CORNER WAS MARKED WITH PROPER MARKING PER "1973 BLM MANUAL OF INSTRUCTION". THE TRUE PROPERTY LINE WAS MARKED BY BLAZING TREES (BLAZES PAINTED RED) ON EITHER SIDE OF THE TRUE LINE, OR BY PLACING 6 FOOT METAL FENCE POSTS ON LINE AS APPROPRIATE. BEARING TREES ESTABLISHED OR TIED IN THIS SURVEY WERE BASED ON MAGNETIC 20' DECLINATION, WITH DISTANCES TO AN 8" SPIKE AT SIDE CENTER WHERE NOTED.



BASIS OF BEARING: NAD 83 OREGON STATE PLANE SOUTH ZONE
AVERAGE PROJECT CONVERGENCE ANGLE: -1'53'24"
DISTANCES STATED ARE GRID FEET DISTANCE (1 METER = 3.28084 FT.)
COMBINED GRID FACTOR: GRID = GROUND X 0.9999

LEGEND

- - CORNERS FOUND (AS NOTED)
- - CORNERS SET (AS NOTED)
- - CALCULATED POINT (NOT SET)
- - PROPERTY LINE
- { } - RECORD DATA - 1871 GLO
- [] - RECORD DATA - 1963 BLM

1/4 CORNER 34, 35

FOUND: U.S.B.L.M. BRASS CAP DATED 1963
22" FIR, N 76-1/2 E, 27.9 FT. - CLOSED FACE
RECORD: N 74-1/2 E, 42 LKS. - 1963 BLM

CENTER 1/4 CORNER

FOUND: U.S.B.L.M. BRASS CAP DATED 1963
16" FIR, S 69-1/2 E, 64.5 FT. - CLOSED FACE
RECORD: S 71 E, 98 LKS. - 1963 BLM
19" FIR STUB, N 73-1/2 W, 27.5 FT. - SCRIBE VISIBLE
RECORD: N 74 W, 41 LKS. - 1963 BLM

REGISTERED PROFESSIONAL LAND SURVEYOR
DANIEL W. BAKER
1978
EXPIRES 12/31/95

MAP: 25-5-35 TAX LOT: 300
SURVEY IN
NW 1/4 SECTION 35, T25S, R5W, W.M.
DOUGLAS CO.
CLIENT: GARY WAGGONER
DRAWN BY: DHW BAKER AND ASSOCIATES, SURVEYORS
DATE: 10/20/95 1385 OAK STREET - SUITE 3
FILE: BA\GARY_S35 EUGENE, OREGON (503) 343-7243