

99-611 W 3714 JYM

LONE ROCK TIMBER CO.

PO BOX 1127 ROSEBURG, OREGON 97470 DRAIN SURVEY
SW1/4 SECTION 17, TOWNSHIP 22 SOUTH, RANGE 05 WEST, W. DOUGLAS COUNTY, OREGON
SCALE 1" = 100' DATE: JUNE 1995

COUNTY SURVEYORS FILE DATA
DO NOT REMOVE FROM OFFICE

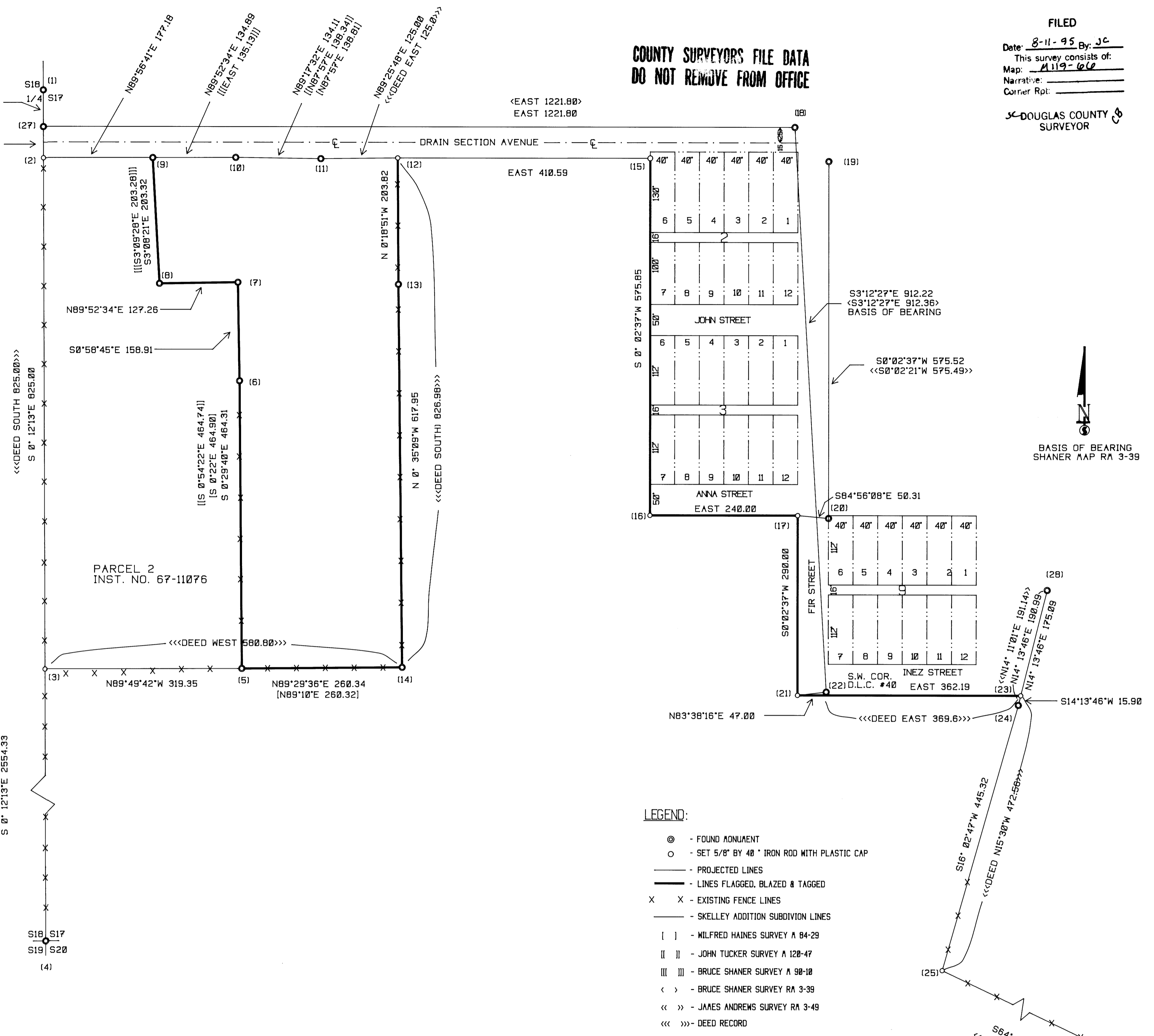
FILED
Date: 8-11-95 By: JC
This survey consists of:
Map: A119-66
Narrative:
Corner Rpt:
DOUGLAS COUNTY SURVEYOR

CORNER INFORMATION

- THE FOLLOWING IS A RECORD OF ALL CORNERS FOUND OR SET DURING THE COURSE OF THIS SURVEY.
- WEST 1/4 CORNER SECTION 17
FOUND: 5/8" IRON ROD BADLY BENT, AND UNDERGROUND.
-- SHANER CORNER FROM MAP A90-10 BEARS S0°17'W, 60.1 FEET (RECORD SOUTH 60' FEET)
-- HAINES CORNER FROM RENEWAL OF 1/4 CORNER CS 55/216 BEARS S2°30'30"E, 72.15 FEET (RECORD S2°E, 72.00 FEET)
CORNER LIES IN MILL YARD SOUTH OF CHIP CONVEYOR.
 - PROPERTY CORNER
SET 5/8" X 40" IRON ROD WITH PLASTIC CAP MARKED LONE ROCK TIMBER PLS 2291.
-- TELEPHONE POLE #13 BEARS N72°W, 13.7 FEET, WE TAG
CORNER LIES ON SOUTH RIGHT OF WAY OF DRAIN SECTION ROAD, WE SET A METAL FENCE POST APPROXIMATELY 1' FEET NORTH.
 - PROPERTY CORNER
SET 5/8" X 40" IRON ROD WITH PLASTIC CAP MARKED LONE ROCK TIMBER COMPANY PLS 2291.
-- 13" DOUGLAS FIR BEARS S77°W, 37.9 FEET, WE SCRIBE "B.T." AND TAG
CORNER LIES 0.5 FEET WEST OF FENCE LINE AND S12°E, 4.1 FROM FENCE CORNER. WE SET A METAL FENCE POST APPROXIMATELY NORTH 1' FEET.
 - SOUTHWEST SECTION CORNER SECTION 17
FOUND DOUGLAS COUNTY BRASS CAP IN GOOD CONDITION.
-- 18" DOUBLE TRUNKED DOUGLAS FIR BEARS S81°W, 71.7 FEET (RECORD S79°W, 71.7 FEET)
-- 12" WHITE OAK BEARS S7°34'W, 235.2 FEET (RECORD S6 1/4°W, 235.3 FEET)
CORNER LIES 4.5 FEET WEST OF NORTH-SOUTH FENCE LINE, REPROD EAST OF FENCE AND PASTURE WEST OF FENCE.
 - PROPERTY CORNER
FOUND 5/8" IRON ROD AS SET IN HAINES MAP A84-29.
CORNER LIES AT FENCE CORNER WITH FENCES RUNNING EAST, WEST AND NORTH FROM CORNER.
 - PROPERTY CORNER
FOUND 5/8" IRON ROD AS SET IN HAINES MAP A84-29.
CORNER LIES IN NORTH-SOUTH RUNNING FENCE LINE.
 - PROPERTY CORNER
FOUND 5/8" IRON ROD WITH PLASTIC CAP TUCKER PLS 2633 AS PER MAP A120-47.
CORNER LIES ON WEST EDGE OF GRAVEL DRIVEWAY AT SHARP CURVE.
 - PROPERTY CORNER
FOUND: 1" ALUMINUM CAP AS SET IN SHANER MAP A90-10
-- 12" OAK BEARS S15°E, 12.3 FEET. WE SCRIBE B.T. AND TAG TREE
 - PROPERTY CORNER
FOUND: 1" ALUMINUM CAP AS SET IN SHANER MAP A90-10.
CORNER LIES ON TOP OF CUT BANK ON SOUTH SIDE OF DRAIN SECTION ROAD.
 - PROPERTY CORNER
FOUND: 5/8" IRON ROD AS SET IN HAINES MAP A84-29.
CORNER LIES SOUTH OF DRAIN SECTION ROAD AND IN GRAVEL DRIVEWAY.
 - PROPERTY CORNER
FOUND: 5/8" IRON ROD AS SET IN HAINES MAP A84-29.
CORNER LIES SOUTH OF DRAIN SECTION ROAD IN FENCE LINE WEST OF DRIVEWAY.
 - PROPERTY CORNER
SET 5/8" X 40" IRON ROD WITH PLASTIC CAP MARKED LONE ROCK TIMBER PLS 2291 8.0 FEET ABOVE GROUND.
-- TELEPHONE POLE BEARS N67°E, 9.5 FEET, WE TAG
CORNER LIES 8.0 FEET SOUTH OF CUT BANK FOR DRAIN SECTION ROAD. WE SET A METAL FENCE POST APPROXIMATELY 1.0 FEET SOUTH.
 - PROPERTY CORNER
FOUND: 5/8" IRON ROD WITH PLASTIC CAP MARKED TUCKER PLS 2633.
CORNER LIES 2.0 FEET EAST OF FENCE LINE THAT RUNS NORTH-SOUTH.
 - PROPERTY CORNER
FOUND: 5/8" IRON ROD AS SET IN HAINES MAP A84-29.
-- 5/8" IRON ROD WITH PLASTIC CAP MARKED TUCKER PLS 2633 AS PER TUCKER MAP 120-47 BEARS S85°10'W, 4.55 FEET
CORNER LIES AT FENCE CORNER WITH FENCES RUNNING NORTH AND WEST FROM CORNER.
 - PROPERTY CORNER
SET 5/8" X 40" IRON ROD WITH PLASTIC CAP MARKED LONE ROCK TIMBER PLS 2291 0.3 FEET ABOVE GROUND.
-- TELEPHONE POLE #67 BEARS S87°W, 3.0 FEET, WE TAG
CORNER LIES ON VERY EDGE OF CUT BANK ON SOUTH SIDE OF DRAIN SECTION ROAD. WE SET A METAL FENCE POST APPROXIMATELY SOUTH 1.0 FEET.
 - PROPERTY CORNER
SET 5/8" X 40" IRON ROD WITH PLASTIC CAP MARKED LONE ROCK TIMBER PLS 2291, 0.7 FEET ABOVE GROUND.
-- 7" DOUGLAS FIR BEARS S35°W, 11.4 FEET, WE SCRIBE "B.T." AND TAG
CORNER LIES APPROXIMATELY 80.0 FEET SOUTH OF ROCK ROAD AND ON EAST EDGE OF POWER LINE RIGHT OF WAY. WE SET A METAL FENCE POST APPROXIMATELY 1.0 FEET SOUTH.
 - PROPERTY CORNER
SET 5/8" X 40" IRON ROD WITH PLASTIC CAP MARKED LONE ROCK TIMBER PLS 2291.
CORNER LIES IN HEAVY BLACKBERRY BRUSH APPROXIMATELY 40.0 FEET NORTH OF ROCK ROAD AND IS APPROXIMATELY 30.0 FEET WEST OF FENCE CORNER.
 - PROPERTY CORNER
FOUND: 1" ALUMINUM CAP AS SET IN SHANER MAP RA 3-39 1.5 FEET ABOVE GROUND.
CORNER LIES ON NORTH RIGHT OF WAY OF DRAIN SECTION ROAD AND WEST RIGHT OF WAY OF FIR STREET.
 - PROPERTY CORNER
FOUND: 5/8" IRON ROD AS SET IN ANDREWS MAP RA 3-49.
CORNER LIES ON SOUTH RIGHT OF WAY OF DRAIN SECTION ROAD AND THE EAST RIGHT OF WAY OF FIR STREET.
 - PROPERTY CORNER
FOUND: 5/8" IRON ROD AS SET IN ANDREWS MAP RA 3-49.
CORNER LIES 25.0 FEET EAST OF FENCE CORNER IN A FENCE LINE.
 - PROPERTY CORNER
SET 5/8" IRON ROD WITH PLASTIC CAP MARKED LONE ROCK TIMBER PLS 2291 0.5 FEET ABOVE GROUND.
-- 8" DOUGLAS FIR BEARS S71°E, 12.5 FEET, WE BLAZE "B.T." AND TAG
CORNER LIES IN 6" TO 8" MACHINE PLANTED REPROD. WE PUT A METAL FENCE POST APPROXIMATELY 1.0 FEET NORTH.
 - SOUTHWEST CORNER D.L.C. NO. 40 W.N. GOODSELL
FOUND: 5/8" IRON ROD BADLY TWISTED, WE SET A NEW 5/8" IRON ROD AT BASE OF EXISTING ROD WITH 1 1/2" ALUMINUM CAP MARKED LONE ROCK TIMBER COMPANY 7225 RSW S17° D.L.C. 40 1995 PLS 2291.
-- 8" DOUGLAS FIR BEARS N57°E, 10.8 FEET, WE SCRIBE "B.T." AND TAG
-- 9" DOUGLAS FIR BEARS S1°E, 11.1 FEET, WE SCRIBE "B.T." AND TAG
CORNER LIES IN MACHINE PLANTED REPROD. WE PUT A METAL FENCE POST APPROXIMATELY 1.0 FEET SOUTH.
 - PROPERTY CORNER
SET 5/8" X 40" IRON ROD WITH PLASTIC CAP MARKED LONE ROCK TIMBER PLS 2291 0.5 FEET ABOVE GROUND.
-- 4" MAPLE BEARS S69°W, 28.7 FEET, WE SCRIBE "B.T." AND TAG
CORNER LIES 11.5 FEET WEST OF FENCE LINE THAT RUNS UP THE WEST EDGE OF ROCK DRIVEWAY. WE PUT A METAL FENCE POST APPROXIMATELY 1.0 FEET NORTH.
 - PROPERTY CORNER
FOUND: 5/8" IRON ROD WITH METAL FENCE POST ALONGSIDE AS PER ANDREWS MAP RA 3-49.
-- 5/8" IRON ROD WITH PLASTIC CAP AT GROUND LEVEL FROM RA 3-49 BEARS N51°44'49"E, 82.16 FEET.
-- 5/8" IRON ROD WITH PLASTIC CAP AT GROUND LEVEL FROM RA 3-49 BEARS N86°03'14"E, 127.26 FEET
CORNER LIES S14 1/4°W, 15.9 FEET FROM PROPERTY CORNER (23).
 - PROPERTY CORNER
SET 5/8" X 40" IRON ROD WITH PLASTIC CAP MARKED LONE ROCK TIMBER PLS 2291 ON WEST EDGE OF FENCE CORNER POST.
-- 54" COTTONWOOD TREE BEARS S53°40'W, 157.43 FEET (DEED CALLS 20" BALA S53°30'W, 155.6 FEET) NO VISIBLE MARKS
CORNER LIES AT FENCE CORNER.
 - PROPERTY CORNER
FOUND 5/8" IRON ROD WITH PLASTIC CAP AS PER LONE ROCK TIMBER LAND PARTITION MAP 1993 - 0049.
 - PROPERTY CORNER
FOUND: 5/8" IRON ROD WITH 1" ALUMINUM CAP AT GROUND LEVEL AS SET IN SHANER MAP A90-10.
 - PROPERTY CORNER
FOUND: 5/8" IRON ROD WITH PLASTIC CAP AT GROUND LEVEL AS SET IN ANDREWS MAP RA3-49.

NARRATIVE

THIS SURVEY WAS CONDUCTED TO ESTABLISH PROPERTY CORNERS AND PROPERTY LINES FOR TIMBER CUTTING, LAND CLEARING AND TREE PLANTING PURPOSES. WE INITIATED THIS SURVEY AT THE W1/4 OF SECTION 17, AN IRON ROD (1) RENEWED FROM ORIGINAL EVIDENCE, TRAVERSING IN A RANDOM MANNER NEAR PROPERTY LINES ON SEVERAL CLOSED LOOP TRAVERSES TO ALL CORNERS SHOWN HEREON. WE SET IRON RODS (2) AND (3) AS PER RECORD DEED DISTANCE FROM W1/4 CORNER ON THE SECTION LINE AS SHOWN. WE SET IRON ROD (12) AT RECORD DEED DISTANCE, ON THE SOUTH R/W OF DRAIN SECTION AVENUE. FROM HAINES IRON ROD (11) SET FOR THE NW CORNER OF THIS PROPERTY. WE SET IRON ROD (15) AT RECORD DISTANCE AND BEARING OF BLOCK 2 SKELLEY ADDITION, USING SHANER'S IRON ROD (16) CORNER SET AT THE NE CORNER OF THE INTERSECTION OF FIR STREET AND DRAIN SECTION AVENUE AS CONTROL. WE SET IRON RODS (16), (17) AND (21) USING ANDREWS IRON RODS (19) AND (20) FOR CONTROL FOR THE EAST BOUNDARY OF FIR STREET. WE THEN SET IRON ROD (23) AT INTERSECTION OF ANDREWS AGREEMENT LINE IRON RODS (24) AND (28), WITH RECORD BEARING OF THE SOUTH BOUNDARY LINE OF INEZ STREET. LASTLY WE SET IRON ROD (25) AT THE FENCE CORNER AS SHOWN WHICH ALSO CLOSELY CORRESPONDS TO THE BEARING TREE CALL IN THE DEED. WE THEN MARKED THE TRUE PROPERTY LINES AS SHOWN. THIS SURVEY WAS DONE WITH A LIETZ SET 2 TOTAL STATION WITH GARY ANGIOLET, JERRY RAGON, AND IGNACIO ROMAN ASSISTING ME.



- LEGEND:
- ⊙ - FOUND MONUMENT
 - - SET 5/8" BY 40" IRON ROD WITH PLASTIC CAP
 - - PROJECTED LINES
 - - LINES FLAGGED, BLAZED & TAGGED
 - X - EXISTING FENCE LINES
 - - SKELLEY ADDITION SUBDIVISION LINES
 - [] - MILFRED HAINES SURVEY A 84-29
 - [] - JOHN TUCKER SURVEY A 128-47
 - [] - BRUCE SHANER SURVEY A 98-10
 - < > - BRUCE SHANER SURVEY RA 3-39
 - << >> - JAMES ANDREWS SURVEY RA 3-49
 - <<< >>> - DEED RECORD
- DEED RECORDS USED THIS SURVEY
- 89-18044 BOOK 1082 PAGE 17 THRU 24
 - 83-13894 BOOK 862 PAGES 987
 - 86-15257 BOOK 965 PAGE 314
 - 94-17429 BOOK 1318 PAGE 990 AND 993
 - 93-24108 BOOK 1268 PAGES 19 THRU 21
- VOL. 278 PAGE 12
INST. NO. 67-11076

REGISTERED
PROFESSIONAL
LAND SURVEYOR
Ken W. Hoffine
OREGON
JULY 18, 1989
KEN W. HOFFINE
298
EXPIRES 6-30-97