

LONE ROCK TIMBER CO.

PO BOX 1127 ROSEBURG OREGON 97470 DATE: APRIL 1995
SECTION 28, TOWNSHIP 30 SOUTH, RANGE 09 WEST, W.M. DOUGLAS COUNTY, OREGON
LONE ROCK TIMBER TRACT: IP 30-09-28 SCALE 1" = 500'

FILED
Date: 5-22-95 By: JH
This survey consists of:
Maps: M 119-59
Narrative:
Corner: Rpt
DOUGLAS COUNTY SURVEYOR

REGISTERED PROFESSIONAL LAND SURVEYOR

Kim W. Hoffine

OREGON JULY 16, 1987 KEN W. HOFFINE 2291

EXPIRES 6-30-95



NARRATIVE

THIS SURVEY WAS CONDUCTED TO ESTABLISH PROPERTY CORNERS AND PROPERTY LINES FOR TIMBER CUTTING PURPOSES. WE INITIATED THIS SURVEY AT THE EAST 1/4 CORNER OF SECTION 28, AN ORIGINAL CORNER TREE MISTAKENLY USED AS A BEARING TREE BY COUNTY SURVEYORS IN CS FILE NO. 53/53. WE SET A P.K. NAIL IN THE CHOPPED OUT BLAZE AT RECORD DISTANCE AND BEARING FROM FOUND ORIGINAL BEARING TREES AS SHOWN HEREON. WE THEN BEGAN A RANDOM CLOSED TRAVERSE AROUND THE ENTIRE SECTION TYING INTO THE SESC, S1/4, SWSC, W1/4, NWSC AND THE NESC ALL CORNERS RENEWED FROM ORIGINAL EVIDENCE. WE ALSO FOUND ORIGINAL BEARING TREES AND REFERENCED THEM AS SHOWN HEREON. WE CALCULATED AND SET THE N1/4 OF SECTION 28 BY PROPORTION AND THEN RAN A RANDOM TRAVERSE FROM THE E1/4 WESTERLY TO THE C1/4 WHICH WE SET AND THEN NORTHERLY BACK TO THE N1/4. WE BLAZED, PAINTED, TAGGED AND FLAGGED ALL PROPERTY LINES AS SHOWN HEREON. THIS SURVEY WAS DONE WITH A LIETZ SET2 TOTAL STATION WITH GARY ANGIOLET, JERRY RAGON, PAT KELLY AND INGACIO ROMAN ASSISTING ME.

CORNER INFORMATION

THE FOLLOWING IS A RECORD OF ALL CORNERS FOUND OR SET DURING THE COURSE OF THIS SURVEY.

1) EAST 1/4 CORNER SECTION 28
FOUND ORIGINAL CORNER TREE AS PER GLO NOTES CORNER IS NOW A 40" SNAG WITH CHOPPED OUT FACE. WE PLACE P.K. NAIL IN FACE OF TREE.
-- 20" DOUGLAS FIR SNAG BEARS S1 1/2"W, 77.9 FEET (RECORD S6"W, 77.9 FEET)
-- 36" DOUGLAS FIR BEARS S5 1/2"E, 15.8 FEET (RECORD S54"E, 15.8 FEET)
-- IRON PIPE BEARS N6 1/4"W, 14.8 FEET FROM CORNER
CORNER LIES ON SOUTHEAST SLOPE.

2) SOUTHEAST SECTION CORNER SECTION 28
FOUND COUNTY BRASS CAP 12 FEET ABOVE GROUND IN GOOD CONDITION.
-- 56" DOUGLAS FIR BEARS N76 1/2"E, 18.6 FEET (RECORD N74 1/2"E, 18.6 FEET) WELL HEALED FACE AND TAG
-- 23" RED CEDAR BEARS S5 3/4"E, 26.4 FEET (RECORD S8"E, 26.05 FEET) WELL HEALED FACE AND TAG
-- 25" RED CEDAR BEARS N79"W, 18.0 FEET (RECORD N79"W, 17.8 FEET)
-- 38" RED CEDAR BEARS S87"W, 37.3 FEET (RECORD S55 1/2"W, 37.95 FEET) WELL HEALED FACE AND TAG
CORNER LIES ON SOUTH BANK OF A SHALLOW DRAW THAT RUNS N44"E.

3) SOUTH 1/4 CORNER SECTION 28
FOUND COUNTY BRASS CAP 0.5 FEET ABOVE GROUND IN GOOD CONDITION.
-- 56" DOUGLAS FIR 20 FOOT TALL SNAG BEARS N29"E, 26.8 FEET (RECORD N28 1/2"E, 27.1 FEET) CHOPPED OUT FACE AND TAG
-- 30" DOUGLAS FIR 10 FOOT TALL SNAG BEARS S12"W, 39.9 FEET (RECORD S12"W, 39.4 FEET) SCRIBING VISIBLE AND TAG
-- 10" DOUGLAS FIR BEARS S25"W, 41.9 FEET, WE SCRIBE 1/4 S33 B.T. AND TAG TREE
-- 10" HEMLOCK BEARS N60 1/2"W, 20.41 FEET, WE SCRIBE 1/4 S28 B.T. AND TAG TREE
CORNER LIES ON EAST SIDE OF A VERY SHALLOW DRAW AND 22 FEET NORTH OF CENTERLINE OF GRAVEL ROAD 30-9-28.

4) SOUTHWEST CORNER SECTION 28
FOUND COUNTY BRASS CAP 10 FEET ABOVE GROUND IN GOOD CONDITION.
-- 27" DOUGLAS FIR BEARS S89 1/4"E, 5.75 FEET (RECORD S87"E, 6.2 FEET) CHOPPED OUT FACE AND TAG
-- 25" DOUGLAS FIR BEARS S19 1/2"W, 23.5 FEET (RECORD S20 3/4"W, 24.1 FEET) WELL HEALED FACE AND TAG
-- 29" DOUGLAS FIR BEARS N48 1/4"W, 22.7 FEET (RECORD N42 1/4"W, 24.7 FEET) WELL HEALED FACE AND TAG
-- 29" DOUGLAS FIR BEARS N21 1/2"E, 31.85 FEET (RECORD N18 3/4"E, 32.34 FEET) WELL HEALED FACE AND TAG
CORNER LIES APPROXIMATELY 20 FEET SOUTH OF THE HEAD OF A DRAW THAT RUNS N70"W.

5) SOUTH 1/16 CORNER BETWEEN SECTION 28 AND SECTION 29
FOUND 1 1/4" CAP ON 5/8" REBAR 0.5 ABOVE GROUND.
-- 12" HEMLOCK BEARS S63 1/2"W, 15.2 FEET (RECORD S52"W, 16.0 FEET) SCRIBING VISIBLE AND TAG
-- 54" DOUGLAS FIR BEARS N80"E, 39.25 FEET (RECORD EAST 40 FEET) SCRIBING VISIBLE AND TAG
CORNER LIES APPROXIMATELY 100 EAST OF VERY STEEP SOUTHWEST RUNNING DRAW.

6) WEST 1/4 CORNER SECTION 28
FOUND COUNTY BRASS CAP IN GOOD CONDITION.
-- 35" MADRONE BEARS S38 3/4"E, 41.0 FEET (RECORD S41"E, 42.0 FEET) WELL HEALED FACE AND TAG
-- 55" DOUGLAS FIR STUMP BEARS N64 1/2"W, 25.6 FEET (RECORD N65 1/2"W, 24.4 FEET) CHOPPED OUT FACE AND TAG
CORNER LIES ON WEST FACING SLOPE NEAR TOP OF SPUR RIDGE WITH CLEARCUT TO WEST.

7) NORTH 1/16 CORNER BETWEEN SECTION 28 AND SECTION 29
FOUND 1 1/4" CAP ON 5/8" IRON ROD.
-- 14" DEAD DOUGLAS FIR BEARS S47"E, 12.4 FEET (RECORD N44"W, 13.0 FEET) WELL HEALED FACE AND TAG
-- 12" DEAD DOUGLAS FIR BEARS S83"W, 11.2 FEET (RECORD N80"E, 11.2 FEET) WELL HEALED FACE AND TAG
CORNER LIES ON A WESTERLY SLOPE IN YOUNG TIMBER.

8) NORTHWEST CORNER SECTION 28
FOUND COUNTY BRASS CAP 10 FEET ABOVE GROUND.
-- 8" MAPLE BEARS S48 1/4"E, 11.6 FEET (RECORD S47"E, 11.9 FEET) WELL HEALED FACE AND TAG
-- 24" DOUGLAS FIR SNAG BEARS S16 1/2"E, 9.7 FEET (RECORD S16"E, 12.2 FEET) VISIBLE SCRIBING VISIBLE
-- 58" DOUGLAS FIR STUMP BEARS N54"W, 37.3 FEET, WELL HEALED FACE AND BT TAG
-- 36" DOUGLAS FIR STUMP BEARS N12"E, 24.5 FEET, SCRIBING VISIBLE
-- 54" DOUGLAS FIR STUMP BEARS S55"W, 14.2 FEET, WITH TAG
-- 6" HEMLOCK LOW STUMP BEARS N62"E, 39.5 FEET, WELL HEALED SCAR
CORNER LIES ON A VERY STEEP NORTHERLY SLOPE APPROXIMATELY 60 FEET WEST FROM HEAD OF A DRAW.

9) NORTHEAST CORNER SECTION 28
FOUND COUNTY BRASS CAP 10 FEET ABOVE GROUND WITH STONE ALONGSIDE.
-- 30" DOUGLAS FIR STUMP BEARS S17 1/2"W, 29.0 FEET (RECORD S54"W, 27.7 FEET) NO EVIDENCE OF FACE BUT TAG
-- 32" DOUGLAS FIR BEARS S16 1/2"E, 26.4 FEET (RECORD S17"E, 26.4 FEET) WELL HEALED FACE AND TAG
-- 19" HEMLOCK BEARS N74"E, 67.3 FEET WELL HEALED FACE AND BLM TAG.
CORNER LIES APPROXIMATELY 150' S45'E OF DIRT ROAD.

10) NORTH 1/4 CORNER SECTION 28
SET 2" ALUMINUM CAP 0.5 FEET ABOVE GROUND WHICH READS LONE ROCK TIMBER, 1/4 S21, S28, T30 R9 1995 PLS 2291.
-- 10" DOUGLAS FIR BEARS S72"W, 43.9 FEET, WE SCRIBED 1/4 S28 B.T. AND TAGGED
-- 9" DOUGLAS FIR BEARS N44"W, 35.2 FEET, WE SCRIBED 1/4 S21 B.T. AND TAGGED
-- 10" HEMLOCK BEARS N1/4 S28 B.T. AND TAGGED
-- 10" HEMLOCK BEARS N36"E, 38.5 FEET, WE SCRIBED 1/4 S21 B.T. AND TAGGED
CORNER LIES ON EXTREMELY STEEP ROCKY WEST FACING SLOPE, APPROXIMATELY 30 FEET EAST OF VERY OLD GROWN OVER ROAD GRADE.

11) CENTER 1/4 CORNER SECTION 28
SET 2" ALUMINUM CAP 0.5 FEET ABOVE GROUND WHICH READS LONE ROCK TIMBER, C1/4 S28 T30 R9 1995 PLS 2291.
-- 13" DOUGLAS FIR BEARS S714"E, 16.0 FEET WE SCRIBED C1/4, S28 B.T. PLACED A P.K. NAIL IN FACE AND TAGGED
-- 14" DOUGLAS FIR BEARS N4048"E, 10.0 FEET, WE SCRIBED C1/4 S28 B.T. PLACED A P.K. NAIL IN FACE AND TAGGED
-- 17" DOUGLAS FIR BEARS N636"W, 24.1 FEET, WE SCRIBED C1/4 S28 B.T. PLACED A P.K. NAIL IN FACE AND TAGGED
-- 15" DOUGLAS FIR BEARS S131"W, 9.4 FEET, WE SCRIBED C1/4 S28 B.T. PLACED A P.K. NAIL IN FACE AND TAGGED
CORNER LIES ON A 35% NORTHERLY FACING SLOPE, 45 FEET WEST OF BROAD SPUR RIDGE SLOPING NORTH.

LINE TREE INFORMATION

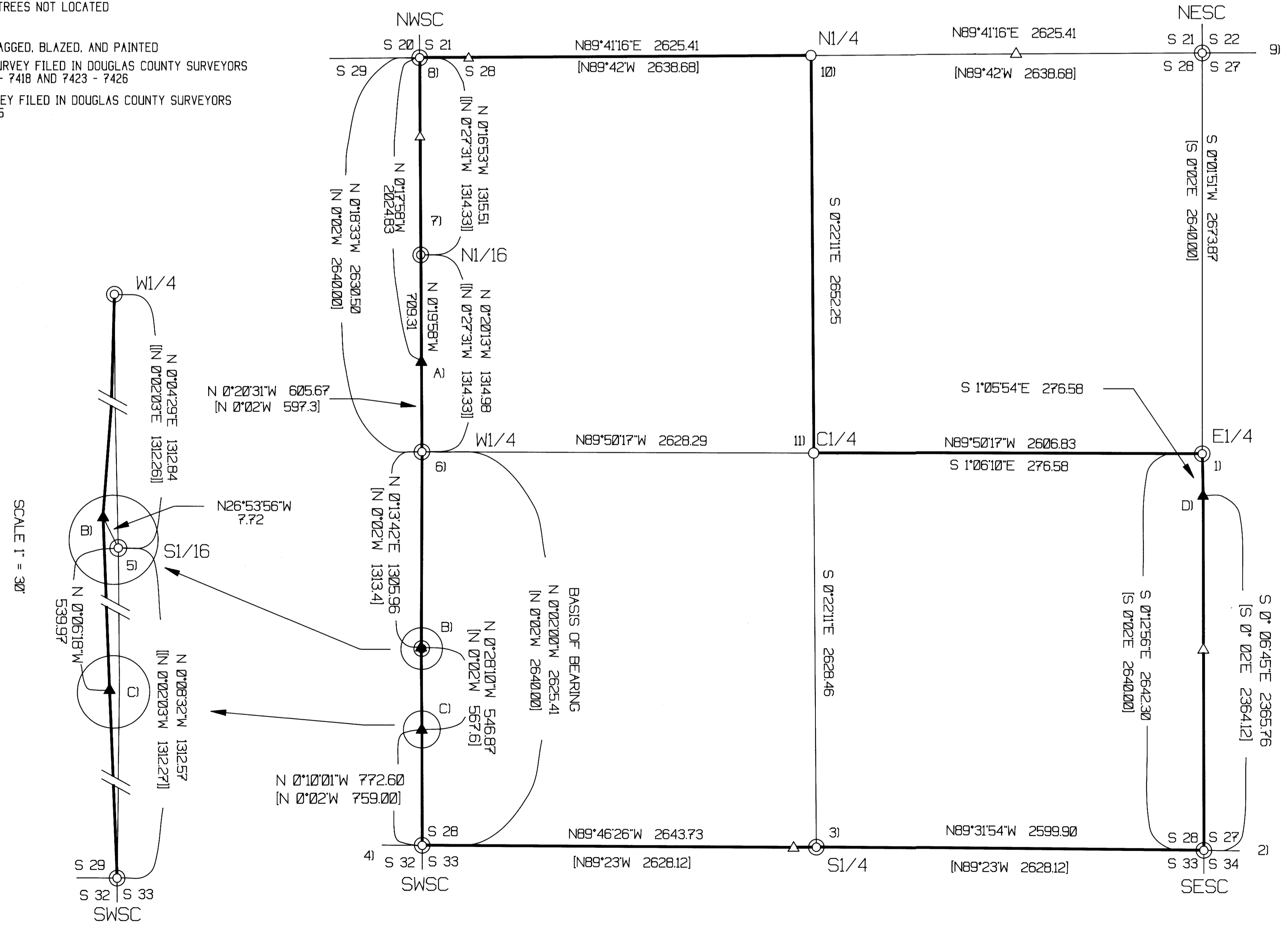
A) GLO LINE TREE WAS A 72" DOUGLAS FIR WITH 2 BLAZES ON THE NORTH AND 2 BLAZES ON THE SOUTH SIDE BEARING N 0°02'W, 597.3 FEET FROM THE W 1/4.
FOUND: 62" DOUGLAS FIR STUMP WITH 2 BLAZES ON THE NORTH SIDE AND ONE ON THE SOUTH SIDE BEARING N 0°21'W 605.7 FEET FROM THE W 1/4 AND 0.4 FEET EAST OF LINE BETWEEN W1/4 AND NWSC.
-- 10" DOUGLAS FIR BEARS S71"W, 22.6 FEET WE SCRIBE B.T. AND TAG TREE
-- 12" DOUGLAS FIR BEARS S88"E, 11.3 FEET WE SCRIBE B.T. AND TAG TREE.

B) GLO LINE TREE WAS A 48" DOUGLAS FIR WITH 2 BLAZES ON THE NORTH AND 2 BLAZES ON THE SOUTH SIDE BEARING N 0°02'W, 1328.6 FEET FROM THE SWSC.
FOUND: 81" DOUGLAS FIR SNAG WITH CHARD BARK AND FAINT CHOP MARKS ON THE NORTH AND THREE GOOD BLAZES ON THE SOUTH SIDE, BEARING N 0°18'W, 1319.5 FEET FROM THE SWSC AND 6.0 FEET WEST OF LINE BETWEEN W1/4 AND SWSC.
-- 12" HEMLOCK BEARS S361/2"W, 17.0 FEET, THIS IS ALSO ROMANSO WARE'S B.T. FOR S1/16
-- 54" DOUGLAS FIR BEARS EAST, 42.1 FEET, THIS IS ALSO ROMANSO WARE'S B.T. FOR S1/16
-- S1/16 CORNER BEARS S30"E 7.7 FEET.

C) GLO LINE TREE WAS A 38" INCH DOUGLAS FIR WITH 2 BLAZES ON THE NORTH AND 2 BLAZES ON THE SOUTH SIDE BEARING N 0°02'W, 759.0 FEET FROM THE SWSC.
FOUND: 39" DOUGLAS FIR STUMP WITH A CHOP MARK ON THE NORTH SIDE AND A FAINT BLAZE ON THE SOUTH SIDE BEARING N 0°10'W, 772.6 FEET FROM THE SWSC AND 1.8 FEET EAST OF LINE BETWEEN W1/4 AND SWSC.
-- 37" DOUGLAS FIR BEARS N28"W, 24.0 FEET WE SCRIBE B.T. AND TAG TREE.

D) GLO LINE TREE WAS A 35" DOUGLAS FIR WITH 2 BLAZES ON THE NORTH AND 2 BLAZES ON THE SOUTH SIDE BEARING N 0°02'W, 2364.12 FEET FROM THE SESC.
FOUND: 46" DOUGLAS FIR LOW STUMP WITH ONLY ONE BLAZE REMAINING ON THE NORTH SIDE BEARING N 0°07'W, 2365.8 FEET FROM THE SWSC AND 4.3 FEET EAST OF LINE BETWEEN E1/4 AND SESC.
-- 18" DOUGLAS FIR BEARS S18"W, 17.3 FEET, WE SCRIBE B.T. AND TAG TREE.
-- 11" DOUGLAS FIR BEARS N2"W, 20.25 FEET, WE SCRIBE B.T. AND TAG TREE.

- LEGEND:**
- ⊙ - FOUND MONUMENT
 - - SET 5/8" BY 40" IRON ROD WITH 2 INCH ALUMINUM CAP
 - ▲ - ORIGINAL GLO LINE TREES LOCATED
 - △ - ORIGINAL GLO LINE TREES NOT LOCATED
 - - PROJECTED LINES
 - - PROPERTY LINES FLAGGED, BLAZED, AND PAINTED
 - (I) - GLO FIELD NOTES SURVEY FILED IN DOUGLAS COUNTY SURVEYORS OFFICE PAGES 7417 - 7418 AND 7423 - 7426
 - (II) - ROMANSO WARE SURVEY FILED IN DOUGLAS COUNTY SURVEYORS OFFICE CS 58/205-5



SCALE 1" = 300'

COUNTY SURVEYORS FILE DATA
DO NOT REMOVE FROM OFFICE