

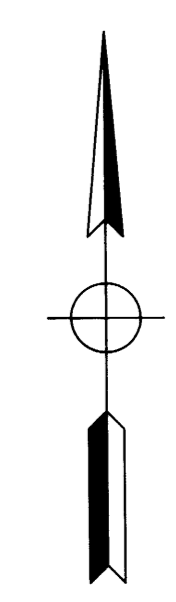
FILED
NOV 9 1993
COUNTY SURVEYOR
DOUGLAS COUNTY, OREGON

NARRATIVE:
SURVEY FOR A LOT LINE ADJUSTMENT AND TO MONUMENT THE SW 1/16 SECTION 12.
COMPUTED THE SECTION CORNER COMMON TO SECTIONS 1, 2, 11 & 12 BY DOUBLE
PROPORTION PER MANUAL OF SURVEYING INSTRUCTIONS 1973, USING TO NEAREST
CORNERS FOUND, TO THE NORTH NE CORNER, DLC NO. 42, TO THE WEST SECTION CORNER
COMMON TO SECTIONS 4, 5, 8 & 9, EAST 1/4 CORNER COMMON TO SECTION 1 & 12 AND
TO THE SOUTH SW CORNER COMMON TO SECTION 11, 12, 13 & 14. THEN COMPUTED THE
WEST 1/4 CORNER SECTION 12 MIDWAY BETWEEN THE NW CORNER AND THE SW CORNER
OF SECTION 12. COMPUTED THE CENTER 1/4 CORNER BY INTERSECTION WITH THE 4 1/4
CORNERS OF SECTION 12, THEN SUBDIVIDED THE SW 1/4 BY SINGLE PROPORTION AND
INTERSECTION AS PER MANUAL. THEN MONUMENT THE NORTH 1/3 OF THE NORTH 1/2
OF THE NORTHWEST 1/4 OF SECTION 12.
FIELD CREW: MARC HOLT & ERIC ZIMMERMAN
EQUIPMENT: LIETZ SET 4 TOTAL STATION & TRIMBLE 4000 ST GPS RECEIVERS
OFFICE: ALLEN TEITZEL
DRAFTING: ELIZABETH TEITZEL

BASE OF BEARING PER GPS OBSERVATION
ROTATED TO TRUE:
θ = -1°53'02"
GRID FACTOR = 0.99988593

LEGEND

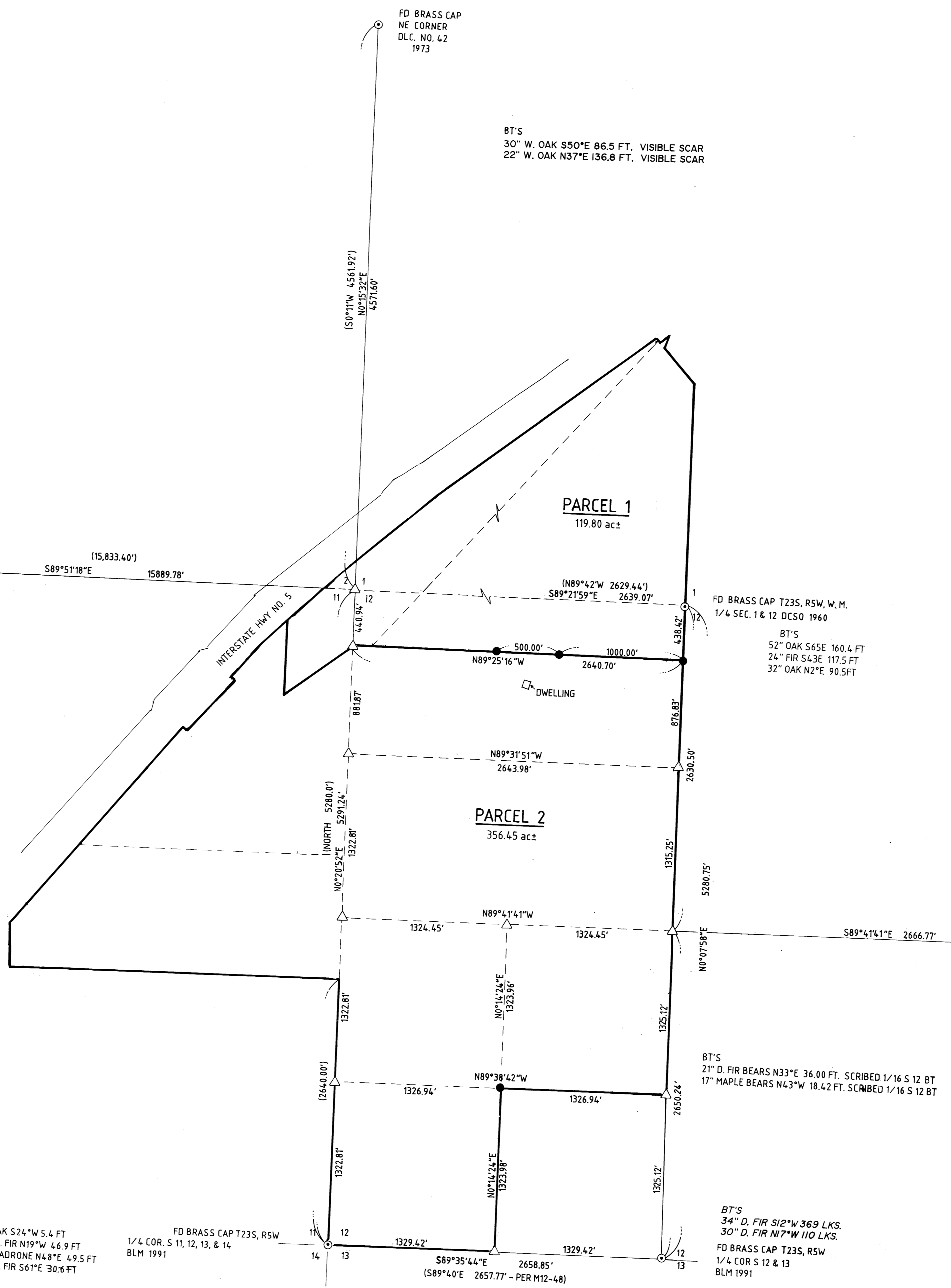
- SET 3/8" x 30" I.R. W/CAP MARKED "i.e. ENGINEERING"
- △ COMPUTED POINT
- BRASS CAPS AS NOTED



FD BRASS CAP
COUNTY SURVEYOR'S OFFICE
1969.
T23S, R5W

BT'S
29" B. OAK S43°W 277.4 FT. VISIBLE SCAR
31" W. OAK S84°E 271.3 FT. VISIBLE SCAR

APPROVAL:
Keith L. Cubic 10/20/93
DOUGLAS COUNTY PLANNING DEPARTMENT DATE



COUNTY SURVEYORS FILE DATA
DO NOT REMOVE FROM OFFICE

	LOT LINE ADJUSTMENT	
	LYING IN THE SW 1/4 SEC. 1, SE 1/4 SEC. 2, NE 1/4 SEC. 11, SE 1/4 SEC. 11, NW 1/4 SEC. 12, AND THE SW 1/4 SEC. 12, T23S, R5W, W.M. DOUGLAS COUNTY, OREGON	
SURVEYED FOR: DORIS MEANS 587 HALO TRAIL YONCALLA, OR 97499	SURVEYED BY: i.e. 1205 S.E. Court Street Roseburg, Oregon 97470 PHONE (503) 673-0166 FAX (503) 440-9392	SCALE: 1" = 500' DATE: SEPT. 1993 J.N.: 550-01 PAGE: 1 OF 1