

FILE #
Date: 10-11-94 By: AB
This survey consists of:
Map: M 119-40
Narrative:
Corner Pkt:
DOUGLAS COUNTY, OREGON
SURVEYOR



SCALE 1"=400'

NARRATIVE

THIS SURVEY WAS MADE IN JULY AND AUGUST OF 1994 BY DANIEL W. BAKER, OF BAKER AND ASSOCIATES, SURVEYORS, 1385 OAK STREET, SUITE 3, EUGENE, OREGON. THE PURPOSE OF THIS SURVEY WAS TO LOCATE AND MARK, IN THE FIELD, THE PROPERTY LINES OF WEYERHAEUSER COMPANY OWNERSHIP IN SECTION 32, T23S, R4W, W.M. A WILD T1000 WITH DISS EDM WAS USED TO PERFORM THE SURVEY, WITH A MINIMUM ERROR OF CLOSURE OF BETTER THAN 1:9000 BEFORE ADJUSTMENT. THE BASIS OF BEARING FOR THIS SURVEY WAS BY SOLAR OBSERVATION TAKEN ON JULY 1, 1994. THIS SURVEY WAS DONE CONCURRENTLY WITH THE SURVEY OF SECTION 33, T23S, R4W, W.M. THE SOUTHWEST AND SOUTHEAST SECTION CORNERS, AND NORTH, SOUTH, EAST, AND WEST QUARTER SECTION CORNERS WERE FOUND AND USED FOR CONTROL. THE CENTER 1/4 CORNER WAS SET AT THE INTERSECTION OF THE NORTH/SOUTH AND EAST/WEST CENTERLINES OF SECTION 32 PER THE "1973 BLM MANUAL OF INSTRUCTION". THE CENTER EAST 1/16 CORNER WAS SET AT THE MIDPOINT BETWEEN THE CENTER 1/4 AND EAST 1/4 CORNERS. THE CENTER WEST 1/16 CORNER WAS SET AT THE MIDPOINT BETWEEN THE CENTER 1/4 AND WEST 1/4 CORNERS. THE EAST 1/16 CORNER, ON THE SOUTH LINE OF SECTION 32 ONLY, WAS SET AT MIDPOINT BETWEEN THE SOUTHWEST SECTION CORNER AND THE SOUTH 1/4 CORNER. THE WEST 1/16 CORNER ON THE SOUTH LINE WAS SET AT MIDPOINT BETWEEN THE SOUTHWEST SECTION CORNER AND THE SOUTH 1/4 CORNER OF SECTION 32. THE CORNERS SET IN THIS SURVEY WERE MONUMENTED WITH IRON PIPES AND A BRASS CAP, AS NOTED. ALL CORNERS WERE MARKED WITH PROPER MARKING PER "1973 BLM MANUAL OF INSTRUCTION", AND ALSO MARKED "PLS 1978". THE TRUE PROPERTY LINE WAS MARKED BY BLAZING TREES (BLAZES PAINTED RED) ON EITHER SIDE OF THE TRUE LINE. BEARING TREES ESTABLISHED IN THIS SURVEY WERE BASED ON MAGNETIC 20' DECLINATION, WITH DISTANCES TO A "W" SPIKE IN THE LOWER BLAZE.

29

32

1/4 CORNER 29, 32

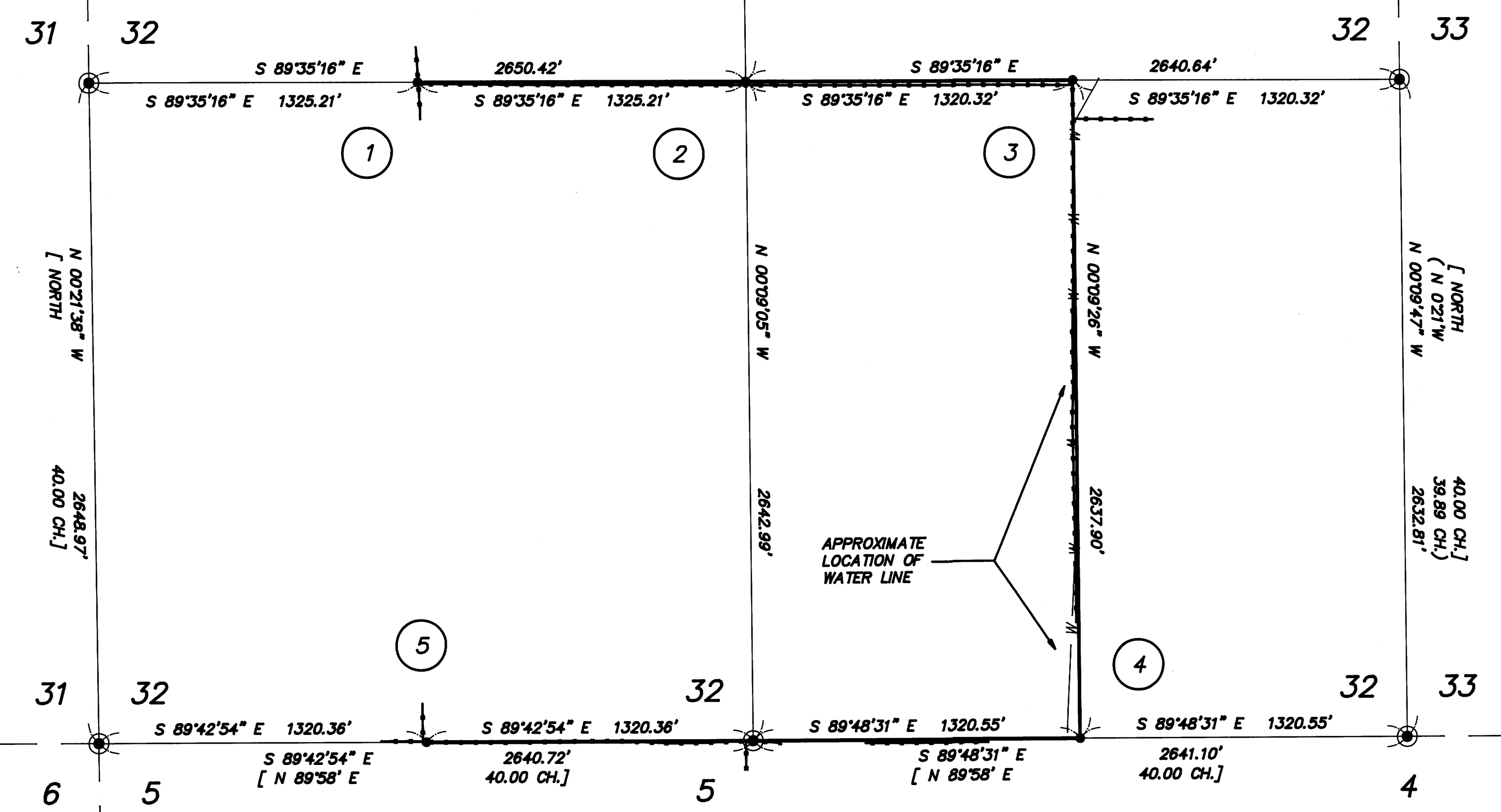
FOUND: 2-1/2" U.S.B.L.M. BRASS CAP DATED 1976
6" ROTTEN FIR STUB, N 43 E, 22.1 FT.
RECORD: N 39-1/2 E, 43 LKS. - 1976 BLM
8" FIR, S 8 W, 23.5 FT. - CLOSED FACE
RECORD: S 4-3/4 W, 36 LKS. - 1976 BLM
SET:
15" FIR, N 42 E, 46.0 FT. TO "W" NAIL - SCRIBED "1/4 S29 BT"
12" W. FIR, S 83 E, 19.1 FT. TO "W" NAIL - SCRIBED "1/4 S32 BT"
9" FIR, N 4 W, 19.6 FT. TO "W" NAIL - SCRIBED "1/4 S29 BT"

1/4 CORNER 32, 33

FOUND: 2-1/2" U.S.B.L.M. BRASS CAP DATED 1976
16" FIR, N 32 E, 10.7 FT. - CLOSED FACE
RECORD: N 28-1/2 E, 16 LKS. - 1976 BLM
10" FIR, N 73 W, 14.9 FT. - CLOSED FACE
RECORD: N 73 W, 22.5 LKS. - 1976 BLM

1/4 CORNER 31, 32

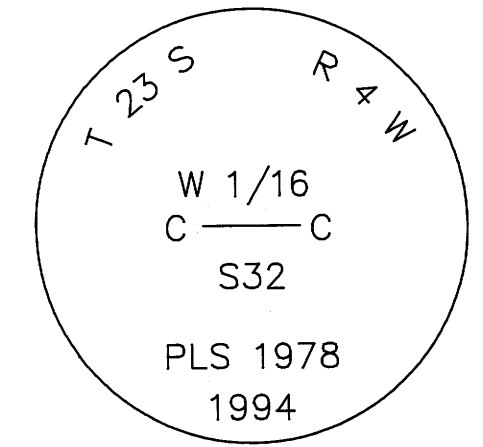
FOUND: 2-1/2" U.S.B.L.M. BRASS CAP DATED 1963
28" FIR, S 85 W, 155.1 FT.
RECORD: S 85 W, 235 LKS. - 1963 BLM



1

CENTER WEST 1/16 CORNER

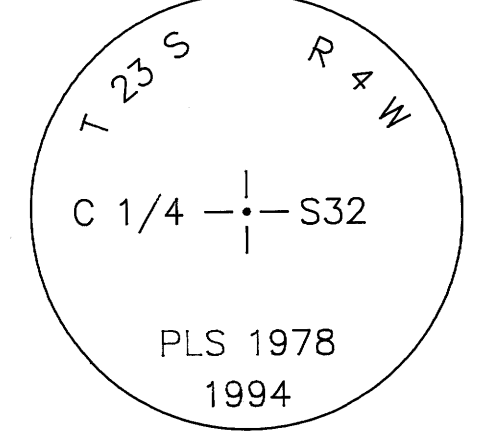
SET: 2-1/4" X 48" IRON PIPE WITH 2-1/2" BRASS CAP DATED 1994
7" FIR, S 32 W, 30.3 FT. TO "W" NAIL - SCRIBED "CW 1/16 S32 BT"
22" OAK, S 31 E, 29.8 FT. TO "W" NAIL - SCRIBED "CW 1/16 S32 BT"
METAL FENCE POST 1' NORTH



2

CENTER 1/4 CORNER

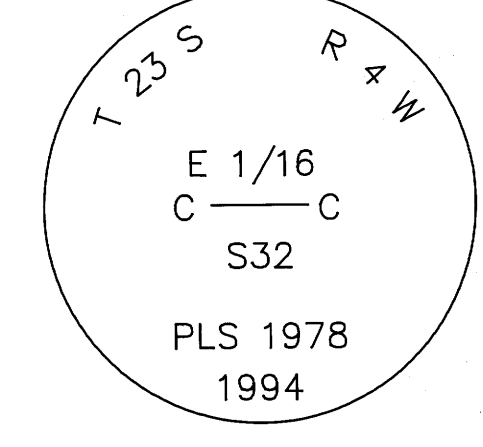
SET: 2-1/4" X 36" IRON PIPE WITH 2-1/2" BRASS CAP DATED 1994
6" GATE POST, S 3 E, 11.8 FT. TO "W" NAIL - SCRIBED "C 1/4 B0"
POWER POLE, N 13 E, 173.1 FT. TO "W" NAIL
14" FIR STUMP, S 82-1/2 E, 138.5 FT. TO "W" NAIL - SCRIBED "C 1/4 T23S R4W S32 BT"
12" FIR, N 84 W, 123.8 FT. TO "W" NAIL - SCRIBED "C 1/4 T23S R4W S32 BT"
METAL FENCE POST 1' NORTH



3

CENTER EAST 1/16 CORNER

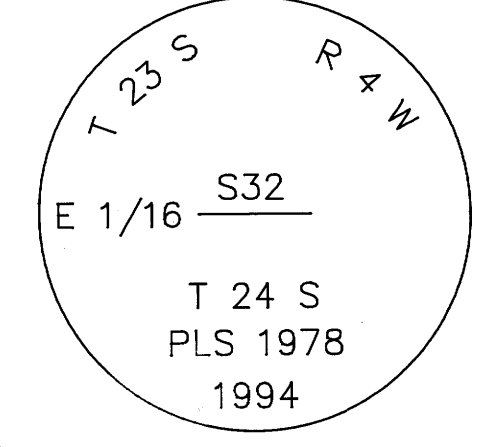
SET: 2-1/4" X 44" IRON PIPE WITH 2-1/2" BRASS CAP DATED 1994
13" ASH, S 14 W, 89.8 FT. TO "W" NAIL - SCRIBED "CE 1/16 S32 BT"
20" OAK, N 82 W, 97.9 FT. TO "W" NAIL - SCRIBED "CE 1/16 S32 BT"
METAL FENCE POST 1' NORTH



4

EAST 1/16 CORNER 32 ONLY

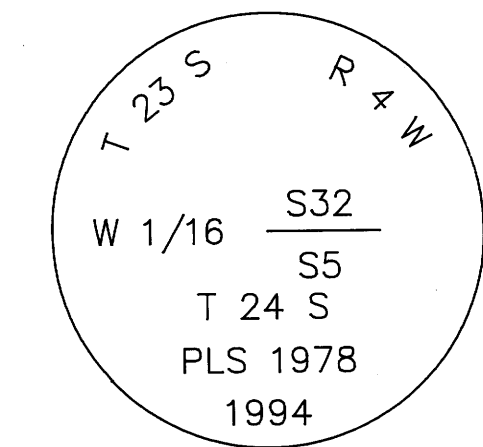
SET: 2-1/2" BRASS CAP CEMENTED INTO ROCK DATED 1994
17" FIR, N 33 E, 8.5 FT. TO "W" NAIL - SCRIBED "E 1/16 S32 BT"
14" W. FIR, N 49 W, 27.4 FT. TO "W" NAIL - SCRIBED "E 1/16 S32 BT"
METAL FENCE POST 2' NORTH



5

WEST 1/16 CORNER 5, 32

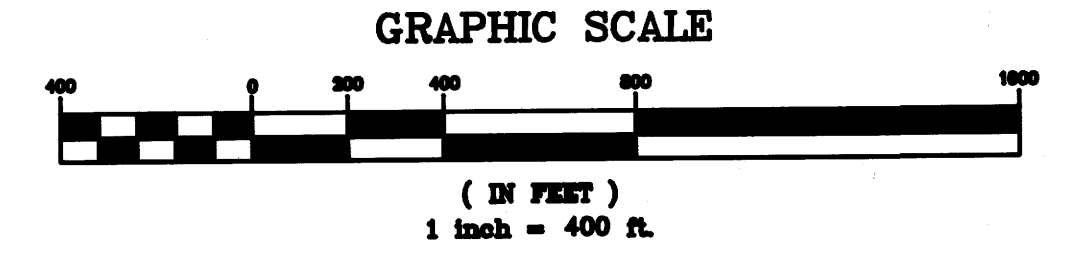
SET: 1-1/2" X 36" IRON PIPE WITH 2-1/2" BRASS CAP DATED 1994
7" FIR, S 69 E, 9.8 FT. TO "W" NAIL - SCRIBED "W 1/16 S5 BT"
13" FIR, N 69 E, 12.6 FT. TO "W" NAIL - SCRIBED "W 1/16 S32 BT"
METAL FENCE POST 1' EAST



BASIS OF BEARING: SOLAR OBSERVATION

LEGEND

- ⊙ - CORNERS FOUND (AS NOTED)
- - CORNERS SET (AS NOTED)
- - PROPERTY LINE
- [] - RECORD DATA - 1855 GLO
- () - RECORD DATA - 1976 BLM
- - - - EXISTING FENCE



SECTION CORNER 5, 6, 31, 32

FOUND: DOUGLAS COUNTY BRASS CAP DATED 1963
30" W. OAK LOG, N 70 W, 103.0 FT. - DOWN AND OUT
RECORD: N 70 W, 156 LKS. - 1855 GLO
28" I. CEDAR, S 41 W, 21.2 FT. - CLOSED FACE
RECORD: S 39 W, 21.4 FT. - 1963 DOUGLAS COUNTY
28" FIR, S 10 E, 34.9 FT. - CLOSED FACE
RECORD: S 10 E, 35.6 FT. - 1963 DOUGLAS COUNTY
SET: 15" ALDER (IN CLUMP), N 5 E, 18.1 FT. TO "W" NAIL - BARK SCRIBED "T23S R4W S32 BT"
10" FIR, N 73 W, 68.0 FT. TO "W" NAIL - SCRIBED "T23S R4W S31 BT"

SOUTH 1/4 CORNER 5, 32

FOUND: 2-1/2" U.S.B.L.M. BRASS CAP DATED 1979
12" FIR, N 18 E, 28.5 FT. - CLOSED FACE
RECORD: N 13 E, 43 LKS. - 1979 BLM
12" OAK STUMP, S 46 E, 8.0 FT.
RECORD: S 36 E, 8.0 FT. - 1978 BLM ADMINISTRATIVE SURVEY
18" OAK, S 62 W, 13.8 FT.
RECORD: S 60 W, 12.5 FT. - 1978 BLM ADMINISTRATIVE SURVEY
METAL FENCE POST ALONGSIDE CORNER

SECTION CORNER 32, 33 ONLY

FOUND: DOUGLAS COUNTY BRASS CAP DATED 1963
65" FIR STUMP, S 86 E, 29.7 FT.
RECORD: S 86 E, 45 LKS. - 1855 GLO
50" FIR STUMP, N 70 E, 27.7 FT.
RECORD: N 70 E, 42 LKS. - 1855 GLO
60" FIR STUMP, N 43 W, 25.3 FT.
RECORD: N 43 W, 38 LKS. - 1855 GLO
54" FIR, N 74 W, 64.8 FT. - OPEN FACE NO SCRIBING
RECORD: N 75 W, 85.0 FT. - 1963 DOUGLAS COUNTY
17" CEDAR STUMP, S 73 E, 38.2 FT.
RECORD: S 73 E, 38.0 FT. - 1963 DOUGLAS COUNTY

REGISTERED PROFESSIONAL LAND SURVEYOR
DANIEL W. BAKER
1978
EXPIRES 12/31/95

SURVEY IN ALL QTRS. SEC. 32, T23S, R4W, W.M. DOUGLAS COUNTY, OREGON
CLIENT: WEYERHAEUSER COMPANY
DRAWN BY: DHW
DATE: 9/6/94
FILE: WEYCO\230432
BAKER AND ASSOCIATES, SURVEYORS
1385 OAK STREET - SUITE 3
EUGENE, OREGON (503) 343-7243

COUNTY SURVEYORS FILE DATA DO NOT REMOVE FROM OFFICE