

FILED  
 Date: 10-6-94 By: JLP  
 This survey consists of:  
 Map: M119-39  
 Narrative: C.S. 65/2-7  
 Corner Rpt: C.S. 65/2-7  
 DOUGLAS COUNTY  
 SURVEYOR JLP

**NARRATIVE**

THIS SURVEY WAS MADE IN JUNE, JULY, AND AUGUST OF 1994 BY DANIEL W. BAKER, OF BAKER AND ASSOCIATES, SURVEYORS, 1385 OAK STREET, SUITE 3, EUGENE, OREGON. THE PURPOSE OF THIS SURVEY WAS TO LOCATE AND MARK, IN THE FIELD, CERTAIN PROPERTY LINES OF MEYERHAEUSER COMPANY OWNERSHIP IN SECTION 14, T22S, R5W, W.M. A WILD T1000 WITH DISS EDM, A WILD T1000 WITH DI1600 EDM, AND A TOPCON GTS 310 WERE USED TO PERFORM THE SURVEY; WITH A MINIMUM ERROR OF CLOSURE BETTER THAN 1:5000 BEFORE ADJUSTMENT. THE BASIS OF BEARING FOR THIS SURVEY WAS BY SOLAR OBSERVATION AS COORDINATED WITH PREVIOUS WORK BY THIS COMPANY IN SECTION 13, BEING RECORDED AS SURVEY M105-27. THE SOUTHWEST AND SOUTHEAST SECTION CORNERS, NORTH, SOUTH, EAST, AND WEST 1/4 SECTION CORNERS, USED FOR CONTROL HAD BEEN TIED ON THE SAME COORDINATE SYSTEM OF SURVEYS IN ADJACENT SECTIONS BY THIS COMPANY. REFERENCE IS MADE TO SURVEYS M105-27, M105-54, M105-69, AND M115-53. ADDITIONAL REFERENCE IS MADE TO C.S. FILE #42/33 FOR THE FOUND CENTER 1/4 CORNER OF SECTION 14. THE 1972 U.S.B.L.M. BRASS CAP AT THE WEST 1/4 CORNER HAD BEEN DISPLACED AND BURIED BY LOGGING ACTIVITY. THE MONUMENT WAS RECOVERED AND RESET AT THE ORIGINAL POSITION BY USING BEARING TREE AND SURVEY INFORMATION FROM OUR SURVEY IN SECTION 15 AND RECORDED AS M105-54. THE CENTER 1/4 CORNER AS SET AND RECORDED AS C.S. FILE #42/33 WAS FOUND TO BE IN SUBSTANTIALLY CORRECT POSITION AND WAS THEREFORE ACCEPTED. THE CENTER EAST 1/16 CORNER WAS SET AT MIDPOINT BETWEEN THE CENTER 1/4 AND EAST 1/4 CORNERS. THE WEST 1/16 CORNER ON THE SOUTH LINE WAS SET AT MIDPOINT BETWEEN THE SOUTHWEST SECTION CORNER AND THE SOUTH 1/4 CORNER. THE C-S-N-SE AND C-S-N-S 1/256 CORNERS WERE SET AS APPROPRIATE PER THE "1973 BLM MANUAL OF INSTRUCTION". PROPERTY CORNERS WERE SET ACCORDINGLY. REFERENCE IS MADE TO DOUGLAS COUNTY OFFICIAL RECORDS VOLUME 285 PAGE 78-88. THE CORNERS SET IN THIS SURVEY WERE MONUMENTED, AS NOTED. ALL CORNERS WERE MARKED WITH PROPER MARKING PER "1973 BLM MANUAL OF INSTRUCTION", AND ALSO MARKED "PLS 1978", AS SHOWN. THE TRUE PROPERTY LINE WAS MARKED BY BLAZING TREES (BLAZES PAINTED RED) ON EITHER SIDE OF THE TRUE LINE. BEARING TREES SET IN THIS SURVEY WERE BASED ON MAGNETIC 20' DECLINATION, WITH DISTANCES TO A "W" SPIKE IN THE LOWER BLAZE.

**1/4 CORNER 11, 14**

NOT TIED THIS SURVEY  
FOR CORNER DATA SEE M115-53

**SECTION CORNER 11, 12, 13, 14**

NOT TIED THIS SURVEY  
FOR CORNER DATA SEE M105-27

SCALE 1"=400'

BASIS OF BEARING: SOLAR OBSERVATION  
PER M105-27, (SEE NARRATIVE)

**LEGEND**

- N 1/16 CORNER 13, 14**  
 NOT TIED THIS SURVEY  
 FOR CORNER DATA SEE M105-27
- NE 1/16 CORNER**  
 TIED THIS SURVEY  
 FOR CORNER DATA SEE M115-53
- 1/4 CORNER 13, 14**  
 NOT TIED THIS SURVEY  
 FOR CORNER DATA SEE M105-27
- - CORNERS FOUND (AS NOTED)
  - - CORNERS SET (AS NOTED)
  - - CALCULATED POINT (NOT SET)
  - - PROPERTY LINE
  - { } - RECORD DATA - 1855 GLO
  - { } - RECORD DATA - 1973 BLM
  - [ ] - RECORD DATA - C.S. FILE 42/33
  - ( ) - RECORD DATA - M105-27, M105-54, M105-69, M115-53

**CENTER 1/4 CORNER**

FOUND: 1" IRON PIPE - C.S. FILE #42/33  
 33" FIR STUMP, N 50 W, 25.5 FT. TO "W" NAIL  
 RECORD: N 50 W, 25.8 FT. - C.S. FILE #42/33  
 22" FIR SNAG, S 50 E, 28.0 FT. CENTER MEASURE  
 RECORD: S 50 E, 28.0 FT. - C.S. FILE #42/33  
 18" OAK, S 64 W, 11.8 FT. CENTER MEASURE  
 RECORD: UNKNOWN

SET: 10" WHITE FIR, S 24 E, 9.7 FT. - SCRIBED "C1/4 S14 BT"  
 8" FIR, N 87 E, 6.9 FT. - SCRIBED "C1/4 S14 BT"

**1/4 CORNER 14, 15**

FOUND: 2-1/2" U.S.B.L.M. BRASS CAP DATED 1972  
 BURIED AND OUT OF POSITION DUE TO LOGGING.  
 REPLACED BY EXISTING BT AND TRANSIT NOTE  
 DATA FROM PREVIOUS WORK AT THIS CORNER.  
 SEE M105-54.

38" FIR STUMP, N 86-1/4 E, 47.0 FT. - CLOSED FACE  
 20" FIR STUMP, S 87-1/4 E, 44.3 FT. - CLOSED FACE  
 52" FIR STUMP, N 14-3/4 W, 34.3 FT. - SCRIBING VISIBLE  
 RECORD: N 15 W, 50 LKS. - 1855 OBT

SET: 30" FIR STUMP, S 10 W, 37.2 FT.  
 6 FT. METAL FENCE POST 1 FT. EAST

**S 1/16 CORNER 14, 15**

NOT TIED THIS SURVEY  
FOR CORNER DATA SEE M105-54

**SECTION CORNER 14, 15, 22, 23**

TIED THIS SURVEY  
FOR CORNER DATA SEE M105-54

**WEST 1/16 SECTION 14, 23**

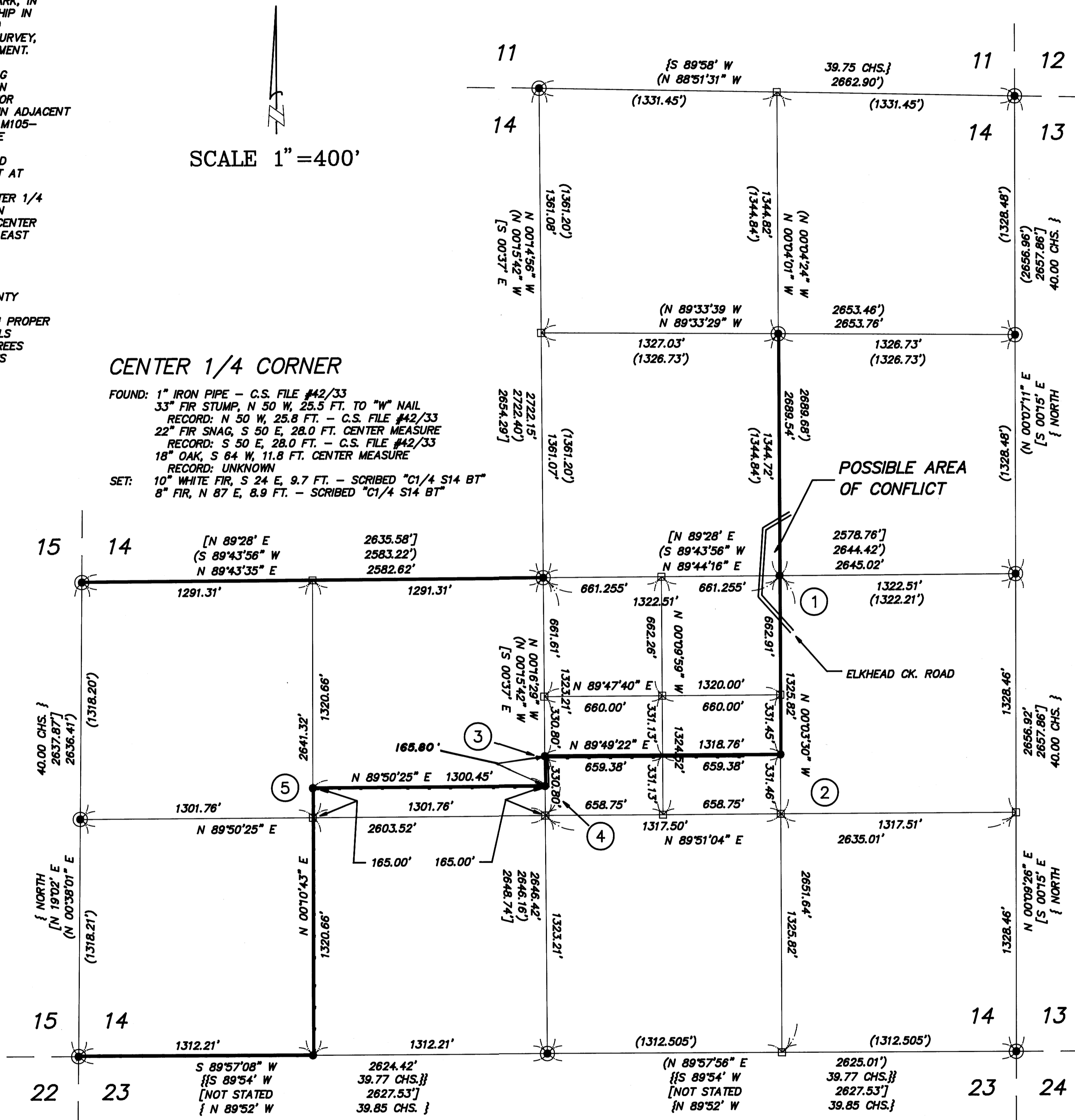
SET: 1-1/4" X 36" IRON PIPE WITH 2-1/2" BRASS CAP  
 9" FIR, N 43 E, 21.8 FT. - SCRIBED "W1/16 S14 BT"  
 10" FIR, N 42 W, 23.8 FT. - SCRIBED "W1/16 S14 BT"  
 4 FT. METAL FENCE POST 1 FT. NORTH

**S 1/4 CORNER 14, 23**

FOUND: 2-1/2" U.S.B.L.M. BRASS CAP DATED 1973  
 CORNER FALLS ON OPEN HILLSIDE  
 NO BEARING TREES  
 SEE ALSO M105-69

**SECTION CORNER 13, 14, 23, 24**

NOT TIED THIS SURVEY  
FOR CORNER DATA SEE M105-69



**1 CE 1/16 CORNER**

SET: 5/8" X 30" REBAR WITH 2" ALUMINUM CAP  
 BURIED 6" BENEATH THE SURFACE  
 17" ASH, S 45 W, 135.2 FT. - SCRIBED "CE 1/16 S14 BT"  
 15" ASH N 68 W, 124.8 FT. - SCRIBED "CE 1/16 S14 BT"

**2 C-S-N-SE 1/256 CORNER**

SET: 2" X 30" IRON PIPE WITH 2-1/2" BRASS CAP  
 10" FIR, N 34 W, 20.8 FT. - SCRIBED "1/256 BT"  
 22" FIR, N 74 E, 11.8 FT. - SCRIBED "1/256 BT"  
 6 FT. FENCE POST 1 FT. NORTH

**3 C-S-N-S 1/256 CORNER**

SET: 1-1/2" X 32" IRON PIPE WITH 2-1/2" BRASS CAP  
 17" FIR, N 33 W, 18.9 FT. - SCRIBED "1/256 BT"  
 12" FIR, S 79 W, 12.5 FT. - SCRIBED "1/256 BT"  
 6 FT. FENCE POST 1 FT. WEST

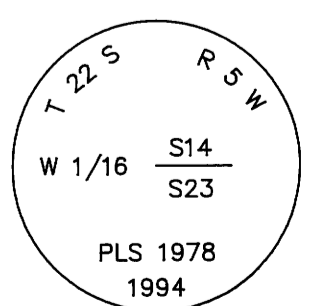
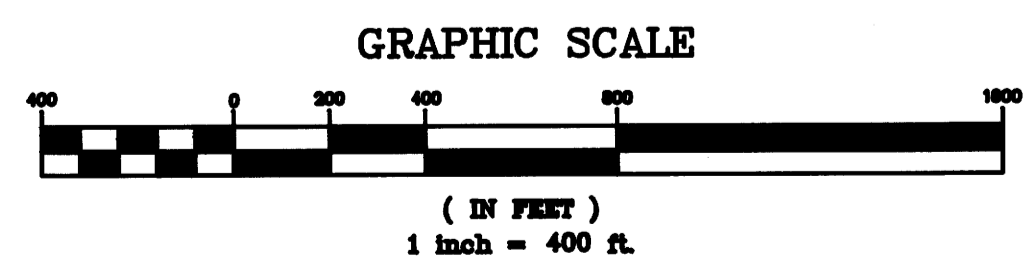
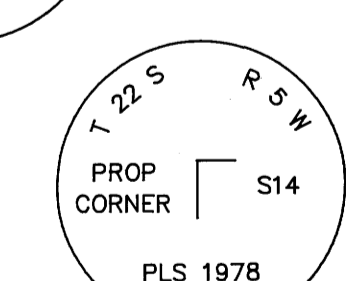
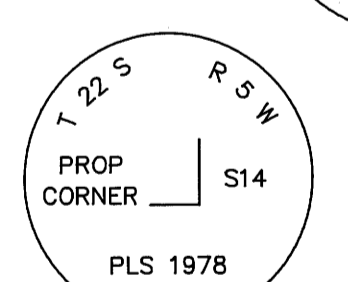
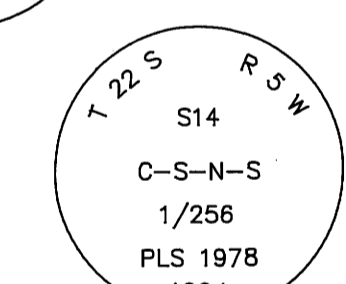
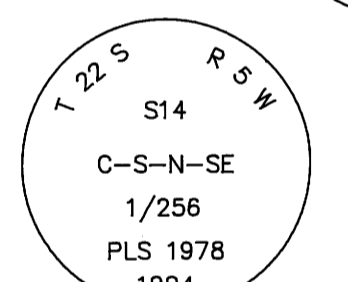
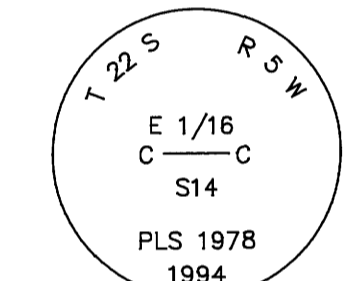
**4 PROPERTY CORNER**

SET: 1-1/2" X 36" IRON PIPE WITH 2-1/2" BRASS CAP  
 12" MAPLE, S 66 E, 70.2 FT. - SCRIBED "PC BT"  
 23" FIR, N 46-1/2 W, 36.3 FT. - SCRIBED "PC BT"  
 6 FT. FENCE POST 1 FT. NORTH

**5 PROPERTY CORNER**

SET: 5/8" X 30" REBAR WITH 2" ALUMINUM CAP  
 7" FIR, S 67-1/2 E, 46.8 FT. - SCRIBED "PC BT"  
 16" FIR, S 6 W, 28.8 FT. - SCRIBED "PC BT"  
 6 FT. FENCE POST 1 FT. WEST

\* FOR ADDITIONAL INFORMATION REGARDING THIS CORNER  
SEE C.S. FILE 65/2-7.



COUNTY SURVEYORS FILE DATA  
DO NOT REMOVE FROM OFFICE

REGISTERED PROFESSIONAL LAND SURVEYOR  
 Daniel W. Baker  
 OREGON JULY 16, 1988  
 DANIEL W. BAKER  
 1978  
 EXPIRES 12/31/95

<b>SURVEY IN</b>	
NE 1/4, SE 1/4, SW 1/4, SECTION 14, T22S, R5W, W.M.	
DOUGLAS COUNTY, OREGON	
CLIENT:	WEYERHAEUSER COMPANY
DRAWN BY:	DHW
DATE:	8/12/94
FILE:	220514
BAKER AND ASSOCIATES, SURVEYORS 1385 OAK STREET - SUITE 3 EUGENE, OREGON (503) 343-7243	