

FILED

Date: 10-6-94 By: JP
This survey consists of:
Map: M 119-38
Narrative:
Corner Rpt.:

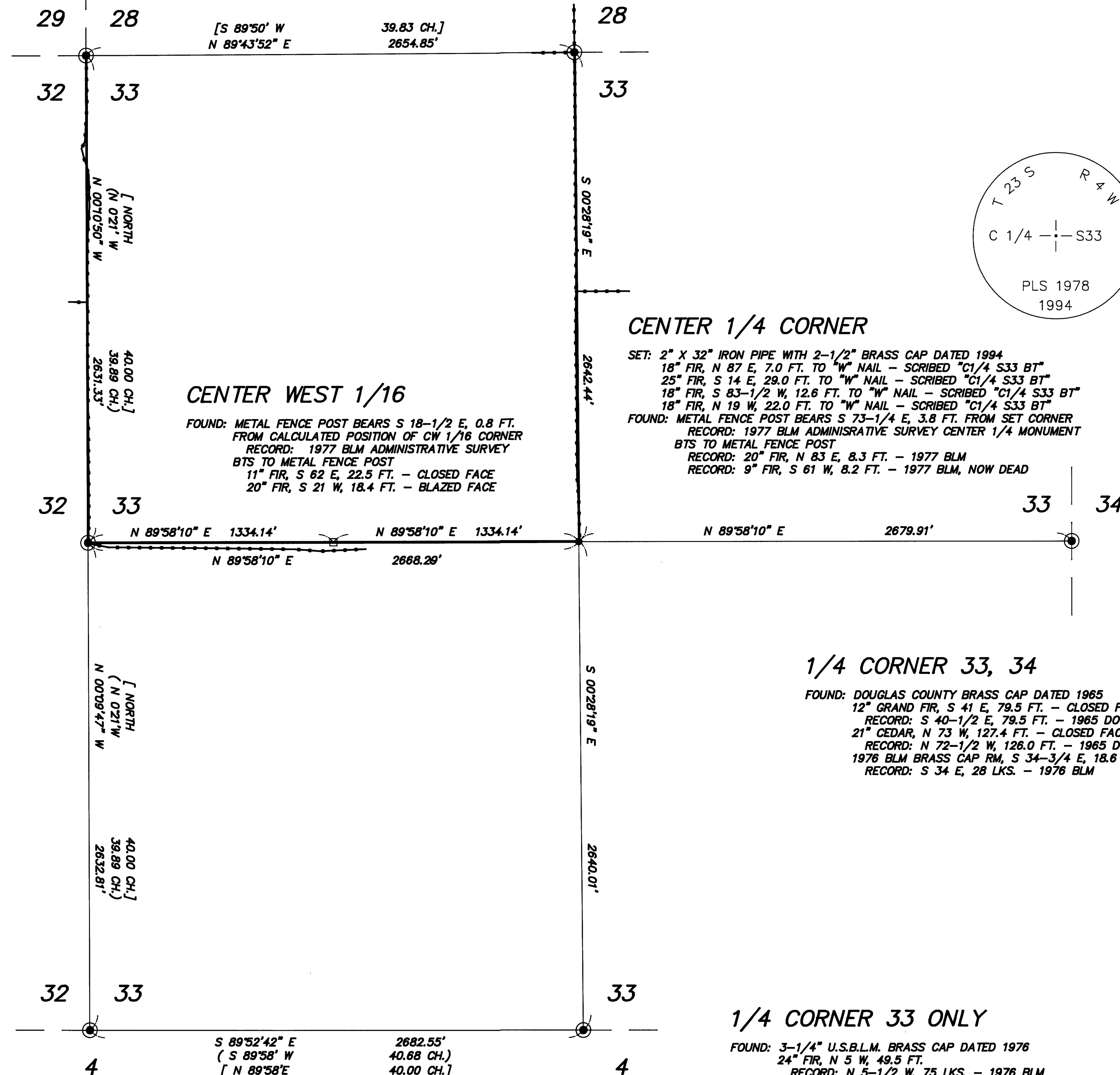
DOUGLAS COUNTY SURVEYOR

SECTION CORNER 28, 29, 32, 33

FOUND: DOUGLAS COUNTY BRASS CAP DATED 1963
32" WHITE OAK, N 9 E, 90.1 FT. - UPROOTED REMAINS
RECORD: N 9 E, 90.0 FT. - 1932 DOUGLAS COUNTY
56" CEDAR, S 28 E, 240.2 FT.
RECORD: S 28 E, 240.7 FT. - 1932 DOUGLAS COUNTY
19" ASH, S 28 W, 18.0 FT. - CLOSED FACE
RECORD: S 28 W, 18.3 FT. - 1963 DOUGLAS COUNTY
18" FIR, S 54 E, 91.6 FT. TO "W" NAIL
RECORD: S 54 E, 91.6 FT. TO "W" NAIL - 1976 WEYERHAEUSER CO.
SET: 8" ASH, N 6 W, 16.4 FT. TO "W" NAIL - SCRIBED "T23S R4W S29 BT"

1/4 CORNER 28, 33

FOUND: 2-1/2" U.S.B.L.M. BRASS CAP DATED 1976
52" FIR SNAG, N 21 E, 34.1 FT. - CLOSED FACE
RECORD: N 15 E, 50 LKS. - 1855 GLO
10" MADRONE, WEST, 21.0 FT. TO "W" NAIL
RECORD: WEST, 21.0 FT. TO "W" NAIL - 1976 WEYERHAEUSER COMPANY
SET: 8" FIR, N 8 W, 39.8 FT. TO "W" NAIL - SCRIBED "1/4 S28 BT"
6" FIR, N 77 W, 19.3 FT. TO "W" NAIL - SCRIBED "1/4 S28 BT"
6" FIR, S 47 W, 9.5 FT. TO "W" NAIL - SCRIBED "1/4 S33 BT"



SCALE 1"=400'

NARRATIVE

THIS SURVEY WAS MADE IN JULY AND AUG. OF 1994 BY DANIEL W. BAKER, OF BAKER AND ASSOCIATES, SURVEYORS, 1385 OAK STREET, SUITE 3, EUGENE, OREGON. THE PURPOSE OF THIS SURVEY WAS TO LOCATE AND MARK, IN THE FIELD, THE PROPERTY LINES OF WEYERHAEUSER COMPANY OWNERSHIP IN SECTION 33, T23S, R4W, W.M. A WILD T1000 WITH DISS EDM WAS USED TO PERFORM THE SURVEY, WITH A MINIMUM ERROR OF CLOSURE OF BETTER THAN 1:7000 BEFORE ADJUSTMENT. THE BASIS OF BEARING FOR THIS SURVEY WAS BY SOLAR OBSERVATION TAKEN ON JULY 1, 1994. THIS SURVEY WAS DONE CONCURRENTLY WITH THE SURVEY OF SECTION 32, T23S, R4W, W.M. THE NORTHWEST SECTION CORNER, NORTH, SOUTH, EAST, AND WEST QUARTER SECTION CORNERS WERE FOUND AND USED FOR CONTROL. THE CENTER 1/4 CORNER WAS SET AT THE INTERSECTION OF THE NORTH/SOUTH AND EAST/WEST CENTERLINES OF SECTION 33 PER THE "1973 BLM MANUAL OF INSTRUCTION". FENCE POST CORNERS SET AT THE CENTER WEST 1/16 AND THE CENTER 1/4 BY A 1977 BLM ADMINISTRATIVE SURVEY WERE DISREGARDED. THE CORNERS SET IN THIS SURVEY WERE MONUMENTED WITH AN IRON PIPE AND BRASS CAP, AS NOTED. ALL CORNERS WERE MARKED WITH PROPER MARKING PER "1973 BLM MANUAL OF INSTRUCTION", AND ALSO MARKED "PLS 1978". THE TRUE PROPERTY LINE WAS MARKED BY BLAZING TREES (BLAZES PAINTED RED) ON EITHER SIDE OF THE TRUE LINE. BEARING TREES ESTABLISHED IN THIS SURVEY WERE BASED ON MAGNETIC 20° DECLINATION, WITH DISTANCES TO A "W" SPIKE IN THE LOWER BLAZE.

1/4 CORNER 32, 33

FOUND: 2-1/2" U.S.B.L.M. BRASS CAP DATED 1976
16" FIR, N 32 E, 10.7 FT. - CLOSED FACE
RECORD: N 28-1/2 E, 16 LKS. - 1976 BLM
10" FIR, N 73 W, 14.9 FT. - CLOSED FACE
RECORD: N 73 W, 22.5 LKS. - 1976 BLM

CENTER 1/4 CORNER

SET: 2" X 32" IRON PIPE WITH 2-1/2" BRASS CAP DATED 1994
18" FIR, N 87 E, 7.0 FT. TO "W" NAIL - SCRIBED "C1/4 S33 BT"
25" FIR, S 14 E, 29.0 FT. TO "W" NAIL - SCRIBED "C1/4 S33 BT"
18" FIR, S 83-1/2 W, 12.6 FT. TO "W" NAIL - SCRIBED "C1/4 S33 BT"
18" FIR, N 19 W, 22.0 FT. TO "W" NAIL - SCRIBED "C1/4 S33 BT"
FOUND: METAL FENCE POST BEARS S 73-1/4 E, 3.8 FT. FROM SET CORNER
RECORD: 1977 BLM ADMINISTRATIVE SURVEY CENTER 1/4 MONUMENT
BTS TO METAL FENCE POST
RECORD: 20" FIR, N 83 E, 8.3 FT. - 1977 BLM
RECORD: 9" FIR, S 61 W, 8.2 FT. - 1977 BLM, NOW DEAD

CENTER WEST 1/16

FOUND: METAL FENCE POST BEARS S 18-1/2 E, 0.8 FT. FROM CALCULATED POSITION OF CW 1/16 CORNER
RECORD: 1977 BLM ADMINISTRATIVE SURVEY
BTS TO METAL FENCE POST
11" FIR, S 62 E, 22.5 FT. - CLOSED FACE
20" FIR, S 21 W, 18.4 FT. - BLAZED FACE

1/4 CORNER 33, 34

FOUND: DOUGLAS COUNTY BRASS CAP DATED 1965
12" GRAND FIR, S 41 E, 79.5 FT. - CLOSED FACE
RECORD: S 40-1/2 E, 79.5 FT. - 1965 DOUGLAS COUNTY
21" CEDAR, N 73 W, 127.4 FT. - CLOSED FACE
RECORD: N 72-1/2 W, 126.0 FT. - 1965 DOUGLAS COUNTY
1976 BLM BRASS CAP RM, S 34-3/4 E, 18.6 FT.
RECORD: S 34 E, 28 LKS. - 1976 BLM

BASIS OF BEARING: SOLAR OBSERVATION

LEGEND

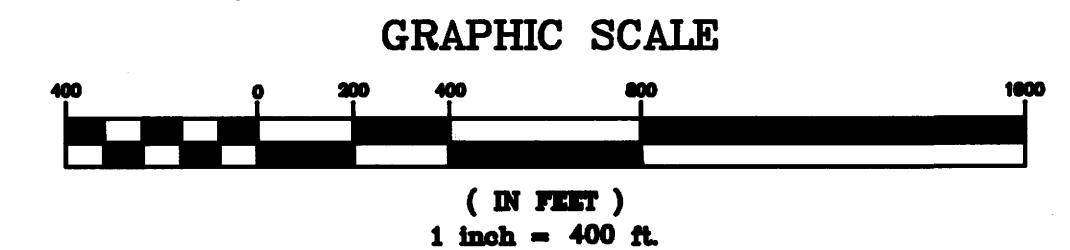
- ⊙ - CORNERS FOUND (AS NOTED)
- - CORNERS SET (AS NOTED)
- - CALCULATED POINT (NOT SET)
- - PROPERTY LINE
- [] - RECORD DATA - 1855 GLO
- () - RECORD DATA - 1976 BLM
- - EXISTING FENCE

SECTION CORNER 32, 33 ONLY

FOUND: DOUGLAS COUNTY BRASS CAP DATED 1963
65" FIR STUMP, S 86 E, 29.7 FT.
RECORD: S 86 E, 45 LKS. - 1855 GLO
50" FIR STUMP, N 70 E, 27.7 FT.
RECORD: N 70 E, 42 LKS. - 1855 GLO
60" FIR STUMP, N 43 W, 25.3 FT.
RECORD: N 43 W, 38 LKS. - 1855 GLO
54" FIR, N 74 W, 64.8 FT. - OPEN FACE NO SCRIBING
RECORD: N 75 W, 65.0 FT. - 1963 DOUGLAS COUNTY
17" CEDAR STUMP, S 73 E, 38.2 FT.
RECORD: S 73 E, 38.0 FT. - 1963 DOUGLAS COUNTY

1/4 CORNER 33 ONLY

FOUND: 3-1/4" U.S.B.L.M. BRASS CAP DATED 1976
24" FIR, N 5 W, 49.5 FT.
RECORD: N 5-1/2 W, 75 LKS. - 1976 BLM
23" MAPLE, S 89 E, 47.0 FT. - CLOSED FACE
RECORD: UNKNOWN



COUNTY SURVEYORS FILE DATA
DO NOT REMOVE FROM OFFICE

REGISTERED PROFESSIONAL LAND SURVEYOR
DANIEL W. BAKER
1978
EXPIRES 12/31/95

SURVEY IN
ALL QTRS. SEC. 33, T23S, R4W, W.M.
DOUGLAS COUNTY, OREGON
CLIENT: WEYERHAEUSER COMPANY
DRAWN BY: DHW
DATE: 9/1/94
FILE: WEYCO1230433
BAKER AND ASSOCIATES, SURVEYORS
1385 OAK STREET - SUITE 3
EUGENE, OREGON (503) 343-7243