

# RECORD OF SURVEY

LOCATED IN  
SECTIONS 3 & 4, T.25S., R.6W., W.M.

SCALE: 1" = 400' JUNE 1994

SURVEYED FOR:  
ROSEBURG FOREST PRODUCTS  
P.O. BOX 1088  
ROSEBURG, OREGON 97470

SURVEYED BY:  
BTS ENGINEERING AND SURVEYING, INC.  
431 S.E. MAIN  
ROSEBURG, OR 97470

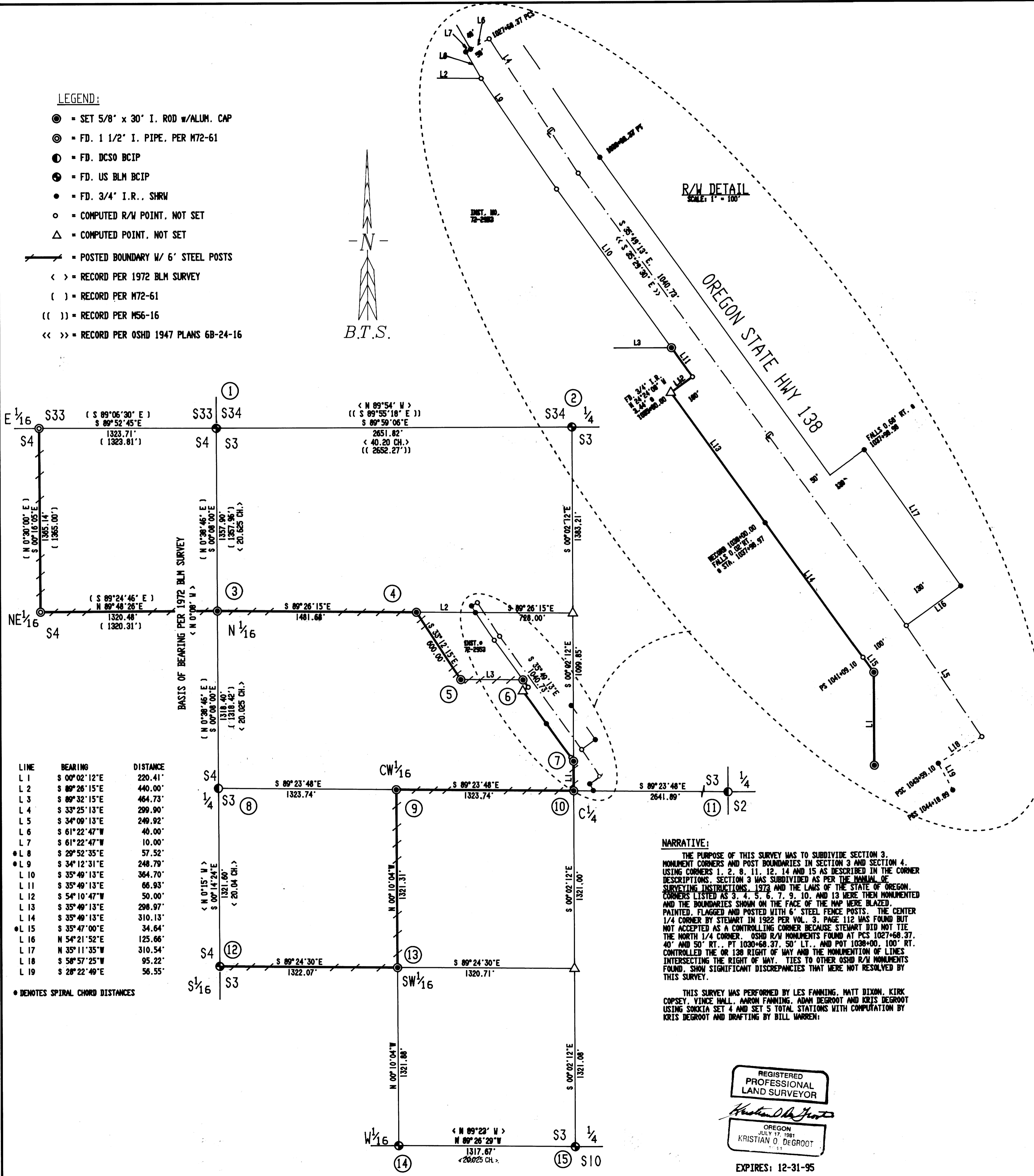
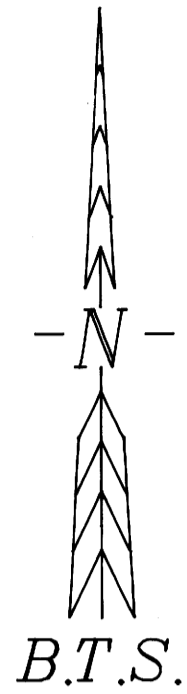
FILED

Date: 8-3-94 By: JP  
This survey consists of  
Map: M119-34  
Narrative:  
Corner Rpt:

DOUGLAS COUNTY SURVEYOR

### LEGEND:

- = SET 5/8" x 30" I. ROD w/ALUM. CAP
- = FD. 1 1/2" I. PIPE, PER M72-61
- ⊙ = FD. DCSO BCIP
- ⊕ = FD. US BLM BCIP
- = FD. 3/4" I.R., SHRN
- = COMPUTED R/W POINT, NOT SET
- △ = COMPUTED POINT, NOT SET
- = POSTED BOUNDARY W/ 6" STEEL POSTS
- < > = RECORD PER 1972 BLM SURVEY
- ( ) = RECORD PER M72-61
- (( )) = RECORD PER M56-16
- << >> = RECORD PER OSHD 1947 PLANS 6B-24-16



R/W DETAIL  
SCALE: 1" = 100'

OREGON STATE HWY 138

BEARING SURVEY ON  
FALL OF 1994  
BY STA. 1004-99-97

### NARRATIVE:

THE PURPOSE OF THIS SURVEY WAS TO SUBDIVIDE SECTION 3, MONUMENT CORNERS AND POST BOUNDARIES IN SECTION 3 AND SECTION 4, USING CORNERS 1, 2, 8, 11, 12, 14 AND 15 AS DESCRIBED IN THE CORNER DESCRIPTIONS. SECTION 3 WAS SUBDIVIDED AS PER THE MANUAL OF SURVEYING INSTRUCTIONS, 1973 AND THE LAWS OF THE STATE OF OREGON. CORNERS LISTED AS 3, 4, 5, 6, 7, 9, 10, AND 13 WERE THEN MONUMENTED AND THE BOUNDARIES SHOWN ON THE FACE OF THE MAP WERE BLAZED, PAINTED, FLAGGED AND POSTED WITH 6" STEEL FENCE POSTS. THE CENTER 1/4 CORNER BY STEWART IN 1922 PER VOL. 3, PAGE 112 WAS FOUND BUT NOT ACCEPTED AS A CONTROLLING CORNER BECAUSE STEWART DID NOT TIE THE NORTH 1/4 CORNER. OSHD R/W MONUMENTS FOUND AT PCS 1027+68.37, 40' AND 30' RT.; PT. 1030+68.37, 50' LT.; AND POT. 1038+00, 100' RT. CONTROLLED THE OR 138 RIGHT OF WAY AND THE MONUMENTATION OF LINES INTERSECTING THE RIGHT OF WAY. TIES TO OTHER OSHD R/W MONUMENTS FOUND, SHOW SIGNIFICANT DISCREPANCIES THAT WERE NOT RESOLVED BY THIS SURVEY.

THIS SURVEY WAS PERFORMED BY LES FANNING, MATT DIXON, KIRK COPSEY, VINCE HALL, ARON FANNING, ADAM DEGROOT AND KRIS DEGROOT USING SMOCKIA SET 4 AND SET 5 TOTAL STATIONS WITH COMPUTATION BY KRIS DEGROOT AND DRAFTING BY BILL WARREN.

REGISTERED PROFESSIONAL LAND SURVEYOR

KRISTIAN O. DEGROOT

EXPIRES: 12-31-95

### CORNER DESCRIPTIONS:

ALL NEW BEARING TREES HAVE DOUBLE BLAZED FACES WITH BEARINGS TAKEN TO THE CENTER OF THE TREE AT THE ROOT CROWN. DISTANCES MEASURED TO A WALL ON THE ROOT CROWN AT THE SIDE AND CENTER OF THE TREE. FACES PAINTED YELLOW, BEARING TAGS ATTACHED AND A BRASS WASHER STAMPED "PLS 1941" NAILED INTO THE LOWER FACE.

- ① S33/S34/S3/S4  
FOUND A 2" IRON PIPE WITH A 3 1/4" USBLM BRASS CAP BY USBLM CADASTRAL SURVEYORS ALRIGHT AND BOWDER IN 1972. FIRMLY SET, PROJECTING 4" ABOVE THE GROUND AND STAMPED:  
T25S  
R6W  
S3  
S4  
S3  
1972  
FROM WHICH BEARING TREES BY STEWART IN 1922:  
A 35" D. FIR BEARS N. 77°W., 9.5 FT. WITH A HEALED BLAZE.  
(REC. N.16°W., REC. 9.2' TO FACE).  
AND BEARING TREES BY GODFREY IN 1962 PER CS 49/123:  
A 23" D. FIR BEARS N. 30°E., 35.4 FT. WITH A HEALED BLAZE.  
(REC. N.20°E.)  
A 11" W. OAK BEARS S. 32°E., 9.5 FT. WITH A HEALED BLAZE.  
A 15" x 12" TWIN OAK BEARS S. 74°W., 63.5 FT. WITH A HEALED BLAZE.
- ② 1/4 S34/S3  
FOUND A 2" IRON PIPE WITH A 3 1/4" USBLM BRASS CAP BY USBLM CADASTRAL SURVEYORS ALRIGHT AND BOWDER IN 1972. FIRMLY SET, PROJECTING 10" ABOVE THE GROUND AND STAMPED:  
T24S  
R6W  
S3  
S4  
1972  
FROM WHICH BEARING TREES BY ALRIGHT & BOWDER IN 1972:  
A 8" MAHOGNE BEARS N. 40°E., 14.3 FT. WITH SCRIBE MARKS PARTIALLY VISIBLE. (REC. N. 37 1/2° E., 21 LKS.)  
A 10" D. OAK BEARS S. 29°E., 112.5 FT. WITH A ROTTED PARTIALLY HEALED FACE. (REC. 151 LKS.)
- ③ N 1/16 S4/S3  
SET A 5/8" X 30" IRON ROD, 28" IN THE GROUND, WITH A 1 1/2" ALUM. CAP STAMPED:  
T25S  
R6W  
N 1/16  
S4  
S3  
1994  
FROM WHICH BEARING TREES:  
A 10" D. FIR BEARS S. 33°E., 17.9 FT., SCRIBED "N 1/16 S3 BT".  
A 12" D. FIR BEARS S. 61°W., 33.1 FT., SCRIBED "N 1/16 S4 BT".
- ④ PROPERTY CORNER  
SET A 5/8" X 30" IRON ROD, 24" IN THE GROUND, WITH A 1 1/2" ALUM. CAP STAMPED: "PROP. COR. PLS 1941".  
FROM WHICH NEW BEARING TREES:  
A 18" D. FIR BEARS S. 83°W., 11.9 FT., SCRIBED "PC BT".  
A 16" D. FIR BEARS N. 14°W., 20.3 FT., SCRIBED "PC BT".
- ⑤ PROPERTY CORNER  
SET A 5/8" X 30" IRON ROD, 24" IN THE GROUND, WITH A 1 1/2" ALUM. CAP STAMPED: "PROP. COR. PLS 1941".  
FROM WHICH NEW BEARING TREES:  
A 12" D. FIR BEARS N. 74°E., 9.8 FT., SCRIBED "PC BT".  
A 8" D. FIR BEARS S. 15°E., 7.9 FT., SCRIBED "PC BT".
- ⑥ PROPERTY CORNER  
SET A 5/8" X 30" IRON ROD, 24" IN THE GROUND IN A 18" DIAMETER MOUND OF STONE WITH A 1 1/2" ALUM. CAP STAMPED "PROP. COR. PLS 1941".  
FROM WHICH NEW BEARING TREES:  
A 16" D. FIR BEARS N. 81°E., 13.7 FT., SCRIBED "PC BT".  
A 12" MAPLE BEARS N. 20°W., 11.8 FT., SCRIBED "PC BT".
- ⑦ PROPERTY CORNER  
SET A 5/8" X 30" IRON ROD, 24" IN THE GROUND IN A 24" DIAMETER MOUND OF STONE WITH A 1 1/2" ALUM. CAP STAMPED: "PROP. COR. PLS 1941".  
FROM WHICH NEW BEARING TREES:  
A 22" D. FIR BEARS N. 77°W., 24.5 FT., SCRIBED "PC BT".  
A 20" ALDER BEARS N. 4°E., 28.6 FT., SCRIBED "PC BT".
- ⑧ 1/4 S4/S3  
FOUND A 1" IRON PIPE WITH A 2 1/2" BRASS CAP BY GODFREY IN 1962 PER CS 49/123. FIRMLY SET, PROJECTING 4" ABOVE THE GROUND AND STAMPED:  
T25S  
R6W  
S4  
S3  
1972  
FROM WHICH BEARING TREES BY GODFREY IN 1962:  
A 19" D. FIR BEARS N. 26°E., 15.4 FT. WITH A HEALED BLAZE.  
A 13" D. FIR BEARS N. 25°W., 15.8 FT. WITH A HEALED BLAZE.
- ⑨ CW 1/16, S3  
SET A 5/8" X 30" IRON ROD, 28" IN THE GROUND, WITH A 1 1/2" ALUM. CAP STAMPED:  
T25S  
R6W  
N 1/16  
S3  
C  
1994  
FROM WHICH BEARING TREES BY GODFREY IN 1962:  
A 19" D. FIR BEARS N. 26°E., 15.4 FT. WITH A HEALED BLAZE.  
A 13" D. FIR BEARS N. 25°W., 15.8 FT. WITH A HEALED BLAZE.
- ⑩ CW 1/16, S3  
SET A 5/8" X 30" IRON ROD, 28" IN THE GROUND, WITH A 1 1/2" ALUM. CAP STAMPED:  
T25S  
R6W  
N 1/16  
S3  
C  
1972  
FROM WHICH BEARING TREES BY ALRIGHT AND BOWDER IN 1972:  
A 15" LONCUT D. FIR STUMP BEARS N. 0°30' E., 21.8 FT. WITH A HEALED BLAZE AND ALSO A 4 FOOT LOG WITH A HEALED BLAZE LAYING ALONGSIDE.  
A 13" D. FIR BEARS SOUTH, 27.5 FT. WITH A HEALED BLAZE. (REC. 42 1/2 LKS.)
- ⑪ SW 1/16, S3  
FOUND A 2" IRON PIPE WITH A 3 1/4" USBLM BRASS CAP BY USBLM CADASTRAL SURVEYORS ALRIGHT AND BOWDER IN 1972. FIRMLY SET, PROJECTING 10" ABOVE THE GROUND AND STAMPED:  
T25S  
R6W  
SW 1/16  
S3  
1972  
FROM WHICH BEARING TREES BY ALRIGHT AND BOWDER IN 1972:  
A 16" D. FIR BEARS N. 87 1/2° E., 54.6 FT. WITH A HEALED BLAZE. (REC. N. 82 1/2° E., 83 LKS.)  
A 11" D. FIR BEARS N. 33°W., 34.9 FT. WITH A HEALED BLAZE. (REC. N. 40°W., 54 LKS.)
- ⑫ SW 1/16, S3  
SET A 5/8" X 30" IRON ROD, 28" IN THE GROUND WITH A 1 1/2" ALUM. CAP STAMPED:  
T25S  
R6W  
SW 1/16  
S3  
1994  
FROM WHICH NEW BEARING TREES:  
A 6" D. FIR BEARS S. 92°W., 34.2 FT., SCRIBED "SW 1/16 S3 BT".  
A 7" D. FIR BEARS S. 15°W., 24.1 FT., SCRIBED "SW 1/16 S3 BT".
- ⑬ SW 1/16, S3/S10  
FOUND A 2" IRON PIPE WITH A 3 1/4" USBLM BRASS CAP BY USBLM CADASTRAL SURVEYORS ALRIGHT AND BOWDER IN 1972. FIRMLY SET, PROJECTING 10" ABOVE THE GROUND AND STAMPED:  
T25S  
R6W  
SW 1/16  
S3  
S10  
1972  
FROM WHICH BEARING TREES BY ALRIGHT AND BOWDER IN 1972:  
A 22" D. FIR BEARS N. 54 1/2° W., 63.5 FT. WITH A HEALED BLAZE.  
A 10" OAK BEARS S. 67 1/2° W., 65.3 FT. WITH A HEALED BLAZE.

COUNTY SURVEYORS FILE DATA  
DO NOT REMOVE FROM OFFICE