

LONE ROCK TIMBER CO.

PO BOX 1127 ROSEBURG, OREGON 97470 JUNIPER 22-07-12 & 13 TRACTS
 SECTIONS 12, 13, AND 14 TOWNSHIP 22 SOUTH, RANGE 7 WEST, W.M. DOUGLAS COUNTY
 BRUSHY-ELK CREEK SURVEY SCALE 1" = 600' DATE: MARCH 1994

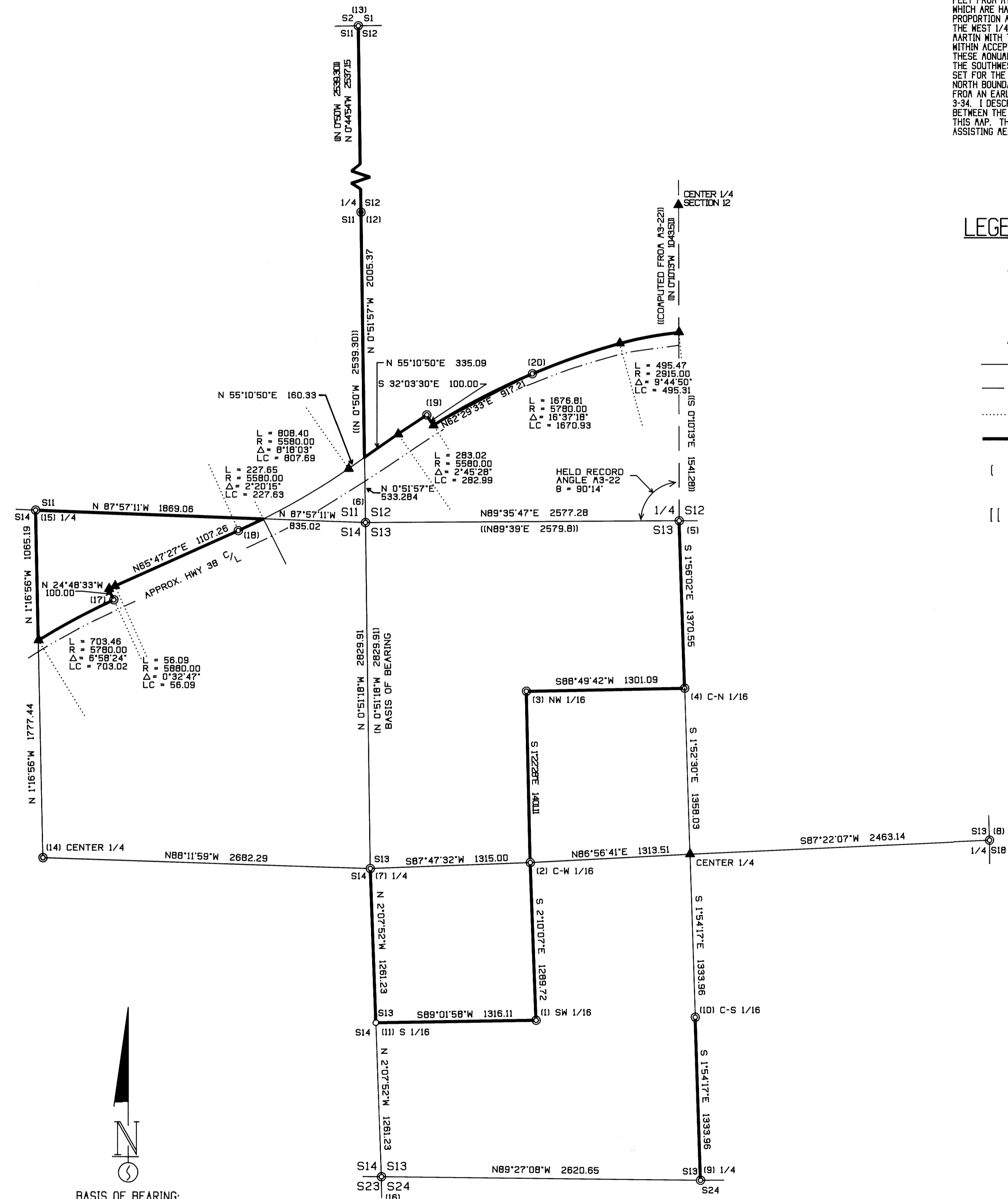
NARRATIVE

THIS SURVEY WAS CONDUCTED TO ESTABLISH CORNER MONUMENTS, WILFORD HAINES AND LEO MARTIN RECORD AND UNRECORDED MONUMENTS, AND OREGON DEPT. OF TRANSPORTATION UNRECORDED RIGHT-OF-WAY MONUMENTS. WE INITIATED THIS SURVEY AT THE WEST 1/4 OF SECTION 13 A COUNTY BCIP FROM ORIGINAL EVIDENCE. WE THEN TRAVERSED ON A RANDOM LINE SOUTHERLY TO THE SOUTHWEST CORNER OF SECTION 13 A HAINES T-BAR SET FROM ORIGINAL EVIDENCE. RETURNING TO AIDPOINT TO SET THE SOUTH 1/16, FROM WHICH A HAINES BT TAG (NO MONUMENT) GIVES POSITION S70°M, 2.4 FEET FROM AY SET CORNER. WE THEN TRAVERSE ON A RANDOM LINE TO TIE THE SOUTH 1/4, AND EAST 1/4 OF SECTION 13 WHICH ARE HAINES T-BARS SET FROM ORIGINAL EVIDENCE. WE THEN TIED IN THE NORTH 1/4, A HAINES T-BAR SET BY PROPORTION AND THE NW/4 OF SECTION 13 A HAINES T-BAR SET FROM ORIGINAL TOPOG CALLS, CLOSING OUR LOOP BACK TO THE WEST 1/4. WE THEN TRAVERSED NEAR LINE TO THE INTERIOR 1/16 CORNERS AS SHOWN ON THIS MAP SET BY HAINES AND/OR MARTIN WITH T-BARS IN AN UNRECORDED SURVEY. I ACCEPT THE MONUMENTS IN THEIR CURRENT PLACEMENT AS THEY ARE WITHIN ACCEPTABLE SURVEY STANDARDS WHEN THEY WERE SET, AND BOTH THE BLM AND PRIVATE ADJACENT OWNERS HAVE USED THESE MONUMENTS FOR ESTABLISHING PROPERTY LINES FOR OVER 35 YEARS. I CONTINUE AN OPEN TRAVERSE NORTHERLY FROM THE SOUTHWEST CORNER OF SECTION 12 TYPING IN HAINES T-IRON SET BY PROPORTION FOR THE WEST 1/4 AND THE COUNTY BCIP SET FOR THE NORTHWEST CORNER OF SECTION 12 FROM ORIGINAL EVIDENCE. WE ALSO TIE IN HIGHWAY R/W MONUMENTS ON THE NORTH BOUNDARY OF HWY 38 IN SECTIONS 12 AND 14. THIS R/W BOUNDARY IS DESCRIBED IN DEED BOOK 98, PAGES 266 & 267 FROM AN EARLY 1900 RAILROAD EASEMENT AND IS MAPPED ON UNRECORDED OREGON DEPT. OF HIGHWAY MAPS #18-20-15 AND 108-3-34. I DESCRIBE THE RIGHT-OF-WAY BOUNDARY AS SHOWN ON THIS MAP FROM COMPASS RULE BALANCED TURNING POINTS BETWEEN THE ACTUAL FOUND MONUMENT LOCATIONS. TRUE PROPERTY BOUNDARY LINES WERE BLAZED AND FLAGGED AS SHOWN ON THIS MAP. THIS SURVEY WAS DONE WITH A LIETZ SET 2 TOTAL STATION WITH GARY ANGOLET, PAT KELLY AND JERRY RAGON ASSISTING ME.

LEGEND:

- ⊙ - FOUND MONUMENT SIZE AND TYPE NOTED.
- - SET 5/8" X 36" IRON ROD W/ 1/4" PLASTIC CAP SET. INSCRIBED LS 2291
- ▲ - CALCULATED CORNER POSITION
- - PROJECTED LINES
- - COMPUTED LINES
- - CURVE RADIUS LINES
- - LINES FLAGGED, BLAZED & TAGGED
- () - KEN HOFFINE RECORD SURVEY FILED IN DOUGLAS COUNTY SURVEYORS OFFICE M 117-4
- [] - WILFORD HAINES RECORD SURVEY FILED IN DOUGLAS COUNTY SURVEYORS OFFICE M 3-22

REGISTERED
 PROFESSIONAL
 LAND SURVEYOR
Ken W. Hoffine
 OREGON
 JULY 8, 1987
 KEN W. HOFFINE
 228
 EXPIRES 6-30-95



BASIS OF BEARING:
 MAP M 117-4

CORNER INFORMATION

THE FOLLOWING IS A RECORD OF ALL CORNERS FOUND OR SET DURING THE COURSE OF THIS SURVEY.

- (1) SOUTHWEST 1/16 CORNER SECTION 13
 FOUND 3 FOOT LONG HAINES T-IRON IN ROOTS OF TIPPED OVER WINDTHROW. T-IRON WAS BADLY BENT SO WE STRAIGHTEN AND PUT BACK IN ITS FOUND POSITION. COULD NOT FIND ANY BEARING TREES.
 -- 16" DOUGLAS FIR BEARS N20°E, 4.0 FEET, WE SCRIBE SW 1/16 S13 BT AND TAG TREE.
 -- 27" DOUGLAS FIR BEARS S86°E, 30.1 FEET, WE SCRIBE SW 1/16 S13 BT AND TAG TREE.
 CORNER LIES ON STEEP NORTH SLOPE APPROXIMATELY 100 FEET SOUTH OF BRUSH CREEK.
- (2) CENTERWEST 1/16 CORNER SECTION 13
 FOUND HAINES T-IRON IN GOOD CONDITION 0.5 FEET ABOVE GROUND.
 -- 25" DOUGLAS FIR BEARS S38°E, 26.9 FEET, WELL HEALED FACE, BLM TAG
 -- 34" DOUGLAS FIR BEARS N55°E, 18.1 FEET, BARK SCRIBED VISIBLE
 CORNER LIES ON 20% WEST FACING SLOPE ONE CHAIN SOUTH OF WEST FLOWING DRAIN ON BENCHY TYPE GROUND.
- (3) NORTHWEST 1/16 CORNER SECTION 13
 FOUND HAINES T-IRON IN GOOD CONDITION.
 -- 36" APPLE WITH A 17" SCHOOLMARM LAMB BEARS N40°E, 4.0 FEET, WELL HEALED FACE WITH BLM TAG
 -- 12" DOUGLAS FIR BEARS S75°E, 11.3 FEET, WELL HEALED FACE TAG
 CORNER LIES JUST OFF OF BENCHY GROUND AND 6.0 FEET WEST OF SAALL DRAIN. ALSO APPROXIMATELY 100 FEET SOUTH OF GRAVEL ROAD AND 80.0 FEET NORTH OF POWERLINE.
- (4) CENTERNORTH 1/16 CORNER SECTION 13
 FOUND HAINES T-IRON IN GOOD CONDITION.
 -- 25" DOUGLAS FIR BEARS S10°E, 62.0 FEET, BARKSCRIBED AND BLM TAG
 -- 25" DOUGLAS FIR HIGH STUMP BEARS N2°W, 76.9 FEET, BARK SCRIBED AND HAINES'S WASHER, 1 TAG STUMP
 -- 11" WHITE FIRE BEARS S89°E, 6.8 FEET, WITH LRT LOCATION TAG. CORNER LIES APPROXIMATELY 250 FEET SOUTH OF POWERLINE AT
 BREAK OF BENCH WITH STEEP SLOPE TO SOUTH. A BLM CLEARCUT BEARS SOUTH APPROXIMATELY 150 FEET.
- (5) NORTH 1/4 CORNER SECTION 13
 FOUND HAINES T-IRON IN GOOD CONDITION, 0.5 FEET ABOVE GROUND.
 -- 14" DOUGLAS FIR BEARS N26°E, 7.05 FEET, WELL HEALED FACE, HAINES'S WASHER AND BLM TAG
 -- 25" DOUGLAS FIR HIGH STUMP BEARS S22°W, 6.55 FEET, WELL HEALED SCAR AND B.T. TAG
 CORNER SITS ON ROCEST ROLLING NORTHWEST SLOPE APPROXIMATELY 300 FEET SOUTH OF END OF GRAVEL ROAD. CLEARCUT TO WEST, 16' TO 24' TABER TO EAST.
- (6) NORTHWEST SECTION CORNER SECTION 13
 FOUND HAINES T-IRON 1.0 FEET ABOVE GROUND SET FROM ORIGINAL TOPOG CALLS AS SHOWN ON MAP #A3-22.
 -- 28" ALDER BEARS S70°M, 11.0 FEET WITH BLM TAG
 -- 28" WHITE FIR STUMP BEARS N40°E, 22.2 FEET, HEALED FACE WITH HAINES NAIL AND TAG
 -- 11" DOUGLAS FIR STUMP BEARS S25°E, 23.8 FEET WELL HEALED SCAR
 -- 22" DOUGLAS FIR STUMP BEARS S31°W, 30.3 FEET WELL HEALED SCAR
 CORNER LIES APPROXIMATELY 120 FEET NORTH OF DIRT ROAD. ELK CREEK BEARS NORTH APPROXIMATELY 115 FEET AND THE PROPERTY SOUTH OF THIS CORNER HAS BEEN CLEARCUT.
- (7) WEST 1/4 CORNER SECTION 13
 FOUND COUNTY BRASS CAP 0.6 FEET ABOVE GROUND WITH A HAINES T-IRON NORTH 0.25 FEET AT GROUND LEVEL.
 -- 24" CEDAR BEARS N78°E, 29.8 FEET, WELL HEALED SCAR AND BLM TAG
 -- 44" DOUGLAS FIR STUMP BEARS N10°E, 4.5 FEET, WELL HEALED SCAR SAN CUT THRU FACE AND BLM TAG
 -- 38" DOUGLAS FIR BEARS N43°W, 125.0 FEET, WELL HEALED SCAR AND HAINES'S TAG
 -- CEDAR REMAINS BEARS N1°E, 17.0 FEET, NO MARKS
 -- 60" DOUGLAS FIR LAYED STUMP BEARS N3°E, 84.0 FEET, NO MARKS
 -- 11" DOUGLAS FIR BEARS N49°E, 12.0 FEET, LRT LOCATION TAG
 CORNER LIES ON A FLAT BENCH BETWEEN BRUSH CREEK 2.5 CHAINS TO THE WEST AND BRUSH CREEK ROAD 5.5 CHAINS EAST.
- (8) EAST 1/4 SECTION 13
 FOUND HAINES T-IRON 1.0 FEET ABOVE GROUND.
 -- 24" DOUGLAS FIR BEARS N85°E, 24.5 FEET, NO FACE 3 BT TAGS
 -- 52" DOUGLAS FIR BEARS S10°W, 25.0 FEET, NO FACE LRT LOCATION TAG
 -- ORIGINAL 12" DOUGLAS FIR IS A 55" ROTTEN STUMP BEARS N85°W, 17.8 FEET, OLD FACE VISIBLE, NO SCRIBES
 -- ORIGINAL 12" APPLE IS 10" MINOR ALL BEARS S55°E, 6.8 FEET, NO VISIBLE SCRIBING
 CORNER SITS ON SOX SOUTHWEST SLOPE BLM CLEARCUT TO NORTHWEST.
- (9) SOUTH 1/4 SECTION 13
 FOUND HAINES T-IRON IN GOOD CONDITION.
 -- 31" DOUGLAS FIR HIGH STUMP BEARS N21°E, 68.5 FEET, WELL HEALED SCAR
 -- ORIGINAL 30" WESTERN RED CEDAR IS A BADLY DECAYED 36" BLOWDOWN BEARS N86°W, 12.0 FEET TO STUMP HOLE
 -- 11" DOUGLAS FIR BEARS N24°E, 9.15 FEET, THIS TREE IS ALSO A HAINES BT WITH AN HEALED SCAR WE DO NOT RECRIBE, BUT TAG TREE
 CORNER LIES ON FLAT BENCH IN CLEARCUT. MAIN BRUSH CREEK ROAD BEARS EAST 1.2 CHAINS.
- (10) CENTERSOUTH 1/16 SECTION 13
 SET A 5/8" X 40" IRON ROD WITH 2 1/2" ALUMINIA CAP MARKED LONE ROCK TABER CS 1/16 S13 1994 PLS 2291.
 -- HAINES BRASS WASHER NO RECORD ON DISTURBED DOWN CEDAR LOG BEARS S19°W, 5.1 FEET
 -- 27" DOUGLAS FIR BEARS S 72°20'W, 47.7 FEET, THIS TREE IS ALSO A HAINES BT WITH A HEALED FACE SCRIBED BY HAINES, WE DO NOT RECRIBE, BUT TAG TREE
 -- 28" DEAD CHINKAPIN BEARS S67°34'E, 89.7 FEET, THIS TREE IS ALSO A HAINES BT WITH AN OLD HEALED SCAR WE DO NOT RECRIBE, BUT TAG TREE
 -- 20" DOUG FIR BEARS S 4°08'E, 12.6 FEET, WE SCRIBE CS 1/16 S13 BT AND TAG TREE.
 CORNER LIES ON ADDEST SOUTH FACING SLOPE IN YOUNG TABER. BLAT? HAS CUT A CHUNK OUT OF LOG UNDER HAINES'S WASHER, BUT DID NOT FIND ANYTHING.
- (11) SOUTH 1/16 CORNER BETWEEN SECTION 13 AND SECTION 14
 SET A 5/8" X 40" IRON ROD WITH 2 1/2" ALUMINIA CAP MARKED LONE ROCK TABER S 1/16 S13, S14 1993 PLS 2291.
 -- 22" DOUGLAS FIR BEARS S19°E, 38.85 FEET WE SCRIBED S 1/16 S13 BT AND TAG TREE
 -- 8" DOUGLAS FIR BEARS N24°W, 9.15 FEET. THIS TREE HAD OLD FACE AND HAINES BT TAG WHICH SAYS HAINES CORNER SHOULD BE 44°N, 9.3 FEET. WE LOOK FOR THIS CORNER BUT COULD NOT FIND.
 CORNER SITS ON STEEP EAST FACING SLOPE APPROXIMATELY 45.0 FEET WEST OF DRAIN.
- (12) WEST 1/4 SECTION 12
 FOUND HAINES T-IRON IN GOOD CONDITION.
 -- 30" DOUGLAS FIR STUMP BEARS N52°E, 47.7 FEET, BARK SCRIBED AND BLM TAG
 -- 4"X4"X5" ROCK WITH CHOPPED "X" ON FACE BEARS S87°W, 15.5 FEET, I PAINT
 -- 6"X6"X6" ROCK WITH CHOPPED "X" ON FACE BEARS N52°E, 5.1 FEET, I PAINT
 -- 7" DOUGLAS FIR BEARS S24°E, 6.5 FEET, I TAG TREE
 CORNER LIES ON EXTREME STEEP WEST SLOPE.
- (13) NORTHWEST SECTION CORNER SECTION 12
 FOUND COUNTY BRASS CAP WITH 2" IRON PIPE LOOSELY LEANING OVER COUNTY CAP.
 -- HAINES T-IRON BEARS N73°W, 3.7 FEET
 -- 48" WHITE FIR SNAG BEARS S30°W, 9.7 FEET, GAMED OUT ROTTEN SCAR NO MARKS BLM TAG
 -- 34" WHITE FIR BEARS N75°E, 34.0 FEET, WELL HEALED SCAR AND BLM TAG
 -- 40" INCENSE CEDAR BEARS N57°E, 24.8 FEET WELL HEALED SCAR AND BLM TAG
 -- 27" WHITE FIR BEARS N63°W, 42.5 FEET, WELL HEALED SCAR AND BLM TAG
 -- 7" DOUGLAS FIR BEARS S10°W, 27.3 FEET, WELL HEALED SCAR AND BLM TAG
 CORNER SITS ON GENTLE SOUTHWEST SLOPING BENCHY RIDGE TOP, CLEARCUT TO SOUTHEAST.
- (14) CENTER 1/4 CORNER SECTION 14
 FOUND 2 1/2" ALUMINIA CAP
 -- 4" DOUGLAS FIR BEARS S20°E, 4.81 FEET, FACE AND B.T. TAG
 -- 4" DOUGLAS FIR BEARS S34 1/2°W, 31.80 FEET, FACE AND B.T. TAG
 -- 44" OAK BEARS N58 1/2°W, 33.18 FEET, FACE AND B.T. TAG
 -- 4" DOUGLAS FIR BEARS N47°E, 34.00 FEET, FACE AND B.T. TAG
 HAINES T-IRON BEARS N102°W, 14.84 FEET
 CORNER LIES ON GENTLE SLOPE WITH 3' TO 4' REPROD TO SOUTH AND NORTHEAST, GRASS FIELD TO NORTHWEST.
- (15) NORTH 1/4 CORNER SECTION 14
 FOUND BLM BRASS CAP 0.3 FEET ABOVE GROUND WITH HAINES T-IRON ALONG SIDE.
 -- 30" DOUGLAS FIR BEARS S42°W, 16.5 FEET (TAG SAYS 16.9 FEET) VERY WELL HEALED SCAR WITH HAINES AND BLM TAGS
 -- 29" DOUGLAS FIR BEARS N7°W, 28.1 FEET VERY WELL HEALED SCAR WITH HAINES AND BLM TAGS
 -- 25" DOUGLAS FIR BEARS N10°E, 42.8 FEET (RECORD 42.24 FEET)
 -- 18" DOUGLAS FIR BEARS S24°E, 6.5 FEET (RECORD 4.81 FEET)
 CORNER LIES ON TOP OF FLAT RIDGE IN NICE STAND OF YOUNG TABER, VERY LITTLE UNDERBRUSH.
- (16) SOUTHWEST CORNER SECTION 13
 FOUND HAINES T-IRON SET FROM ORIGINAL EVIDENCE.
 -- 65" DOUGLAS FIR BEARS N40°E, 9.25 FEET WITH POSSIBLE ORIGINAL BARK SCRIBE MARK "B" AND
 -- 14" T1 WITH NEWER SCRIBING BY LEO MARTIN IN BARK HAINES B.T. TAG AND ALSO TAG
 -- 23" DOUGLAS FIR BEARS S18°E, 12.6 FEET (TAG SAYS S15°E, 12.5 FEET) WELL HEALED SCAR WITH B.T. TAG
 -- 15" DOUGLAS FIR BEARS N80°W, 24.1 FEET (TAG SAYS N78°W, 18.0 FEET) WELL HEALED SCAR AND BLM TAG
 -- 21" DOUGLAS FIR BEARS S73°W, 10.0 FEET (TAG SAYS S75°W, 18.0 FEET) WELL HEALED SCAR AND BLM TAG
 CORNER SITS ON STEEP SOUTHEAST SLOPE AT BASE OF A 4.0 FEET TALL ROCK HEADWALL, APPROXIMATELY 8 CHAINS EAST OF MAIN RIDGE.
- (17) HIGHWAY 38 RIGHT OF WAY MARKER
 FOUND HEX IRON ROD AT GROUND LEVEL.
 -- 27" DOUGLAS FIR BEARS N88°W, 11.7 FEET TO ALUMINIA NAIL AND BASE, WE TAG TREE
 FOUND OLD WHITE PAINTED 4" X 4" RIGHT OF WAY POST ROTTED OFF AND ALONG SIDE HEX IRON.
- (18) HIGHWAY 38 RIGHT OF WAY MARKER
 FOUND 5/8" IRON ROD AT GROUND LEVEL.
 -- 27" CEDAR BEARS S42°E, 26.35 FEET TO ALUMINIA NAIL AND BASE, WE TAG TREE
 CORNER LIES NORTH OF THE HIGHWAY NEAR THE BRUSH CREEK BRIDGE.
- (19) HIGHWAY 38 RIGHT OF WAY MARKER
 FOUND HEX IRON ROD 0.0 FEET ABOVE GROUND.
 -- 14" DOUGLAS FIR BEARS S18°E, 2.42 FEET, WE TAG
 FOUND OLD WHITE PAINTED 4" X 4" RIGHT OF WAY POST ROTTED OFF AND ALONG SIDE HEX IRON.
- (20) HIGHWAY 38 RIGHT OF WAY MARKER
 FOUND 1/2" SQUARE IRON ROD.
 -- WHITE PAINTED 4" X 4" RIGHT OF WAY POST BEARS EAST 1.0 FEET
 CORNER SITS ON TOP OF LARGE ROCK CUT ON HIGHWAY 38.

COUNTY SURVEYORS FILE DATA
 DO NOT REMOVE FROM OFFICE