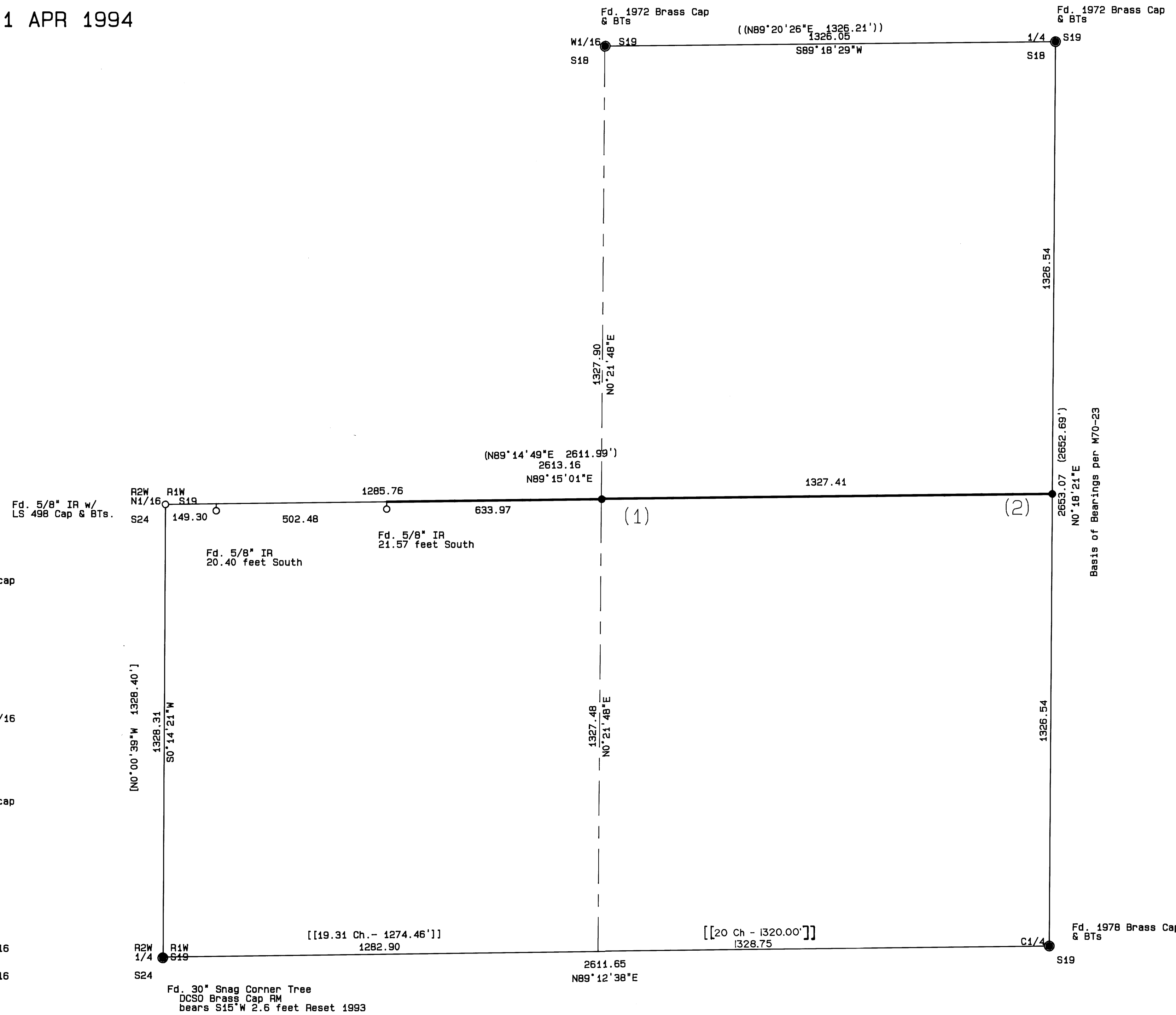


BOUNDARY SURVEY
IN THE NW 1/4, SECTION 19,
TOWNSHIP 31 SOUTH, RANGE 1 WEST, WILLAMETTE MERIDIAN
FOR ROSEBURG FOREST PRODUCTS
1 APR 1994

LEGEND

- Found Brass Cap as noted.
- Found 5/8" iron rod w/ alum. cap marked LS 498.
- Set 5/8" x 30" iron rod w/ aluminum cap marked as shown.
- Lines posted with steel fence posts
- () Record Information per M70-23.
- (()) Record Information per M42-80.
- [] Record Information per M70-20.
- [[]] Calculated Information per 1857 GLO Plat.



(1) NORTHWEST 1/16, SECTION 19

Set a 5/8 inch by 30 inch iron rod with a 3 1/4 inch aluminum cap marked:

T31S R1W
NW1/16 S19

RLS 1654
1994

from which a:

- 10 inch Douglas fir bears S45 E 32.9 feet scribed "NW 1/16 S19 BT".
- 14 inch Cedar bears N70 E 22.0 feet scribed "NW 1/16 S19 BT".

(2) CENTER - NORTH 1/16, SECTION 19

Set a 5/8 inch by 30 inch iron rod with a 3 1/4 inch aluminum cap marked:

T31S R1W
C
N1/16 S19

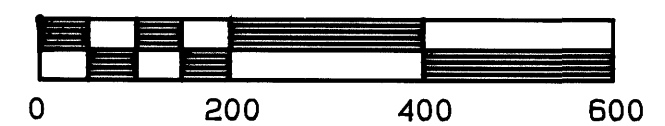
RLS 1654
1994

from which a:

- 20 inch Douglas fir bears N52 E 19.6 feet scribed "CN1/16 S19 BT".
- 24 inch Douglas fir bears S21°W 25.0 feet scribed "CN1/16 S19 BT".

REGISTERED
PROFESSIONAL
LAND SURVEYOR

Ronald A. Quimby
OREGON
JULY 14, 1978
RONALD A. QUIMBY
1954
EXP. 12/31/94



1 inch : 200 feet

PAGE 1 OF 1

COUNTY SURVEYORS FILE DATA
DO NOT REMOVE FROM OFFICE